

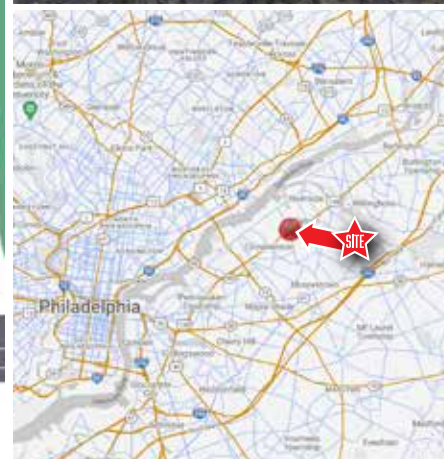
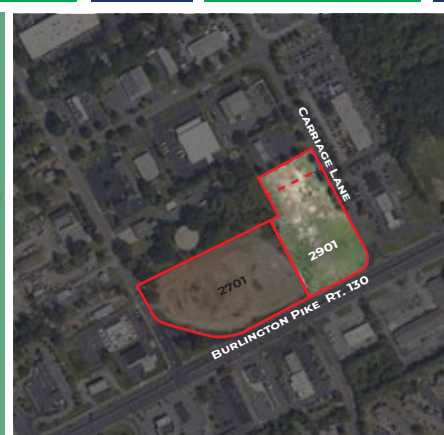
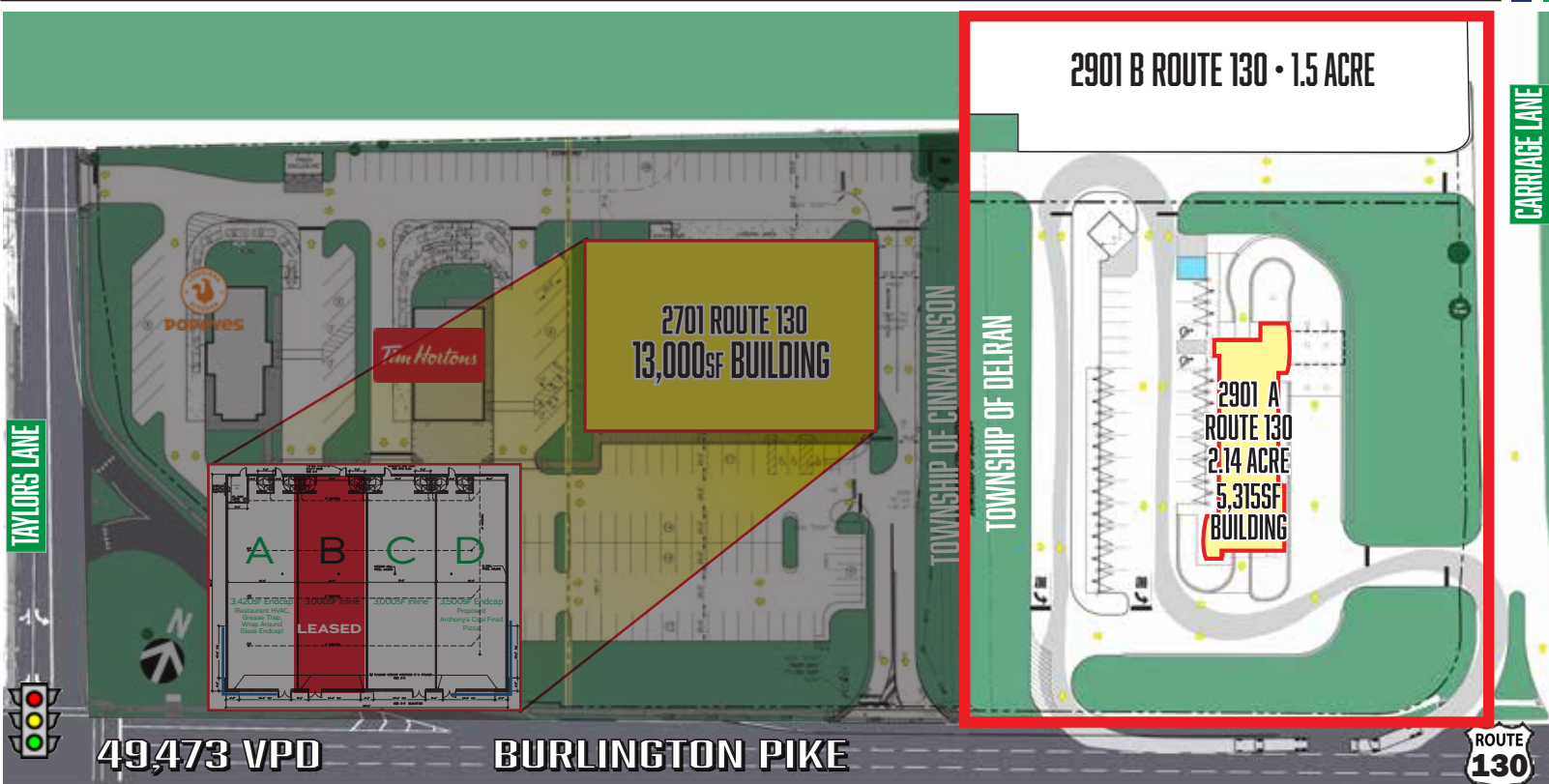
# FULLY APPROVED CAR WASH PAD & 1.5 ACR LAND | FOR LEASE

2901 Route 130 | Delran NJ 08077 | Burlington County

**LEGEND**

PROPERTIES INC.

COMMERCIAL REAL ESTATE



**FOR LEASE | 2901 Route 130 | Delran NJ 08077**

2.14 ACRE  
1.5 ACRE  
Ground Floor

3.64 ACRE  
Parcel Size

IMMEDIATE  
Availability

RENT  
Upon Request

## PROPERTY INFORMATION

- Fully approved 2.14 acre express car wash pad site available for ground lease
- Vacant 1.5 acres of land available for ground lease  
Ideal for daycare, flex, self storage, retail, medical or dental uses
- Excellent visibility and access. Cross easement to signalized traffic light with very strong traffic counts on Route 130
- Strong daytime demographics and retail shopping centers nearby
- Zoned M-2 General Industrial and Commercial

Demographics	1 Mile	3 Miles	5 Miles
Population	10,151	65,097	261,095
Average HH Income	\$120,203	\$153,103	\$126,713
Total Businesses	458	2,080	9,169
Number of Employees	5,623	27,400	107,550
Traffic Counts	Intersection of Route 130 & Taylors Lane: 49,473 VPD		

\*Data Source: Sites USA REGIS™ 2024

FOR MORE INFORMATION: STEVEN DEPETRIS  
PLEASE CONTACT: 856-231-1010 x203  
609-760-2543 CELL  
SDEPETRIS@LPRE.COM



LEGEND PROPERTIES | 1000 Fayette Street | Conshohocken, PA 19428 | 610-941-4034 | LPRE.COM

Information contained herein has been obtained from owner of the property or from sources deemed reliable. We have no reason to doubt it's accuracy but make no warranty or representation. All information is submitted subject to errors, omissions, changes, withdrawal without notice and any special listing conditions of the owner. 101624

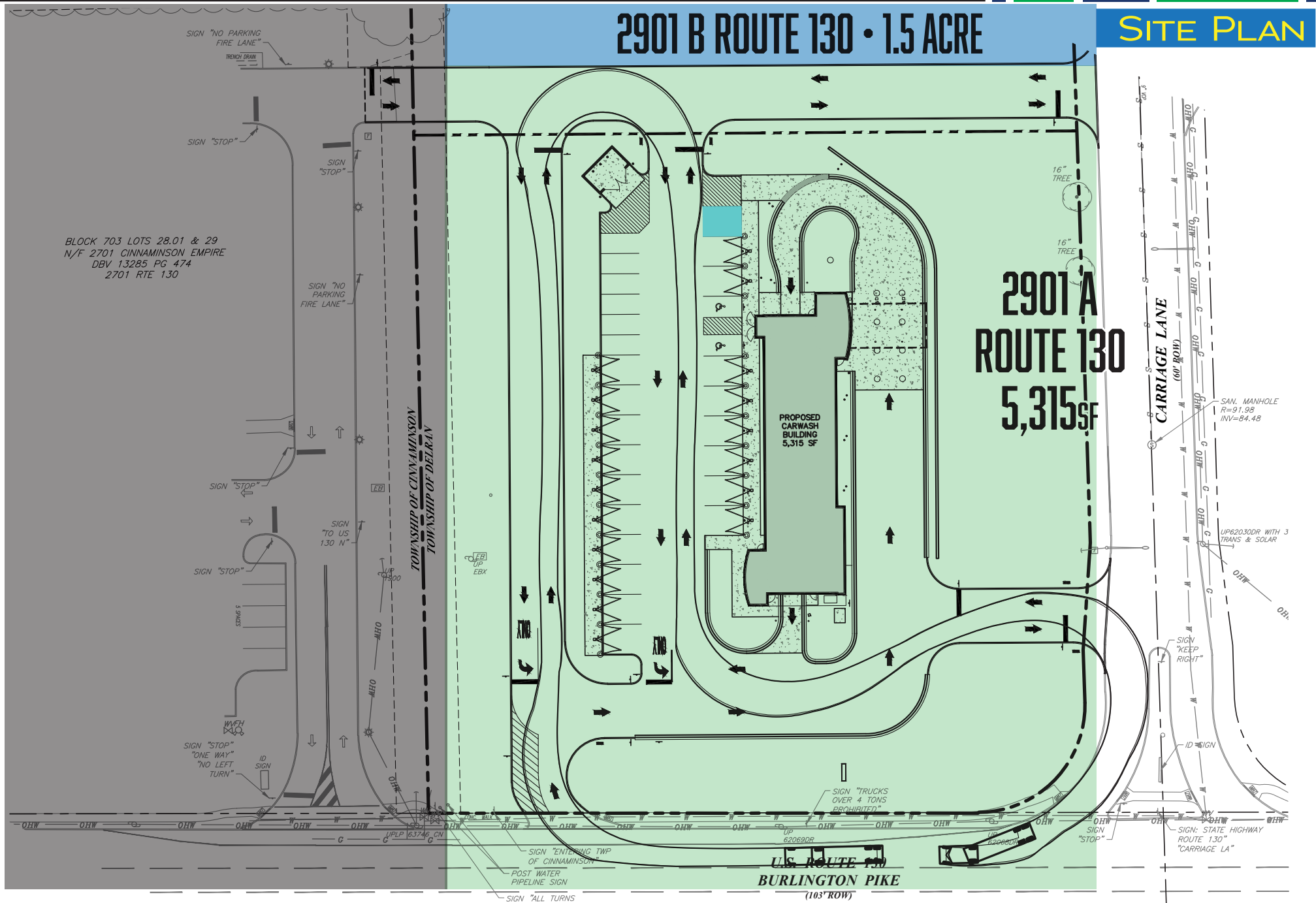
# FULLY APPROVED CAR WASH PAD & 1.5 ACR LAND | FOR LEASE

2901 Route 130 | Delran NJ 08077 | Burlington County

**LEGEND**

PROPERTIES INC.

COMMERCIAL REAL ESTATE



# FULLY APPROVED CAR WASH PAD & 1.5 ACR LAND | FOR LEASE

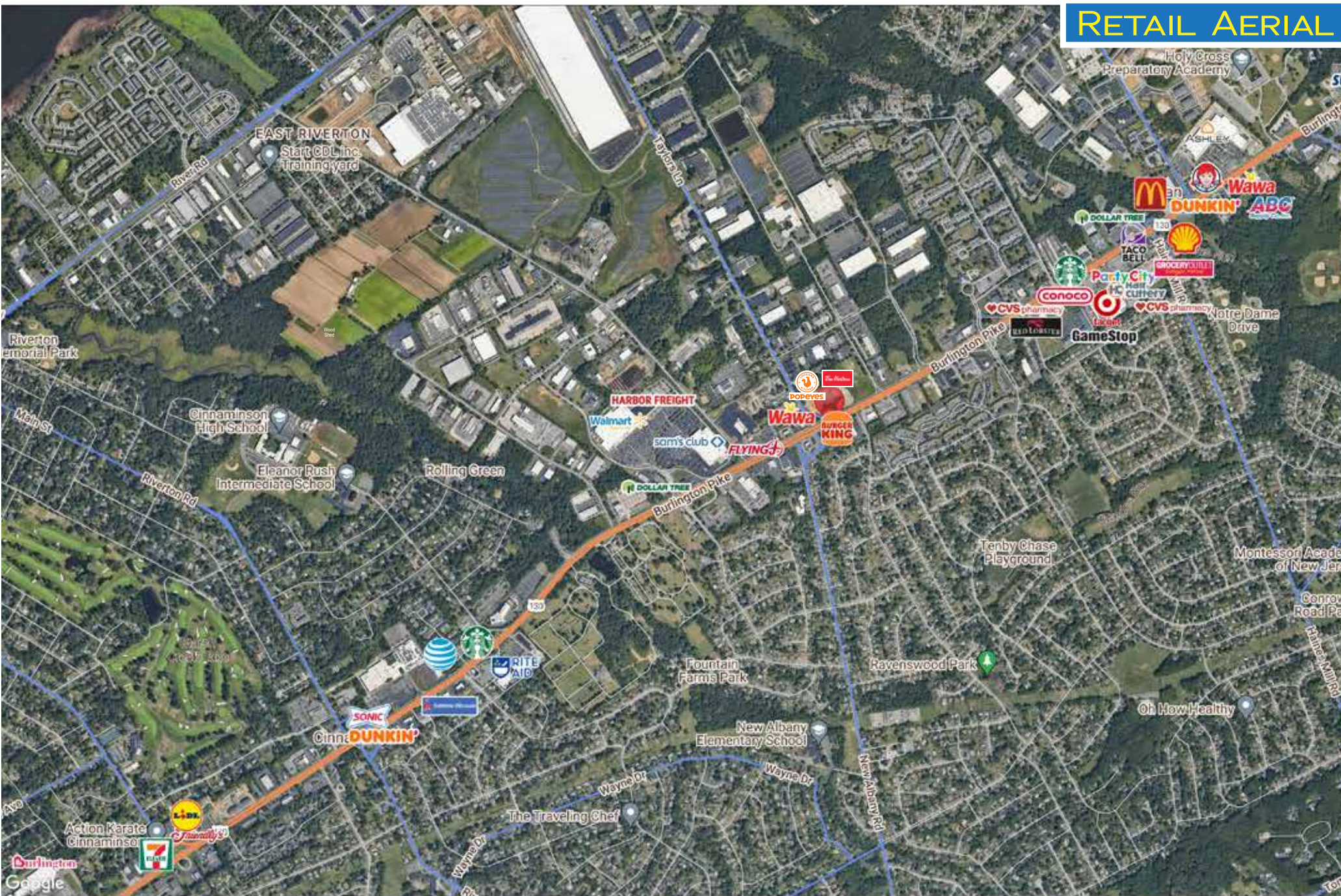
2901 Route 130 | Delran NJ 08077 | Burlington County

**LEGEND**

PROPERTIES INC.

COMMERCIAL REAL ESTATE

## RETAIL AERIAL



LEGEND PROPERTIES | 1000 Fayette Street | Conshohocken, PA 19428 | 610-941-4034 | LPRE.COM

Information contained herein has been obtained from owner of the property or from sources deemed reliable. We have no reason to doubt its accuracy but make no warranty or representation. All information is submitted subject to errors, omissions, changes, withdrawal without notice and any special listing conditions of the owner.

# FULLY APPROVED CAR WASH PAD & 1.5 ACR LAND | FOR LEASE

2901 Route 130 | Delran NJ 08077 | Burlington County

**LEGEND**

PROPERTIES INC.

COMMERCIAL REAL ESTATE

## DEMOGRAPHICS

Population	1 Mile	3 Miles	5 Miles
Population (Est. 2023)	10,151	65,097	261,095
Projected Population (2028)	11,146	65,124	247,013
Projected Annual Growth (2023 to 2028)	2.0%	0%	-1.1%

### Daytime Population

Total Businesses (2023)	458	2,080	9,169
Number of Employees (2023)	5,623	27,400	107,550

### Income

Average HH Income (Est. 2023)	\$120,203	\$153,103	\$126,713
Median HH Income (2023)	\$98,385	\$116,503	\$90,369

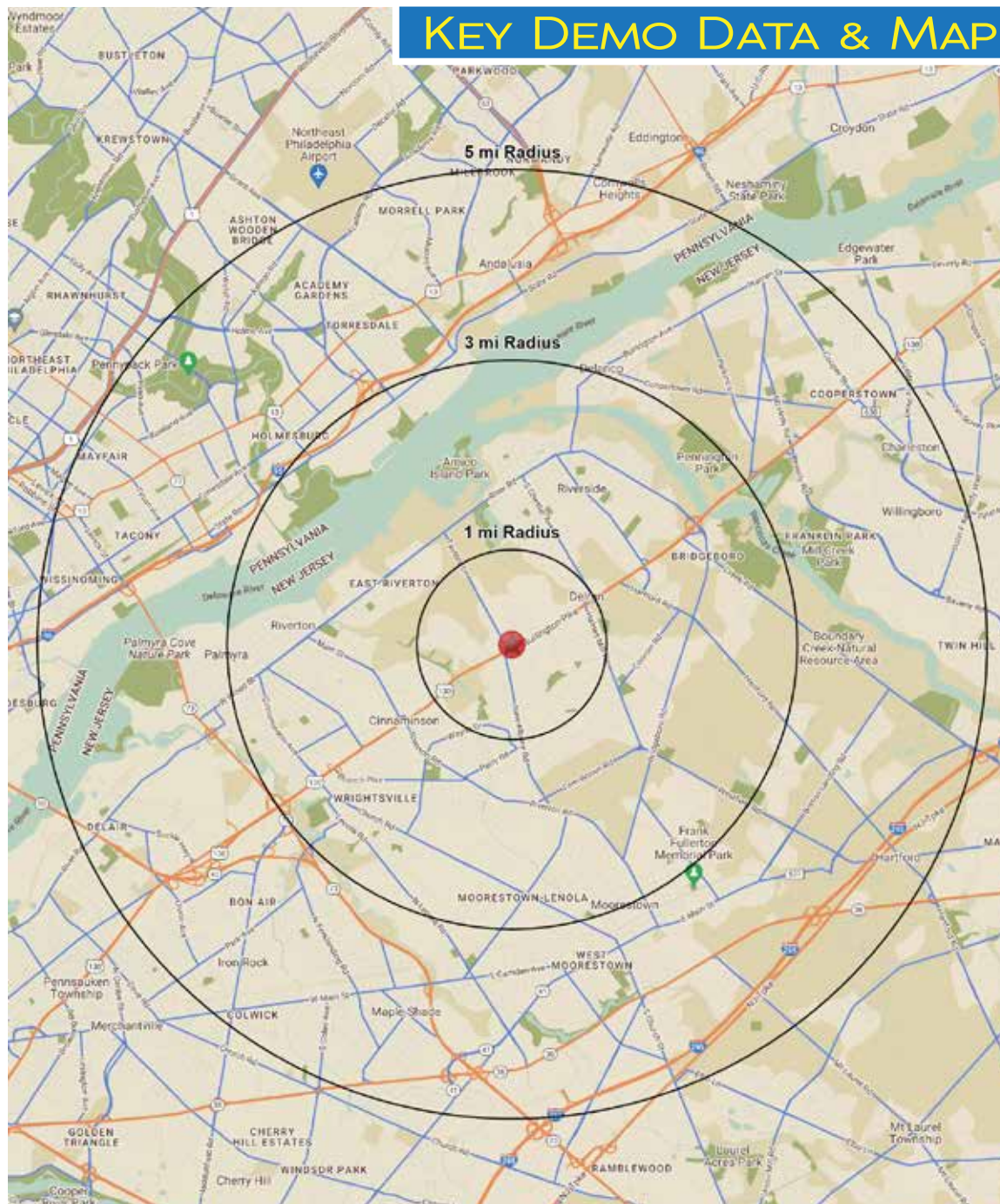
### Households & Growth

Households	4,162	24,184	101,582
Projected HH (2028)	4,710	24,213	97,133
HH Growth with Children (2023 to 2028)	38.4%	28.7%	29.1%

### Education

High School Graduate	25.4%	26.9%	32.7%
Some College	13.2%	15.4%	16.9%
Bachelor Degree	32.5%	27.3%	20.5%
Graduate	14.4%	16.0%	12.7%

## KEY DEMO DATA & MAP



Traffic Counts: Intersection of Route 130 & Taylors Lane: 49,473 VPD

Data Source: Sites USA REGIS™ 2024

LEGEND PROPERTIES | 1000 Fayette Street | Conshohocken, PA 19428 | 610-941-4034 | LPRE.COM

Information contained herein has been obtained from owner of the property or from sources deemed reliable. We have no reason to doubt its accuracy but make no warranty or representation. All information is submitted subject to errors, omissions, changes, withdrawal without notice and any special listing conditions of the owner.