

For Lease

24,257 SF Industrial Building

700 Hilltop Dr

Itasca, Illinois 60143

PROPERTY HIGHLIGHTS

700 Hilltop Dr is an 24,257 SF building that features 1 drive-in door, 2 interior docks and 18' clear height. This hard-to-find sized building in the market has 53 surface parking spaces, and close proximity to I-290, and I-355.



24,257 SF
BUILDING



18'
CLEAR HEIGHT



+/- 4,800 SF
OFFICE



2
INTERIOR DOCKS
1 DRIVE-IN DOOR



53
SURFACE PARKING
SPACES



1600
AMPS

Contact

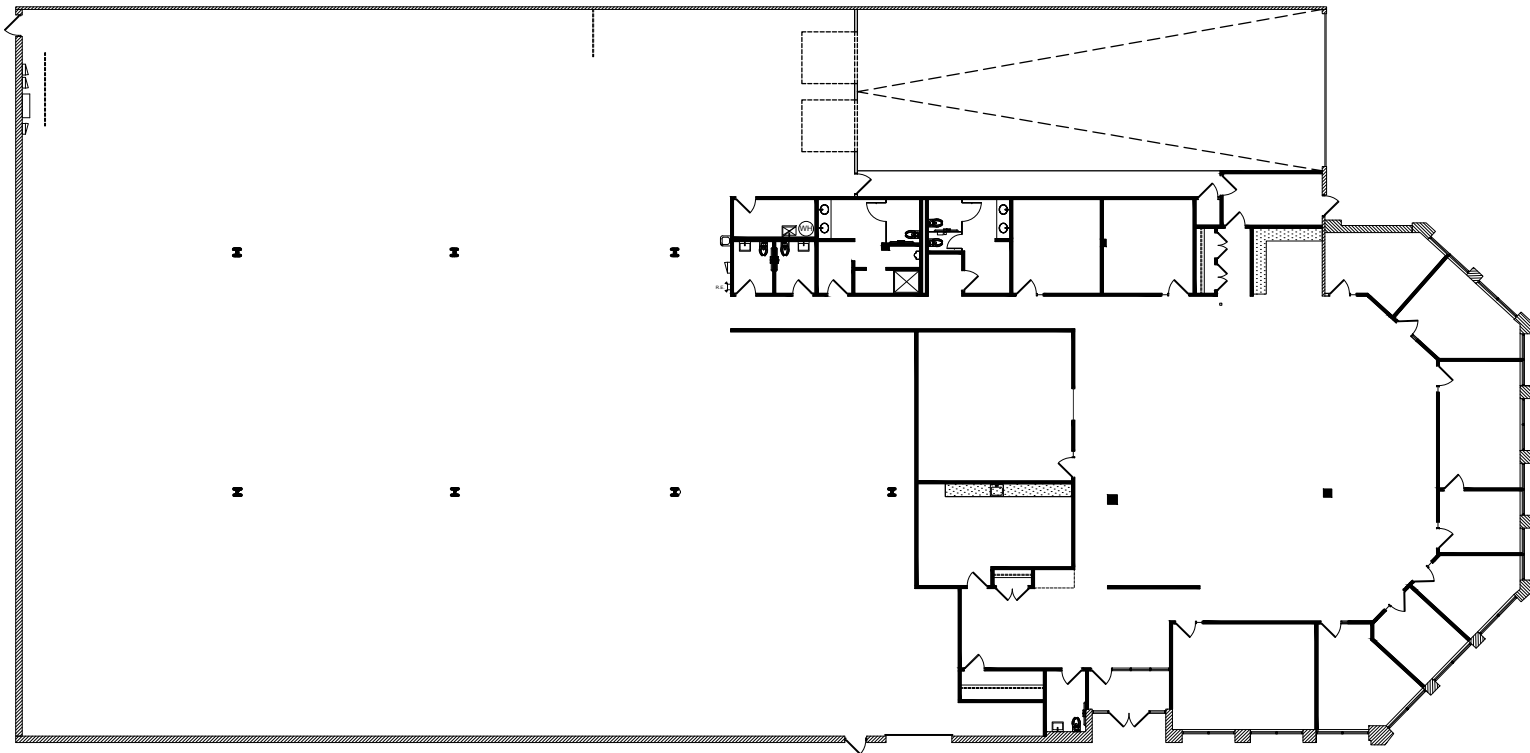
Joe Bronson
+1 630 317 0725
jbronson@hiffman.com

Paddy Dwyer
+1 630 317 0794
pdwyer@hiffman.com

One Oakbrook Terrace
Suite 400
Oakbrook Terrace, Illinois 60181
+1 630 932 1234

NO WARRANTY OR REPRESENTATION, EXPRESS OR IMPLIED, IS MADE AS TO THE ACCURACY OF THE INFORMATION CONTAINED HEREIN, AND THE SAME IS SUBMITTED SUBJECT TO ERRORS, OMISSIONS, CHANGE OF PRICE, RENTAL OR OTHER CONDITIONS, PRIOR SALE, LEASE OR FINANCING, OR WITHDRAWAL WITHOUT NOTICE, AND OF ANY SPECIAL LISTING CONDITIONS IMPOSED BY OUR PRINCIPALS NO WARRANTIES OR REPRESENTATIONS ARE MADE AS TO THE CONDITION OF THE PROPERTY OR ANY HAZARDS CONTAINED THEREIN ARE ANY TO BE IMPLIED.

SITE PLAN OF PROPERTY



Existing Conditions

700 Hilltop Drive, Itasca, IL
11.10.2025

SCALE: N.T.S.

INTERIOR PROPERTY PHOTOS





CALL TO SCHEDULE A TOUR

Joe Bronson

630 317 0725

jbronson@hiffman.com

Paddy Dwyer

630 317 0794

pdwyer@hiffman.com