

2ND GENERATION
FOOD SPACE

West
Hollywood

NEAL
GOLUB

Lic. 01023733
+1 310 550 2667
neal.golub@cbre.com

RYAN
GURMAN

Lic. 01972081
+1 310 650 7545
ryan.gurman@cbre.com

CBRE

PROMINENT CORNER SHOPPING CENTER

THE CORNER OF FAIRFAX AND SANTA MONICA BLVD



FOR LEASE

7901-7913 SANTA MONICA BLVD
WEST HOLLYWOOD, CA 90046



COFFEE SPACE

LEASED



SPACE HIGHLIGHTS

- Great frontage
- Very active and thriving retail corner
- Amazing on-site parking (free with validation)
- Excellent patio



SPACE DETAILS (Subway)

SEEKING PROMINENT RETAIL/FOOD USERS

On one of the most trafficked corners of West Hollywood, at the hard corner of Santa Monica Blvd and Fairfax. Join an opportunity to be directly across the street from Whole Foods Market, below the world-famous Ganga Tattoo, blocks from acclaimed shopping such as SUPREME, and footsteps from LA hot spots such as h.wood's Delilah, Employee's only, and Urban Desert Lab (Coming Soon).



ASKING RATE

\$7,500/Mo. Plus NNN
(NNN Est. \$2,500)



AVAILABLE

Now



SQUARE FEET

±1,250 SF



LOCATION

1111 N Fairfax Ave
West Hollywood,
CA 90046



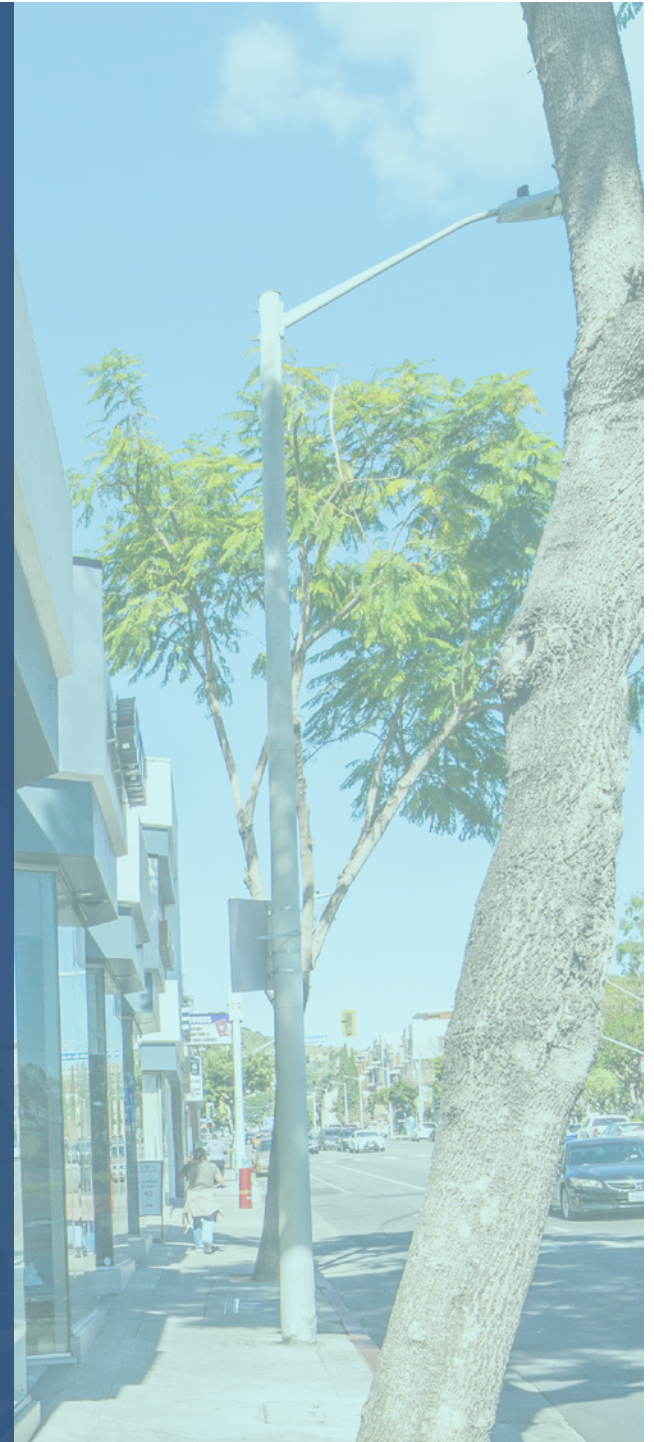
PARKING

Plentiful
On-site Parking

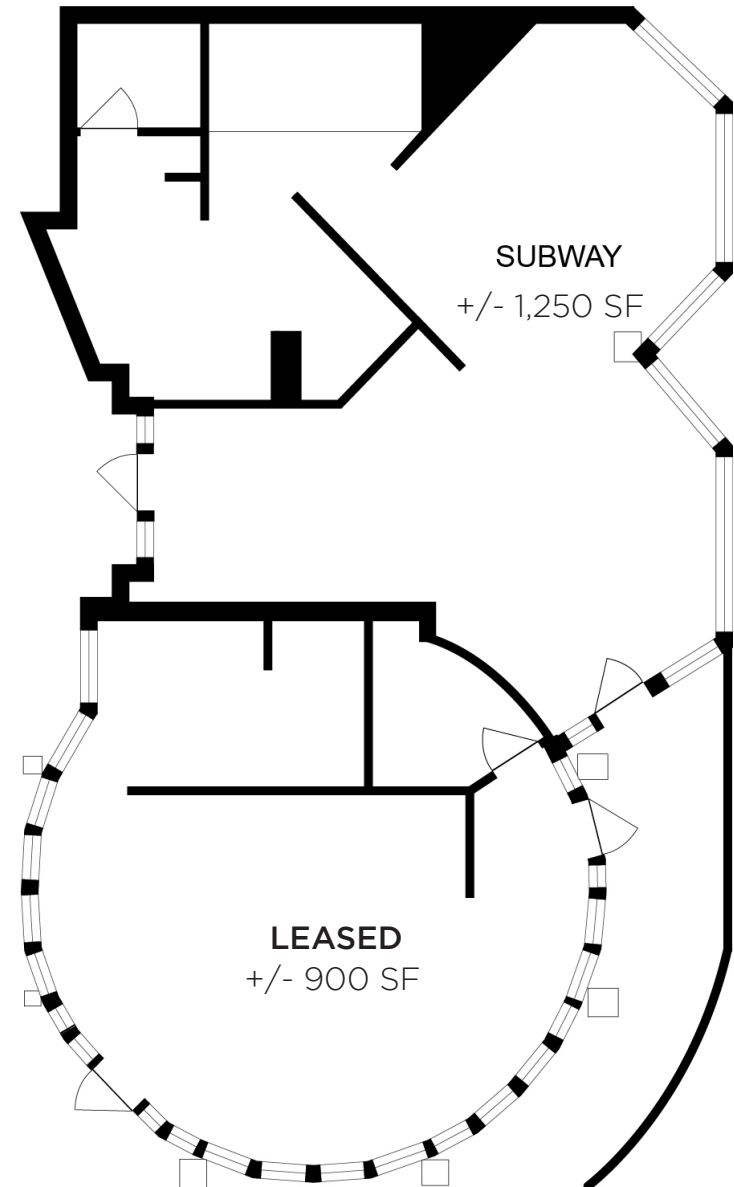


HIGH VISIBILITY

Very High Cars Per Day
Count



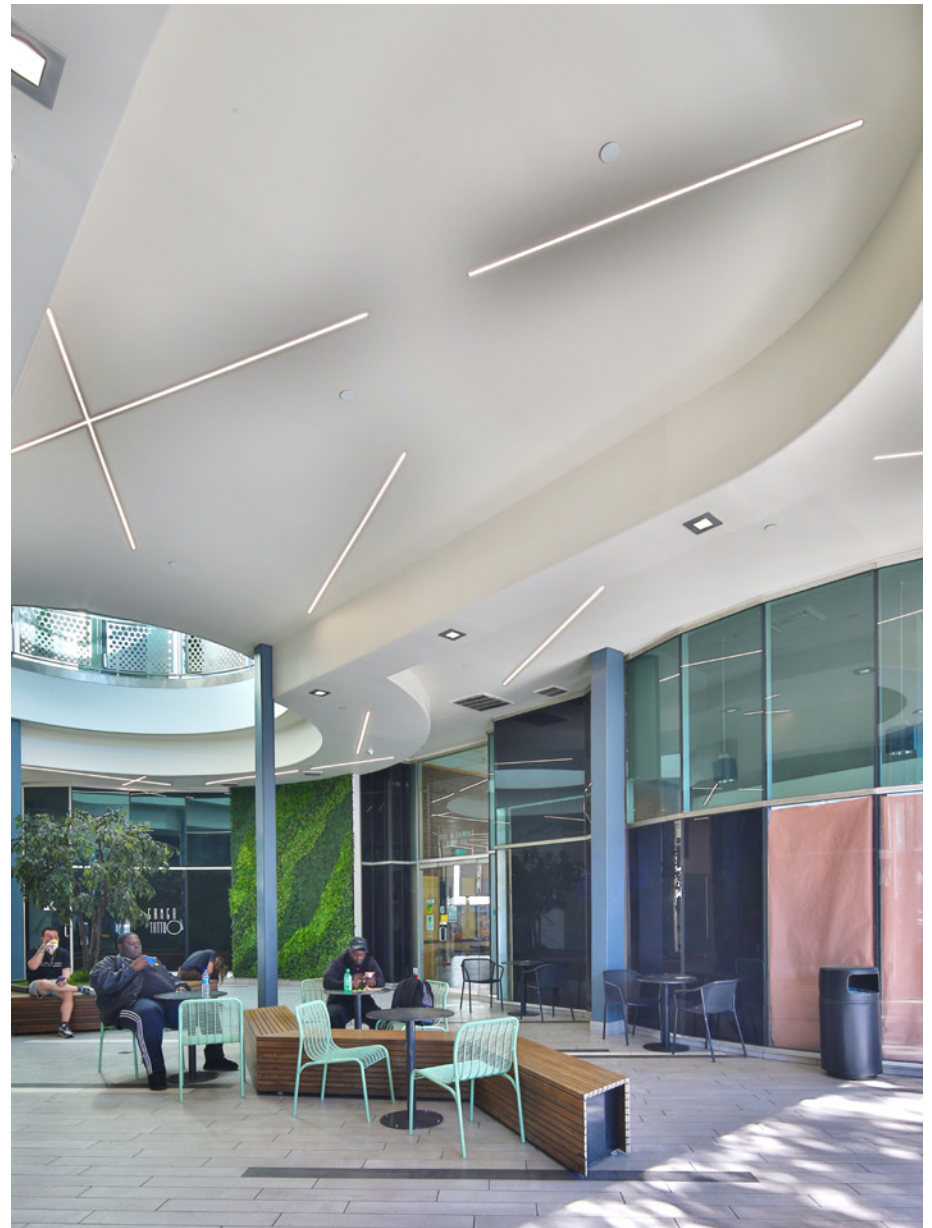
FLOOR PLAN



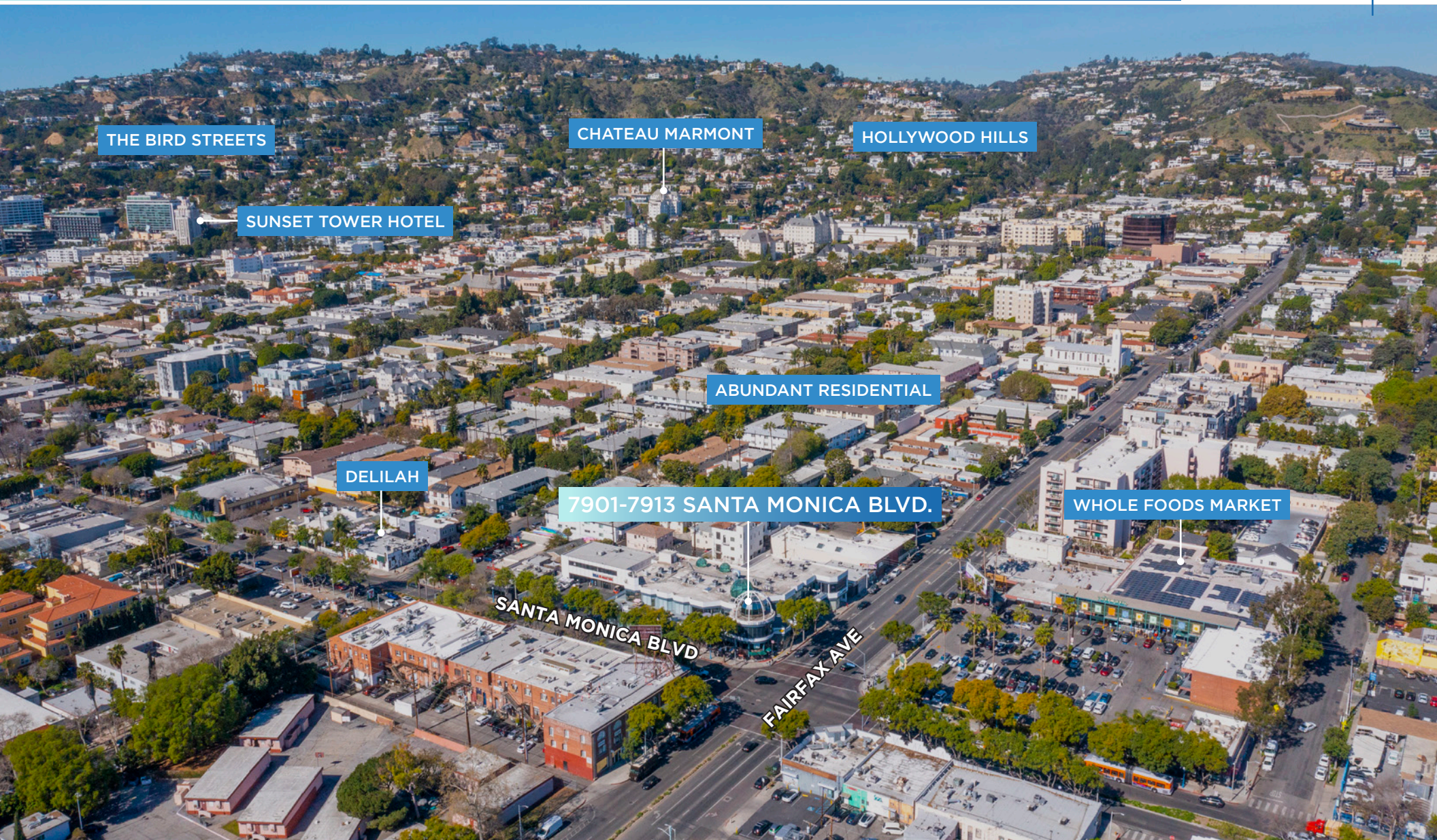
GREAT PATIO



OUTDOOR SPACE



THE AREA



THE BIRD STREETS

CHATEAU MARMONT

HOLLYWOOD HILLS

SUNSET TOWER HOTEL

ABUNDANT RESIDENTIAL

DELILAH

7901-7913 SANTA MONICA BLVD.

WHOLE FOODS MARKET

SANTA MONICA BLVD

FAIRFAX AVE

THE AREA



HOLLYWOOD

DOWNTOWN LOS ANGELES

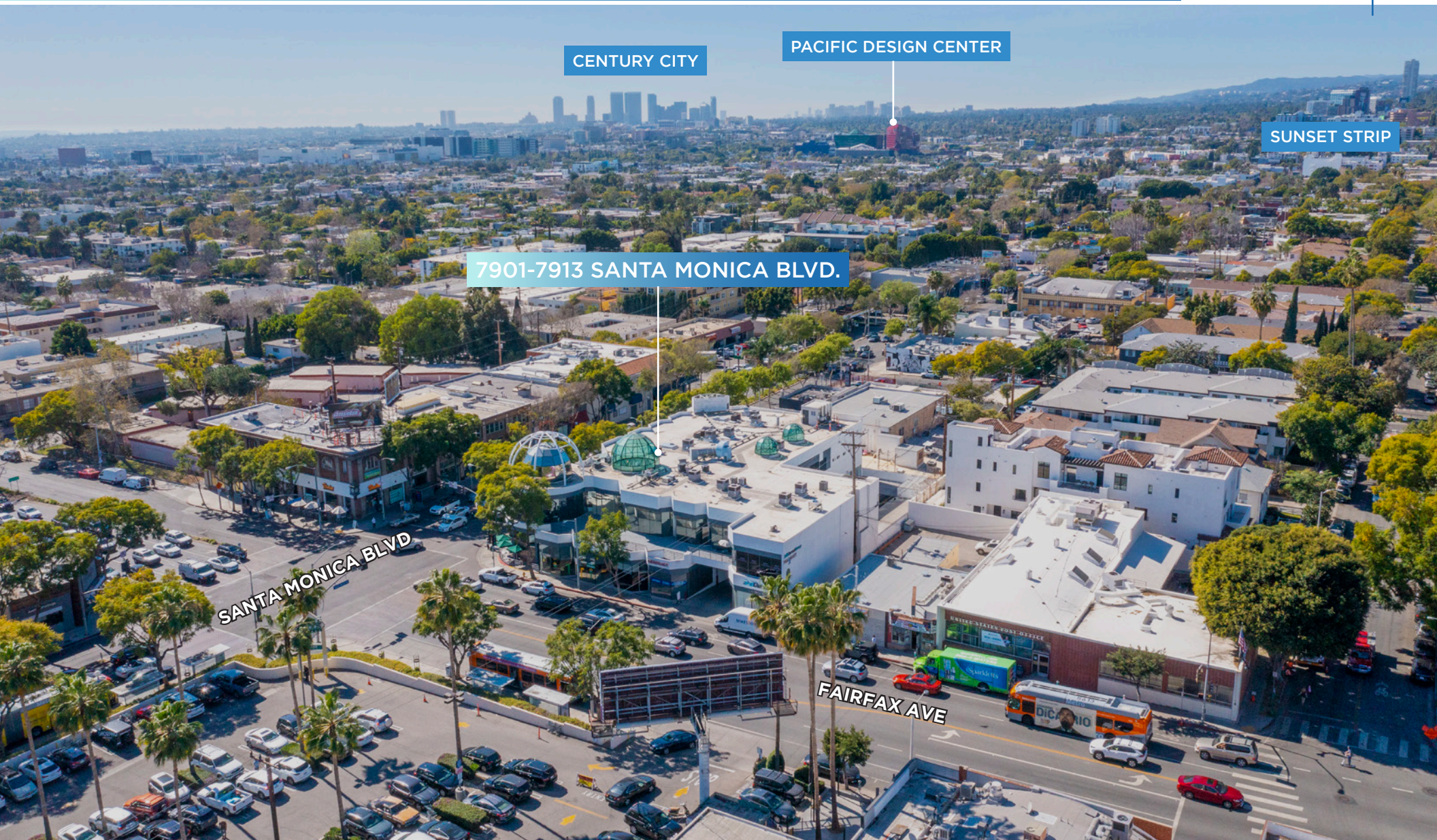
THE GROVE

7901-7913 SANTA MONICA BLVD.

FAIRFAX AVE

SANTA MONICA BLVD

THE AREA



CENTURY CITY

PACIFIC DESIGN CENTER

SUNSET STRIP

7901-7913 SANTA MONICA BLVD.

SANTA MONICA BLVD

FAIRFAX AVE

STRONG INCOME DEMOS

POPULATION

1 MILE 38,073

3 MILE 247,689

5 MILE 791,900

AVG HOUSEHOLD INCOME

1 MILE \$129,127

3 MILE \$128,465

5 MILE \$113,724

HOUSEHOLDS
WITHIN A
3 MILE RADIUS
ON AVG. MAKE NEARLY

\$129K

NUMBER OF LOCAL
BUSINESSES WITHIN
A 1-MILE RADIUS

4,715



DO NOT DISTURB TENANT

NEAL GOLUB

Lic. 01023733

+1 310 550 2667

neal.golub@cbre.com

RYAN GURMAN

Lic. 01972081

+1 310 650 7545

ryan.gurman@cbre.com

CBRE

© 2022 CBRE, Inc. All rights reserved. This information has been obtained from sources believed reliable, but has not been verified for accuracy or completeness. You should conduct a careful, independent investigation of the property and verify all information. Any reliance on this information is solely at your own risk. CBRE and the CBRE logo are service marks of CBRE, Inc. All other marks displayed on this document are the property of their respective owners, and the use of such logos does not imply any affiliation with or endorsement of CBRE. Photos herein are the property of their respective owners. Use of these images without the express written consent of the owner is prohibited.