

WILSON LANDING

37 SINGLE FAMILY LOTS
FARM DISTRICT ROAD | FERNLEY, NV



CONTACT THE KRUEGER LAND TEAM FOR MORE INFORMATION

Ryan Krueger
rkrueger@landadvisors.com
775.264.4152
NV LIC S.0175910

Dominic Polli
dpolli@landadvisors.com
775.264.4154
NV LIC S.0200906



775.264.4150 | LandAdvisors.com

EXECUTIVE SUMMARY



LOCATION

Farm District, Fernley, NV



SIZE

±10.93 Acres



PRICE

\$1,800,000 (\$48,648 per lot)



LOTS

37 Lots



PARCELS

021-171-50, 021-171-24



PROPERTY
FEATURES

- Recorded final map
- Partially finished lots with utilities stubbed to site
- Site is build ready upon close of escrow
- Water rights included
- Minimum lots size of 9,000 sq. ft.
- Minutes away from Fernley shopping center and industrial park
- 20 minute drive to TRIC (Tahoe Reno Industrial Center)
- Extensive due diligence file available upon request



DEMOGRAPHICS

	3 MILES	5 MILES
2024 Total Population	21,726	25,192
2029 Projected Population	22,893	26,384
2024 Average Household Income	\$100,976	\$101,749
2029 Average Projected Household Income	\$117,195	\$118,067
2024 Total Households	7,877	9,143
2029 Projected Total Households	8,428	9,717
2024 Average Household Size	2.76	2.75
Median Single Family New Home Price: \$389,990		

Source: esri, zonda



DETAIL | WILSON LANDING

Ryan Krueger | Dominic Polli | 775.264.4150 | landadvisors.com

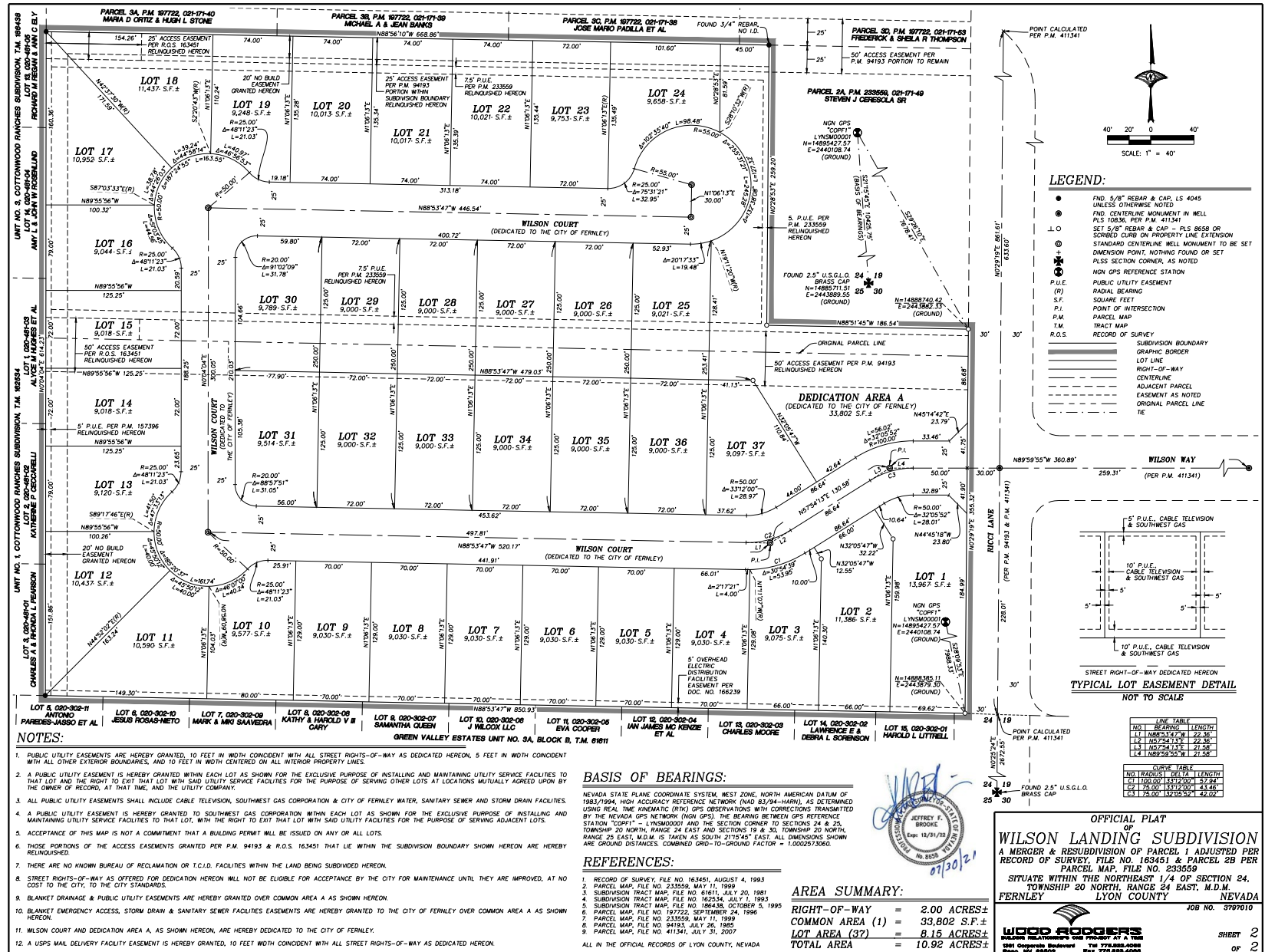


AMENITIES & ACTIVE HOME COMMUNITIES | WILSON LANDING

Ryan Krueger | Dominic Polli | 775.264.4150 | landadvisors.com



WILSON LANDING PLAT



FOR REVIEW ONLY

The information in this document and any attachments regarding any property has been obtained from sources believed reliable, but we have not verified it and we make no guarantee, warranty, or representation as to its accuracy or completeness, and we do not undertake to update or correct any of the information presented. Any projections, opinions, assumptions, or estimates ("forward-looking statements") used are, for example, only and do not represent the current or future performance of the property and actual results may differ materially from such forward-looking statement due to, without limitation, changes in: (i) the market, (ii) governmental legal, regulatory or permitted use changes, and (iii) other factors. You and your advisors should conduct a careful, independent investigation of the property to determine to your satisfaction the property's suitability for your needs. Any reliance on this information is at your own risk and is subject to change, prior sale or complete withdrawal. NVLyon284106 - 01.16.2025.



LandAdvisors.com