

FOR LEASE: CORNER RETAIL PAD IN BALENTINE PLAZA, NEWARK



MICHAEL BERUBE C: 650.678.9290 | Michael@Berube.com **MICHAEL MAXWELL BERUBE** C: 650.520.9382 | max@berube.com

The information contained herein has been provided by sources believed reliable. We do not doubt its accuracy or completeness but we have not verified it and make no guarantee, warranty or representation about it. The information should be verified and evaluated by professionals prior to entering into any contractual relationship relating to this information.

Berube
Company, Inc.

COMMERCIAL
REAL ESTATE

FOR LEASE

**39901 Balentine Drive,
Newark, CA 94560**

Corner-lot retail outparcel available for lease on the corner of Balentine Drive & Mowry School Road near the intersection of I-880 and Stevenson Boulevard. The property is situated on the northern edge of the Balentine Plaza Shopping Center anchored by Foodmaxx, and within 0.5 miles of NewPark Mall (Costco and Costco Gas Station, AMC NewPark12 Movie Theater, 24 Hr. Fitness), and Newark Auto Mall.

PARCELS

- 901-0197-001-00 & 901-0197-002-00

PROPERTY FACTS

- Building Size: 4,028 SF
- Land Size: 32,757 SF
- Zoning: Community Commercial (CC)
- Bldg. Built: 1986
- Prior Use: Fast Food – Carl's Jr. (LED Nov. 30, 2025)
- Parking: 38 Surface Spaces (9.69/1,000 SF)
- Power: 400 amps
- Signage: Monument panel available and building fascia opportunities
- Drive-Thru

DELIVERY

Delivered: broom-clean, FF&E removed; roof penetrations capped by LL; grease interceptor in place.

LISTED BY

Berube
Company, Inc.

COMMERCIAL
REAL ESTATE

Michael Berube | Lic. 00823822
Michael@Berube.com | C: 650.678.9290

Michael Maxwell Berube | Lic. 02295119
Max@Berube.com | C: 650.520.9382

The Berube Company, Inc. | Lic. 02325269
1700 S. El Camino Real
Penthouse
San Mateo, CA 94402
O: 650.574.7163 | C: 650.678.9290



UTILITIES/QSR SPECIFICATIONS

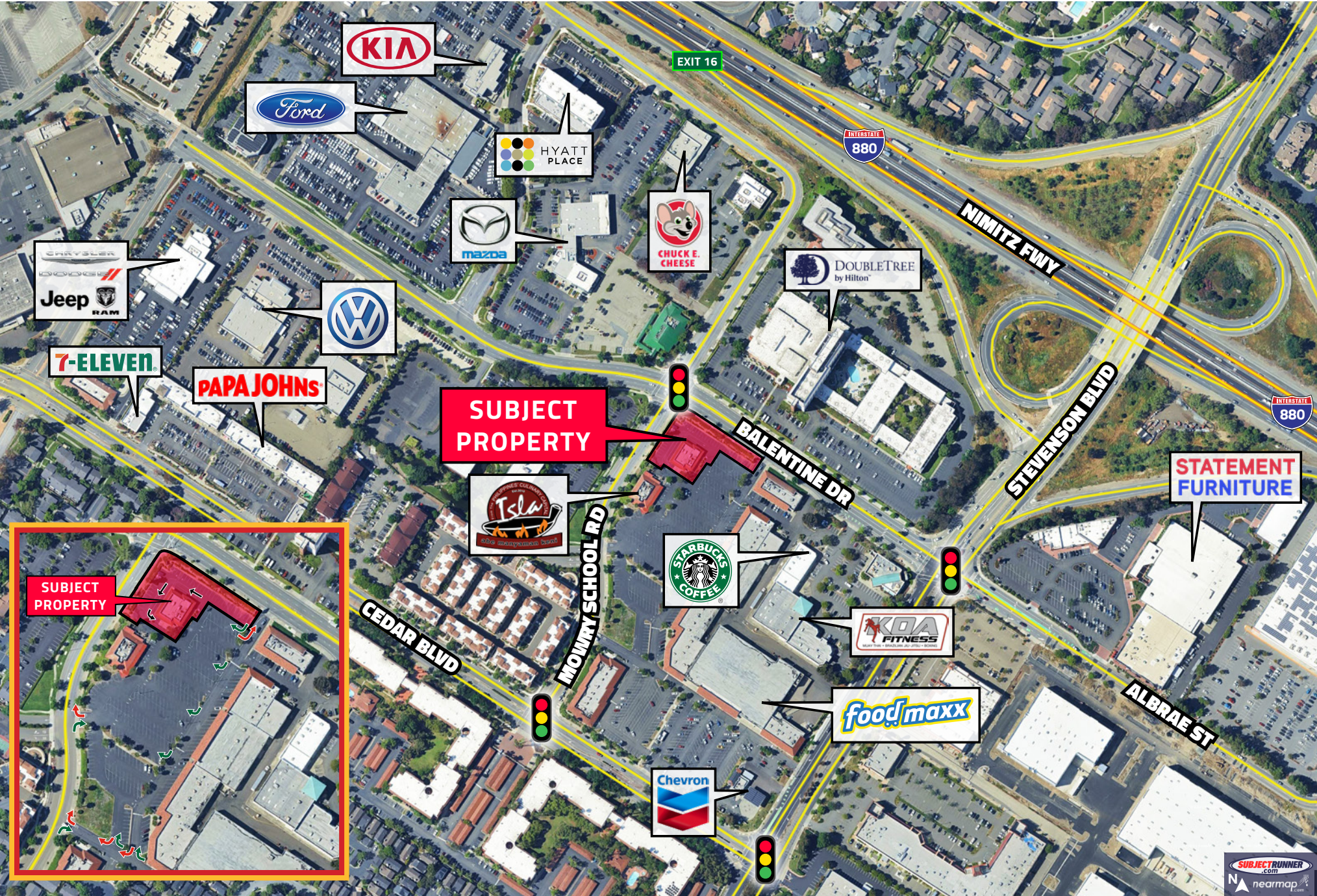
- Average HH Income (5 mi): \$177,089
- Median HH Income (5 mi): \$154,549
- 2024 Population (5 mi): \$271,437

OTHER INFORMATION

- Average HH Income (5 mi): \$177,089
- Median HH Income (5 mi): \$154,549
- 2024 Population (5 mi): \$271,437

2025 AVG DAILY TRAFFIC COUNTS:

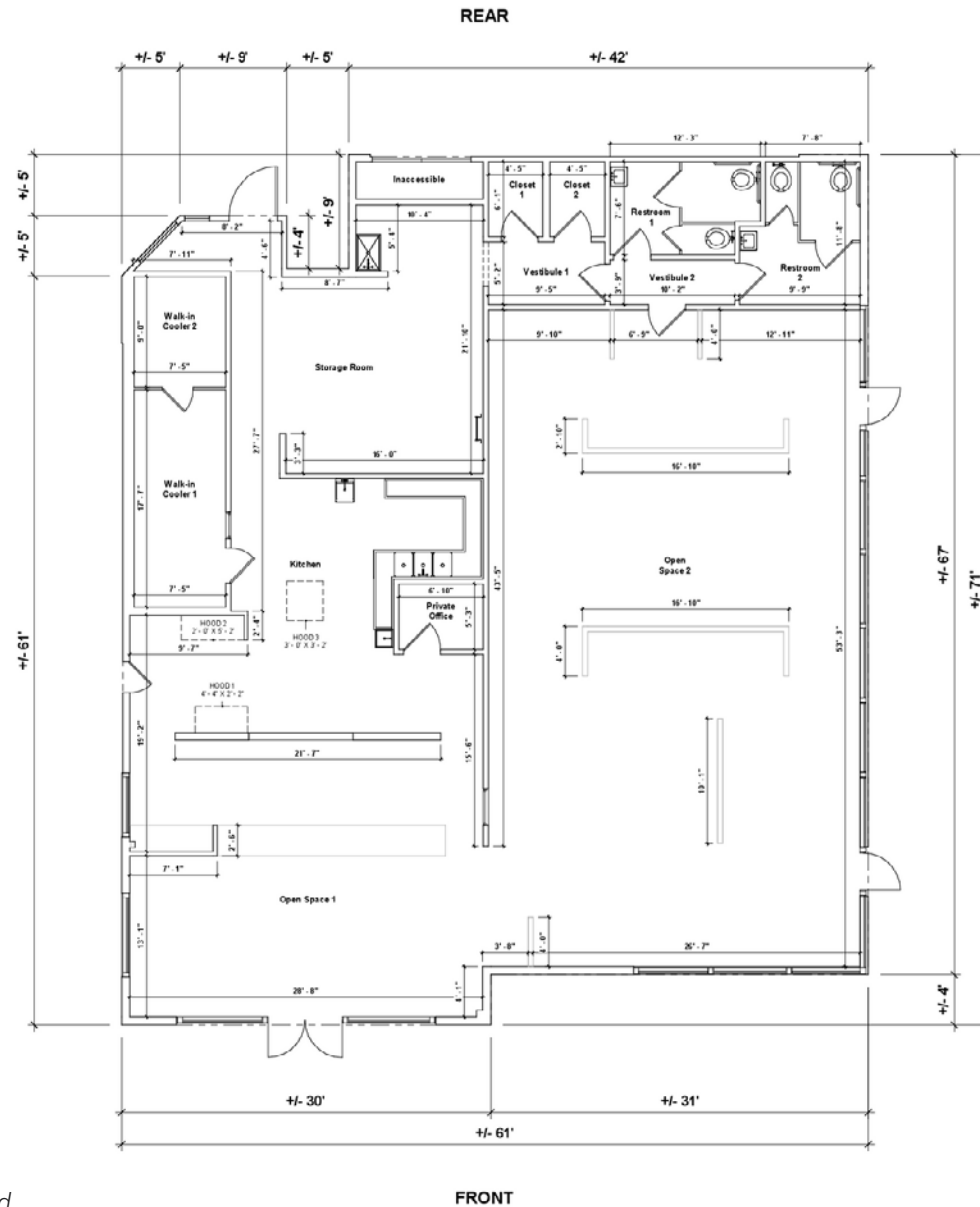
- Balentine/Mowry: 12,829 ADT
- Stevenson/I-880: 185,584 ADT
- I-880: 222,629 ADT (0.25 mi)







FLOOR PLAN



*Plan is illustrative; FF&E to be removed

MICHAEL BERUBE C: 650.678.9290 | Michael@Berube.com **MICHAEL MAXWELL BERUBE** C: 650.520.9382 | max@berube.com

Berube
Company, Inc.

The information contained herein has been provided by sources believed reliable. We do not doubt its accuracy or completeness but we have not verified it and make no guarantee, warranty or representation about it. The information should be verified and evaluated by professionals prior to entering into any contractual relationship relating to this information.

COMMERCIAL
REAL ESTATE