



1619 Calumet Drive, Sheboygan, WI.

Property Features

Prime redevelopment opportunity or commercial property at 1619 Calumet Dr, Sheboygan. This former car dealership sits on a prominent corner lot along Highway 42, Sheboygan's main north/south arterial, offering unmatched visibility with extensive frontage. The property features 100+ parking stalls. Located in the heart of Sheboygan, this rare site is ideal for various commercial uses, capitalizing on its high-traffic location and central population base. Don't miss out on this exceptional investment opportunity.

PRICE

\$749,000

PARCEL	59281600850
SALES OFFICE	2,979 SF
SERVICE CENTER	9,731 SF
LOT SIZE	1.2 ACRES
ZONING	URBAN COMMERCIAL

*0.6 ACRE LOT WITH 280' OF FRONTAGE WITH 2 BILLBOARD LEASES ALSO AVAILABLE FOR SALE. SEE NEXT PAGE.

For more information:

Dane Checolinski

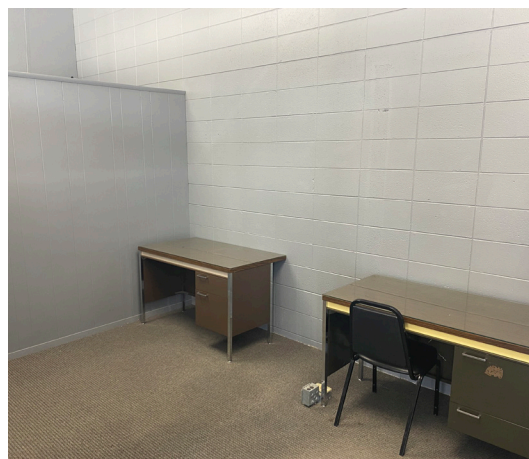
920.344.8732 • danec@naipfefferle.com

NO WARRANTY OR REPRESENTATION, EXPRESS OR IMPLIED, IS MADE AS TO THE ACCURACY OF THE INFORMATION CONTAINED HEREIN, AND THE SAME IS SUBMITTED SUBJECT TO ERRORS, OMISSIONS, CHANGE OF PRICE, RENTAL OR OTHER CONDITIONS, PRIOR SALE, LEASE OR FINANCING, OR WITHDRAWAL WITHOUT NOTICE, AND OF ANY SPECIAL LISTING CONDITIONS IMPOSED BY OUR PRINCIPALS NO WARRANTIES OR REPRESENTATIONS ARE MADE AS TO THE CONDITION OF THE PROPERTY OR ANY HAZARDS CONTAINED THEREIN ARE ANY TO BE IMPLIED.

3414 Mill Road
Sheboygan, WI
920.783.6330
naipfefferle.com



SALES OFFICE



- Several offices
- Large showroom
- Rooftop air conditioner/heater
- Lots of natural light
- 400 AMP service

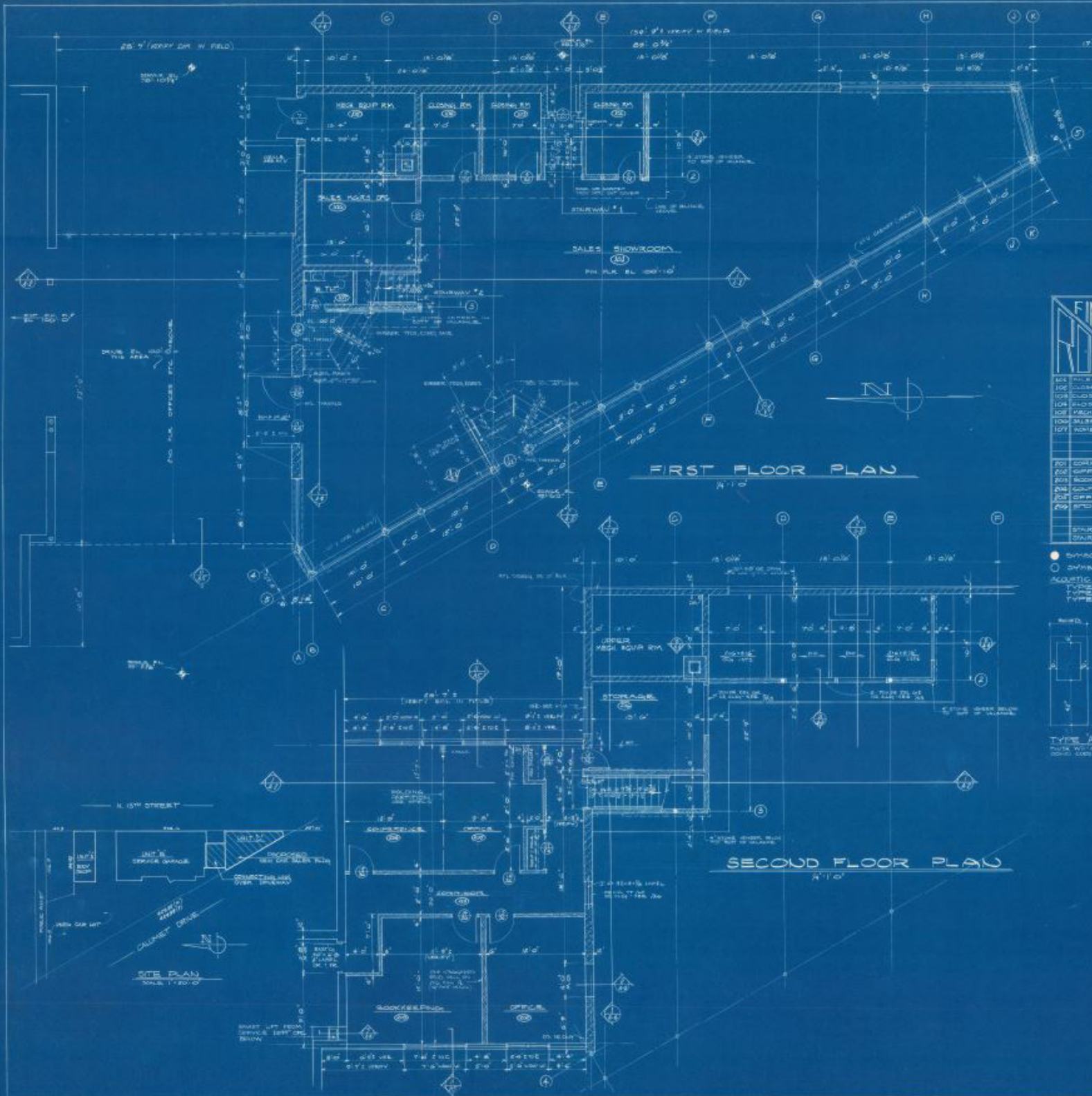


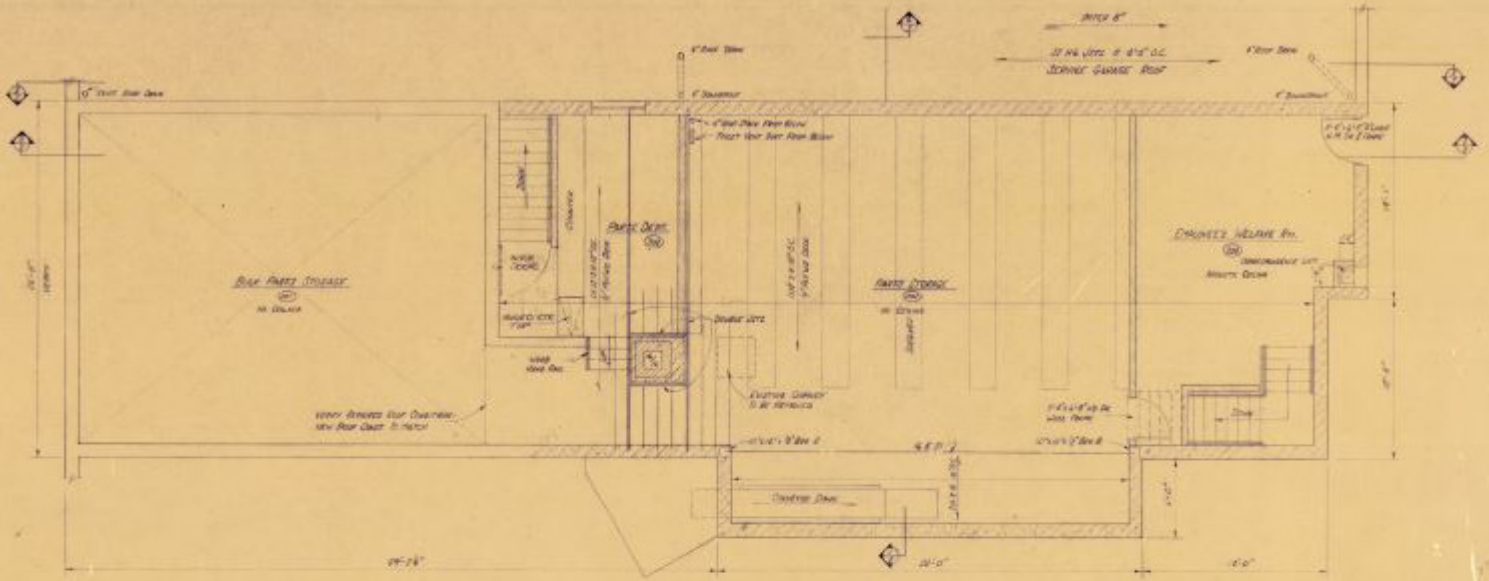
SERVICE BUILDING



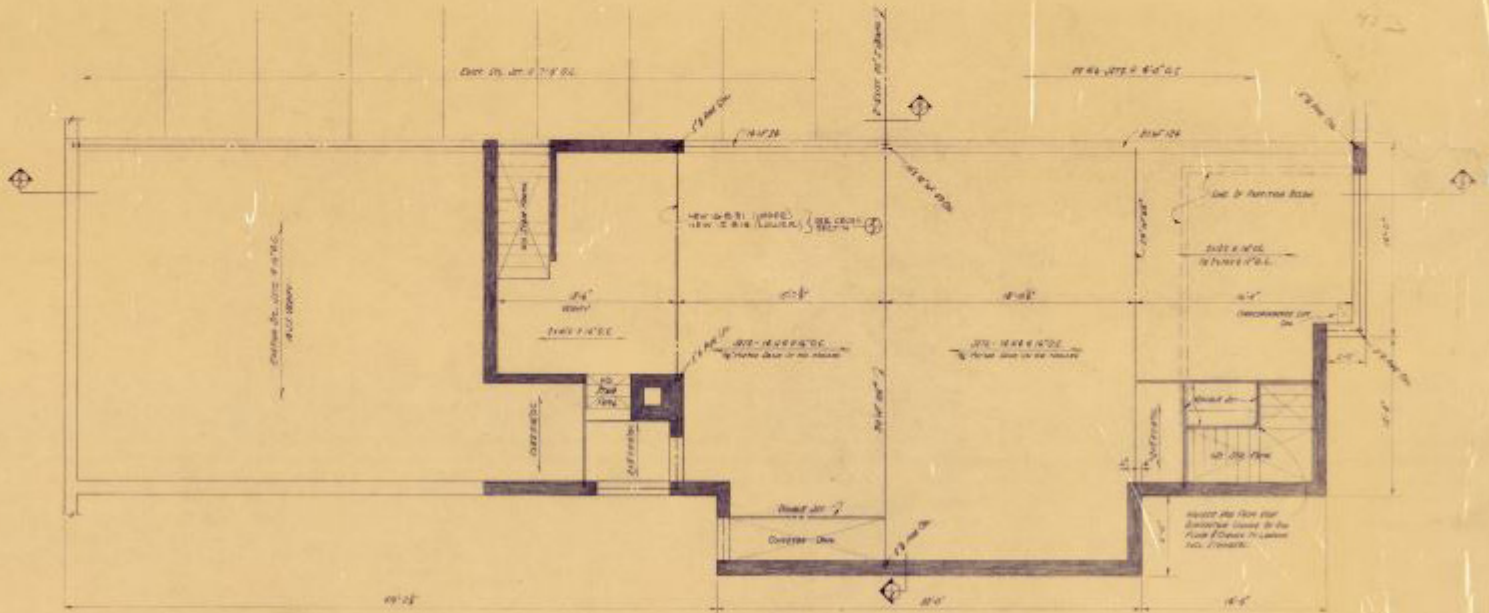
- 4 overhead doors (8' - 14')
- Several offices
- Space for vehicles
- Boiler heat

- 400 AMP 3-Phase service
- Partial basement
- Partial mezzanine





SECOND FLOOR PLAN / REAR ANNEX
DATE 11-1-14



SECOND FLOOR FRAMING PLAN
DATE 11-1-14



Demographics (1, 3 & 5 Mile Radius)

POPULATION



1 MILE:	17,786
3 MILES:	48,572
5 MILES:	64,614



EMPLOYEES

1 MILE:	6,912
3 MILES:	21,238
5 MILES:	31,078

AVERAGE INCOME



1 MILE:	\$73,208
3 MILES:	\$81,398
5 MILES:	\$88,388



BUSINESSES

1 MILE:	612
3 MILES:	1,431
5 MILES:	1,916

AVERAGE HOUSEHOLDS

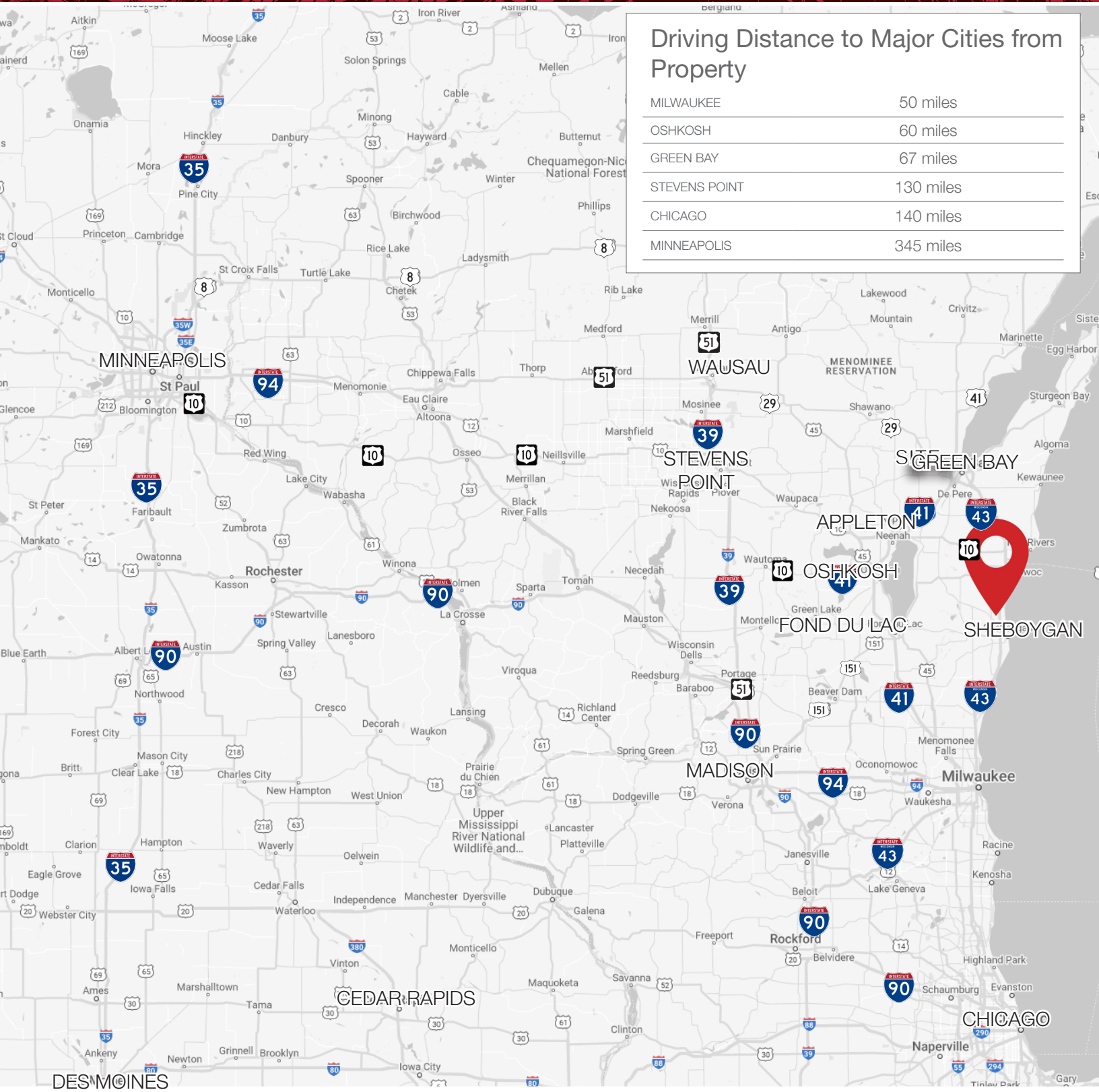


1 MILE:	7,651
3 MILES:	20,904
5 MILES:	27,661



TRAFFIC COUNTS

CALUMET DRIVE	15,397
SUPERIOR AVENUE	7,657



STATE OF WISCONSIN BROKER DISCLOSURE

Wisconsin law requires all real estate licensees to give the following information about brokerage services to prospective customers.

Prior to negotiating on your behalf the Brokerage firm, or an agent associated with the firm, must provide you the following disclosure statement.

Disclosure to Customers

You are a customer of NAI Pfefferle (hereinafter Firm). The Firm is either an agent of another party in the transaction or a subagent of another firm that is the agent of another party in the transaction. A broker or a salesperson acting on behalf of the Firm may provide brokerage services to you. Whenever the Firm is providing brokerage services to you, the Firm and its brokers and salespersons (hereinafter Agents) owe you, the customer, the following duties:

- The duty to provide brokerage services to you fairly and honestly.
- The duty to exercise reasonable skill and care in providing brokerage services to you.
- The duty to provide you with accurate information about market conditions within a reasonable time if you request it, unless disclosure of the information is prohibited by law.
- The duty to disclose to you in writing certain Material Adverse Facts about a Property, unless disclosure of the information is prohibited by law.
- The duty to protect your confidentiality. Unless the law requires it, the Firm and its Agents will not disclose your confidential information or the confidential information of other parties.
- The duty to safeguard trust funds and other property held by the Firm or its Agents.
- The duty, when negotiating, to present contract proposals in an objective and unbiased manner and disclose the advantages and disadvantages of the proposals.

Please review this information carefully. An Agent of the Firm can answer your questions about brokerage services, but if you need legal advice, tax advice, or a professional home inspection, contact an attorney, tax advisor, or home inspector. This disclosure is required by section 452.135 of the Wisconsin statutes and is for information only. It is a plain-language summary of the duties owed to a customer under section 452.133(1) of the Wisconsin statutes.

Confidentiality Notice to Customers

The Firm and its Agents will keep confidential any information given to the Firm or its Agents in confidence, or any information obtained by the Firm or its Agents that a reasonable person would want to be kept confidential, unless the information must be disclosed by law or you authorize the Firm to disclose particular information. The Firm and its Agents shall continue to keep the information confidential after the Firm is no longer providing brokerage services to you.

No representation is made as to the legal validity of any provision or the adequacy of any provision in any specific transaction.

The following information is required to be disclosed by law:

1. Material Adverse Facts, as defined in section 452.01(5g) of the Wisconsin Statutes (see definition below).
2. Any facts known by the Firm or its Agents that contradict any information included in a written inspection report on the property or real estate that is the subject of the transaction.

To ensure that the Firm and its Agents are aware of what specific information you consider confidential, you may list that information below or provide that information to the Firm or its Agents by other means. At a later time, you may also provide the Firm or its Agents with other information you consider to be confidential.

CONFIDENTIAL INFORMATION

NON-CONFIDENTIAL INFORMATION

(the following information may be disclosed to the Firm and its Agents)

(Insert information you authorize to be disclosed, such as financial qualification information.)

Definition of Material Adverse Facts

A "Material Adverse Fact" is defined in Wis. Stat. 452.01(5g) as an Adverse Fact that a party indicates is of such significance, or that is generally recognized by a competent licensee as being of such significance to a reasonable party, that it affects or would affect the party's decision to enter into a contract or agreement concerning a transaction or affects or would affect the party's decision about the terms of such a contract or agreement.

An "Adverse Fact" is defined in Wis. Stat. 452.01(1e) as a condition or occurrence that a competent licensee generally recognizes will significantly and adversely affect the value of the property, significantly reduce the structural integrity of improvements to real estate, or present a significant health risk to occupants of the property; or information that indicates that a party to a transaction is not able to or does not intend to meet his or her obligations under a contract or agreement made concerning the transaction.

Notice About Sex Offender Registry

You may obtain information about the sex offender registry and persons registered with the registry by contacting the Wisconsin Department of Corrections on the Internet at <http://www.doc.wi.gov> or by telephone at 608-240-5830.