

48580 KATO ROAD

FREMONT, CA



AVAILABLE
FOR SALE OR LEASE

YOUR NAME HERE

Freestanding **±75,068 SF** Industrial Manufacturing Building on **±4.16 Acres**

- ◆ Freeway Frontage on I-880
- ◆ New 3,600 kVA Transformer

NEWMARK



MIKE SPIRO

Executive Managing Director
t 510-681-7918
mike.spiro@nmrk.com
CA RE LIC. #01433395

JEFF TREMOLADA

Principal
t 415-250-4585
jefft@axiantgroup.com
CA RE LIC. #00809959

BUILDING FEATURES



Freestanding $\pm 75,068$ SF Industrial Manufacturing Building on ± 4.16 Acres



Dedicated 2,500 Amps @ 277/480 Volts Power Service



Additional Power Available! New PG&E Transformer Rated at 3,600 KVA



$\pm 26,200$ SF Two-Story Office Area with Natural Light



$\pm 20,600$ SF Lab/Assembly Areas with ESD Flooring & Distributed Power Drops



$\pm 25,300$ SF Open Ceiling Warehouse and Manufacturing Areas



Dock and Grade Level Loading



Rare Frontage On I-880 with Freeway Signage Available

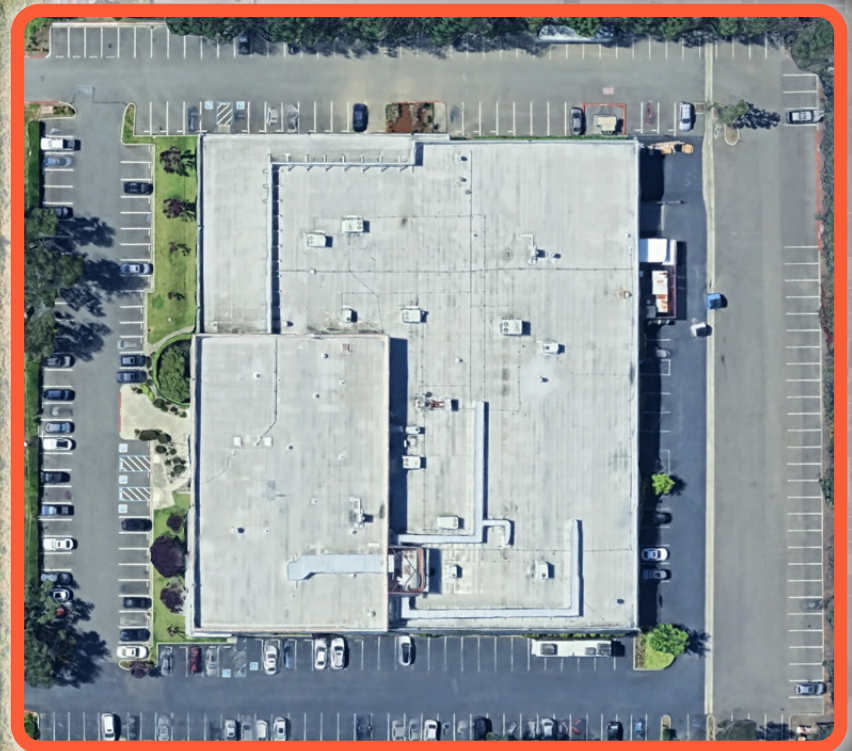


Large $\pm 1,000$ SF Equipment Pad



Sale/Lease Pricing: Contact Brokers

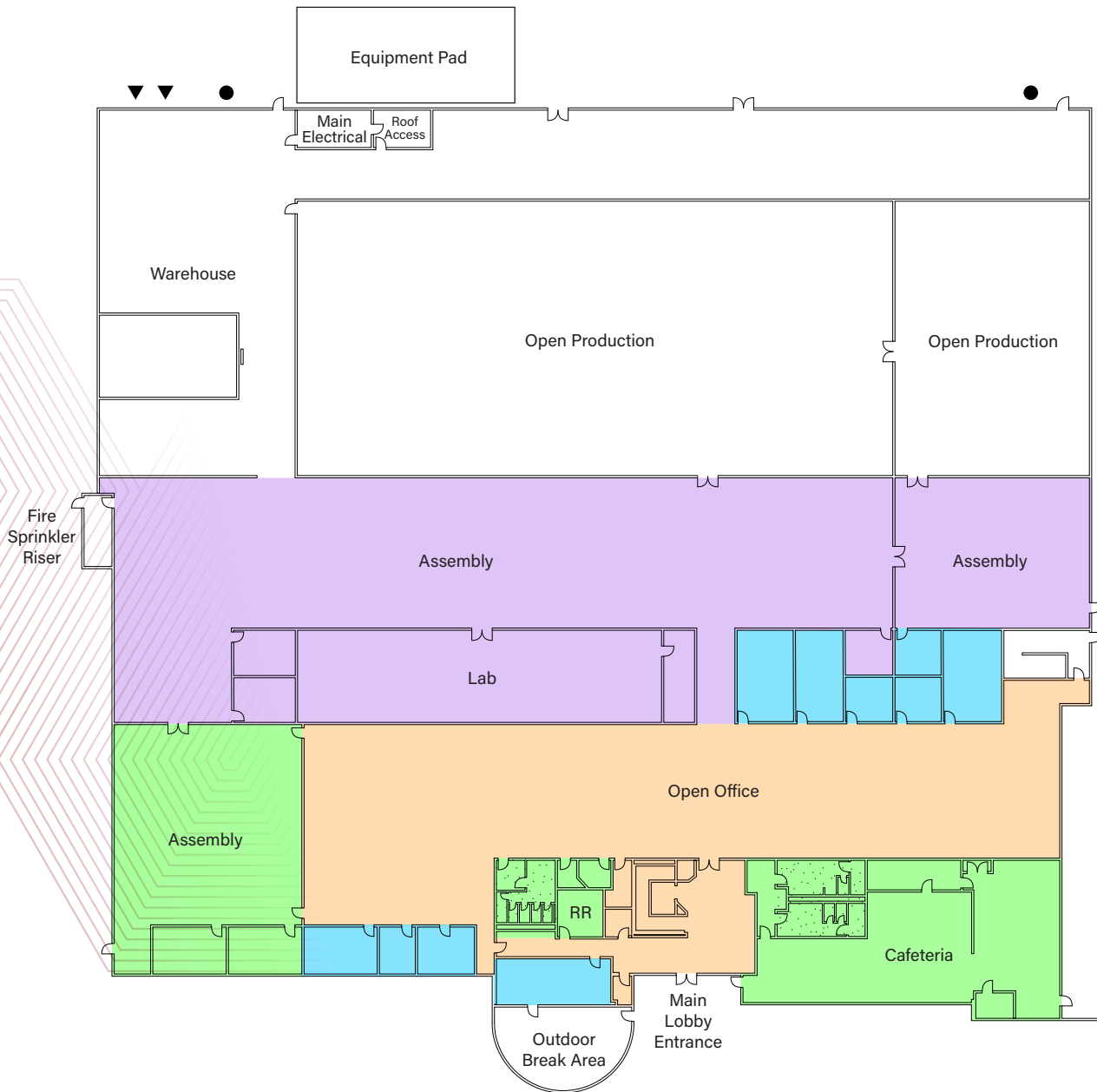
Frontage on I-880
200,000 Average Daily Vehicles



KATO RD

FLOOR PLAN

1ST FLOOR



- Concrete, High Ceiling
- VCT Flooring
- ESD Flooring
- Carpet, Drop Ceiling
- Carpet, Private Office/Conference Room
- Oversized Grade Level Loading Door
- Dock High Loading Door with Pit Leveler

2ND FLOOR

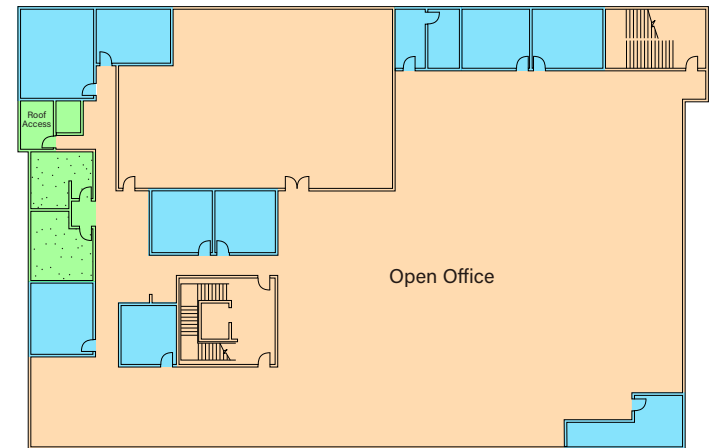


PHOTO GALLERY



LOADING AREA



LARGE REAR PARKING AREA



3,600 kVA TRANSFORMER

CORPORATE NEIGHBORS





CONTACT US

MIKE SPIRO

Executive Managing Director
t 510-681-7918
mike.spiro@nrmk.com
CA RE LIC. #01433395

JEFF TREMOLADA

Principal
t 415-250-4585
jefft@axiantgroup.com
CA RE LIC. #00809959

48580 KATO ROAD

FREMONT, CA

NEWMARK

 **The Axiant Group**
COMMERCIAL REAL ESTATE SERVICES

1111 Broadway, Suite 100, Oakland, CA 94607

The distributor of this communication is performing acts for which a real estate license is required. The information contained herein has been obtained from sources deemed reliable but has not been verified and no guarantee, warranty or representation, either express or implied, is made with respect to such information. Terms of sale or lease and availability are subject to change or withdrawal without notice. **MP-1435 • 09/24**