



RETAIL FOR LEASE ▾


101 W. Morehead Street

Charlotte, NC 28202



ABOUT THE PROPERTY ▾

Located on the ground level of The Crown of Queen City apartment building, this 926 SF second-generation coffee space is ready for immediate use. Positioned at the highly visible corner of S. Tryon St. and W. Morehead St., it offers convenient access to both South End and Uptown Charlotte. Perfect for capturing foot traffic from nearby residents, professionals, and commuters, this space is a unique opportunity to establish a thriving café in one of Charlotte's most dynamic areas.

 101 W. Morehead St, Charlotte, NC 28202

Space Available 926 SF

Delivery Condition 2nd Generation Coffee Shop

Target Use Retail/Coffee

Site Features

- Turnkey space
- To-go window
- Located below 260 apartments
- High visibility corner location
- Two blocks from Carson Light Rail Station
- 25,000 VPD on W. Morehead Street
- Easy access from South End, Uptown and Dilworth



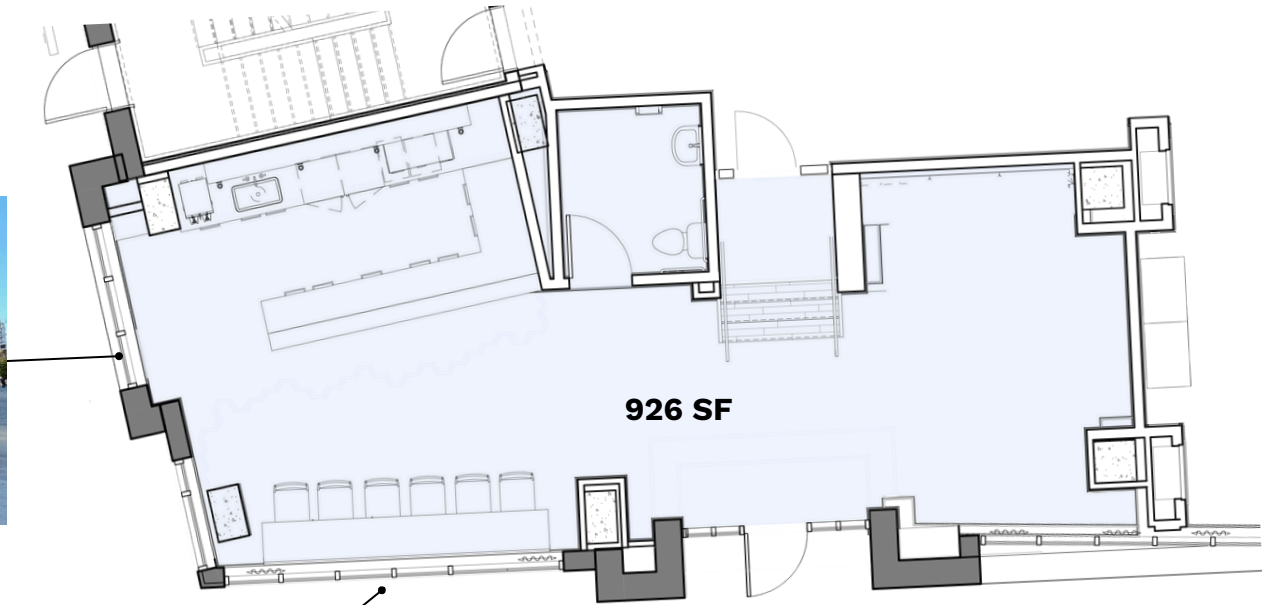
PROPERTY DETAILS

LOCATION

FLOOR PLAN

CONTACT







101 W. MOREHEAD | CHARLOTTE, NC



PROPERTY DETAILS

LOCATION

FLOOR PLAN

CONTACT

GET IN TOUCH ▾



Jay Mitchener

Jay@ThriftCRES.com

704-576-2772