

FOR LEASE: 3,094± SF Shared Office/Industrial With Yard Space — Available Now

**16250 VINEYARD BLVD,
MORGAN HILL, CA**



MEACHAM/OPPENHEIMER, INC.

8 N San Pedro St #300

San Jose, CA 95110 | www.moinc.net

Bobby Facchino

Associate

Lic. #02178873

bobby@moinc.net

(408) 318-0623

Keon Vossoughi

Vice President

Lic. #01019117

keon@moinc.net

(408) 477-2515

Exterior Photos



Property Highlights



- 3,094 SF Office/Industrial unit with Shared Yard Space.
- 6 Private Offices and a Conference Room
- 2 ADA Restrooms
- Includes 650 SF Creative Space!
- \$8,750/mo. Full-Service Lease!*
- AVAILABLE NOW

* Includes expenses such as water, PG&E, Taxes, Insurance, etc.

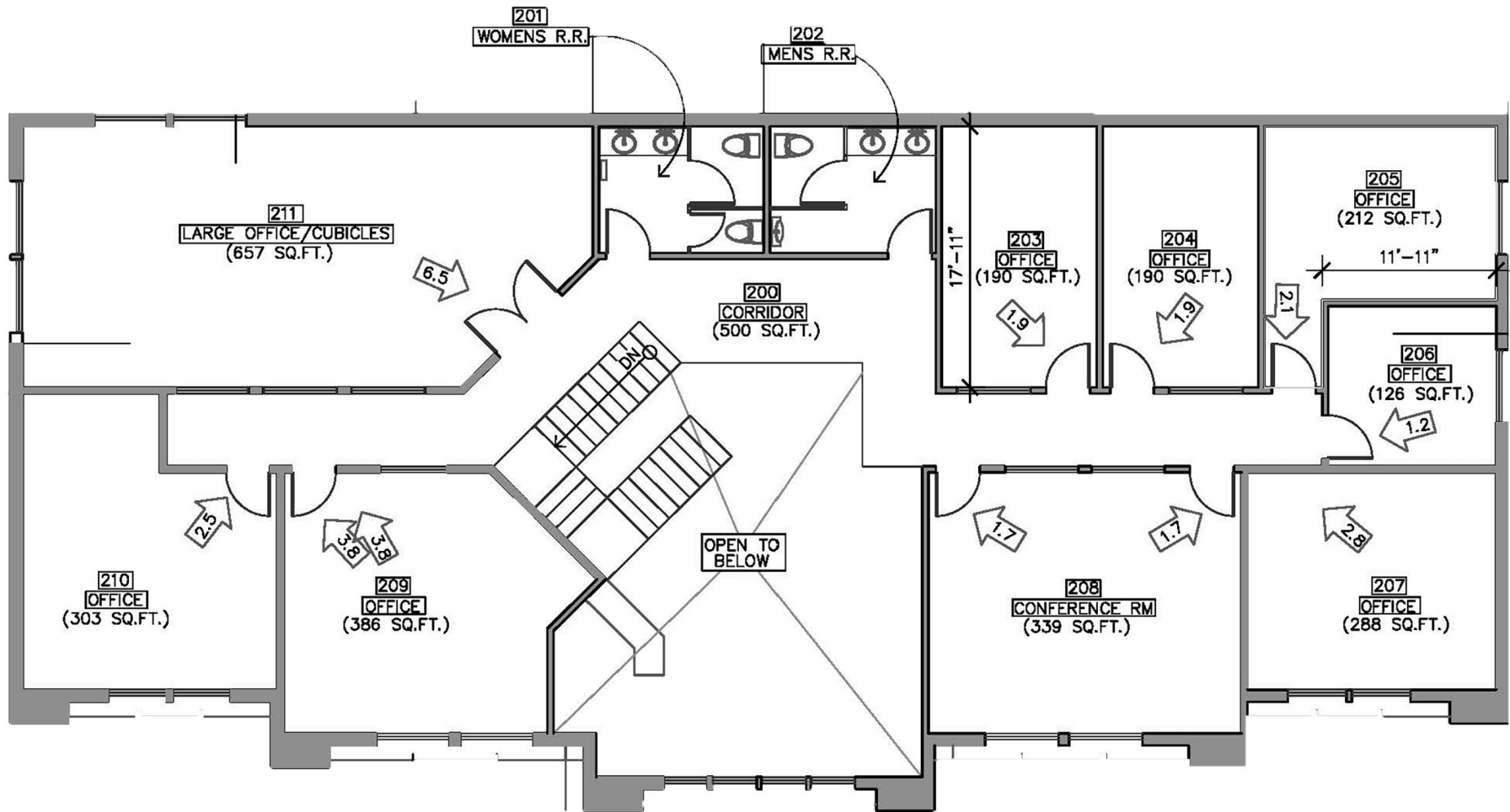
Interior Photos



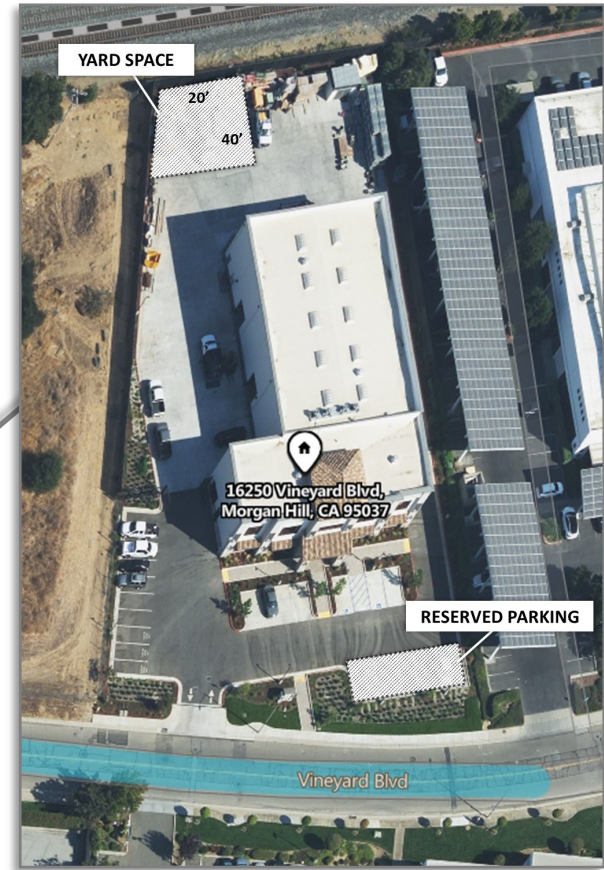
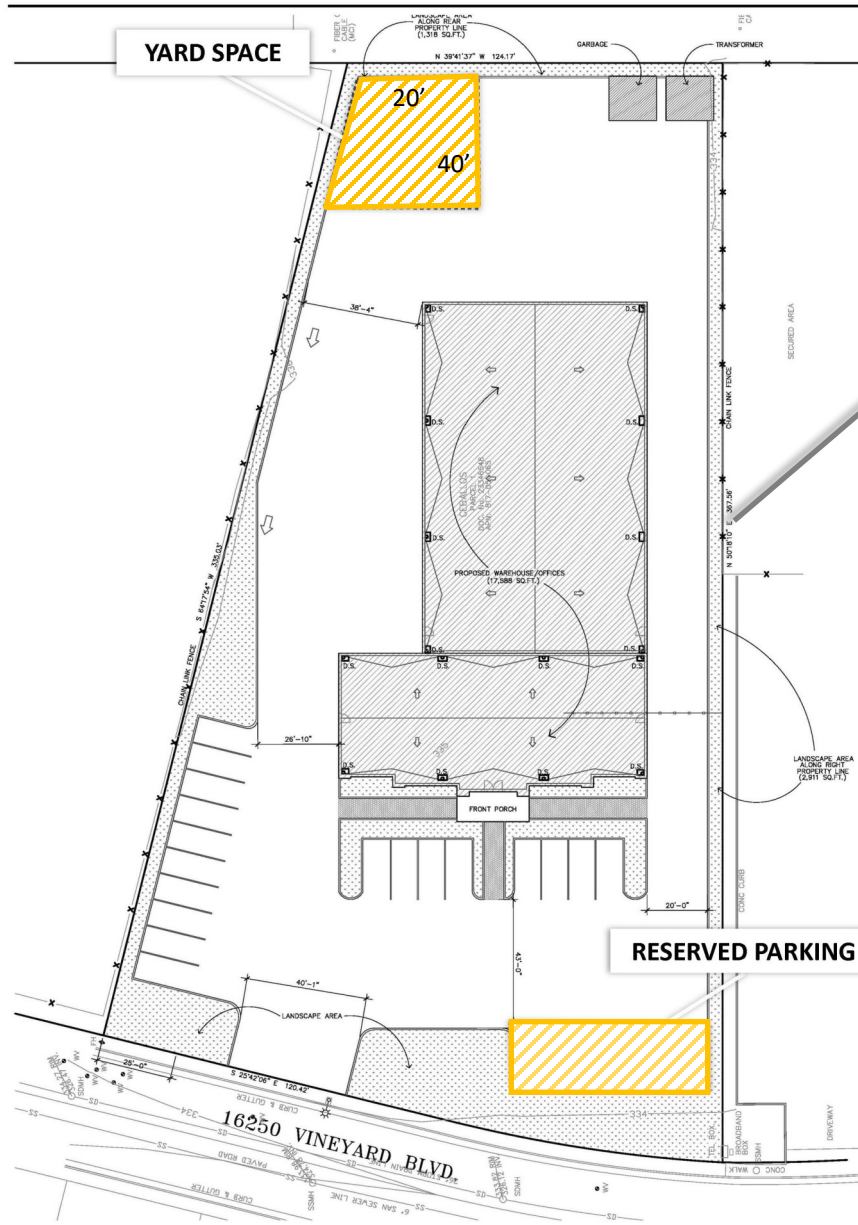
600 SF Creative Space



Site Map: 2nd Floor



Site Map/Aerial View



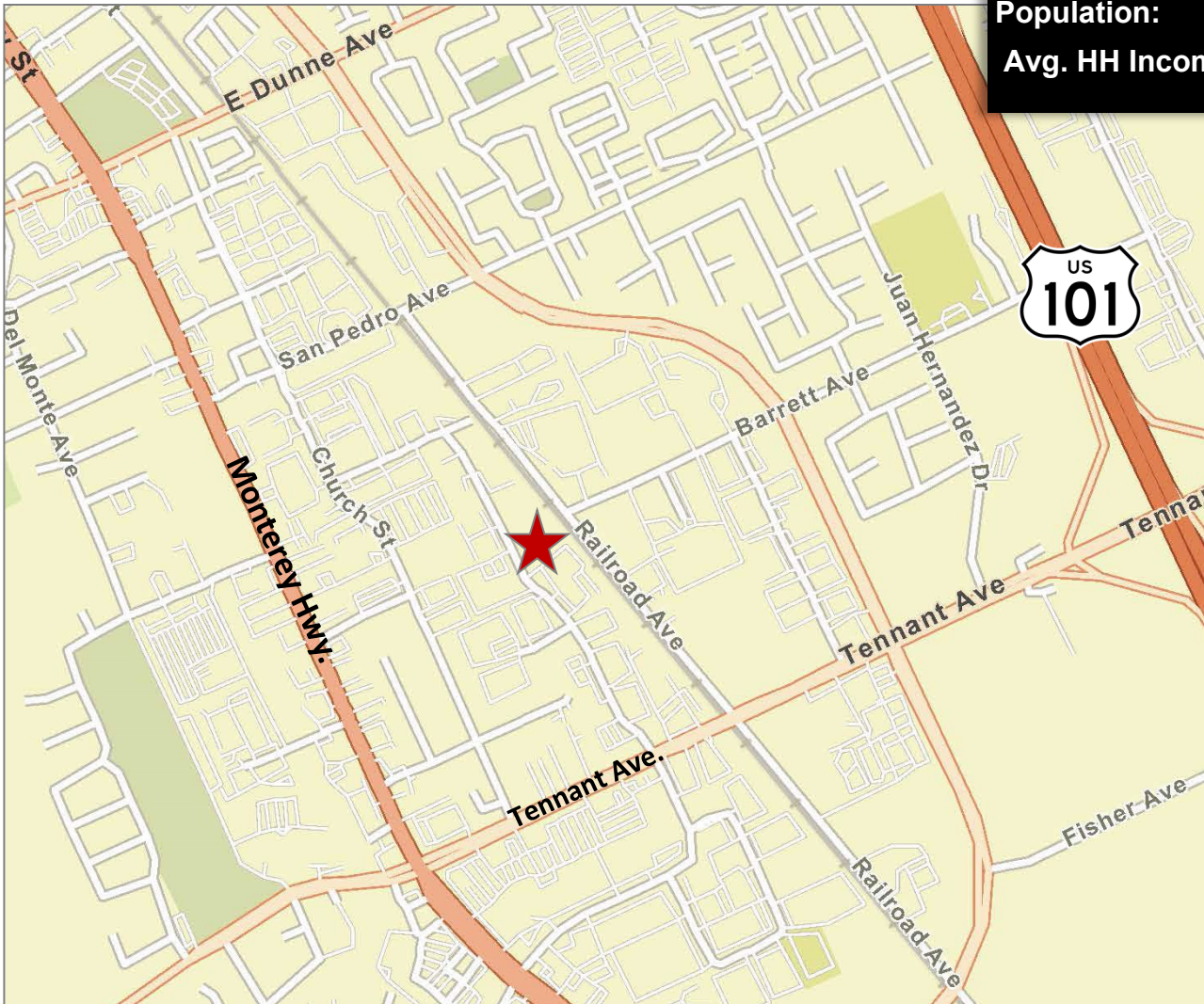
Aerial View



16250 VINEYARD BLVD, MORGAN HILL, CA

Estimated Demographics

	<u>1 Mile</u>	<u>3 Miles</u>	<u>5 miles</u>
Population:	12,832	49,839	59,917
Avg. HH Income:	\$143,140	\$188,424	192,761



Bobby Facchino

Associate
Lic. #02178873
bobby@moinc.net
(408) 318-0623

Keon Vossoughi

Vice President
Lic. #01019117
keon@moinc.net
(408) 477-2515



COMMERCIAL BROKERAGE | INVESTMENT SALES | PROPERTY MANAGEMENT

8 No. San Pedro Street, Suite 300 San Jose, California 95110

Tel: 408.378.5900 | www.moinc.net