

**25120 EASY STREET
WARREN, MICHIGAN**

INDUSTRIAL FOR SALE OR LEASE

For Sale: 12,380 Square Feet

For Lease: 9,380 Square Feet



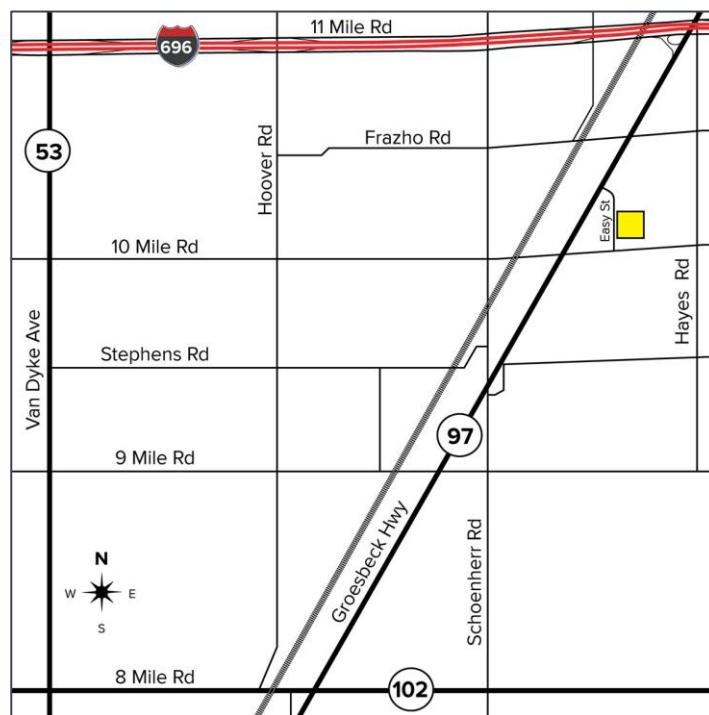
**SIGNATURE
ASSOCIATES**
KNOW SIGNATURE | KNOW RESULTS

GREAT BUILDING



PROPERTY FEATURES

- 12,380 square foot building for sale
- 9,380 square feet available for lease
- 1,080 square feet of office
- Rear 3,000 square feet is leased until Nov. 2027
- 14'-20' clear height
- (1) 12' x 12' grade level door
- Zoned M-2
- 50 parking spaces in fenced, paved lot
- 1000 amps, 240/480 volts power
- 60' clear-span shop
- Lease Rate: \$5.95/sq. ft. NNN
- Sale Price: \$850,000 (\$68.66/sq. ft.)



For more information, please contact:

JOE HAMWAY

(248) 948 0113

jhamway@signatureassociates.com

SIGNATURE ASSOCIATES

One Towne Square, Suite 1200

Southfield, MI 48076

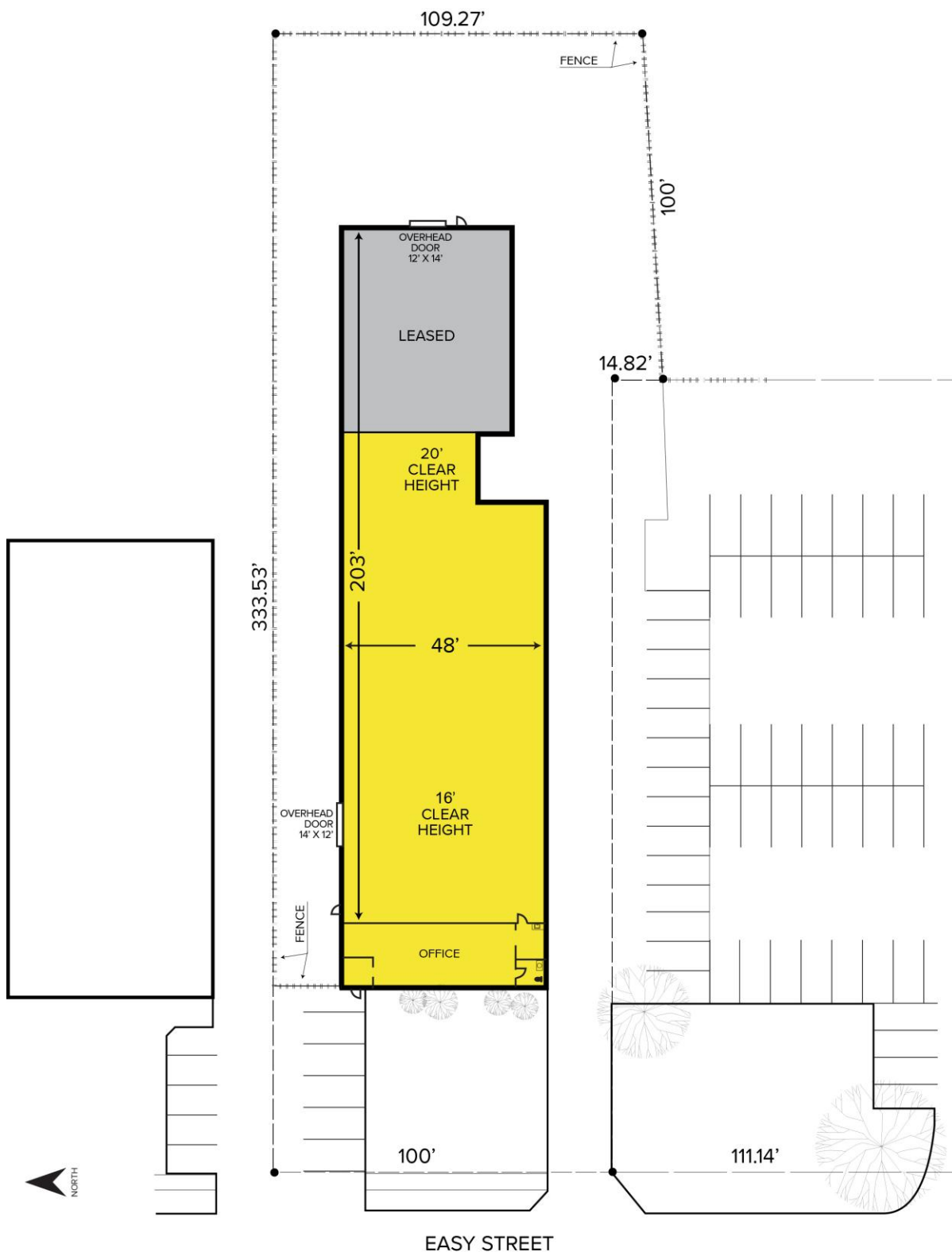
www.signatureassociates.com

25120 Easy Street - Warren, Michigan

Industrial For Sale or Lease

For Lease –
9,380 SF
For Sale –
12,380 SF

Site Plan



For more information, please contact:

JOE HAMWAY

(248) 948 0113

jhamway@signatureassociates.com

SIGNATURE ASSOCIATES
One Towne Square, Suite 1200
Southfield, MI 48076
www.signatureassociates.com

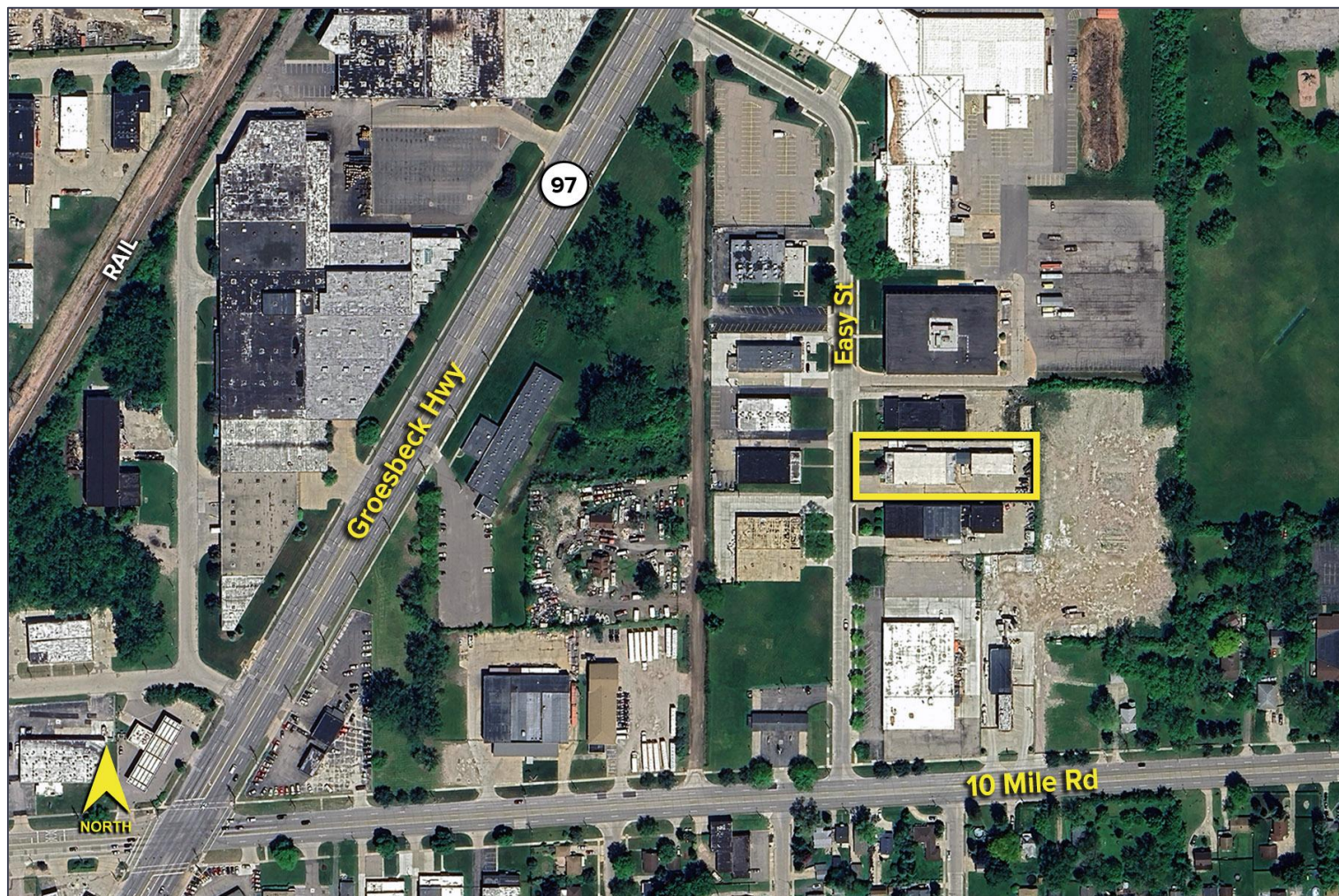
Information is subject to verification and no liability for errors or omissions is assumed. Price is subject to change and listing withdrawal.

25120 Easy Street - Warren, Michigan

Industrial For Sale or Lease

For Lease –
9,380 SF
For Sale –
12,380 SF

Aerial



For more information, please contact:

JOE HAMWAY
(248) 948 0113
jhamway@signatureassociates.com

SIGNATURE ASSOCIATES
One Towne Square, Suite 1200
Southfield, MI 48076
www.signatureassociates.com

Information is subject to verification and no liability for errors or omissions is assumed. Price is subject to change and listing withdrawal.