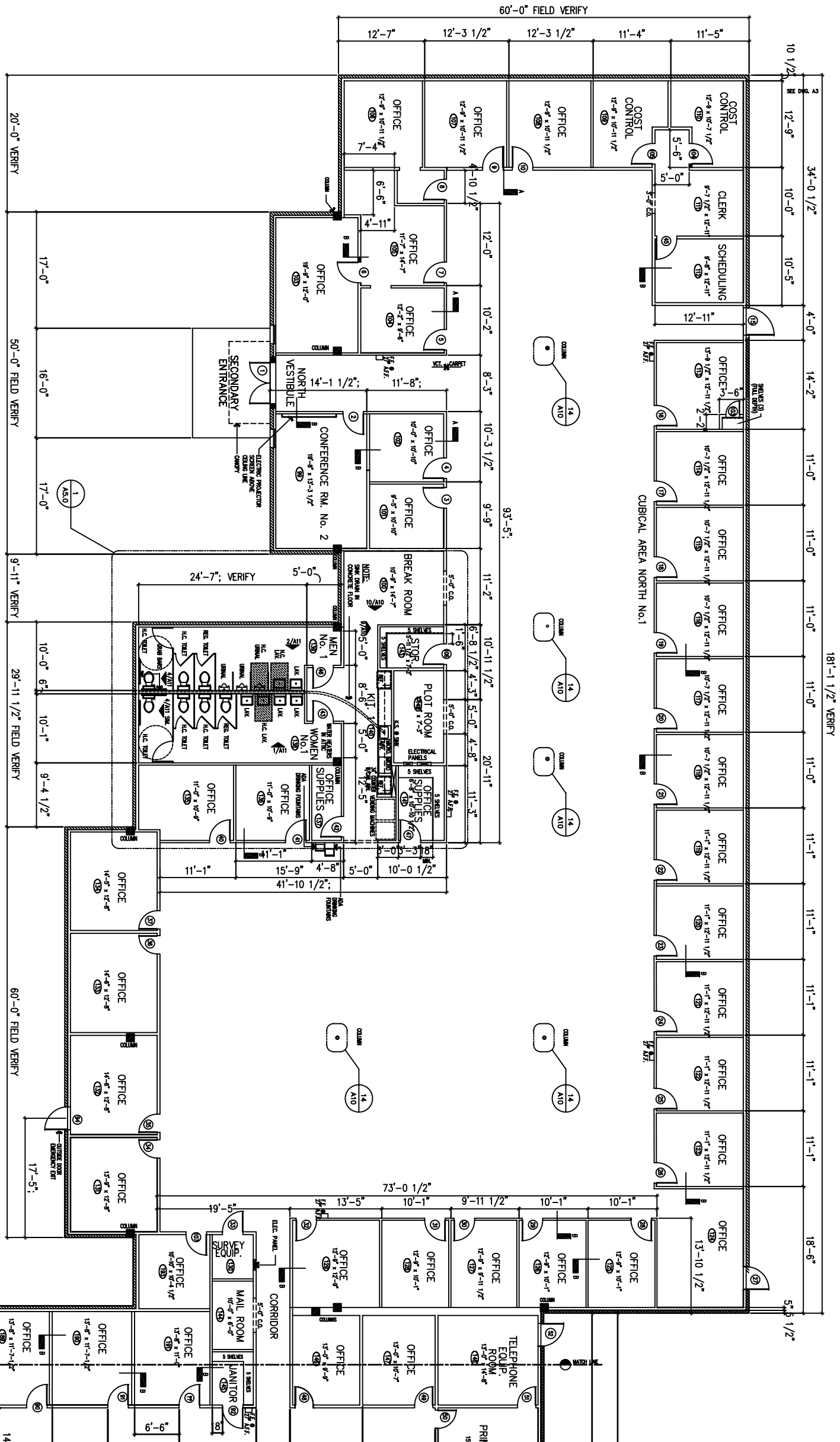
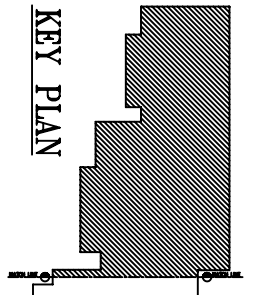


**GENERAL ADA NOTES:**

1. ALL FIRE EXTINGUISHERS TO BE MOUNTED SO THE BOTTOM IS AT A MAXIMUM HEIGHT OF 27" A.F.F.
2. ALL SINKS SHALL BE MOUNTED WITH THE COUNTER OR RIM NO HIGHER THAN 34".
3. EACH SINK SHALL BE A MAXIMUM OF 61/2" DEEP.
4. KNEE SPACES SHALL BE AT LEAST 27" HIGH, 30" WIDE AND 19" DEEP.
5. ELECTRICAL AND OPERABLE EQUIPMENT SHALL BE MOUNTED NO LESS THAN 15" A.F.F. AND NO MORE THAN 42" A.F.F.
6. SEE DETAIL 12/A11 FOR ADA SYMBOLS OF ACCESSIBILITY.



**B** SCHEMATIC PLAN FOR ENGLOBAL ENGINEERING INC.  
 1/8" = 1'-0"  
 S.F. = 35,143



REV.	DESCRIPTION	DATE
5	AS BUILT	01/30/04

**ENGLOBAL ENGINEERING INC.**  
**FLOOR PLAN**

ECKOLS AND ASSOCIATES AIA.  
 2901 TURTLE CREEK DRIVE  
 SUITE 302  
 PORT ARTHUR, TX. 77642  
 409.722.3811

RLG-DESIGNS  
 1308 REDMONT AVE.  
 AUSTIN, TX. 78757  
 (512) 452-1556

**A3**