

141 North 6th Street

Williamsburg, Brooklyn, NY

Location: Between Bedford Avenue and Berry Street


Ground Level: 4,000 SF

Frontage: 40 Feet on North 6th Street

Ceiling Height: 20 Foot Tall on Ground Floor

Rent: Upon Request

Highlights:

- Positioned in the busiest fashion corridor with strong national tenants
- 40 FT of frontage creates great exposure
- Williamsburg has a strong retail shopping, eateries, nightlife, office and residential market, and tourists
- All uses are considered
-  train station is located one block away at Bedford Ave with 9,892,516 annual ridership
- Space delivered in white-boxed condition with HVAC, ADA Bathrooms



NEIGHBORING TENANTS:



s a n d r o m a j e
PARIS PARIS

BIRKENSTOCK®

LE LABO®

EVERLANE



lululemon

WARBY
PARKER

Contact Leasing Team



Harrison Balisky
516-672-4493
hb@olmstedre.com

Brad Krosser
862-368-7271
bk@olmstedre.com

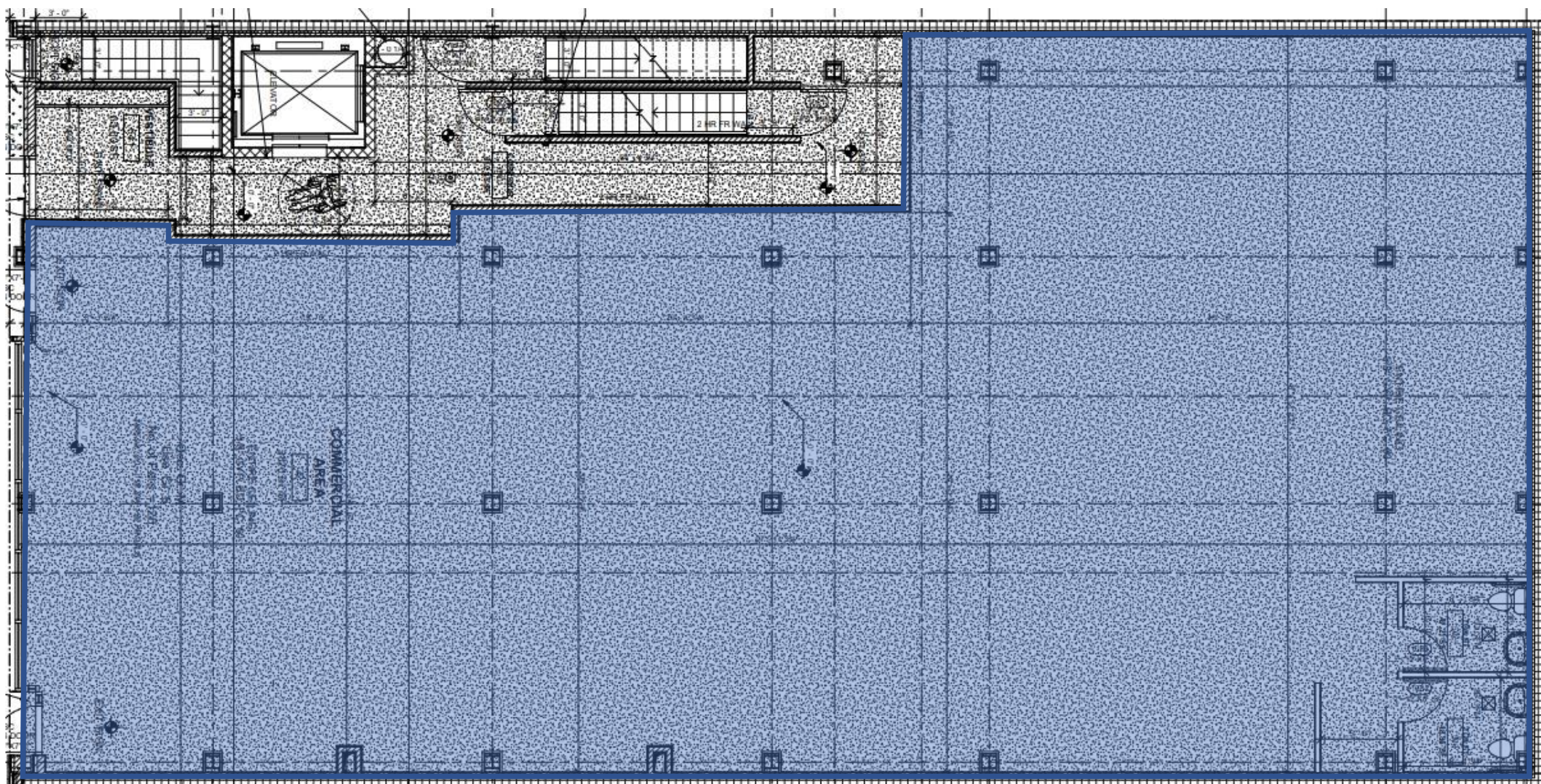


141 North 6th Street

Floor Plan

Williamsburg, Brooklyn, NY

North 6th Street



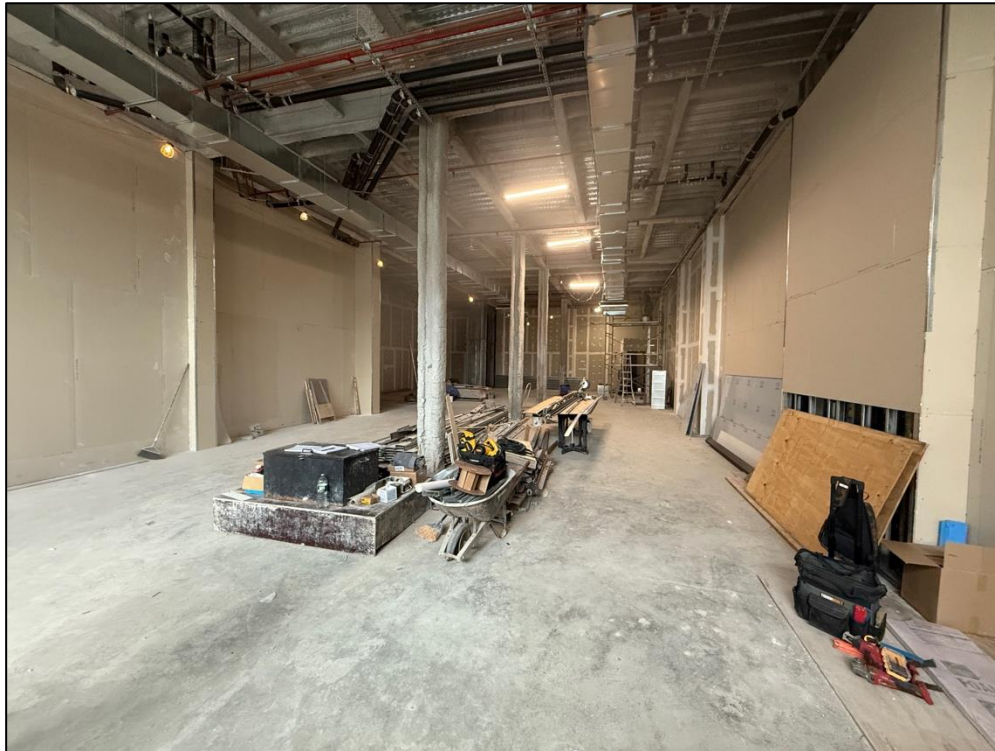
Ground Level



141 North 6th Street

Interior Photos

Williamsburg, Brooklyn, NY





141 North 6th Street

Williamsburg, Brooklyn, NY

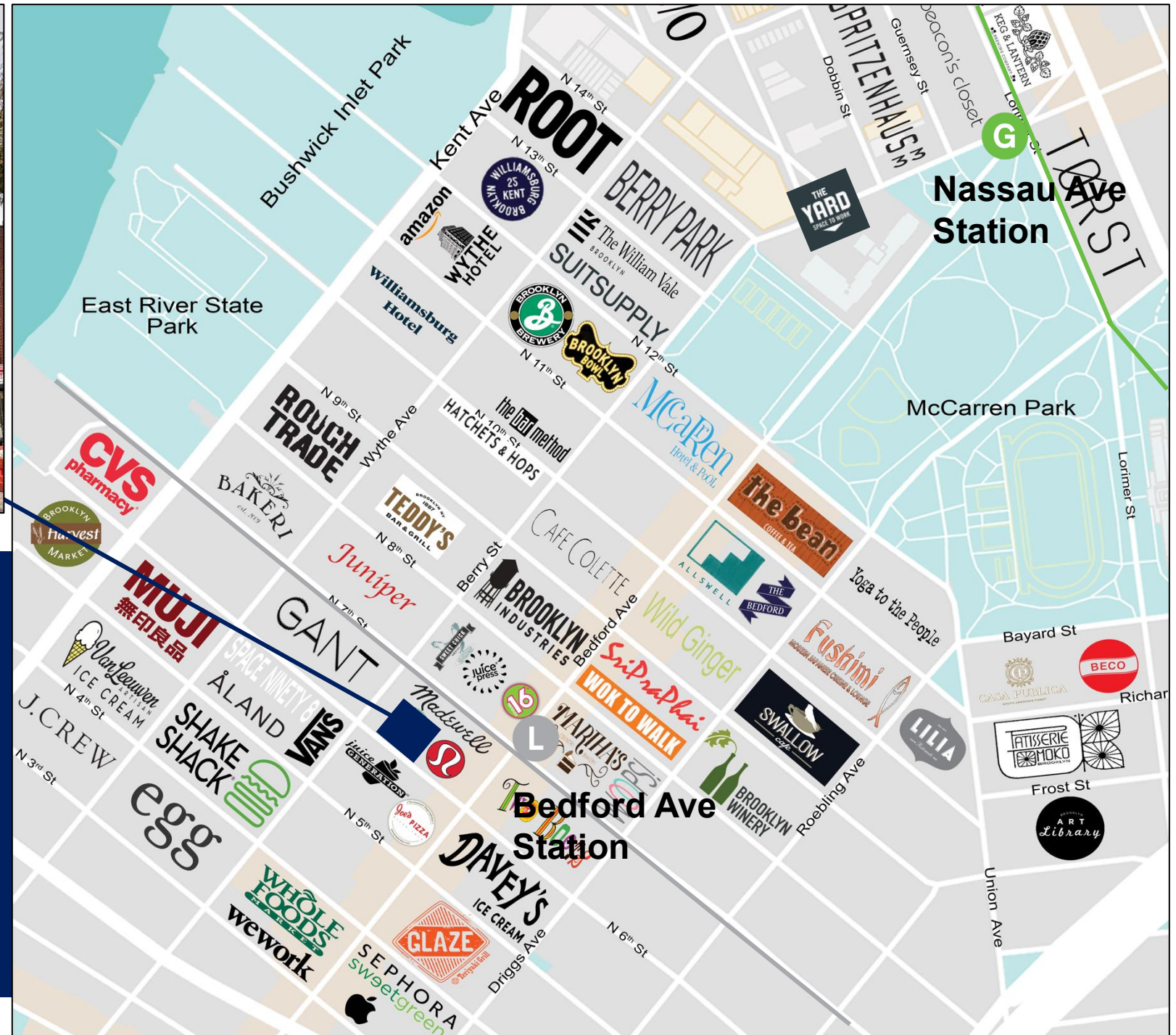
Retail Map



Annual Subway Ridership

L train is 500 FT away from **Bedford Avenue** station with 9,892,516 annual ridership

G train is 0.6 miles away from **Nassau Avenue** station with 2,880,235 annual ridership





141 North 6th Street

Williamsburg, Brooklyn, NY

Williamsburg

Demographics - North Williamsburg	
Population within 1 Mi Radius	155,726
Average Population Age	36 Years
Population Growth Since 2010	25%
Average Household Income within 1 Mi Radius	\$108,276
Total Businesses within 1 mi Radius	4,709
Total Expenditure Within 1 Mi Radius	\$1.2 Billion
L-Train Ridership at Bedford Avenue Stop	9.9 Million Riders Annual
Daily Pedestrians on Bedford Avenue	25,000
New residential units under development in Williamsburg over the next 5 years	8,000

