



DENTAL/MEDICAL SPACE AVAILABLE FOR LEASE ON AIRLINE DRIVE

2160 (B) AIRLINE DRIVE, BOSSIER CITY, LA 71111

- 1,750 sq.ft.
- \$5,000 per month includes taxes, insurance, landscaping and water
- Tenant responsible for other utilities and janitorial
- 0.67 acre site with concrete parking and drives
- Zoned B-2



For more information, contact:

Claire Childs, CCIM | 318.222.2244 | cchilds@vintagerealty.com

G. Archer Frierson III, CCIM, SIOR | 318.222.2244 | gfrierson@vintagerealty.com

ALL INFORMATION CONTAINED HEREIN IS BELIEVED TO BE ACCURATE, BUT IS NOT WARRANTED AND NO LIABILITY OF ERRORS OR OMISSIONS IS ASSURED BY EITHER THE PROPERTY OWNER OR VINTAGE REALTY COMPANY OR ITS AGENTS AND EMPLOYEES. PRICES AS STATED HEREIN AND PRODUCT AVAILABILITY IS SUBJECT TO CHANGE AND/OR SALE OR LEASE WITHOUT PRIOR NOTICE, AND ALL SIZES AND DIMENSIONS ARE SUBJECT TO CORRECTION. REV 1/2026



DENTAL/MEDICAL SPACE AVAILABLE FOR LEASE ON AIRLINE DRIVE

2160 (B) AIRLINE DRIVE
BOSSIER CITY, LA 71111



For information, please contact:

Claire Childs, CCIM | 318.222.2244 | cchilds@vintagerealty.com

G. Archer Frierson III, CCIM, SIOR | 318.222.2244 | gfrierson@vintagerealty.com

ALL INFORMATION CONTAINED HEREIN IS BELIEVED TO BE ACCURATE, BUT IS NOT WARRANTED AND NO LIABILITY OF ERRORS OR OMISSIONS IS ASSURED BY EITHER THE PROPERTY OWNER OR VINTAGE REALTY COMPANY OR ITS AGENTS AND EMPLOYEES. PRICES AS STATED HEREIN AND PRODUCT AVAILABILITY IS SUBJECT TO CHANGE AND/OR SALE OR LEASE WITHOUT PRIOR NOTICE, AND ALL SIZES AND DIMENSIONS ARE SUBJECT TO CORRECTION. 1/2026

DENTAL/MEDICAL SPACE AVAILABLE FOR LEASE ON AIRLINE DRIVE

2160 (B) AIRLINE DRIVE
BOSSIER CITY, LA 71111



For information, please contact:

Claire Childs, CCIM | 318.222.2244 | cchilds@vintagerealty.com

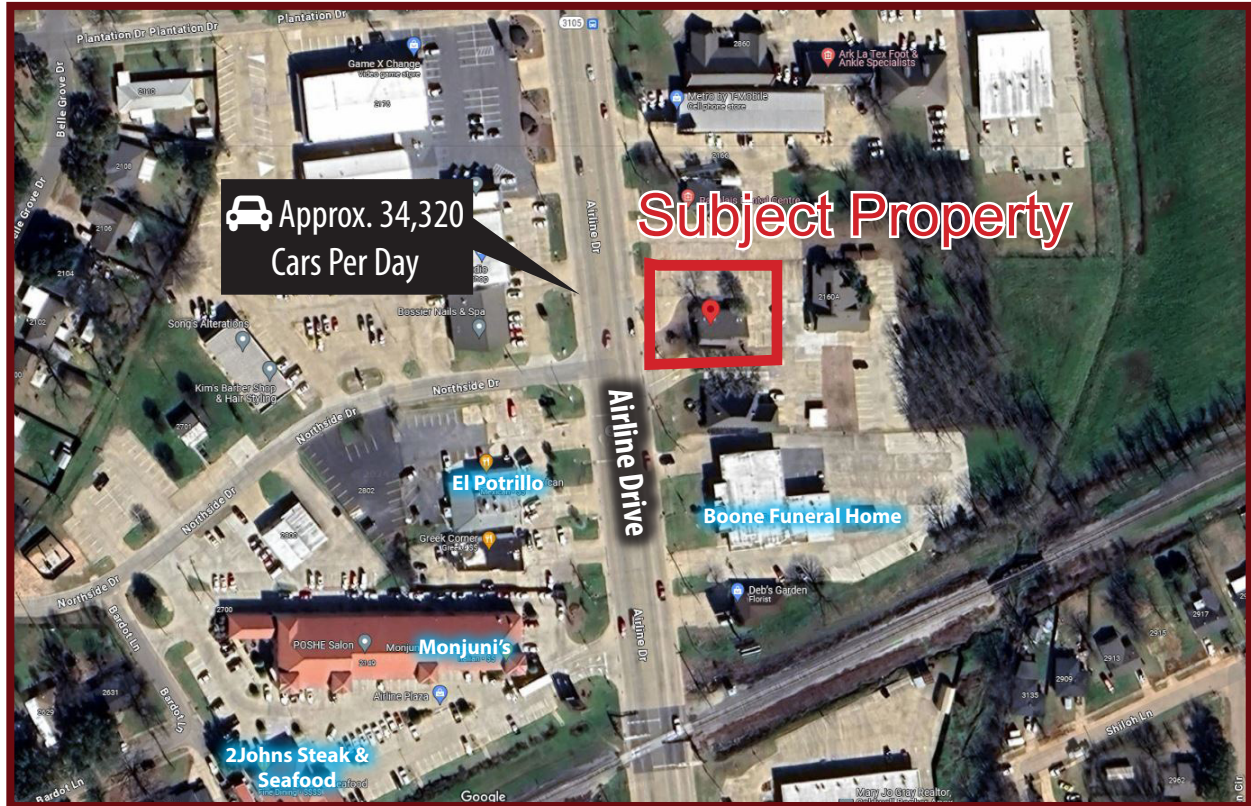
G. Archer Frierson III, CCIM, SIOR | 318.222.2244 | gfrierson@vintagerealty.com

ALL INFORMATION CONTAINED HEREIN IS BELIEVED TO BE ACCURATE, BUT IS NOT WARRANTED AND NO LIABILITY OF ERRORS OR OMISSIONS IS ASSURED BY EITHER THE PROPERTY OWNER OR VINTAGE REALTY COMPANY OR ITS AGENTS AND EMPLOYEES. PRICES AS STATED HEREIN AND PRODUCT AVAILABILITY IS SUBJECT TO CHANGE AND/OR SALE OR LEASE WITHOUT PRIOR NOTICE, AND ALL SIZES AND DIMENSIONS ARE SUBJECT TO CORRECTION. 1/2026

DENTAL/MEDICAL SPACE AVAILABLE FOR LEASE ON AIRLINE DRIVE

2160 (B) AIRLINE DRIVE
BOSSIER CITY, LA 71111

NEIGHBORHOOD AERIAL



| 2025 DEMOGRAPHICS | | | |
|-------------------|----------------------|---------------|------------|
| Radius | Number of Households | Avg HH Income | Population |
| 1 mile | 3,496 | \$61,678 | 8,573 |
| 3 mile | 14,977 | \$69,430 | 35,567 |
| 5 mile | 38,310 | \$79,698 | 89,207 |



For information, please contact:

Claire Childs, CCIM | 318.222.2244 | cchilds@vintagerealty.com

G. Archer Frierson III, CCIM, SIOR | 318.222.2244 | gfrierson@vintagerealty.com

ALL INFORMATION CONTAINED HEREIN IS BELIEVED TO BE ACCURATE, BUT IS NOT WARRANTED AND NO LIABILITY OF ERRORS OR OMISSIONS IS ASSURED BY EITHER THE PROPERTY OWNER OR VINTAGE REALTY COMPANY OR ITS AGENTS AND EMPLOYEES. PRICES AS STATED HEREIN AND PRODUCT AVAILABILITY IS SUBJECT TO CHANGE AND/OR SALE OR LEASE WITHOUT PRIOR NOTICE, AND ALL SIZES AND DIMENSIONS ARE SUBJECT TO CORRECTION. 1/2026