

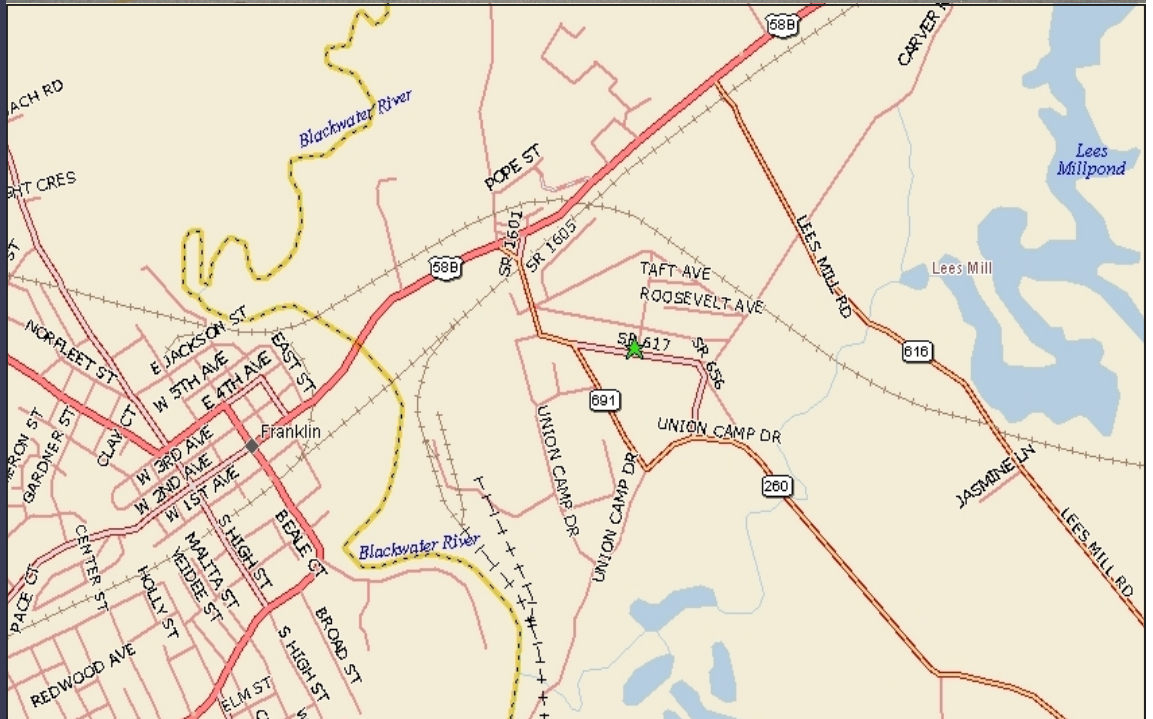
# For Lease

- Space available:  
1,200 SF, 2,000 SF,  
3,200 SF; 3,200 SF
- Shopping center is  
198,000 SF
- Tenants include  
Super Wal-Mart,  
Cato, Dollar Tree,  
Shoe Show, Hibbett  
Sporting Goods

## Franklin Commons Shopping Center

112 COUNCIL ROAD

FRANKLIN, VIRGINIA



### 2016 Demographics

#### Estimated Population

1 mile radius: 742  
3 mile radius: 9,748  
5 mile radius: 12,571

#### Est. Household Income

1 mile radius: \$ 40,818  
3 mile radius: \$ 50,502  
5 mile radius: \$ 52,961

#### Estimated Median Age

1 mile radius: 37.6  
3 mile radius: 39.7  
5 mile radius: 40.9

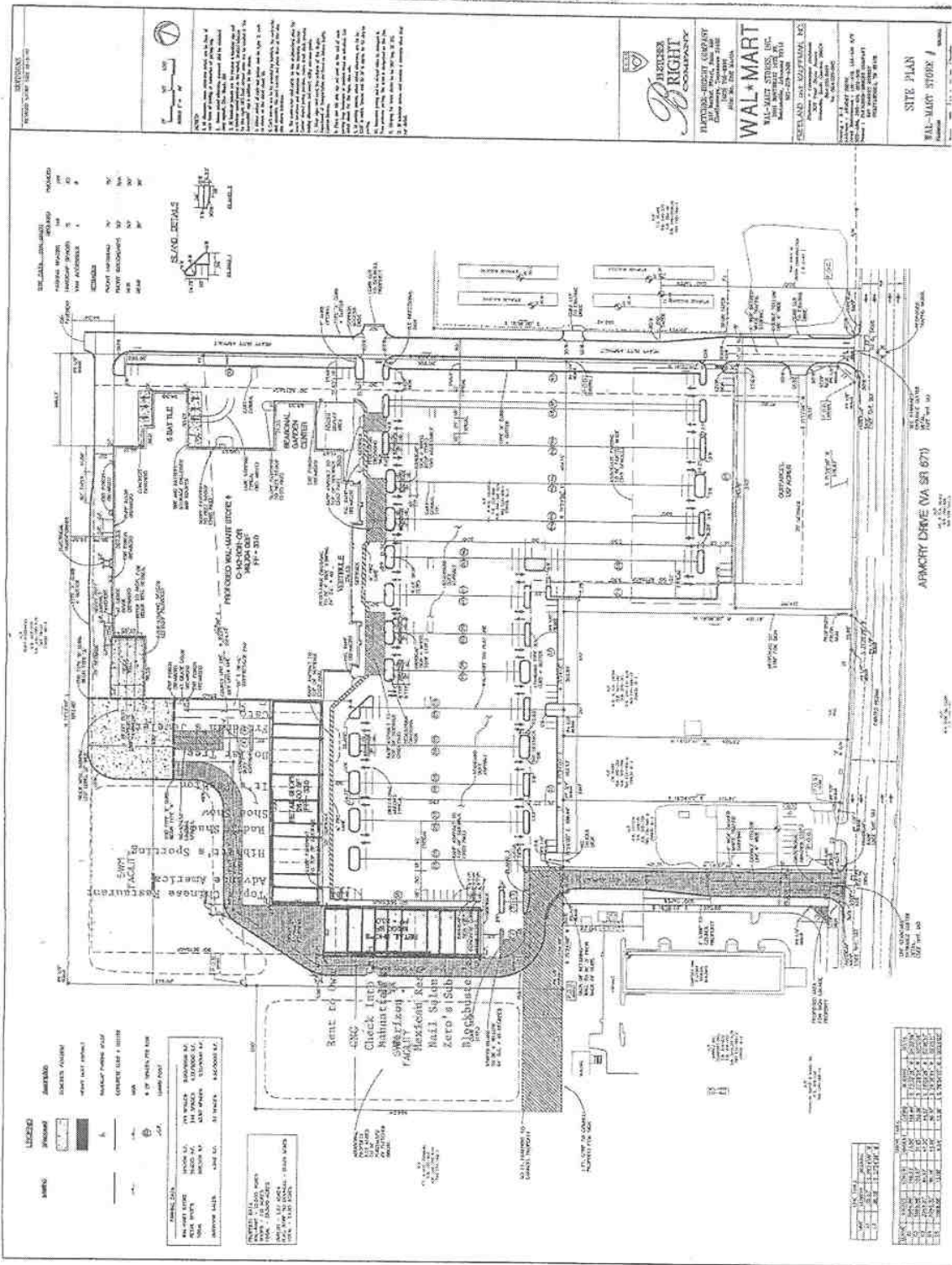
For more information and personal showing contact:

### **CHARLIE WARFIELD**

Brookside Properties  
2002 Richard Jones Rd, Ste C-200  
Nashville, TN 37215  
Mobile 615.330.9689  
Office 615.467.3400  
cwarfield@brooksideproperties.com  
Fax 615.988-1547

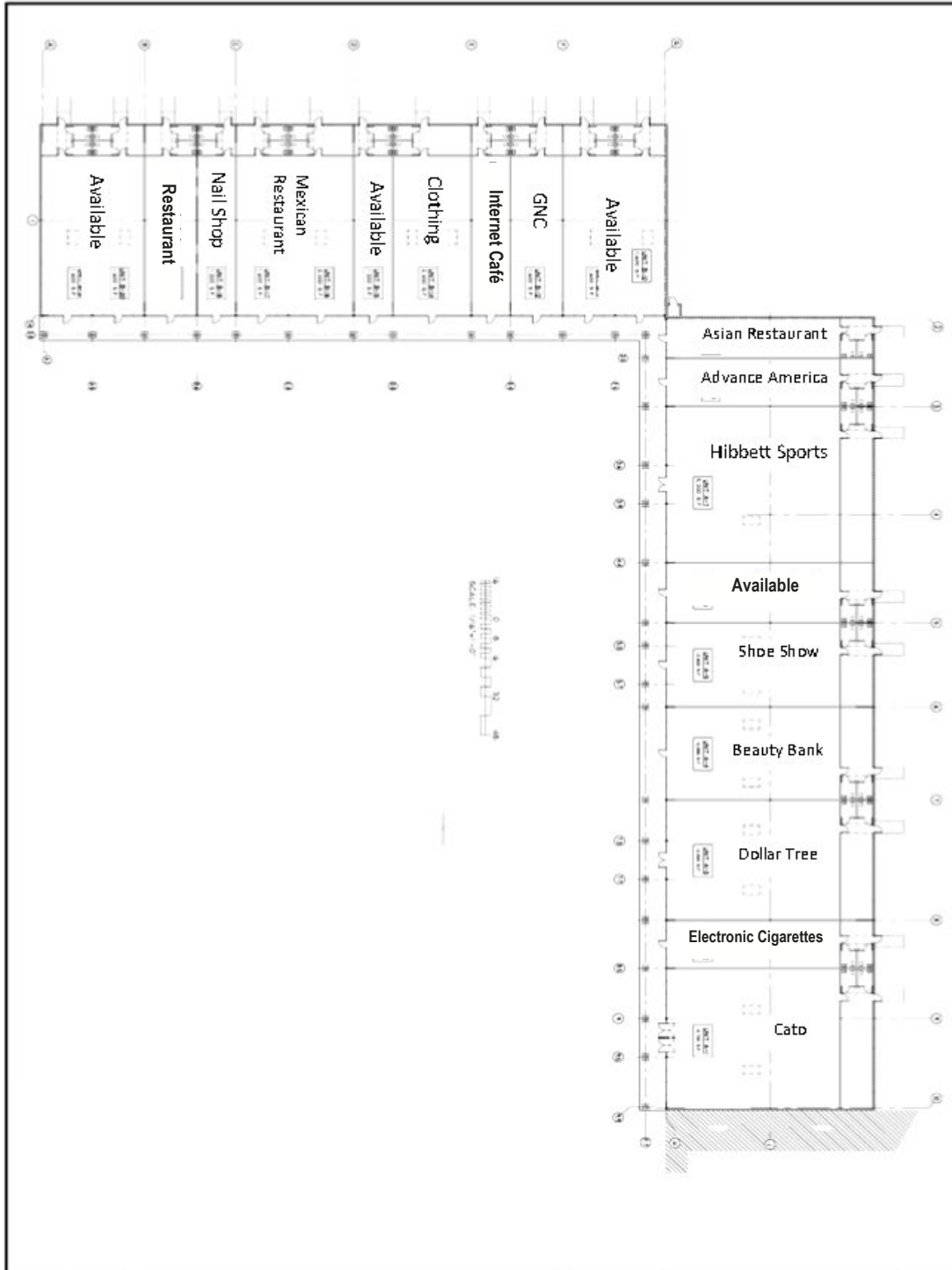


# Franklin Commons Shopping Center



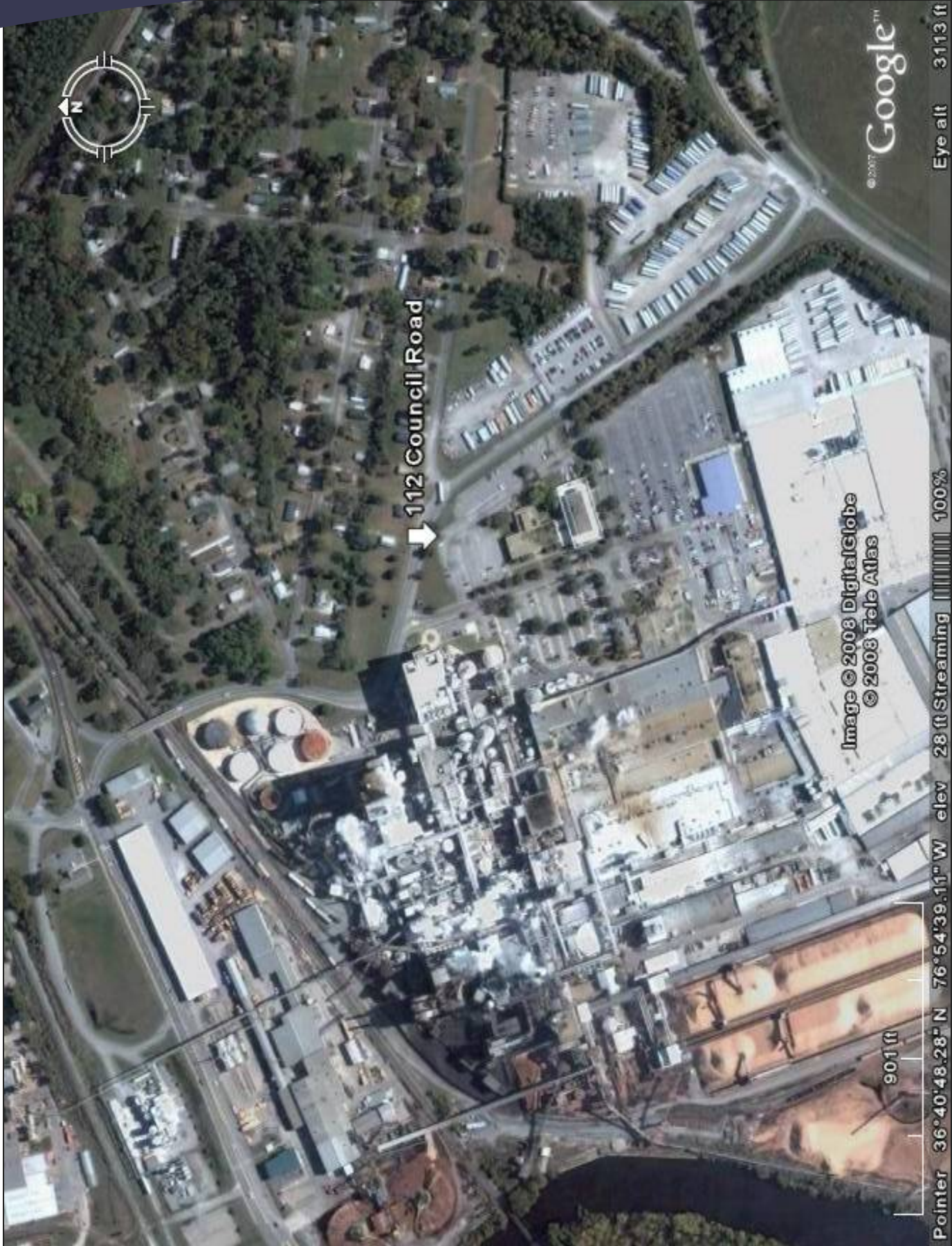
Franklin Commons, Franklin, Virginia

# Franklin Commons Shopping Center



	<p><b>WAL-MART SHOPPING CENTER</b>          ARMORY DRIVE (VA SR 67D)      FRANKLIN, VIRGINIA</p>	<p><b>HARRAMORE ASSOCIATES, INC.</b>          A.S.A.          Architects &amp; Planners</p>	
--	--	---	--

# Franklin Commons Shopping Center



**Franklin Commons Shopping Center, Franklin, Virginia**  
**Contact Information: Charlie Warfield at Brookside Properties, Inc., 2002 Richard Jones Road, Ste 200A, Nashville, TN 37215**  
**615-467-3400 (office); 615-330-9689 (mobile); 615-312-1185 (fax); cwarfield@brooksideproperties.com**