

101MONTGOMERY



Jones Lang LaSalle Brokerage, Inc.
Real Estate License #: 01856260



Calfox, Inc.
real estate investment company

About 101 Montgomery



Built and owned by the Cahill Family



Class A Building



294,146 RSF



Located in the heart of
San Francisco's Financial District

Building Features



Stunning bay views



Centrally located 1 block from
Montgomery St BART/Muni station



Certified LEED gold



Energy star certified



On-site parking



Two EV charging stations



Secured bike storage



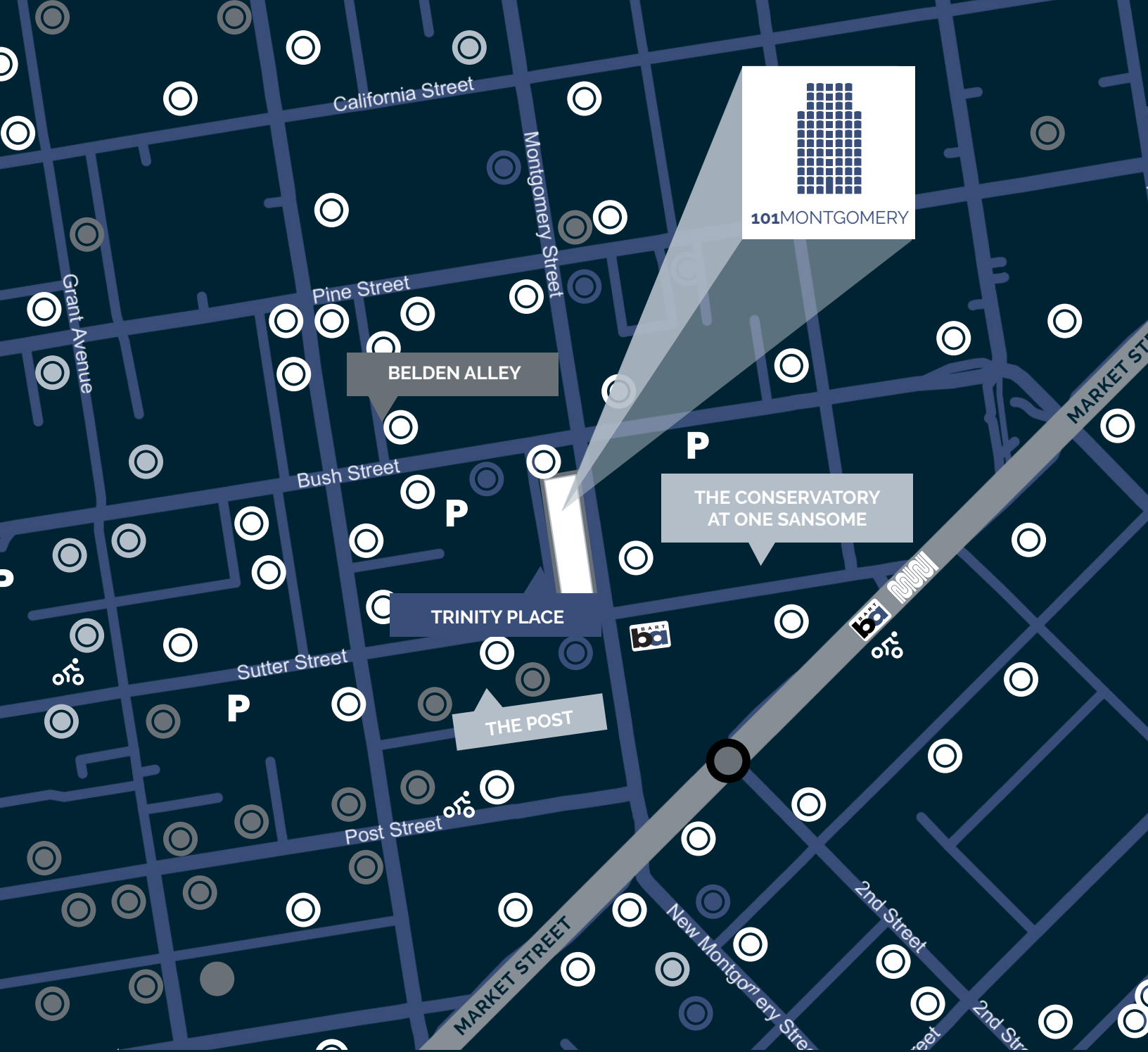
Security 24/7



On-site property management



Built, owned
& operated
by the Cahill
family, **shaping
San Francisco
since 1911.**



Nearby Amenities

- Restaurants/Bars
- Retail
- Hotels
- Fitness
- P** Parking
- Bike Share

LOCAL HIGHLIGHTS

- Belden Alley
- The Conservatory at One Sansome
- Trinity Place
- The Post - Formerly Crocker Galleria

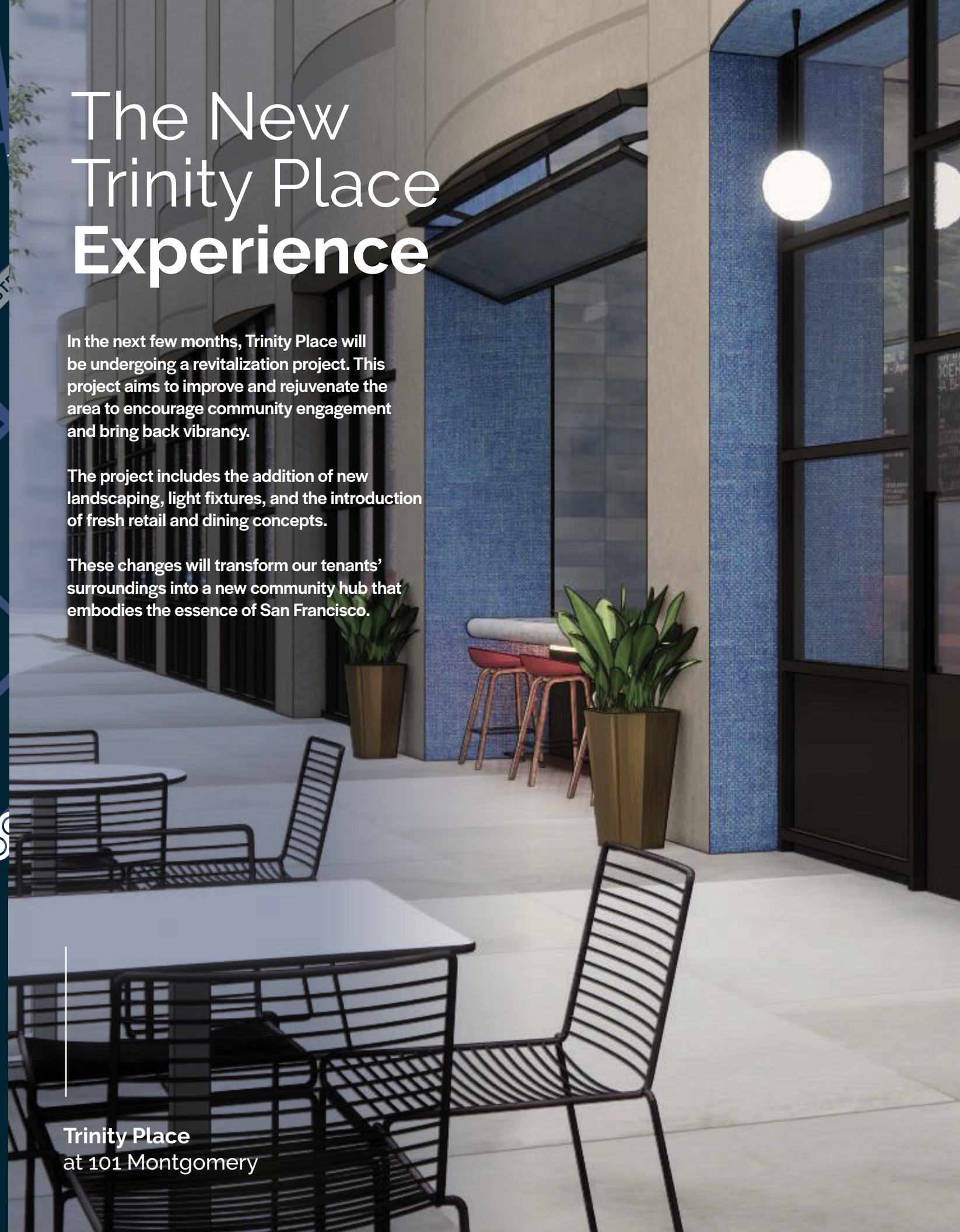
The New Trinity Place Experience

In the next few months, Trinity Place will be undergoing a revitalization project. This project aims to improve and rejuvenate the area to encourage community engagement and bring back vibrancy.

The project includes the addition of new landscaping, light fixtures, and the introduction of fresh retail and dining concepts.

These changes will transform our tenants' surroundings into a new community hub that embodies the essence of San Francisco.

Trinity Place
at 101 Montgomery



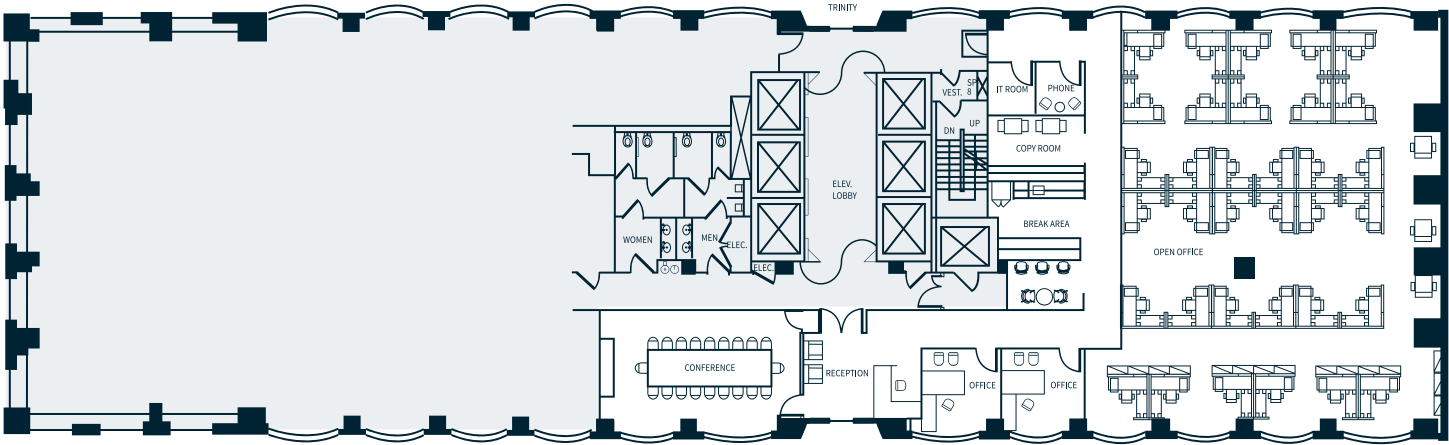
Convenience
Only Steps Away



Coffee Bar

La Fromagerie

Chase Bank



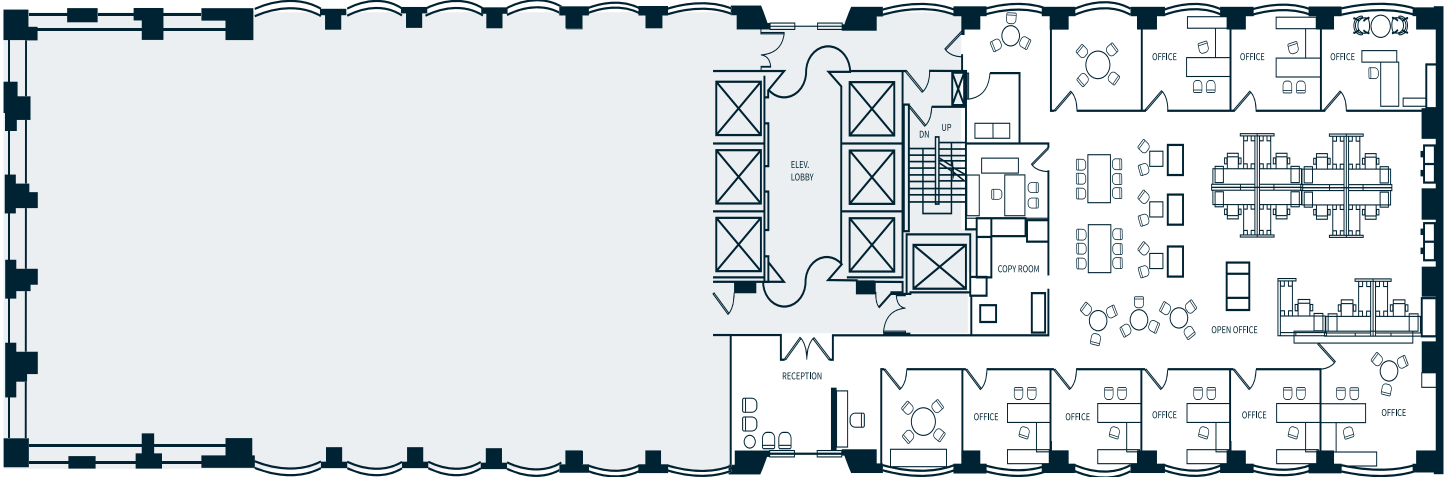
Suite 500

6,051 RSF

AVAILABLE NOW

- * Can be combined with adjacent suite to create a 12,172 RSF full floor opportunity
- Highly creative suite with exposed ceilings and polished concrete
- Large open space
- Two private offices
- One boardroom
- Kitchen
- Phone room

 TAKE THE VIRTUAL TOUR



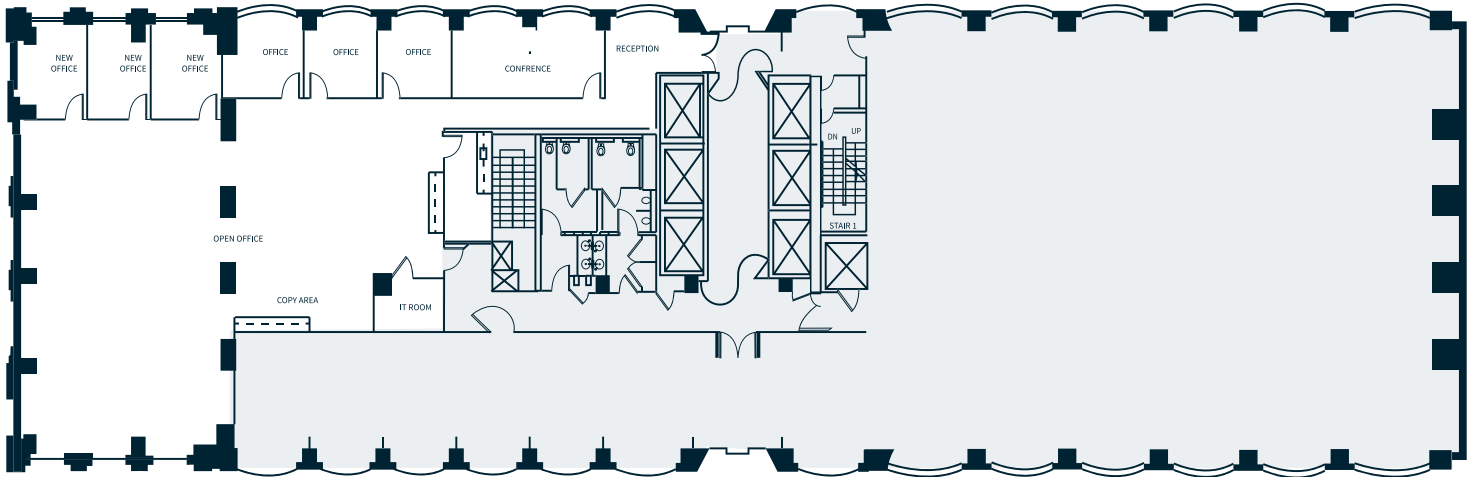
Suite 600

5,452 RSF

AVAILABLE NOW

- Open office
- Reception
- Kitchenette / Copy room
- 2 conference rooms
- 9 private offices

 TAKE THE VIRTUAL TOUR



Suite 750

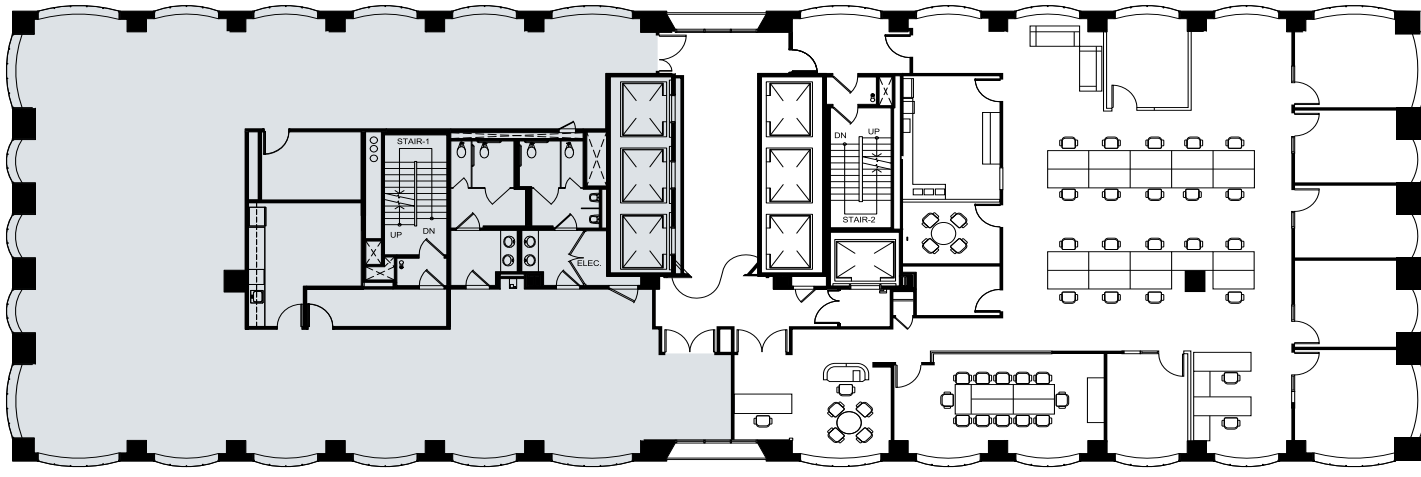
5,324 RSF

AVAILABLE NOW

- Open space
- 6 private offices
- 1 large conference room
- Reception
- IT room
- Kitchen



TAKE THE VIRTUAL TOUR



Suite 1900

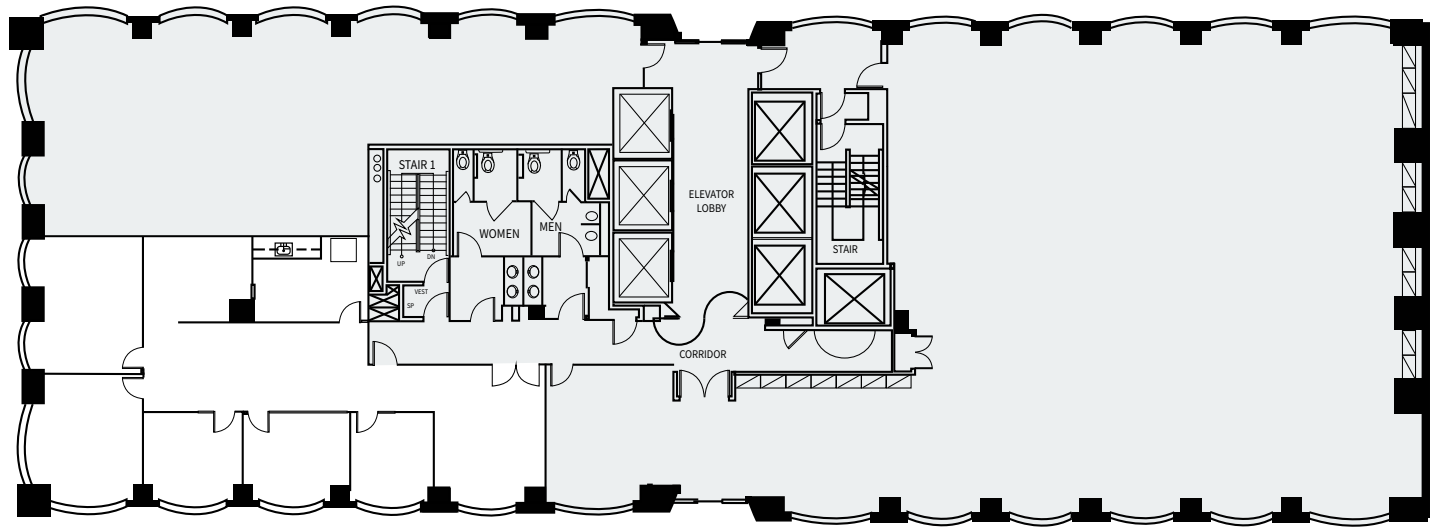
5,334 RSF

AVAILABLE 2.1.2026

- 8 meeting rooms
- 1 conference room
- Open space for workstations
- Kitchen



Northern and Southern facing bay views
including protected views of Union
Square

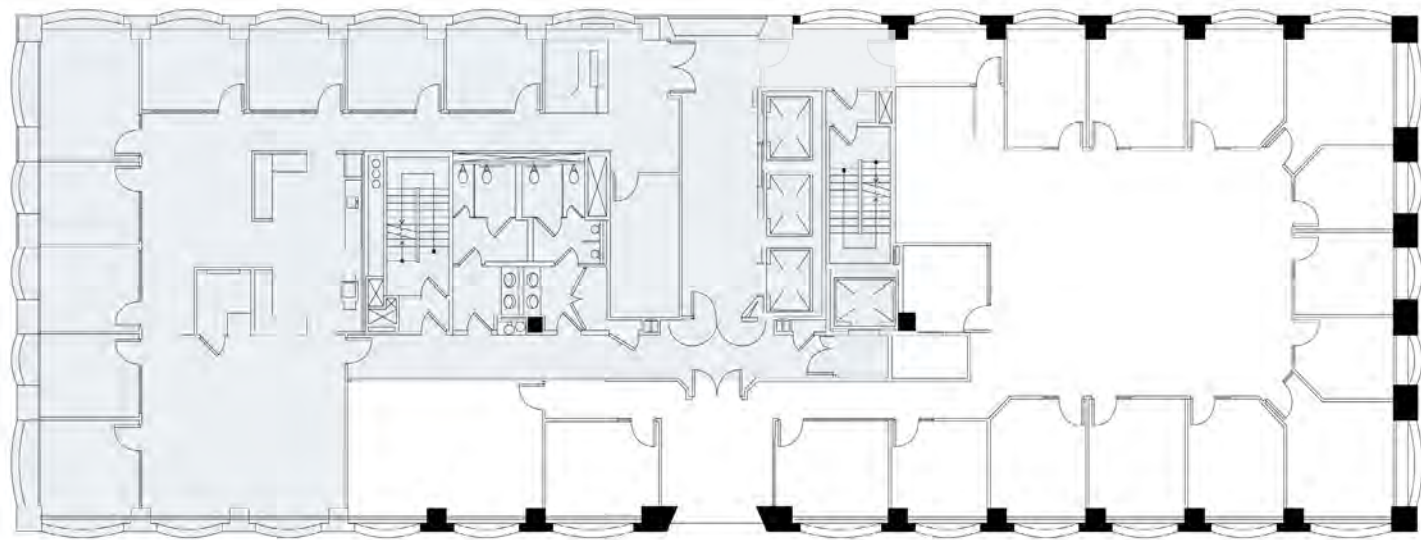


Suite 1200

2,339 RSF

AVAILABLE NOW

- 2 meeting rooms
- 3 private offices
- Kitchenette



Suite 2100

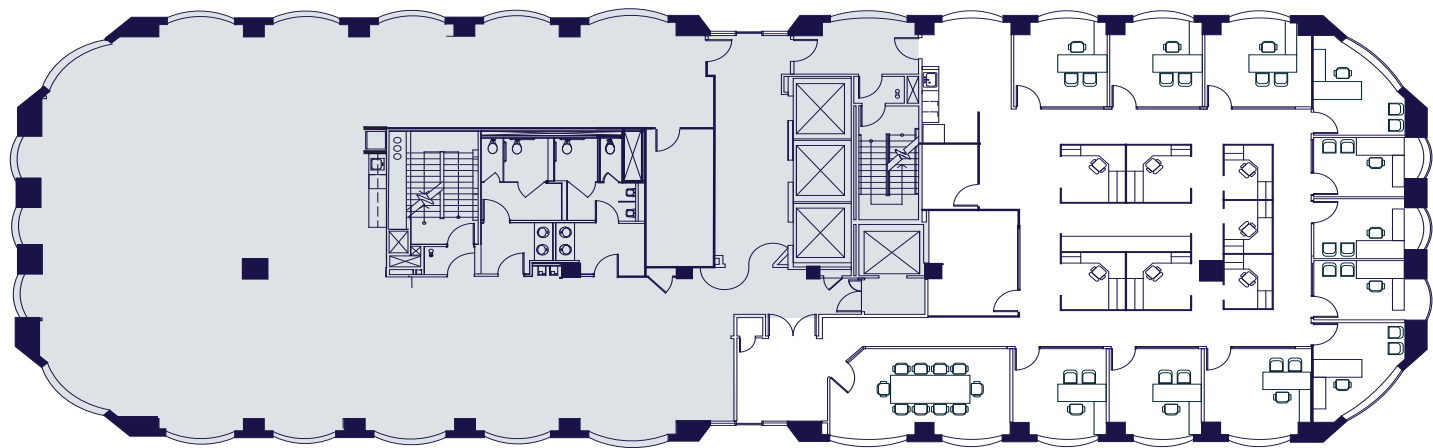
6,355 RSF

AVAILABLE 12.1.25

- 14 private offices
- 1 large conference room
- Open space
- 1 meeting room
- Kitchen/break room



Northern and Southern facing views,
including protected views of Union
Square



Suite 2600

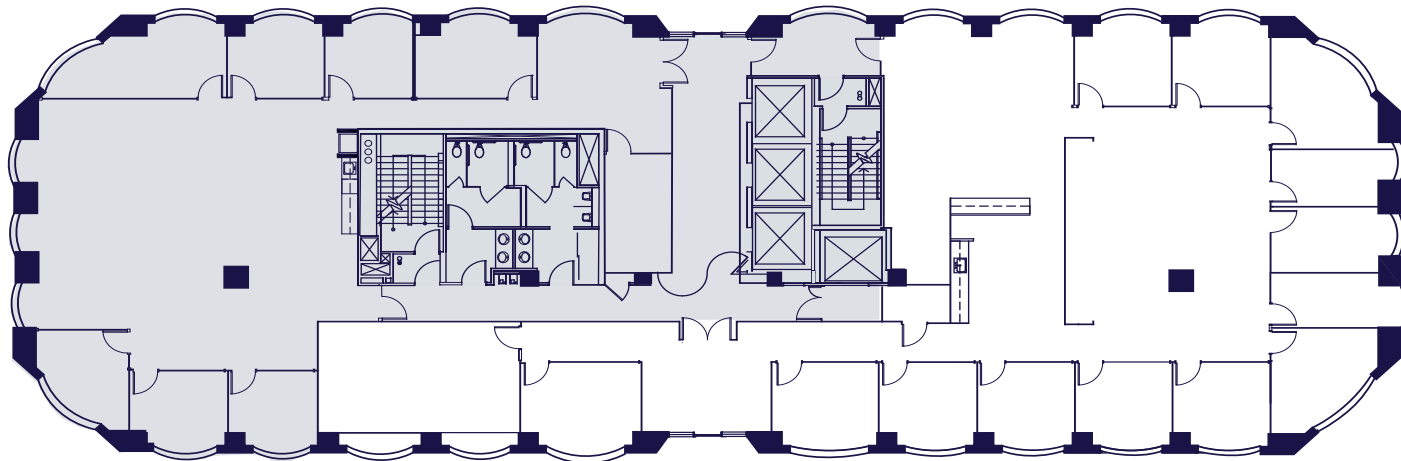
5,174 RSF

AVAILABLE IN 30 DAYS



Northern and Southern facing bay views
including protected views of Union
Square

- 11 Private Offices
- 1 Conference Room
- Kitchenette / Lounge Area
- 7 Workstations



Suite 2800

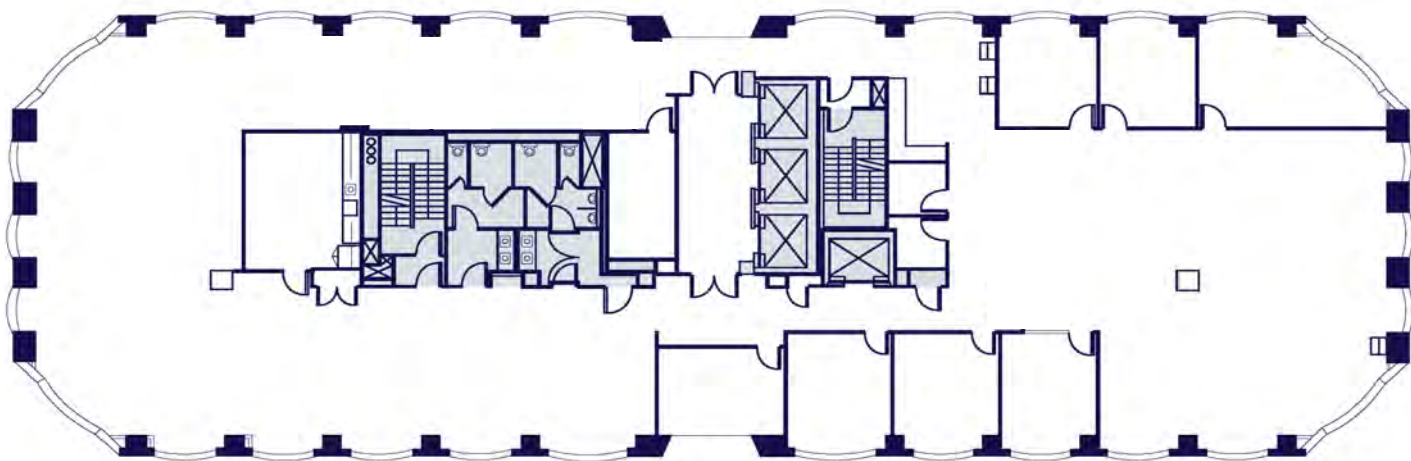
6,223 RSF

AVAILABLE NOW



Northern facing bay views

- 11 private offices
- 2 meeting rooms
- 1 conference room
- Kitchen/break area
- Server room



Suite 2700

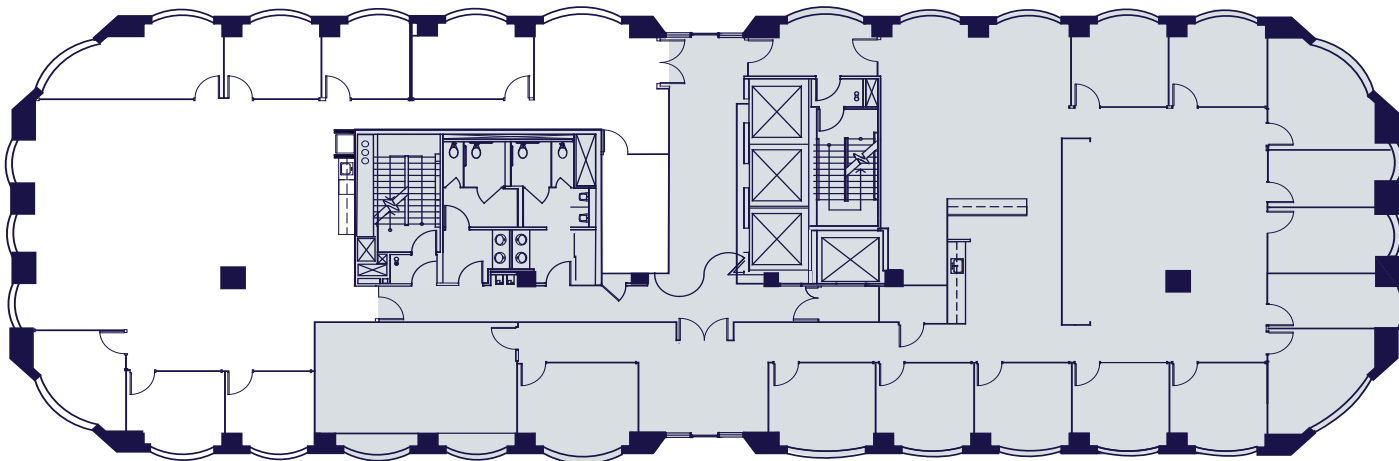
10,170 RSF

AVAILABLE NOW



Northern and Southern facing bay views
including protected views of Union
Square

- Full floor
- 5 private offices
- 2 conference rooms
- Kitchen/break area
- 2 phone rooms
- IT/storage closet



Suite 2850

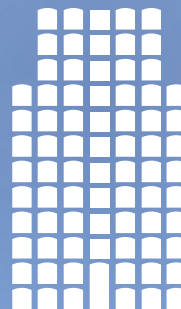
3,947 RSF

AVAILABLE NOW



Southern facing bay views including
protected views of Union Square

- Open space
- 6 private offices
- 1 conference room
- Kitchen/break area
- Reception area



101MONTGOMERY

Tom Doupe
Senior Vice President
+1 415 395 4933
tom.doupe@jll.com
RE License #01921218

Teva Myatt
Associate
+1 415 395 7290
teva.myatt@jll.com
RE License #02198058



Calfox, Inc.
real estate investment company



JLL

Although information has been obtained from sources deemed reliable, JLL does not make any guarantees, warranties or representations, express or implied, as to the completeness or accuracy as to the information contained herein. Any projections, opinions, assumptions or estimates used are for example only. There may be differences between projected and actual results, and those differences may be material. JLL does not accept any liability for any loss or damage suffered by any party resulting from reliance on this information. If the recipient of this information has signed a confidentiality agreement with JLL regarding this matter, this information is subject to the terms of that agreement.
©2025 Jones Lang LaSalle Brokerage, Inc. All rights reserved.