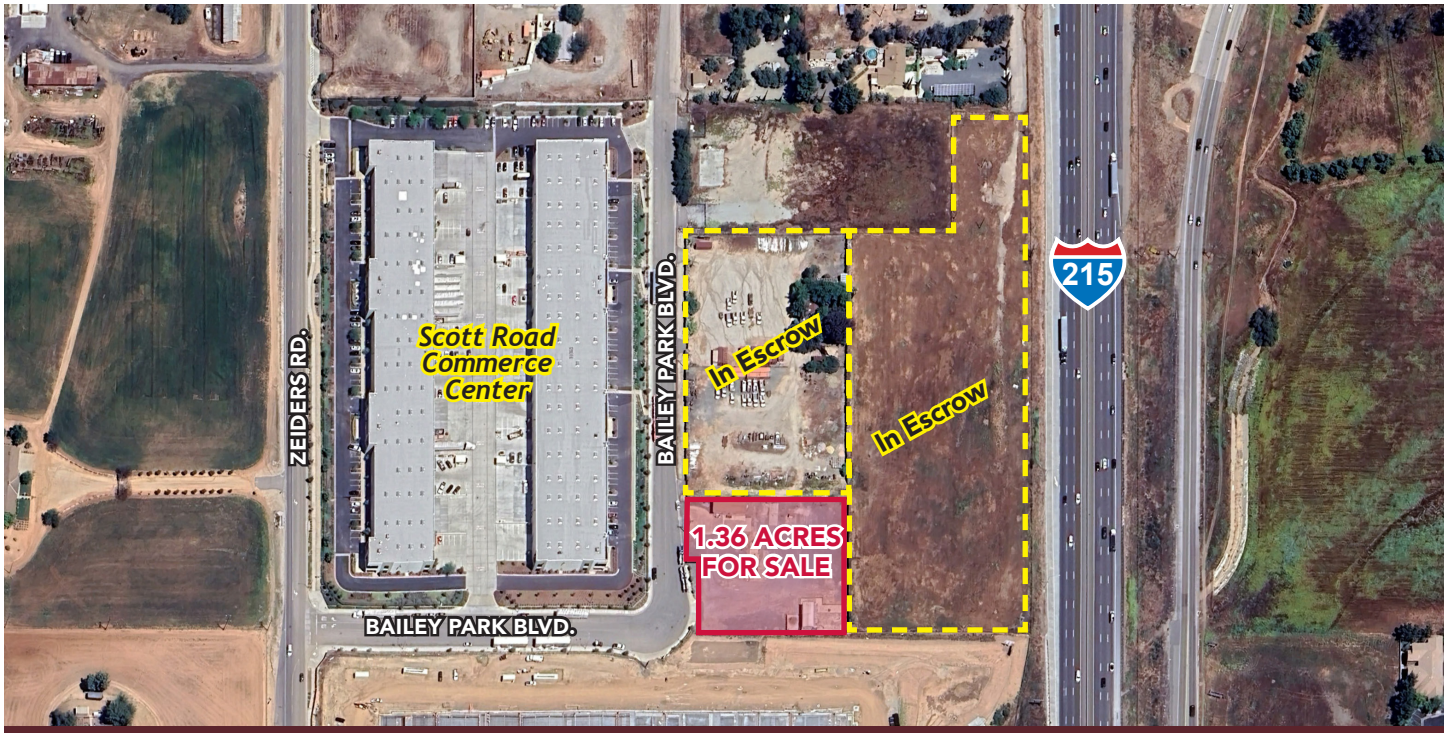


FOR SALE

±1.36 ACRES COMMERCIAL PROPERTY

33490 BAILEY PARK BLVD. | MENIFEE, CA



PROPERTY HIGHLIGHTS:

- 1.36 Improved Acres For Sale (Fenced)
- I-215 Freeway Visibility
- Easy access from I-215 offramp at Scott Road
- Close Proximity to Major Commercial & Retail Services
- Excellent Building Development Opportunity
- EDC-SG Zoning in - City of Menifee (City Envisions Business Park & Retail Uses)
[Click here for City Exhibit \(LU-b2a\)](#)

SALES PRICE: \$900,000



Gary Washburn
951.600.8634 ext. 704
gary.washburn@svn.com
DRE #00705913



Gordon Mize
951.445.4504
gmize@leetemecula.com
DRE #01275376

No warranty or representation has been made to the accuracy of the foregoing information. Terms of sale or lease and availability are subject to change or withdrawal without notice. Lee & Associates Commercial Real Estate Services, Inc. - Riverside, 25240 Hancock Avenue, Suite 100 - Murrieta, CA 92562 Corporate ID# 01048055

FOR SALE

±1.36 ACRES COMMERCIAL PROPERTY

33490 BAILEY PARK BLVD. | MENIFEE, CA



Gary Washburn
951.600.8634 ext. 704
gary.washburn@svn.com
DRE #00705913



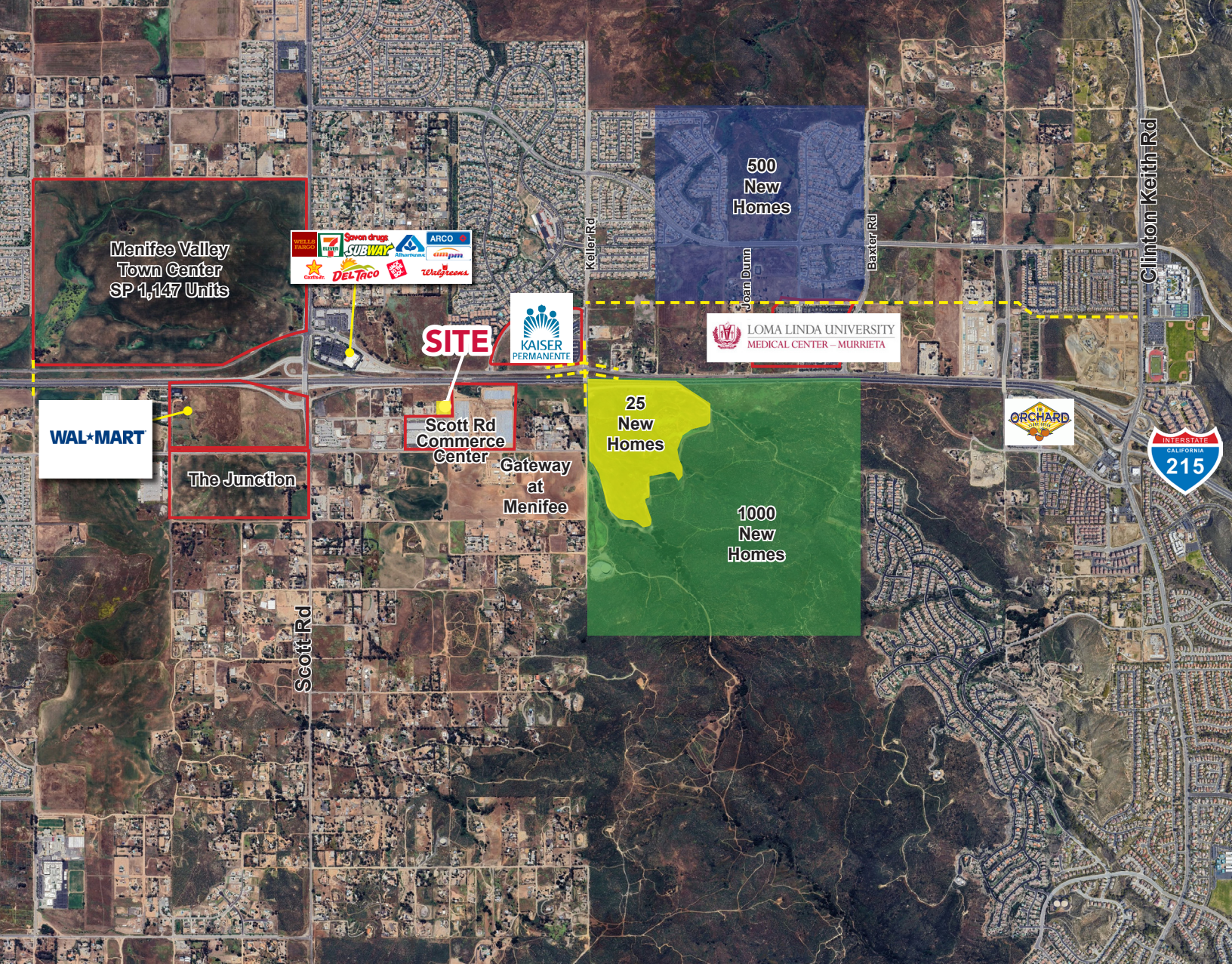
Gordon Mize
951.445.4504
gmize@leetemecula.com
DRE #01275376

No warranty or representation has been made to the accuracy of the foregoing information. Terms of sale or lease and availability are subject to change or withdrawal without notice. Lee & Associates Commercial Real Estate Services, Inc. - Riverside, 25240 Hancock Avenue, Suite 100 - Murrieta, CA 92562 Corporate ID# 01048055

FOR SALE

±1.36 ACRES COMMERCIAL PROPERTY

33490 BAILEY PARK BLVD. | MENIFEE, CA



Gary Washburn
951.600.8634 ext. 704
gary.washburn@svn.com
DRE #00705913



Gordon Mize
951.445.4504
gmize@leetemecula.com
DRE #01275376

No warranty or representation has been made to the accuracy of the foregoing information. Terms of sale or lease and availability are subject to change or withdrawal without notice. Lee & Associates Commercial Real Estate Services, Inc. - Riverside, 25240 Hancock Avenue, Suite 100 - Murrieta, CA 92562 Corporate ID# 01048055