



# Westchase Office Bldgs for Sale or Lease: Up to 335,300 RSF

**HOUSTON, TEXAS**

Wesley House

+1 832 703-9930  
wesley.house@jll.com

Cody Little

+1 214 536-6331  
cody.little@jll.com

Kendall Wallace

+1 713 823-3637  
kendall.wallace@jll.com

Paul Penland

+1 713 376-5250  
paul.penland@jll.com





## 7909 PARKWOOD CIRCLE

~190,000 RSF / 7 Floors



## 9720 BEECHNUT

~70,400 RSF / 4 Floors



## 9724 BEECHNUT

~74,900 RSF / 4 Floors

# For Sublease

<b>Premises:</b>	3,000 RSF - 335,300 RSF
<b>Divisible:</b>	Small suites available or entire building
<b>Expiration:</b>	11/30/37 (negotiable)
<b>Quoted Rate:</b>	\$12.00/RSF Gross
<b>Furniture:</b>	Available
<b>Parking:</b>	4.0-5.0/1000 RSF Garage & surface

# For Sale

Call for pricing

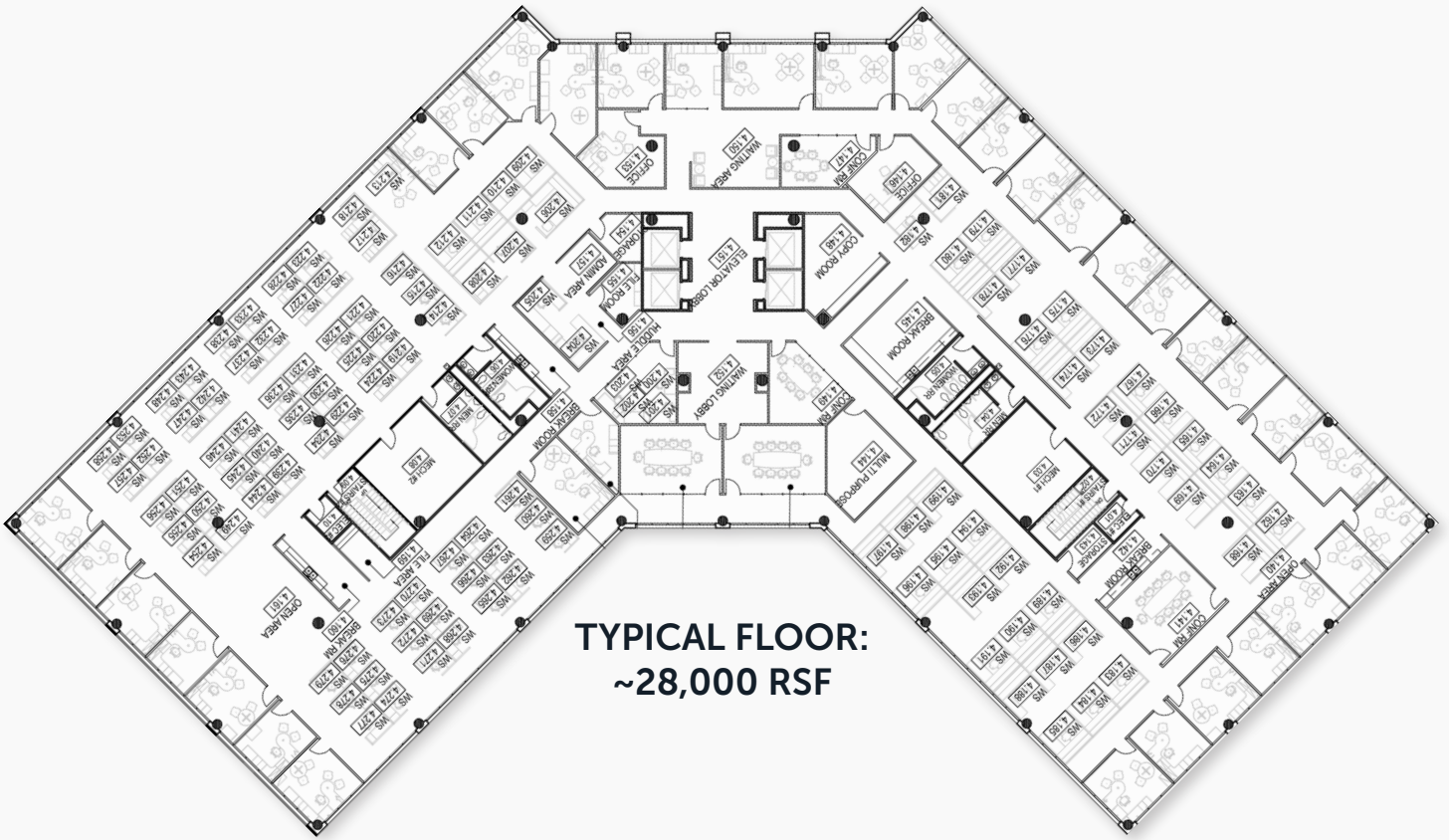
# Features:

- 3-building, gated complex
- High-end executive floor available
- 24/7 security
- Full-service cafe
- Conferencing & training facilities

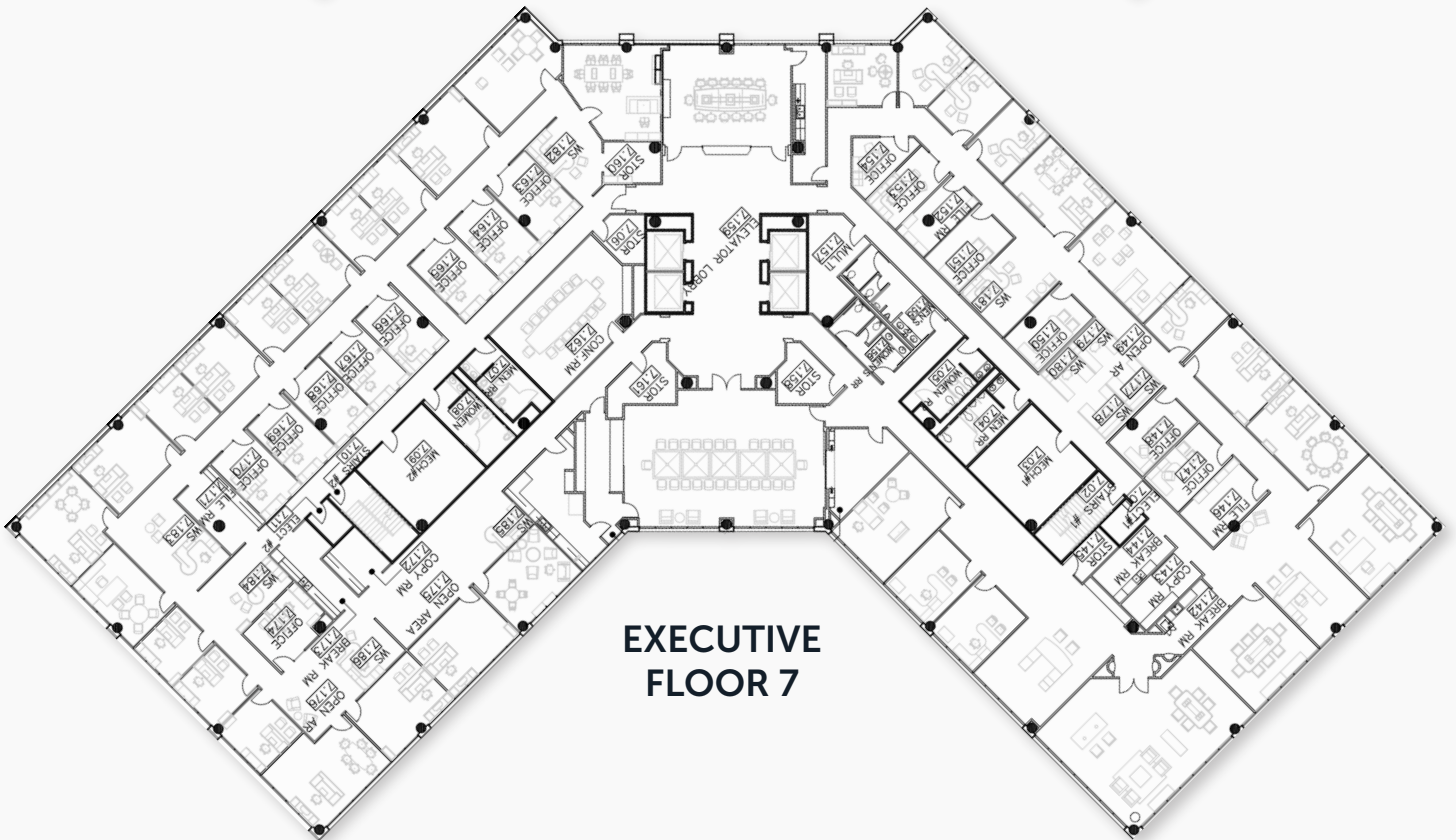




# 7909 PARKWOOD CIRCLE

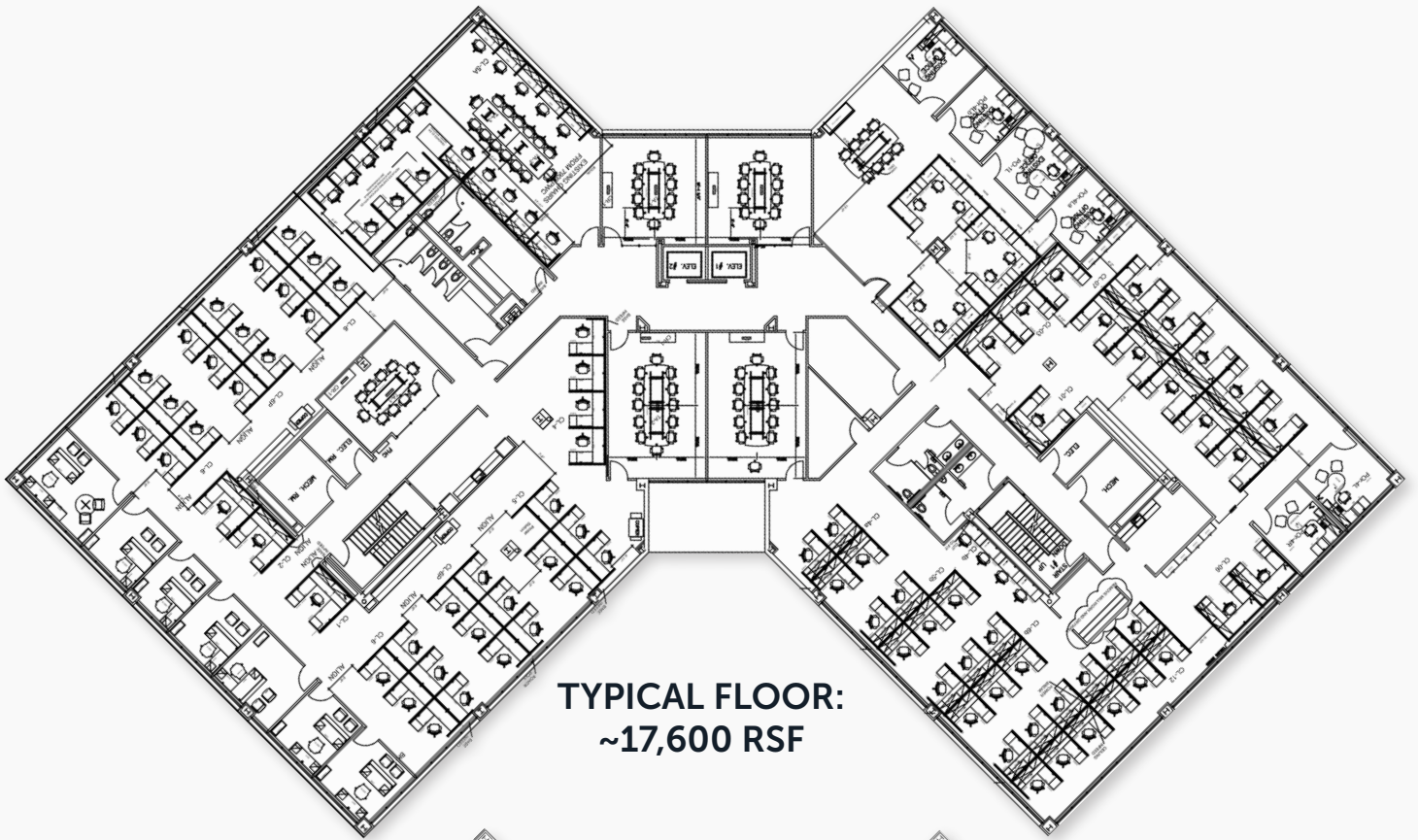


**TYPICAL FLOOR:  
~28,000 RSF**



**EXECUTIVE  
FLOOR 7**

# 9720 BEECHNUT STREET

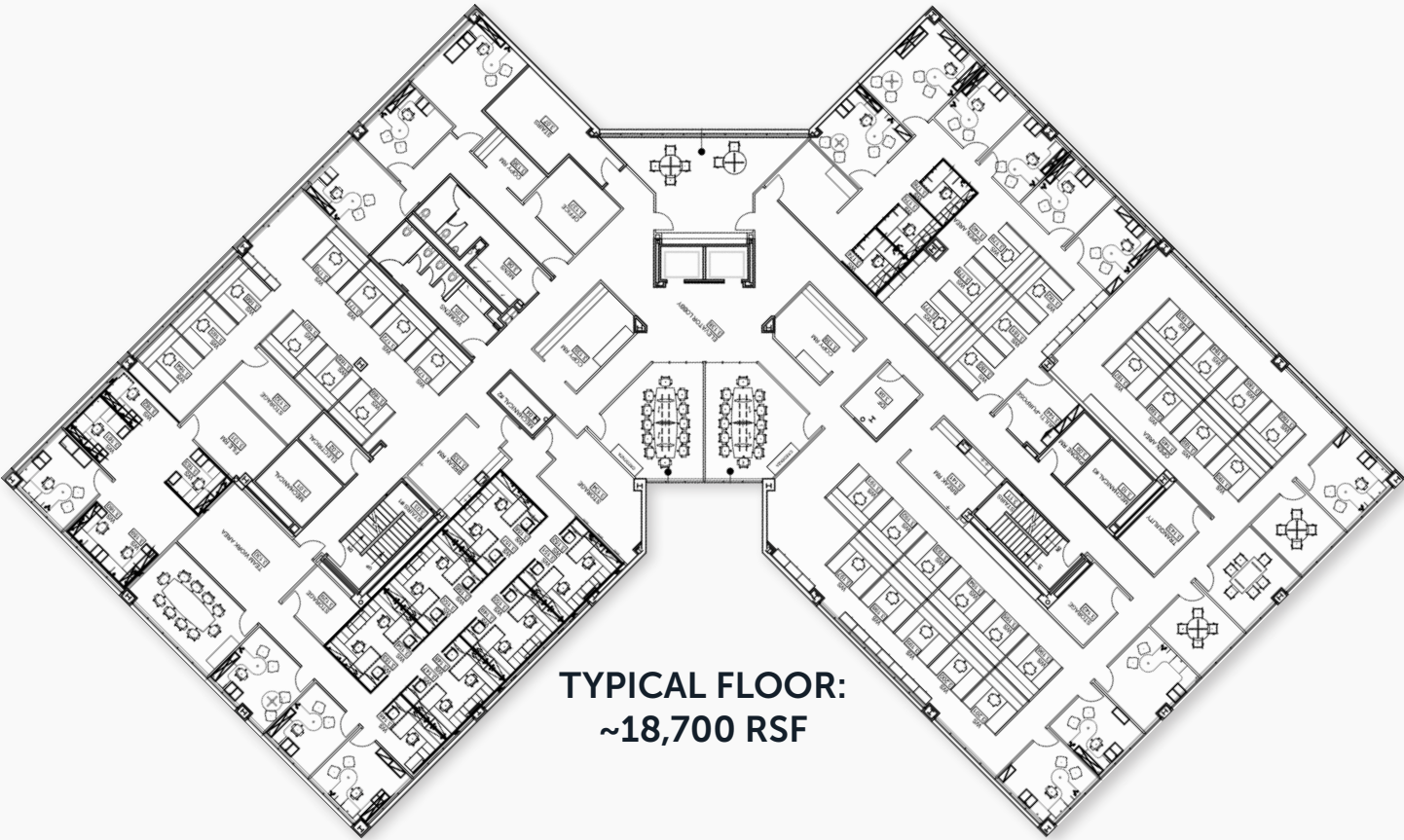


**TYPICAL FLOOR:  
~17,600 RSF**



**EXECUTIVE  
FLOOR 4**

# 9724 BEECHNUT STREET

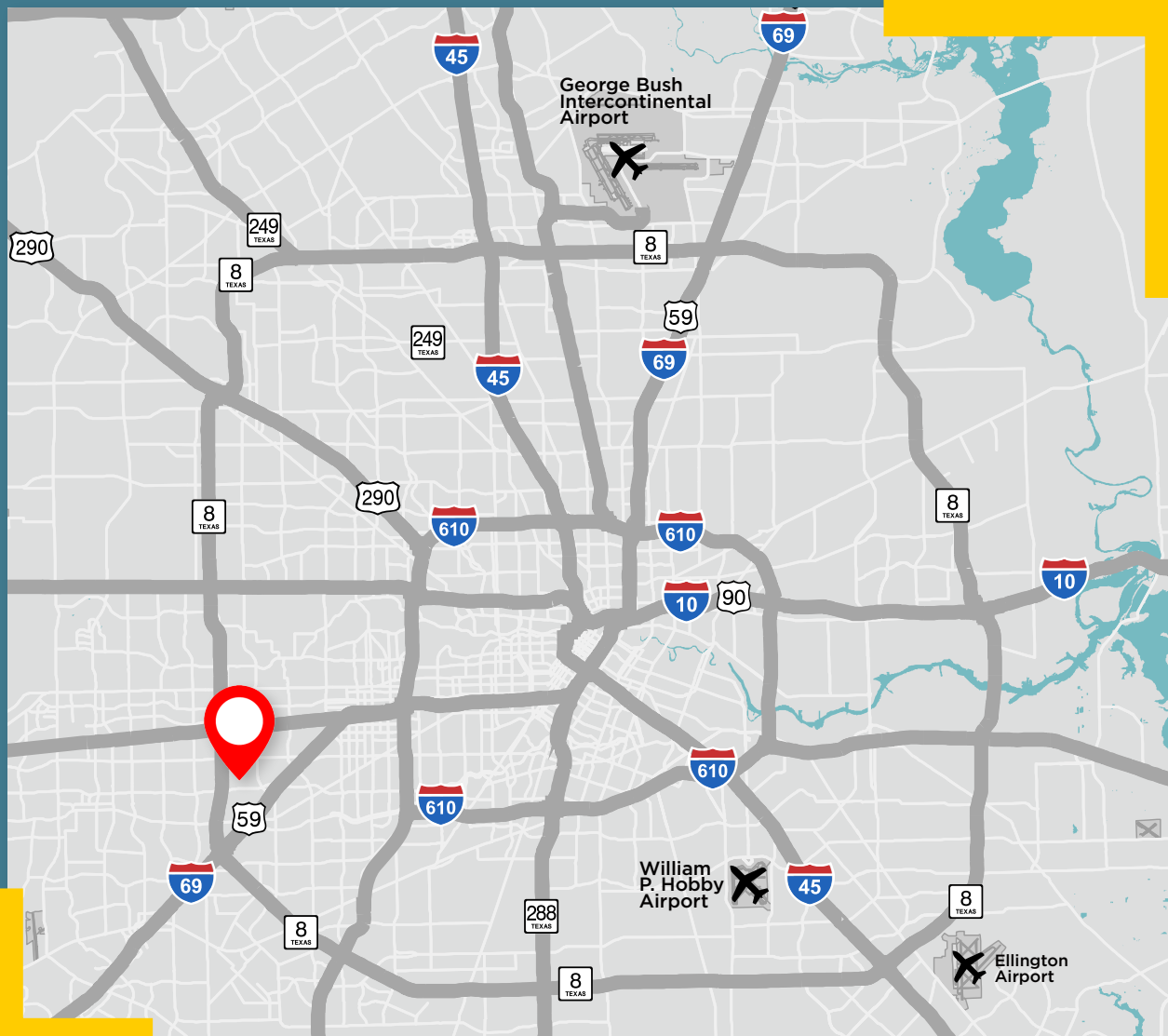


**TYPICAL FLOOR:  
~18,700 RSF**





# Westchase sublease opportunity featuring ~335,300 RSF



Wesley House

+1 832 703-9930  
wesley.house@jll.com

Kendall Wallace

+1 713 823-3637  
kendall.wallace@jll.com

Cody Little

+1 214 536-6331  
cody.little@jll.com

Paul Penland

+1 713 376-5250  
paul.penland@jll.com



Although information has been obtained from sources deemed reliable, neither Owner nor JLL makes any guarantees, warranties or representations, express or implied, as to the completeness or accuracy as to the information contained herein. Any projections, opinions, assumptions or estimates used are for example only. There may be differences between projected and actual results, and those differences may be material. The Property may be withdrawn without notice. Neither Owner nor JLL accepts any liability for any loss or damage suffered by any party resulting from reliance on this information. If the recipient of this information has signed a confidentiality agreement regarding this matter, this information is subject to the terms of that agreement. ©2024 Jones Lang LaSalle IP, Inc. All rights reserved.