



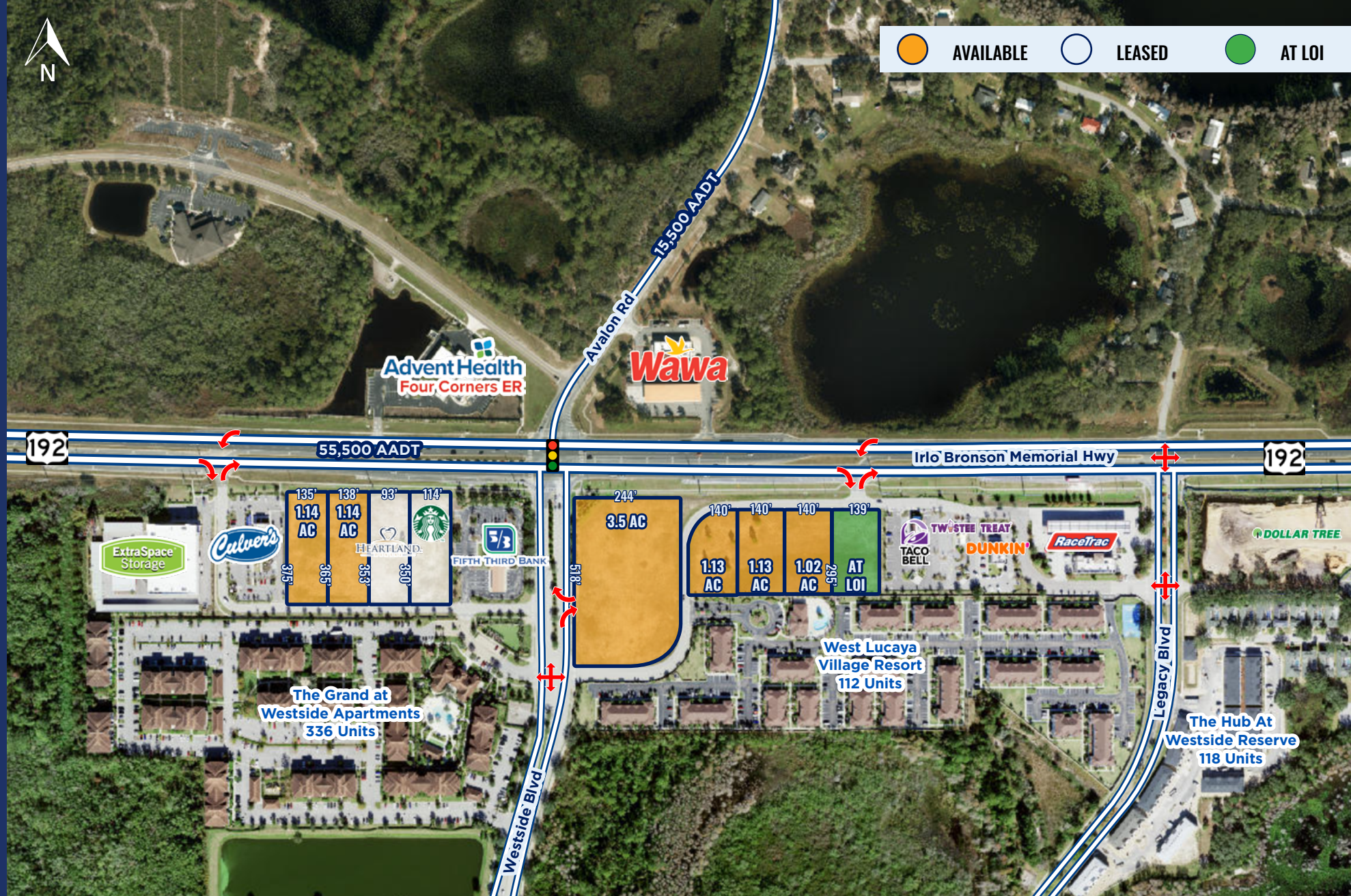
AVAILABLE



LEASED



AT LOI



W 192 & WESTSIDE BLVD, KISSIMMEE, FL 34747

WESTSIDE CORNERS

1.0 TO 3.5 ACRE OUTPARCELS FOR LEASE

STACY MILLER MENENDEZ 321.303.0884 SMENENDEZ@ATLANTICRETAIL.COM



PROPERTY DETAILS

WESTSIDE CORNERS • KISSIMMEE • 1.0 TO 3.5 ACRE OUTPARCELS FOR LEASE

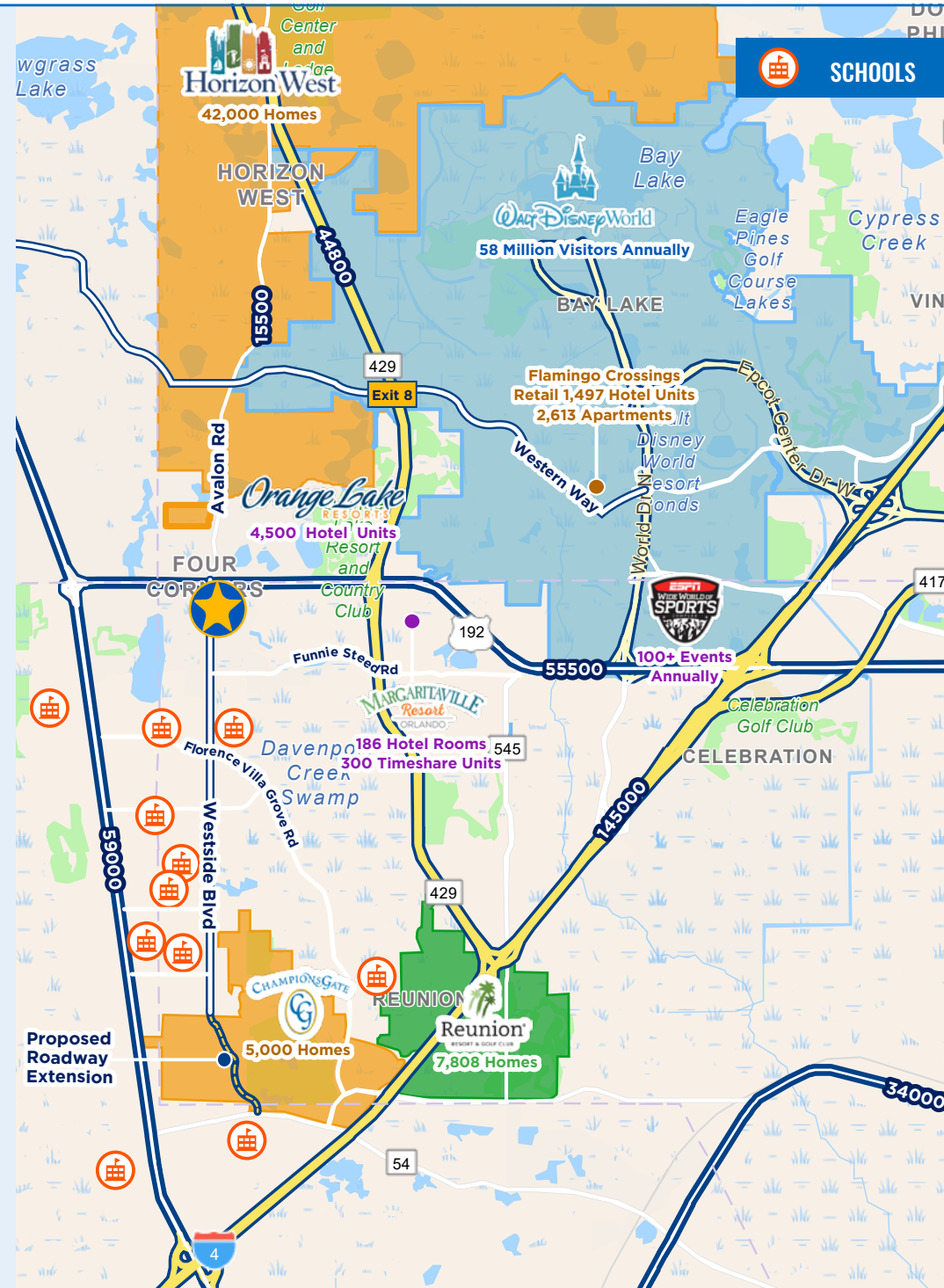
PROPERTY HIGHLIGHTS

- Multiple parcels available for ground lease
- Signalized intersection of W 192 and Avalon Rd (northbound) and
- Westside Blvd (southbound with extension underway to Champions Gate
- High residential growth intersection with 6 schools within 3 miles
- ±2 Miles south of Horizons West, the #3 fastest-growing community in US
- ±5 Miles north of Champions Gate & Reunion, with ±12,000 Residential Lodging Units
- Excellent traffic counts (±55,500 AADT) and frontage along W192

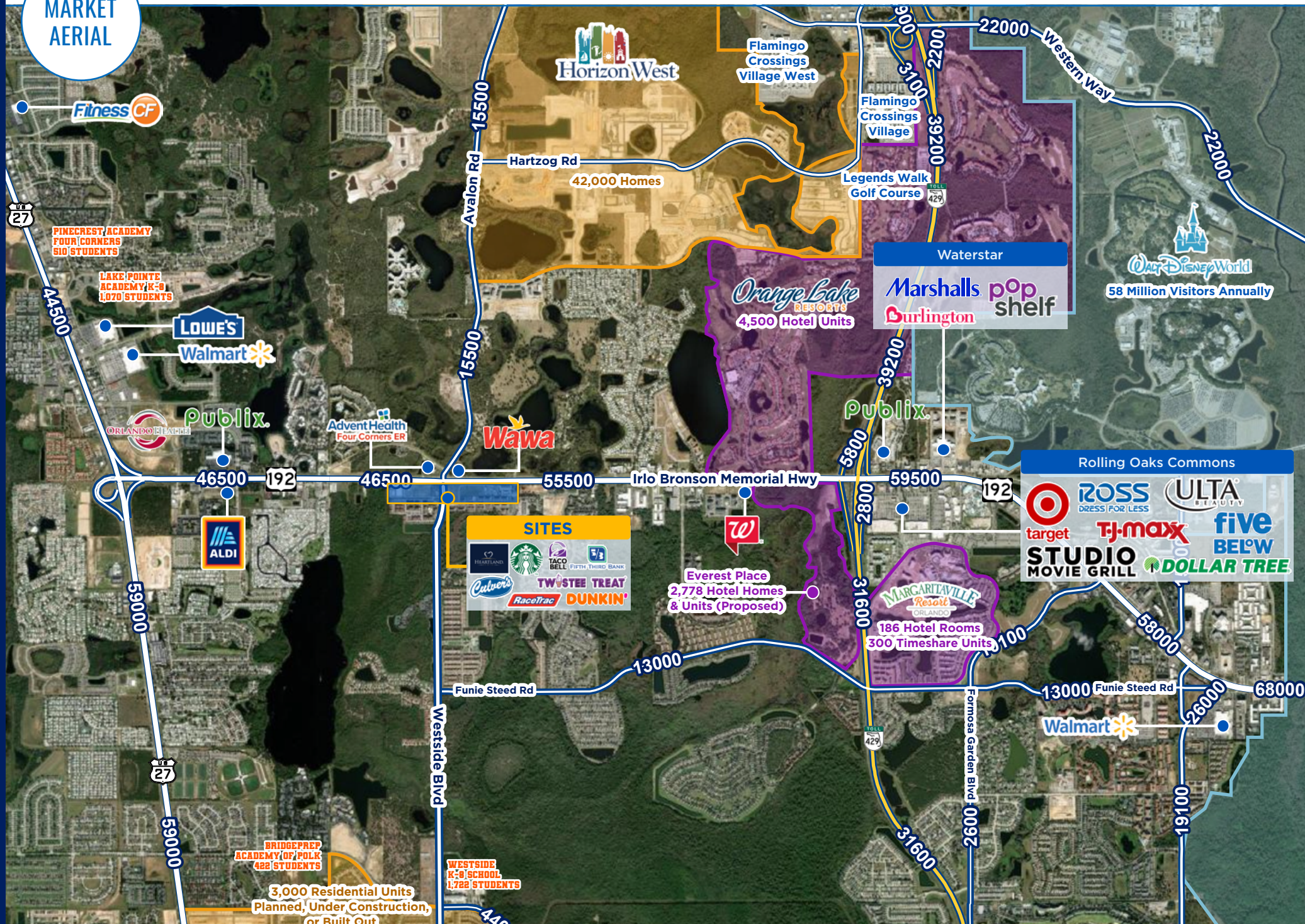
TOURISM HOUSING DEMOGRAPHICS

29,232 TOURIST HOUSING UNITS WITHIN 5 MILES

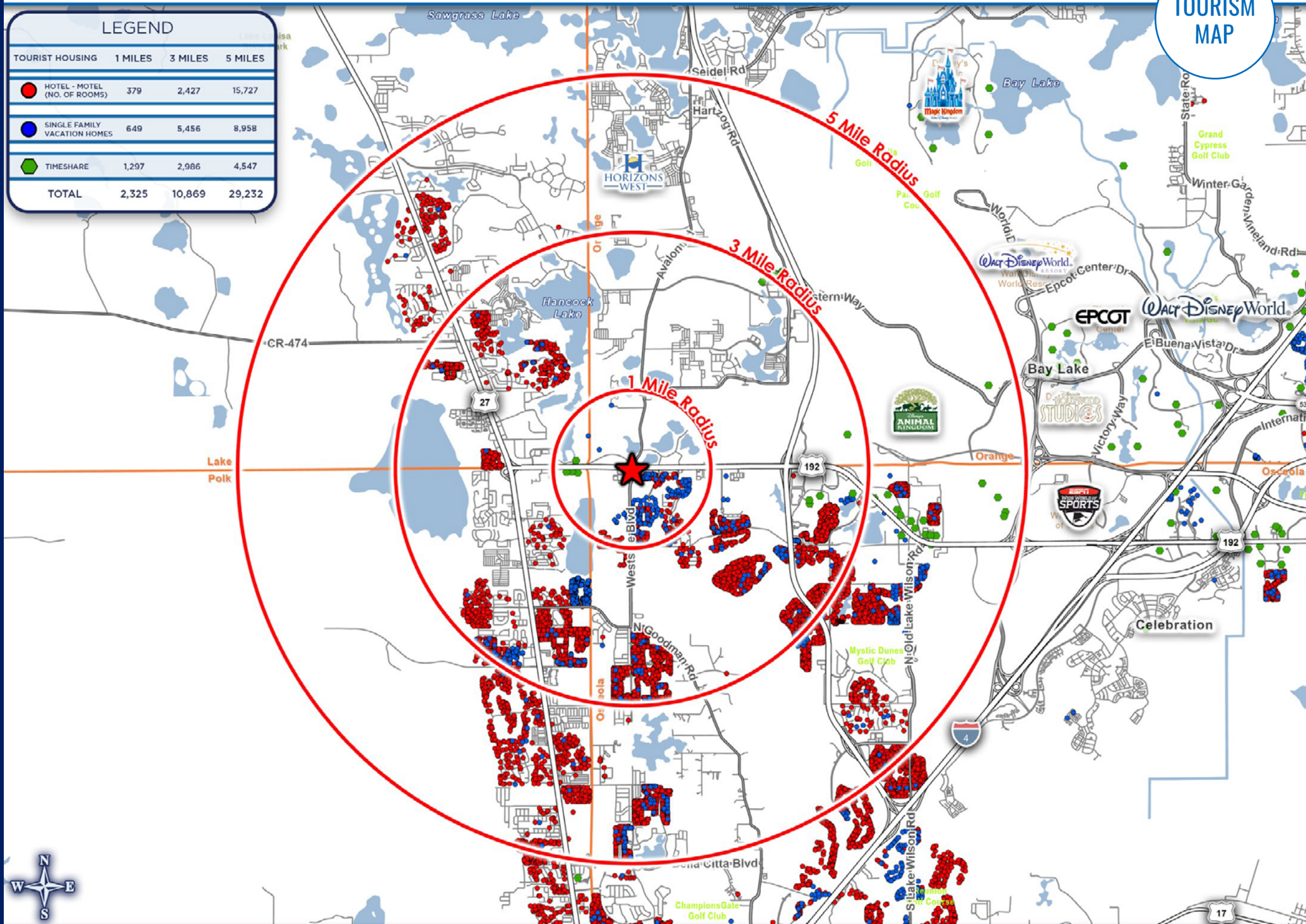
TOURISM HOUSING	1 MILE	3 MILE	5 MILE
HOTEL-MOTEL (NO. OF ROOMS)	379	2,427	15,727
SINGLE-FAMILY VACATION HOMES	649	5,456	8,958
TIMESHARE	1,297	2,986	4,547
TOTAL	2,325	10,869	29,232



MARKET
AERIAL



LEGEND			
TOURIST HOUSING	1 MILES	3 MILES	5 MILES
● HOTEL - MOTEL (NO. OF ROOMS)	379	2,427	15,727
● SINGLE FAMILY VACATION HOMES	649	5,456	8,958
● TIMESHARE	1,297	2,986	4,547
TOTAL	2,325	10,869	29,232



W 192 & WESTSIDE BLVD, KISSIMMEE, FL 34747

WESTSIDE CORNERS

1.0 TO 3.5 ACRE OUTPARCELS FOR LEASE

STACY MILLER MENENDEZ

321.303.0884

SMENENDEZ@ATLANTICRETAIL.COM



ORLANDO

1180 SOLANA AVENUE
WINTER PARK FL, 32789
407.919.6575

WWW.ATLANTICRETAIL.COM

 [LINKEDIN.COM/COMPANY/ATLANTIC-RETAIL-PROPERTIES](https://www.linkedin.com/company/atlantic-retail-properties)
 [INSTAGRAM.COM/ATLANTIC_RETAIL/](https://www.instagram.com/atlantic_retail/)

 **REALTY RESOURCES**  **CHAINLINKS**
RETAIL ADVISORS