

# 10400

## EATON PLACE

FAIRFAX, VIRGINIA

# 1,141 - 8,497 RSF AVAILABLE NOW!



### BUILDING AMENITIES

- One Move-in Ready Spec Suite with Kitchen
- Tenant-only fitness center
- Wi-Fi lounge and self-service vending with healthy snacks, lunches and beverages
- Free surface parking
- Stable ownership with 25-year track record of successful ownership
- Onsite engineer and responsive management company
- Competitive rental rates
- Significant building renovations
- Storage available to tenants

### LOCATION AMENITIES

- Part of Fairfax Tenants LIFFT Program w/\$6.00 PSF Lease Incentives available (More info at linked website)
- Immediate access to I-66 and 123 (Chain Bridge Road)
- Convenient to Fairfax City Courthouse and Fairfax Government Center
- Walking distance to Point 50 - small shop retail buildings and Amazon Fresh Grocery
- Next door to Best Western hotel



## NEWMARK

### CONTACT INFORMATION

Larry FitzGerald  
larry.fitzgerald@nrmk.com  
703-918-0221

Cole Spalding  
cole.spalding@nrmk.com  
703-918-0230

Nick Kuhn  
nicholas.kuhn@nrmk.com  
571-215-9213

The information contained herein has been obtained from sources deemed reliable but has not been verified and no guarantee, warranty or representation, either express or implied, is made with respect to such information. Terms of sale or lease and availability are subject to change or withdrawal without notice.

1420 Spring Hill Road, Suite 600, McLean, VA 22102



# 10400

## EATON PLACE

FAIRFAX, VIRGINIA



## POINT 50

### TENANTS INCLUDE:

- AMAZON FRESH GROCERY
- TPG PEDIATRICS
- COMPASS COFFEE
- ANDY'S PIZZA
- IDEAL IMAGE
- ORGANIC NAILS
- BIG BUNS



COMPASS  
COFFEE

100 110



200 210 220

Ideal Image<sup>®</sup>  
MedSpa

amazon  
fresh

400

TPG  
Pediatrics

300 310



FAIRFAX BLVD / LEE HWY RTE 50/29



# NEWMARK

The information contained herein has been obtained from sources deemed reliable but has not been verified and no guarantee, warranty or representation, either express or implied, is made with respect to such information. Terms of sale or lease and availability are subject to change or withdrawal without notice.

### CONTACT INFORMATION

Larry FitzGerald  
larry.fitzgerald@nrmk.com  
703-918-0221

Cole Spalding  
cole.spalding@nrmk.com  
703-918-0230

Nick Kuhn  
nicholas.kuhn@nrmk.com  
571-215-9213

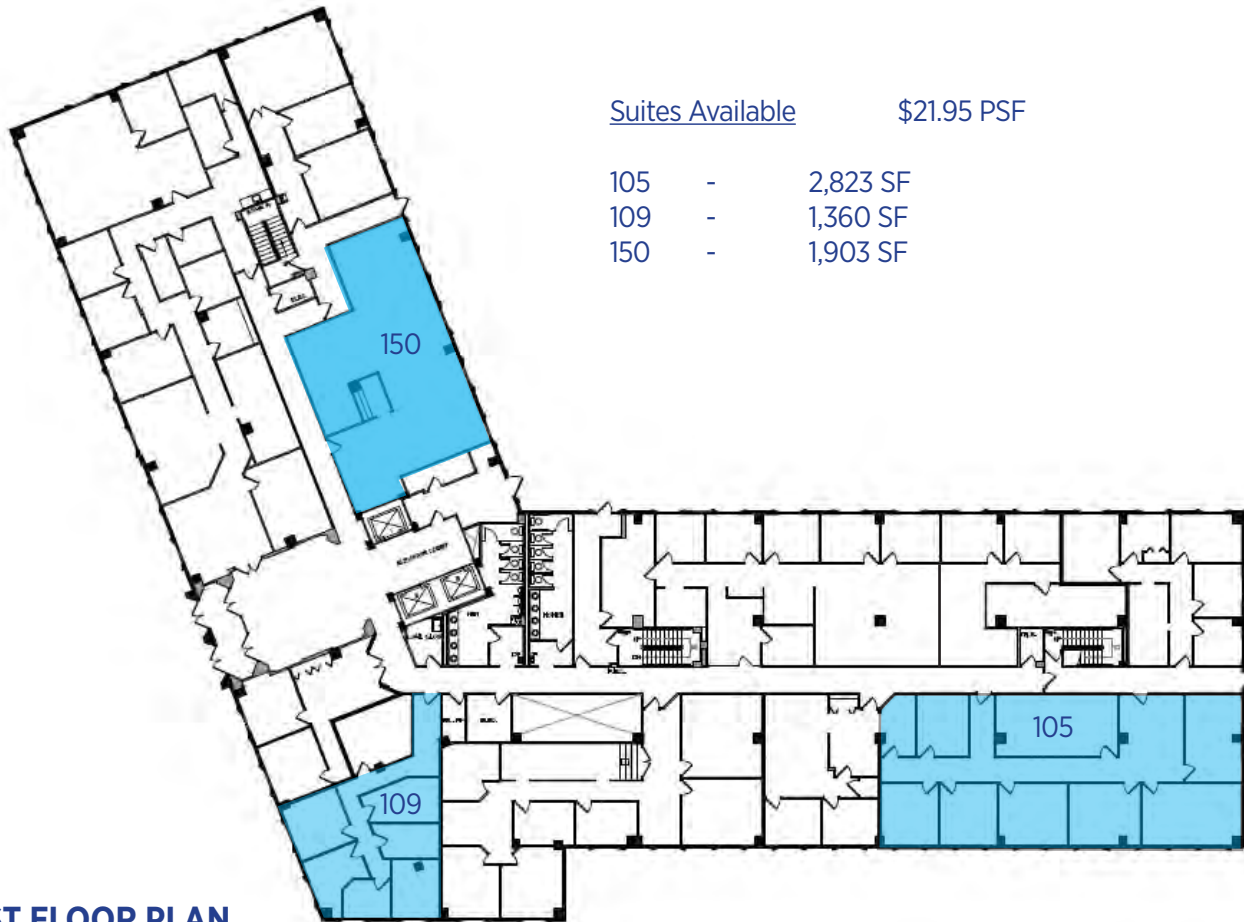
1420 Spring Hill Road, Suite 600, McLean, VA 22102



# 10400

## EATON PLACE

FAIRFAX, VIRGINIA



### Suites Available

\$21.95 PSF

105	-	2,823 SF
109	-	1,360 SF
150	-	1,903 SF

1ST FLOOR PLAN



# NEWMARK

The information contained herein has been obtained from sources deemed reliable but has not been verified and no guarantee, warranty or representation, either express or implied, is made with respect to such information. Terms of sale or lease and availability are subject to change or withdrawal without notice.

### CONTACT INFORMATION

Larry FitzGerald  
larry.fitzgerald@nrmk.com  
703-918-0221

Cole Spalding  
cole.spalding@nrmk.com  
703-918-0230

Nick Kuhn  
nicholas.kuhn@nrmk.com  
571-215-9213

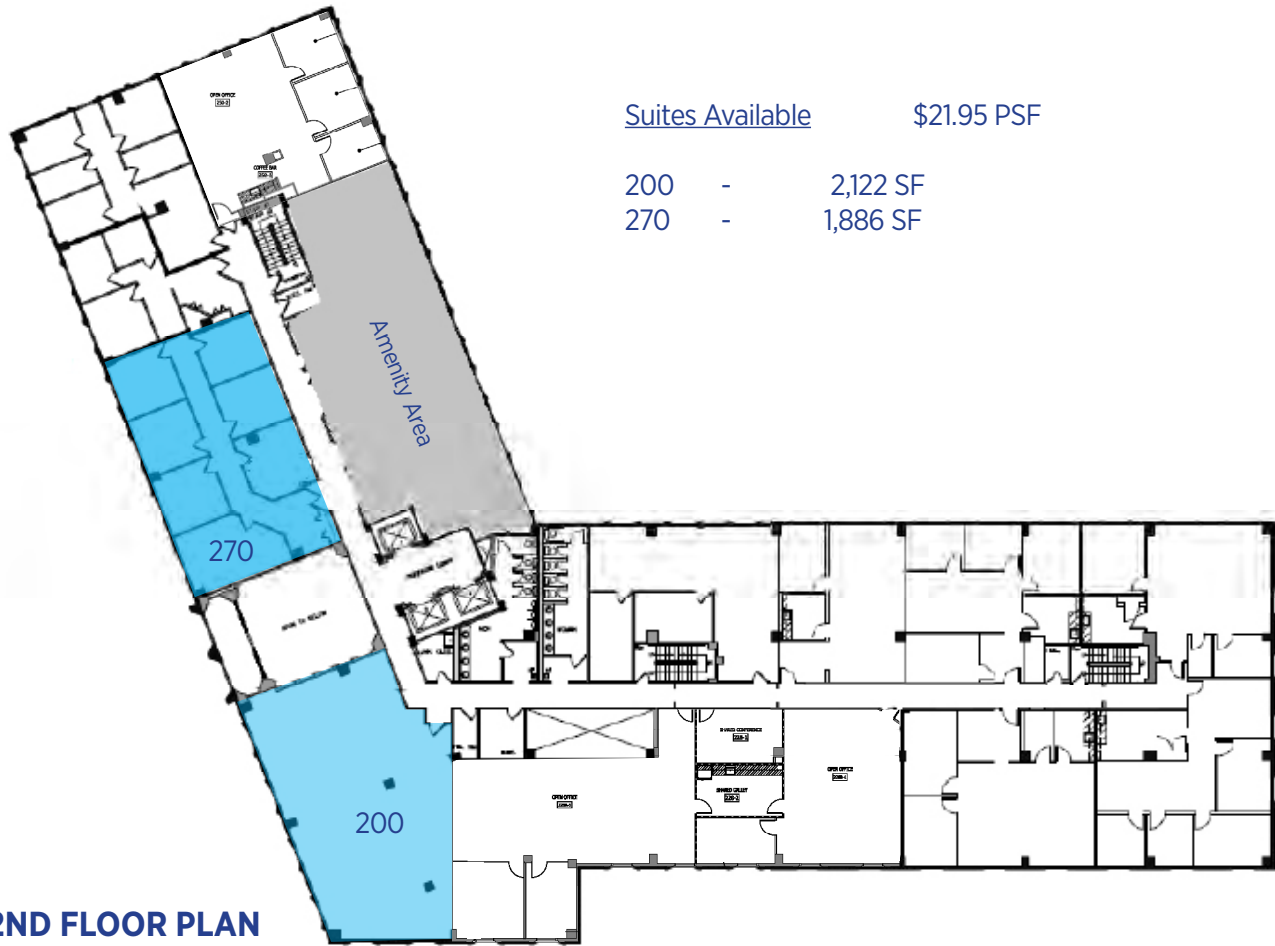
1420 Spring Hill Road, Suite 600, McLean, VA 22102



# 10400

## EATON PLACE

FAIRFAX, VIRGINIA



# NEWMARK

The information contained herein has been obtained from sources deemed reliable but has not been verified and no guarantee, warranty or representation, either express or implied, is made with respect to such information. Terms of sale or lease and availability are subject to change or withdrawal without notice.

## CONTACT INFORMATION

Larry FitzGerald  
larry.fitzgerald@nrmk.com  
703-918-0221

Cole Spalding  
cole.spalding@nrmk.com  
703-918-0230

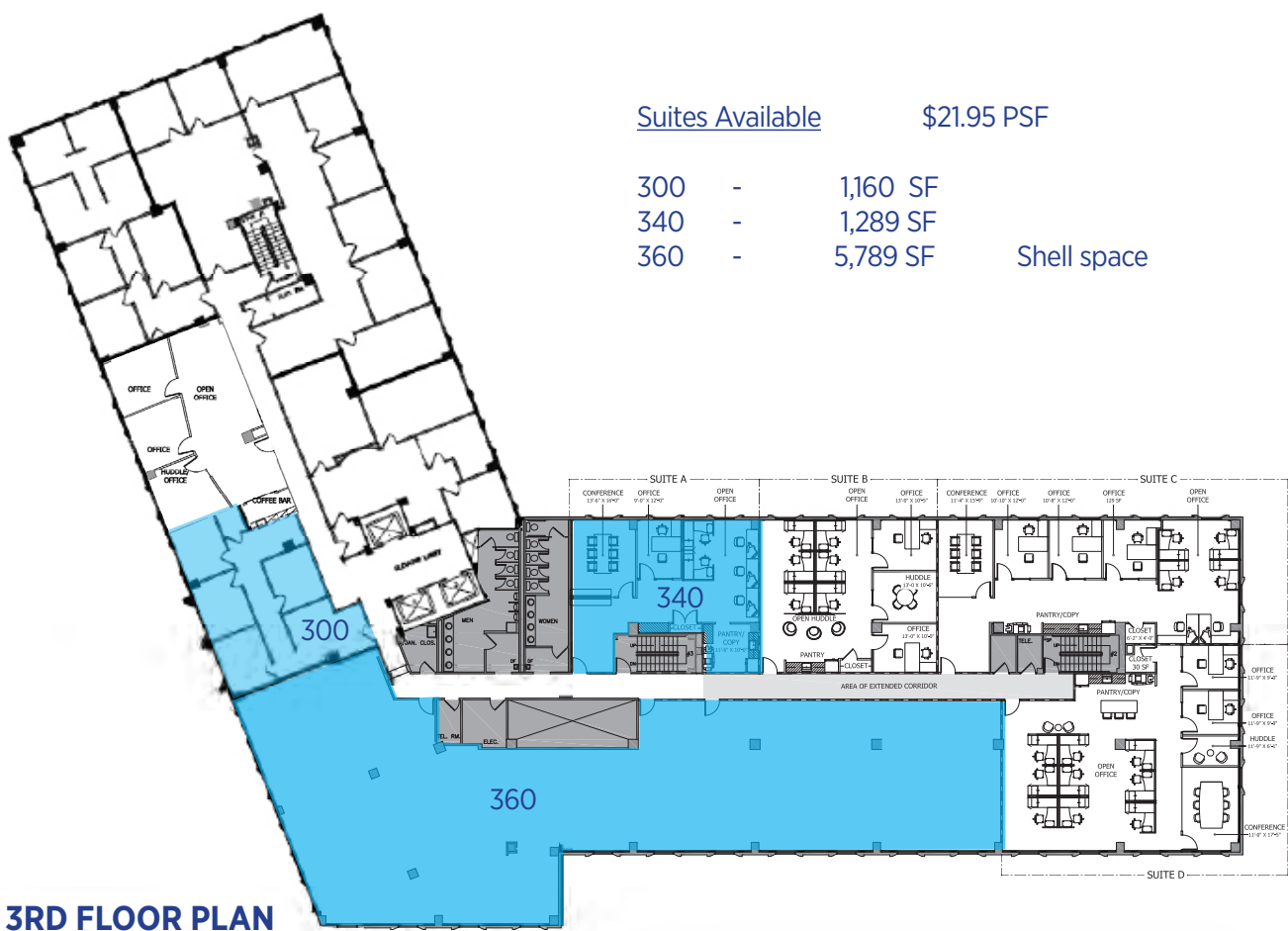
Nick Kuhn  
nicholas.kuhn@nrmk.com  
571-215-9213

1420 Spring Hill Road, Suite 600, McLean, VA 22102

# 10400

## EATON PLACE

FAIRFAX, VIRGINIA



NEWMARK

The information contained herein has been obtained from sources deemed reliable but has not been verified and no guarantee, warranty or representation, either express or implied, is made with respect to such information. Terms of sale or lease and availability are subject to change or withdrawal without notice.

### CONTACT INFORMATION

Larry FitzGerald  
larry.fitzgerald@nmrk.com  
703-918-0221

Cole Spalding  
cole.spalding@nmrk.com  
703-918-0230

Nick Kuhn  
nicholas.kuhn@nmrk.com  
571-215-9213

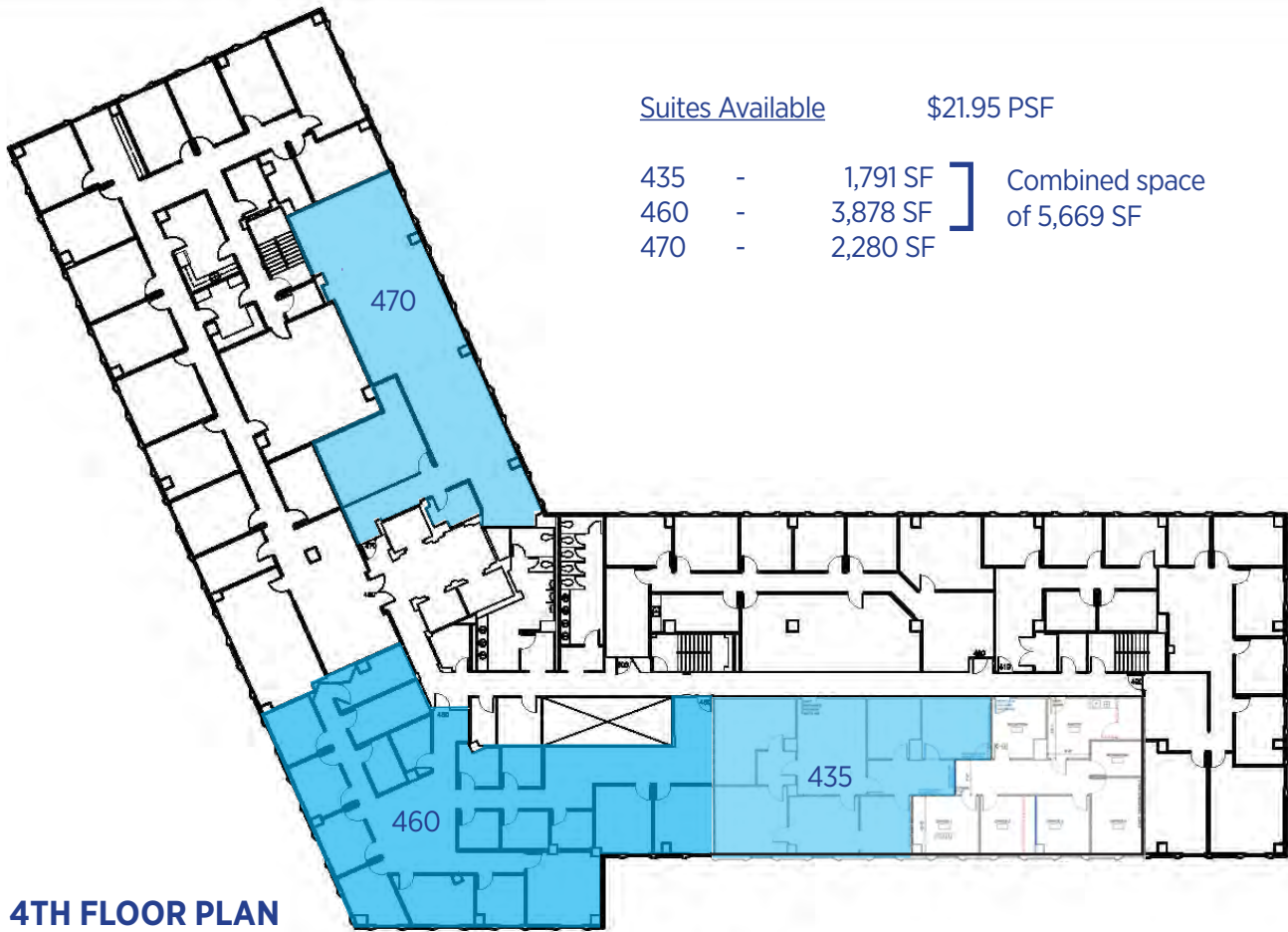
1420 Spring Hill Road, Suite 600, McLean, VA 22102



# 10400

## EATON PLACE

FAIRFAX, VIRGINIA



# NEWMARK

The information contained herein has been obtained from sources deemed reliable but has not been verified and no guarantee, warranty or representation, either express or implied, is made with respect to such information. Terms of sale or lease and availability are subject to change or withdrawal without notice.

### CONTACT INFORMATION

Larry FitzGerald  
larry.fitzgerald@nmrk.com  
703-918-0221

Cole Spalding  
cole.spalding@nmrk.com  
703-918-0230

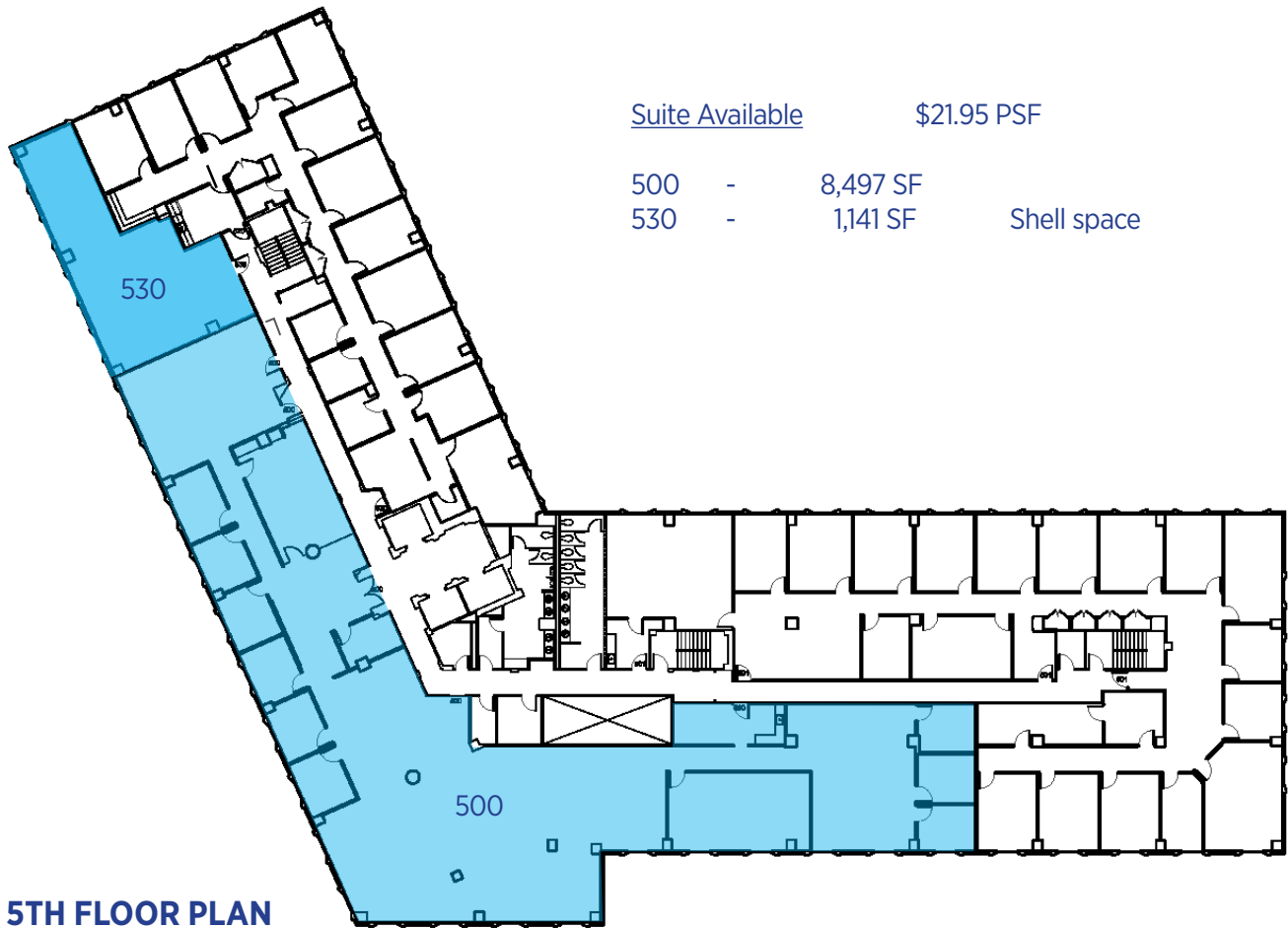
Nick Kuhn  
nicholas.kuhn@nmrk.com  
571-215-9213

1420 Spring Hill Road, Suite 600, McLean, VA 22102

# 10400

## EATON PLACE

FAIRFAX, VIRGINIA



## NEWMARK

The information contained herein has been obtained from sources deemed reliable but has not been verified and no guarantee, warranty or representation, either express or implied, is made with respect to such information. Terms of sale or lease and availability are subject to change or withdrawal without notice.

### CONTACT INFORMATION

Larry FitzGerald  
larry.fitzgerald@nrmk.com  
703-918-0221

Cole Spalding  
cole.spalding@nrmk.com  
703-918-0230

Nick Kuhn  
nicholas.kuhn@nrmk.com  
571-215-9213

1420 Spring Hill Road, Suite 600, McLean, VA 22102