

NOW LEASING

±131,536 RSF OFFICE, RETAIL & MEDICAL SPACE



15350 & 15400  
SHERMAN WAY  
VAN NUYS, CA 91406

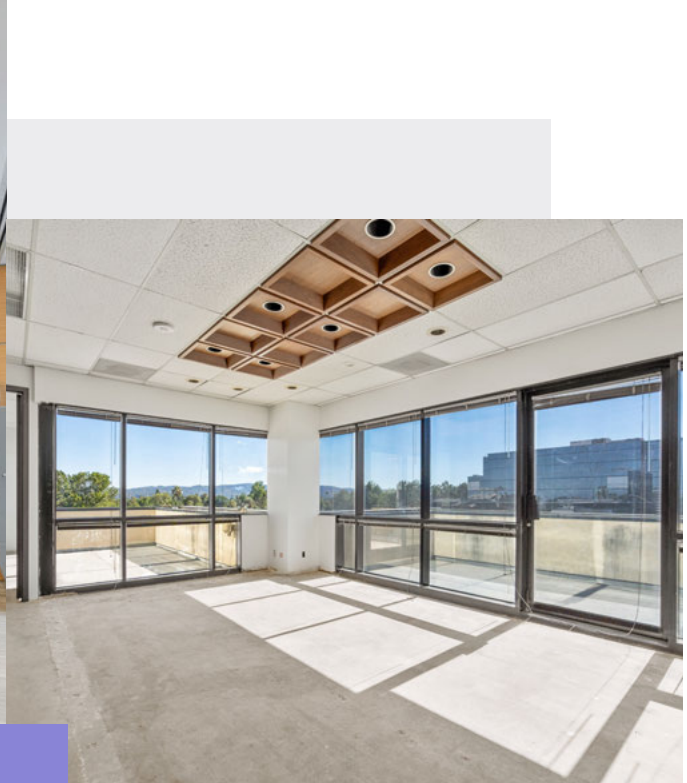


**David Solomon**  
+1 818 937 4545  
david.solomon@colliers.com  
Lic. No. 01209699

**Matthew Heyn**  
+1 818 334 1860  
matt.heyne@colliers.com  
Lic. No. 01306148

**Caitlin Hoffman**  
+1 818 334 1850  
caitlin.hoffman@colliers.com  
Lic. No. 01935762







# PROPERTY HIGHLIGHTS



- › Conveniently located in the heart of the San Fernando Valley
- › Class A office complex
- › Building and pylon signage available
- › On-site security and management
- › Easy access to the 405 Freeway and the 101 Freeway
- › Fiber connectivity available

## Parking

### Unreserved Parking:

\$89.25/stall/month

### Reserved Parking:

\$131.25/stall/month

# AVAILABILITY

## 15350 Sherman Way

SUITE	SQUARE FOOTAGE	RATE
170	±10,581 RSF	\$2.55 MG
150	±7,307 RSF	\$2.25 FSG
250	±5,028 RSF	\$2.25 FSG
255	±8,697 RSF	\$2.25 FSG
300	±9,052 RSF	\$2.25 FSG
310	±963 RSF	\$2.25 FSG
315	±1,363 RSF	\$2.25 FSG
325	±1,717 RSF	\$2.25 FSG
350	±12,466 RSF	\$2.25 FSG
380	±5,735 RSF	\$2.25 FSG
400	Full floor opportunity ±5,000 - 32,907 RSF	\$2.25 FSG

## 15400 Sherman Way

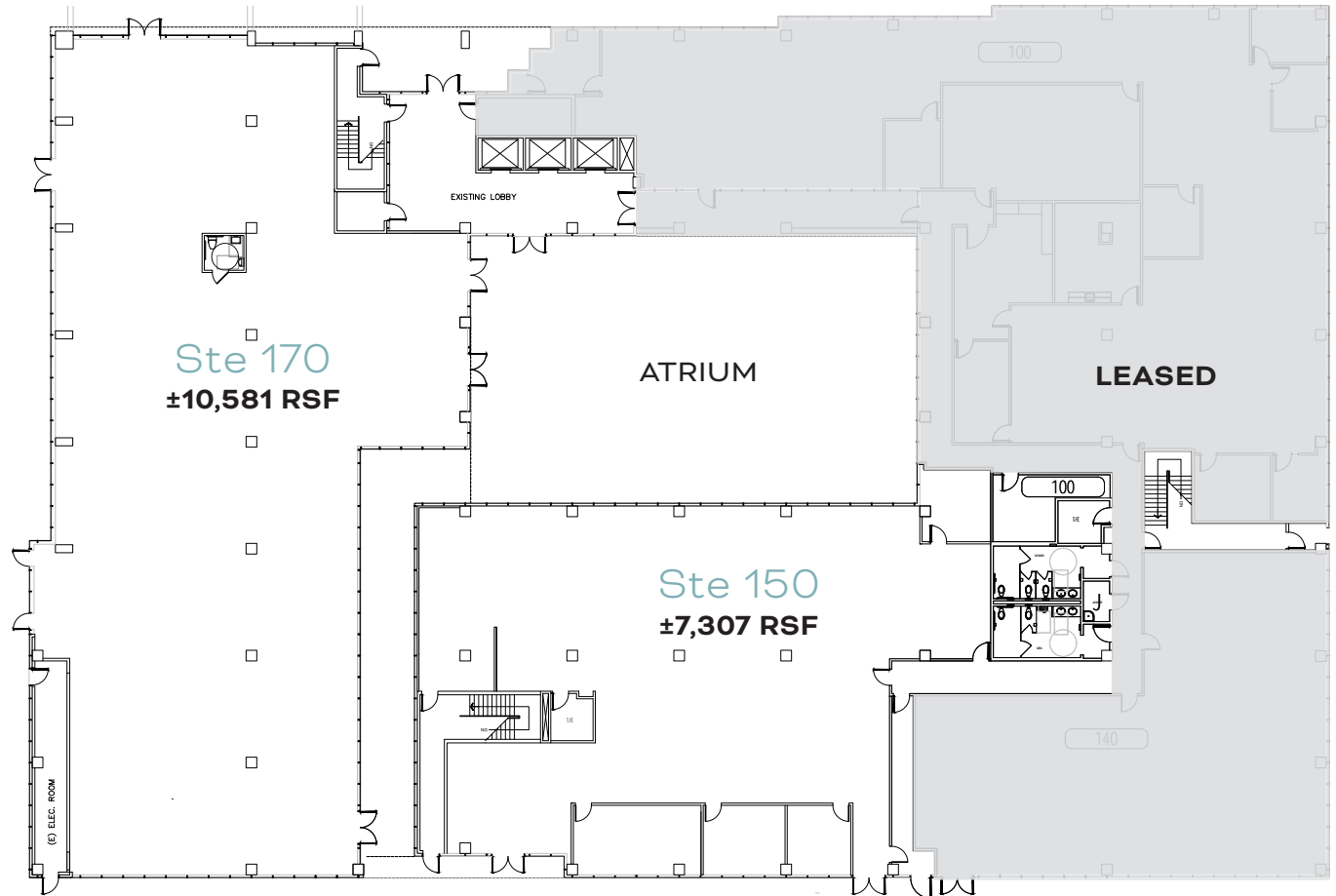
SUITE	SQUARE FOOTAGE	RATE
120	±1,153 RSF	\$2.25 FSG
170	±3,348 RSF	\$2.25 FSG
200	±19,165 RSF	\$2.25 FSG
380	±10,865 RSF	\$2.25 FSG
450	±8,834 RSF	\$2.25 FSG
475	3,305 RSF	\$2.25 FSG



# 15350 SHERMAN WAY

## FIRST FLOOR

- › Suite 150\* ±7,307 RSF
  - › Suite 170\* ±10,581 RSF
- \*Contiguous to ±17,888 RSF



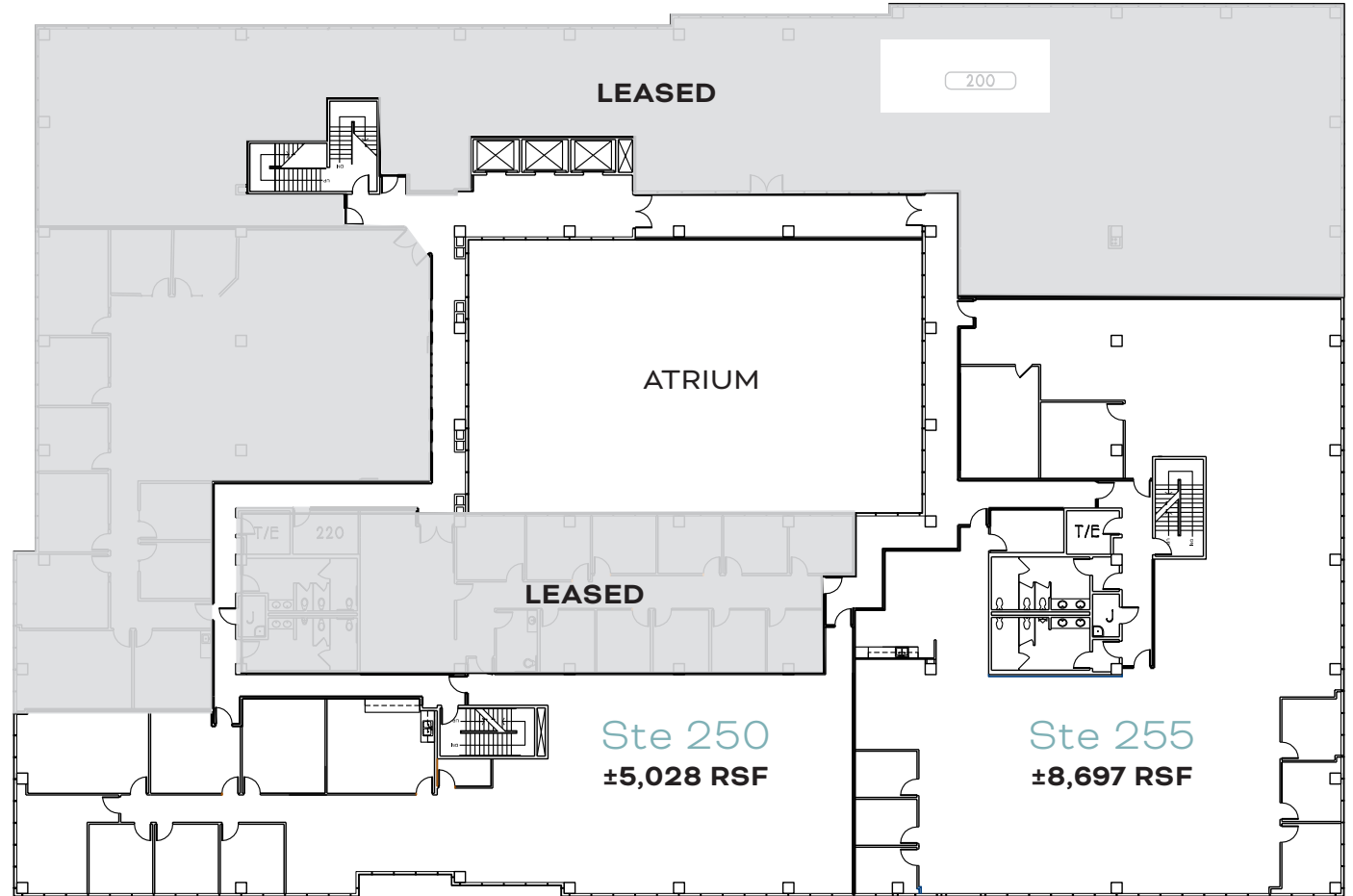
# 15350 SHERMAN WAY

## SECOND FLOOR

› Suite 250\* ±5,028 RSF

› Suite 255\* ±8,697 RSF

\*Contiguous to ±13,725 RSF

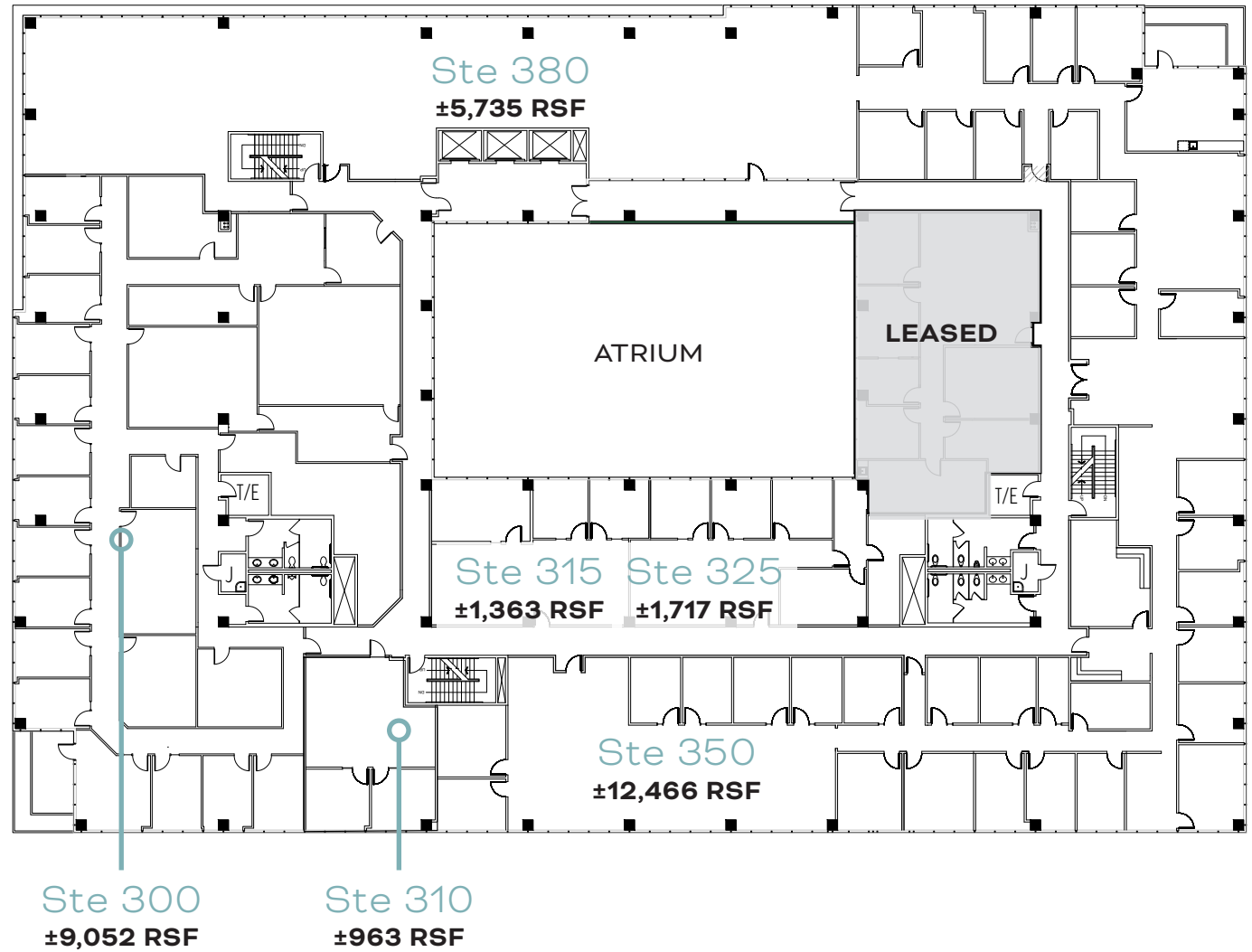


# 15350 SHERMAN WAY

## THIRD FLOOR

- › Suite 300 ±9,052 RSF
- › Suite 310 ±963 RSF
- › Suite 315 ±1,363 RSF
- › Suite 325 ±1,717 RSF
- › Suite 350 ±12,466 RSF
- › Suite 380 ±5,735 RSF

Full Floor Contiguous  
to ±31,296 RSF



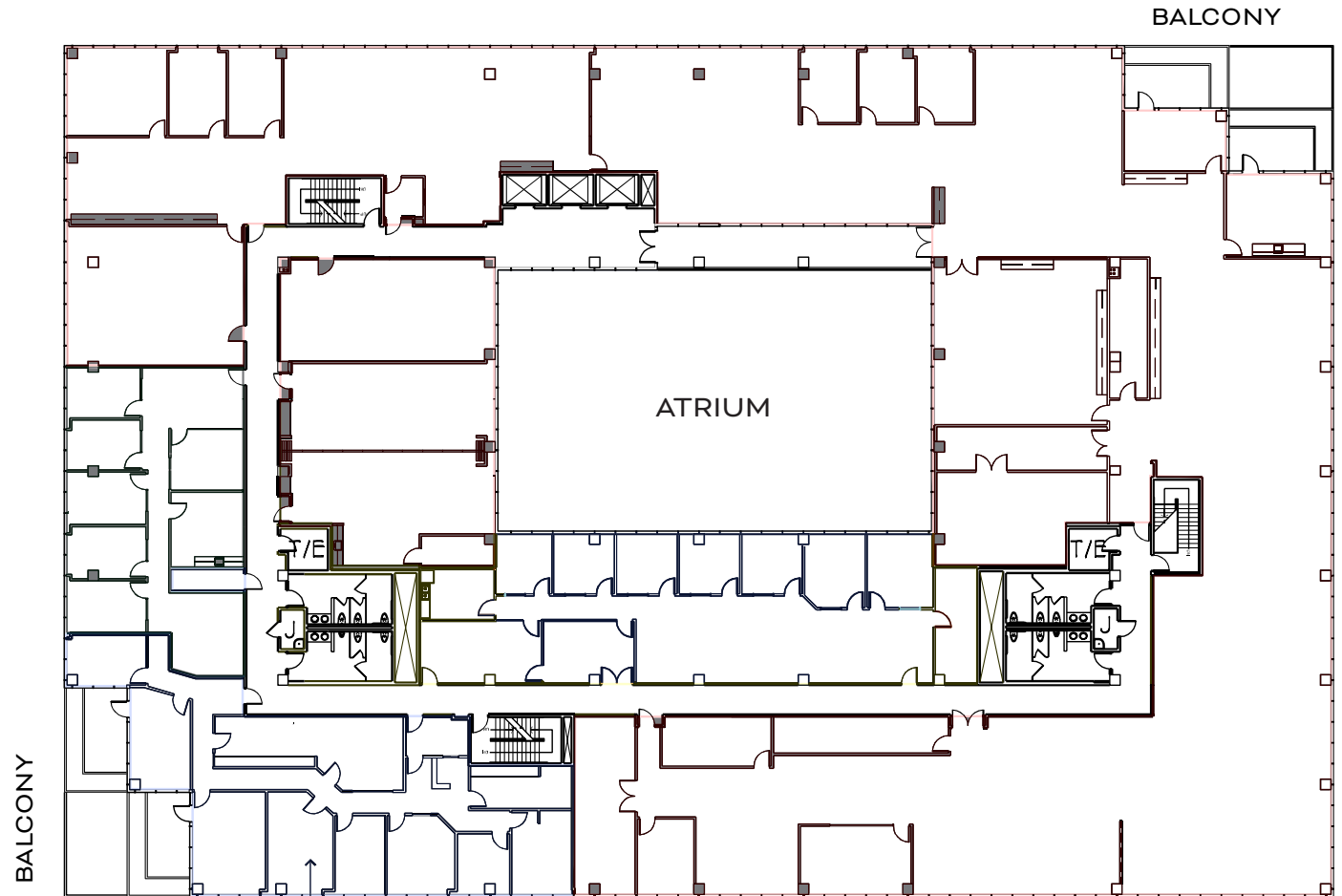


# 15350 SHERMAN WAY

## FOURTH FLOOR

› Suite 400  
±5,000 – 32,907 RSF

Full Floor Opportunity

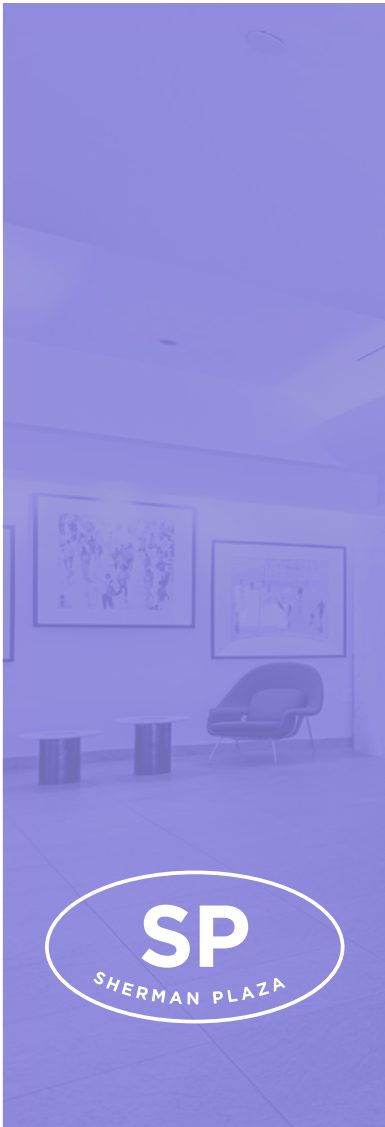
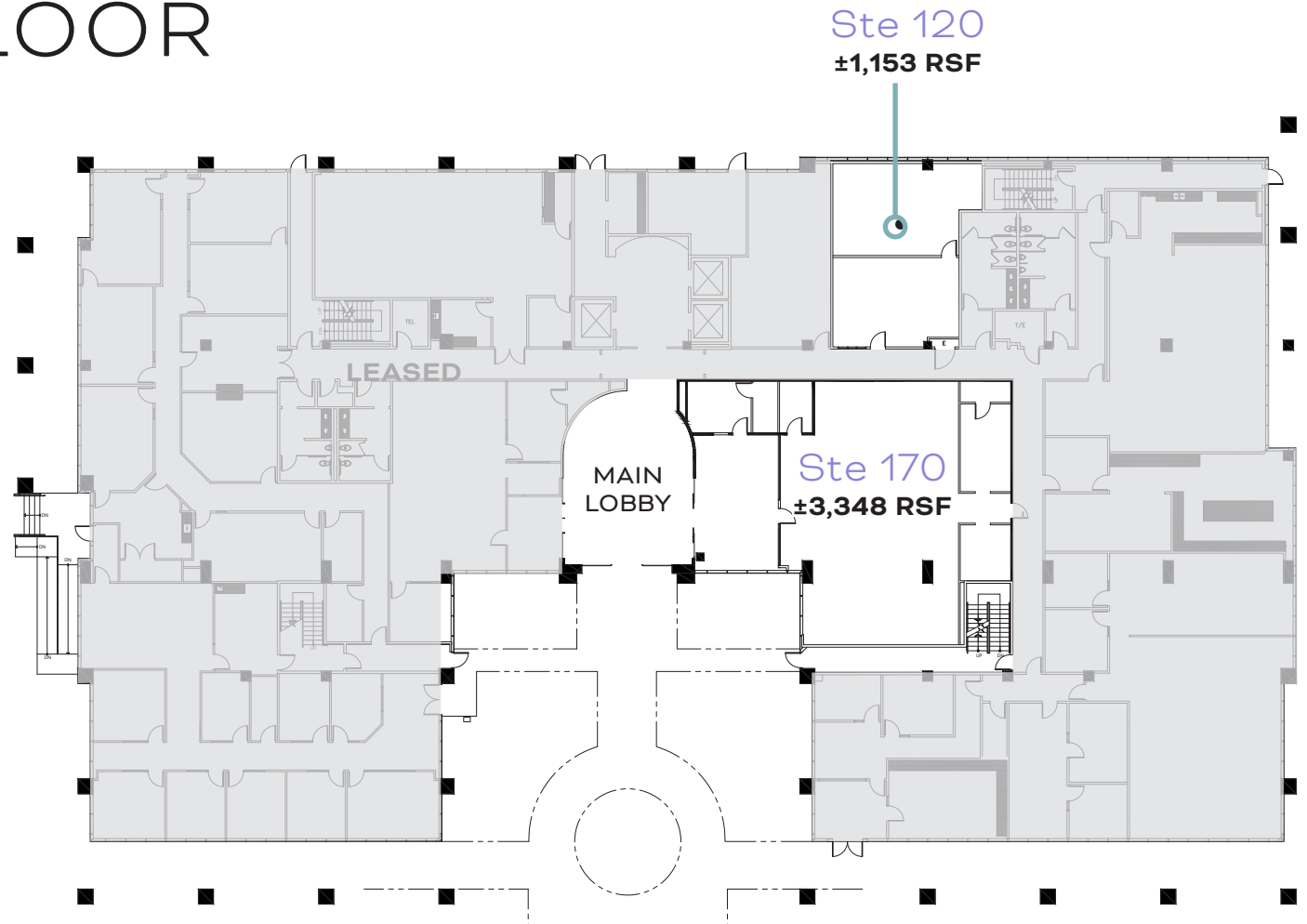




# 15400 SHERMAN WAY

## FIRST FLOOR

- › Suite 120 ±1,153 RSF
- › Suite 170 ±3,348 RSF

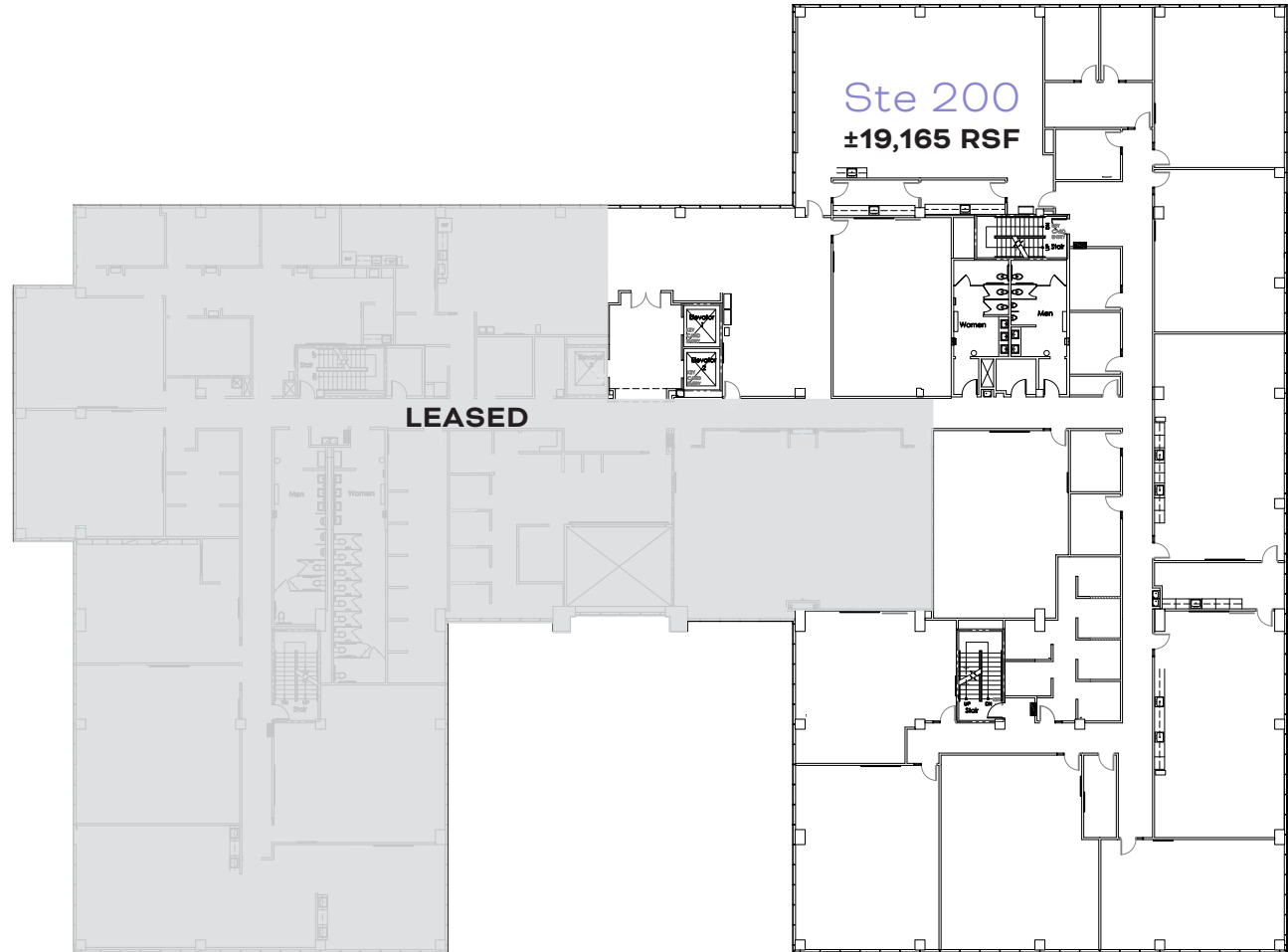


# 15400 SHERMAN WAY

## SECOND FLOOR

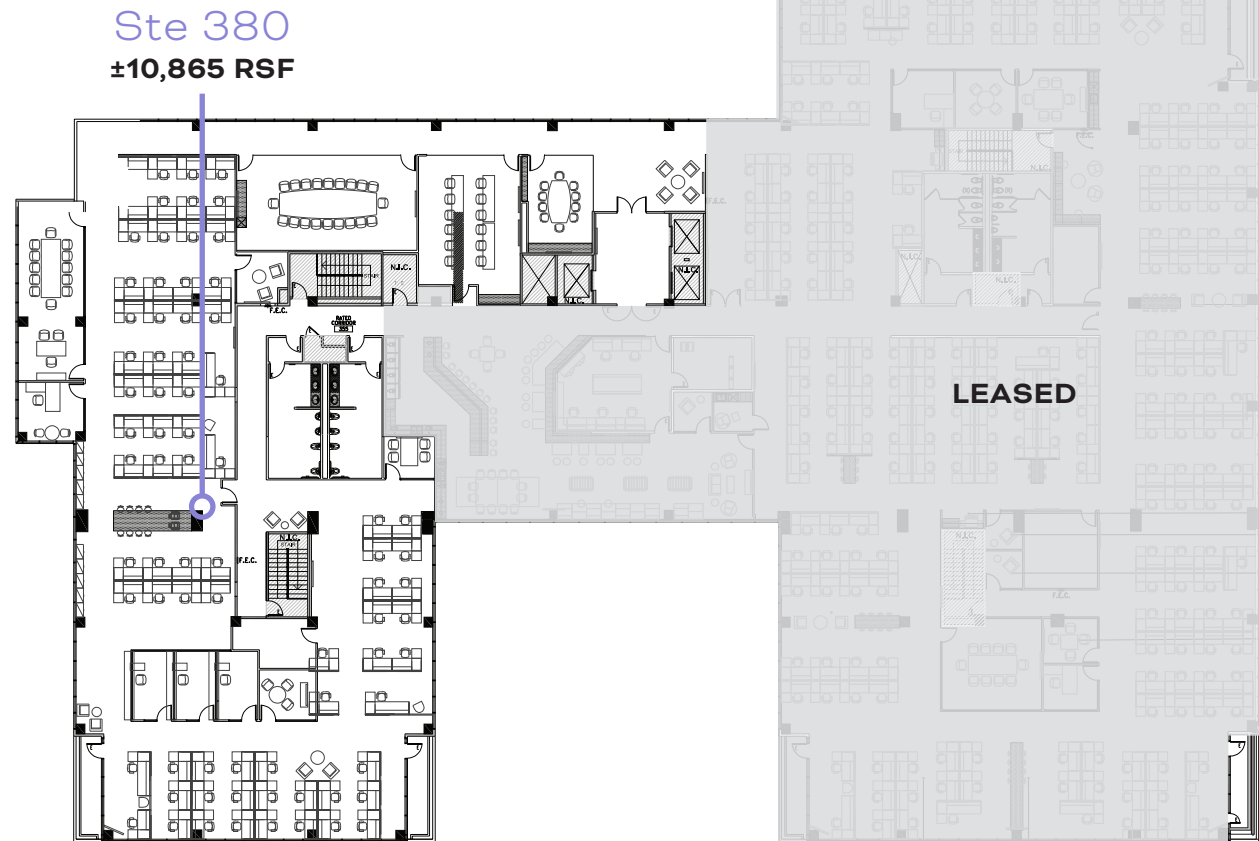
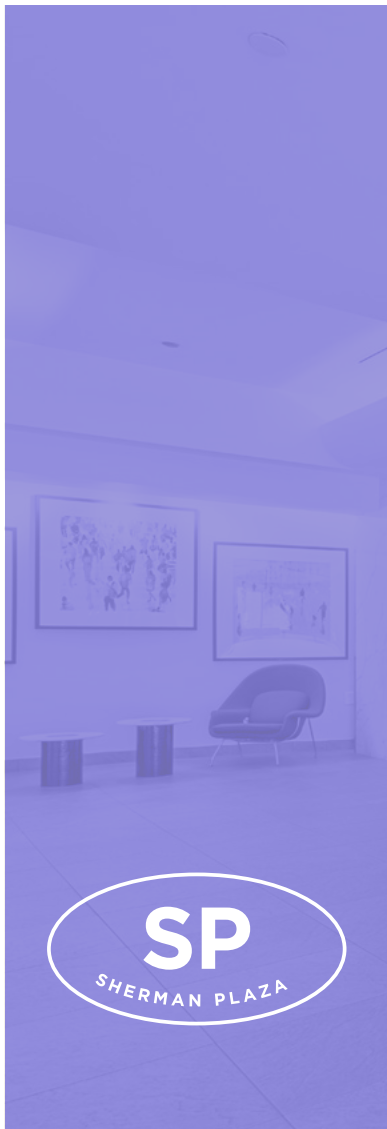
› Suite 200 ±19,165 RSF

Educational Layout



# 15400 SHERMAN WAY THIRD FLOOR

› Suite 380 ±10,865 RSF



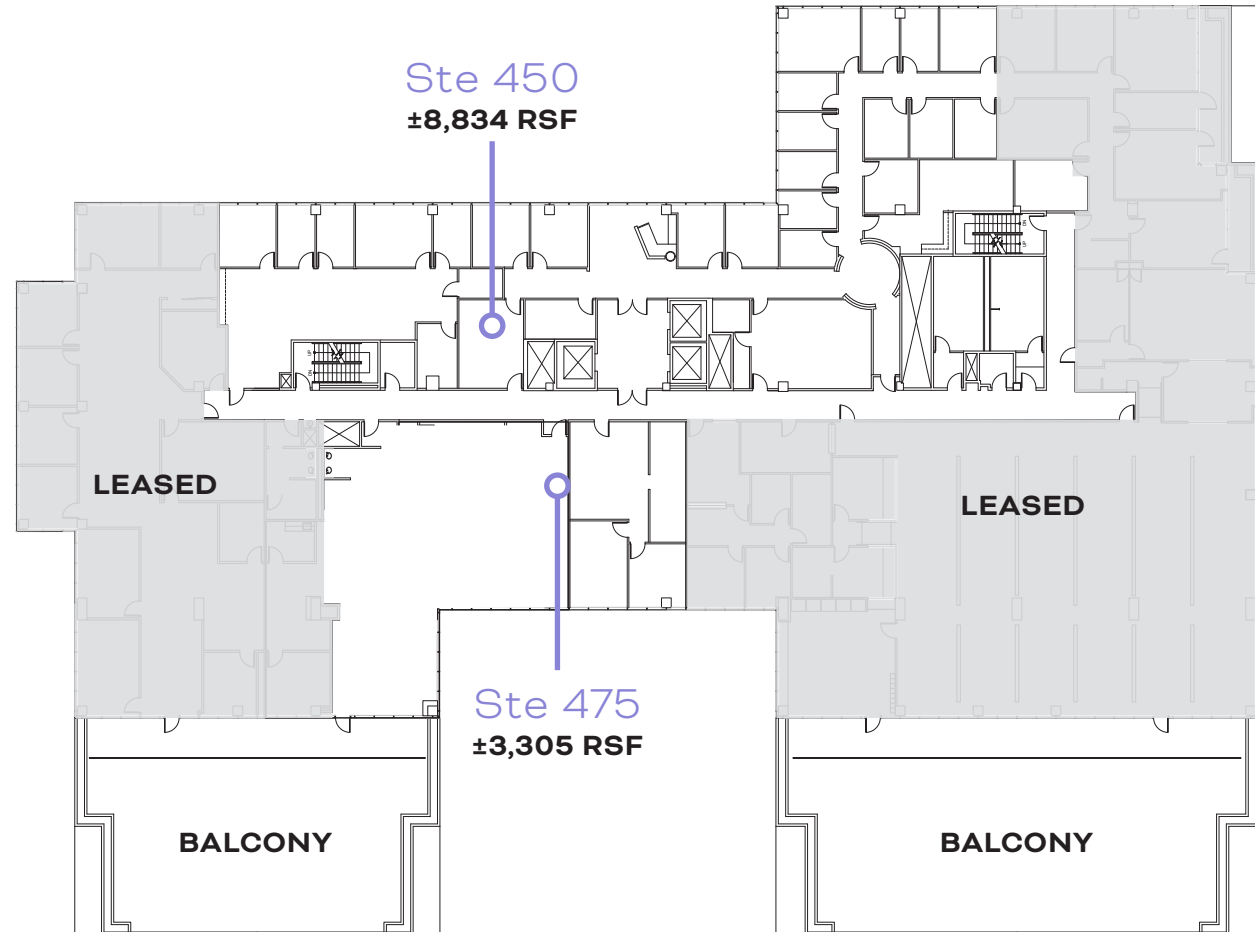


# 15400 SHERMAN WAY

## FOURTH FLOOR

› Suite 450 ±8,834 RSF

› Suite 475 ±3,305 RSF



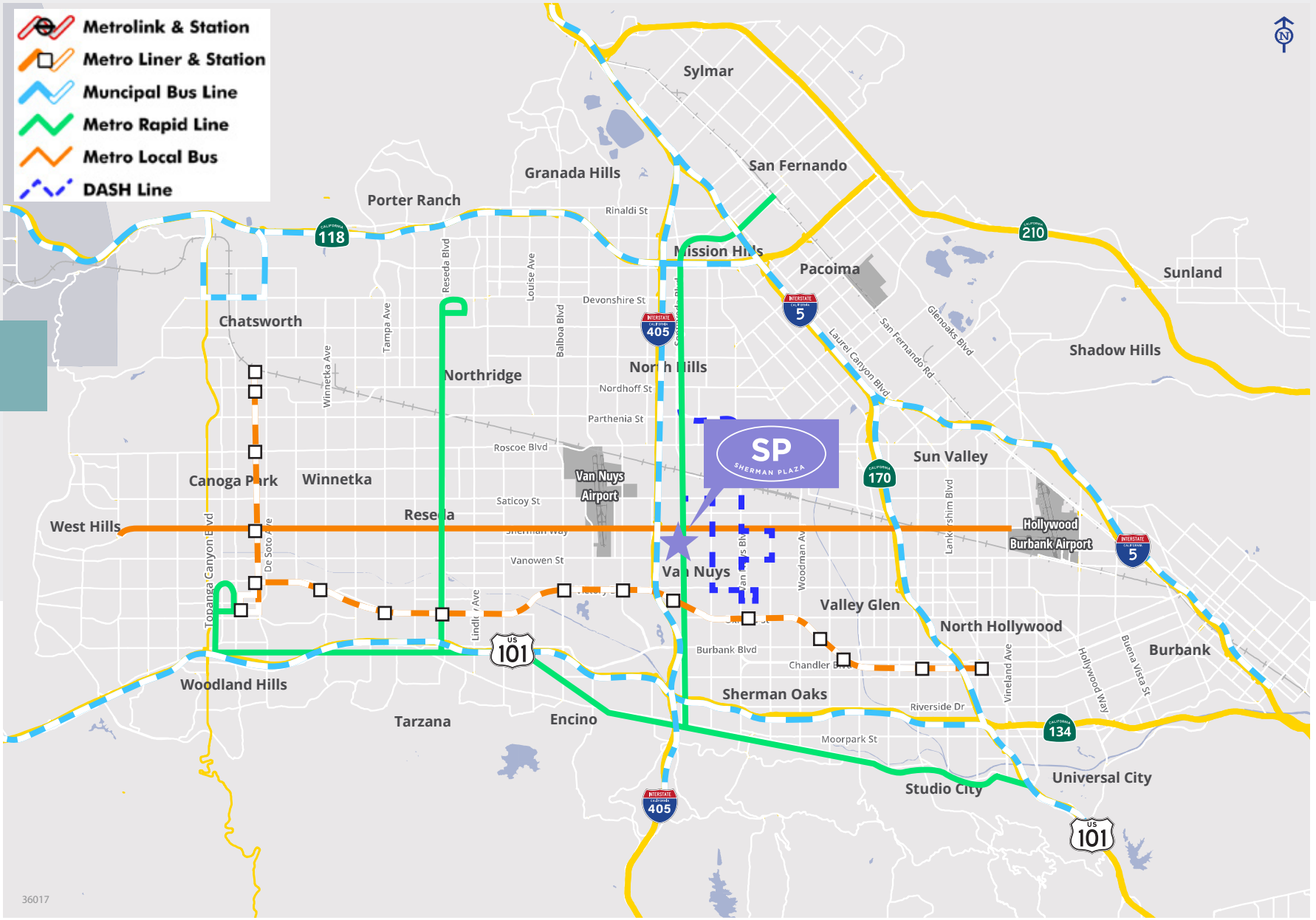
# AMENITIES



# TRANSPORTATION



-  **Metrolink & Station**
-  **Metro Liner & Station**
-  **Municipal Bus Line**
-  **Metro Rapid Line**
-  **Metro Local Bus**
-  **DASH Line**



36017







**15350 & 15400  
SHERMAN WAY  
VAN NUYS, CA 91406**



**CONTACT US**

**David Solomon**  
+1 818 937 4545  
david.solomon@colliers.com  
Lic. No. 01209699

**Matthew Heyn**  
+1 818 334 1860  
matt.heyn@colliers.com  
Lic. No. 01306148

**Caitlin Hoffman**  
+1 818 334 1850  
caitlin.hoffman@colliers.com  
Lic. No. 01935762

This document/email has been prepared by Colliers for advertising and general information only. Colliers makes no guarantees, representations or warranties of any kind, expressed or implied, regarding the information including, but not limited to, warranties of content, accuracy and reliability. Any interested party should undertake their own inquiries as to the accuracy of the information. Colliers excludes unequivocally all inferred or implied terms, conditions and warranties arising out of this document and excludes all liability for loss and damages arising there from. This publication is the copyrighted property of Colliers and /or its licensor(s). © 2024. All rights reserved. This communication is not intended to cause or induce breach of an existing listing agreement. **Colliers International Group Inc.**