



THE PROPERTY

Property is located in a high demographic area with over \$100,000 income in less than a mile and has a high traffic count of over \$40,000 per day!

SUMMARY

Lease Price \$ 17-18 + NNN
Year Built: 2007
Building Size 675 - 1350 SF
Market: Northwest/ Spring

THE PALMS OFFICE CONDOMINIUMS

OFFICE SUITES
AVAILABLE FOR LEASE



FOR MORE INFORMATION, CONTACT AMYTHYST
MANNING AMYTHYST@AIMCB.COM (713) 248-1995



OFFICE SUITES FOR LEASE

FEATURES

Located at the Palms Office
Condominiums
Three office buildings available
Like-new tile, carpeting, and
hardwood flooring throughout
Multiple bathrooms in each unit
Five office spaces in both suites
Energy Efficient- includes very
low electric bills
Waiting area
Work area or conference room
Granite counter tops
12' ceilings and crown molding
Ample parking 6/1000



FOR MORE INFORMATION, CONTACT AMYTHYST
MANNING AMYTHYST@AIMCB.COM (713) 248-1995

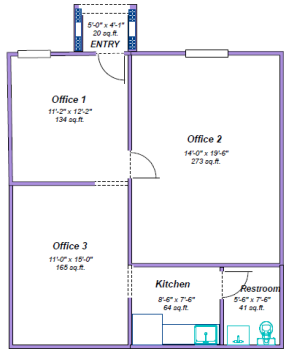


FLOOR PLANS

SUITE D

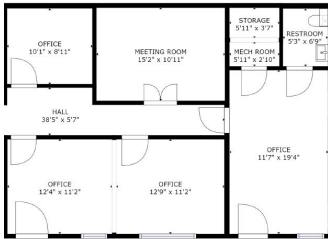


SUITE A



SUITE A

5503 Suite F



5503 Suite D



LOCATION MAP

LOCATION MAP

