



615 Gold SW

Commercial Space

Albuquerque, NM - Downtown
615 Gold Avenue SW



Available

- 2,602 SF | \$2,900/Mo
- 13,972 SF | \$14,000/Mo



Huge Surrounding
Population



Parking Lot
Adjacent



Active Nightlife
Area



HUB Zone
qualified location

Please contact us for leasing opportunities



Demographics

1 Mile

3 mile

5 mile

Population	14,049	96,593	249,517
Med. Income	\$30,407	\$34,357	\$37,683
Day Population	34,957	104,545	196,322



Surroundings Info

- Near City Hall & Courthouse District.
- Free Surface Parking included.
- Locally owned and managed.
- A.R.T stop across the street.

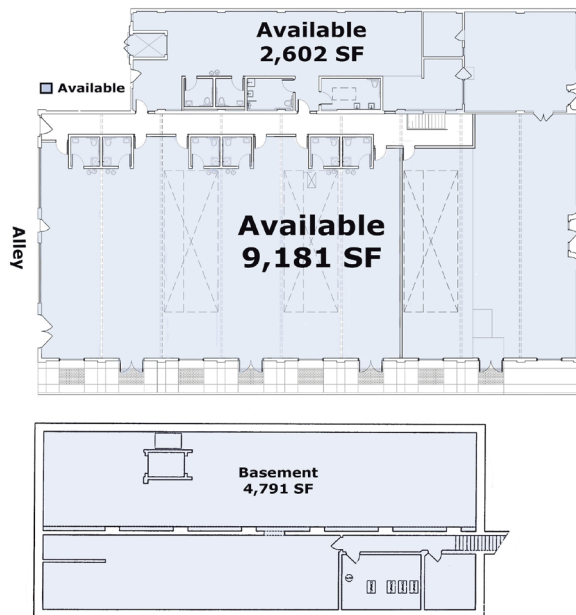


Contact

• Brighton Pope
• 505.884.3578
• Brighton.Pope@PetersonProperties.net

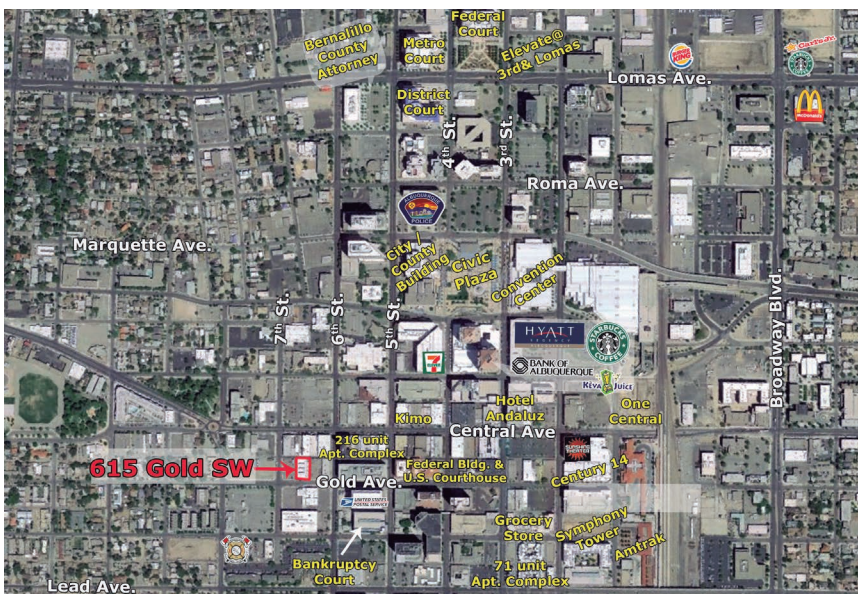
• PetersonProperties.net
• /petersonpropertiesllc
• /petersonpropertiesllc
• /peterson.properties

Site Plan



Please contact us for leasing opportunities

Aerial Map



615 Gold Ave SW Albuquerque, NM



Contact us

 Brighton Pope |
  505.884.3578 |
  Brighton.Pope@PetersonProperties.net

