

# CREEKSIDE RETAIL

15325 Old Town Dr, Parkville, Missouri 64152



**Michael Meier, Principal**

Aristocrat Realty

913.271.7656

[mmeier@aristocrat-realty.com](mailto:mmeier@aristocrat-realty.com)



# CREEKSIDE RETAIL

## PROPERTY INFORMATION

Call for Rate

### PROPERTY ADDRESS

15325 Old Town Dr, Parkville, Missouri 64152

### YEAR BUILT

2022

### RENTABLE AREA

9,175 Sq. Ft.

15325 Old Town Dr  
Parkville, Missouri 64152

### Company Disclaimer

This information has been obtained from sources believed reliable. We have not verified it and make no guarantee, warranty or representation about it. Any projections, opinions, assumptions or estimates used are for example only and do not represent the current or future performance of the property. You and your advisors should conduct a careful, independent investigation of the property to determine to your satisfaction the suitability of the property for your needs. Photos herein are the property of their respective owners and use of these images without the express written consent of the owner is prohibited.



# PROPERTY OVERVIEW

The Creekside Development stands as a cornerstone of Parkville's sustainable growth, creating a vibrant hub of opportunity for residents, businesses, and visitors alike. Spanning nearly 300 acres at the intersection of Interstate 435 and Missouri Highway 45, Creekside integrates residential, mixed-use, commercial, and industrial developments, with a current investment exceeding \$200 million. Included in the development:

Residential:

- 148 single-family homes
- 272 townhomes
- 416 apartments

Commercial and Public Amenities:

- 184,700 sq. ft. of retail and restaurant space
- 38,000 sq. ft. of green space with walking trails

Sports and Hospitality:

- 6 tournament-quality youth baseball fields
- Hotel

Industrial Growth:

- A 50-acre industrial park

Spaces Available:

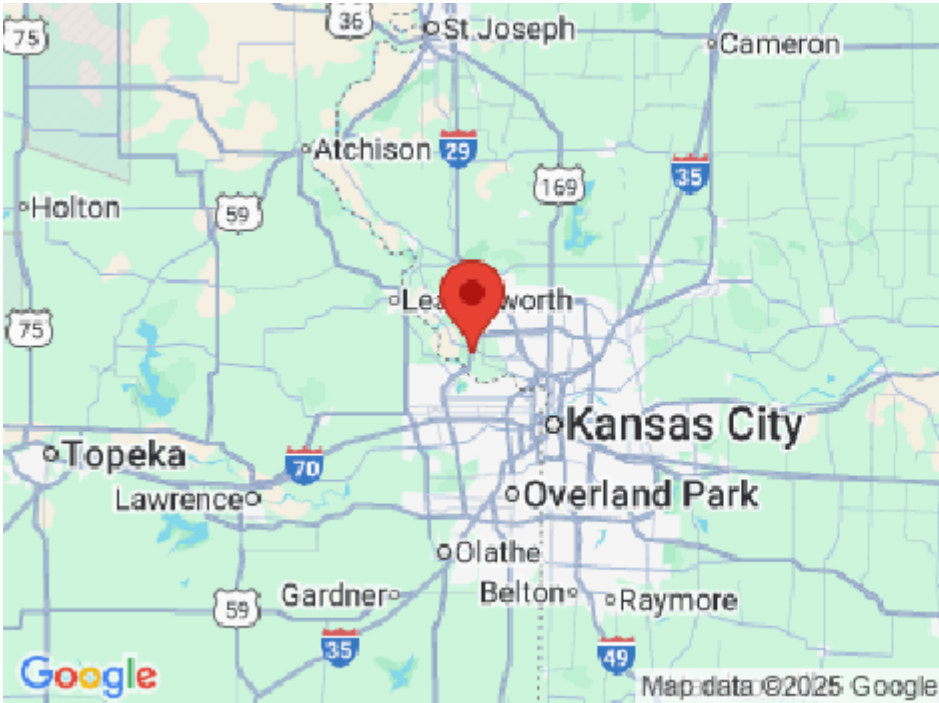
**Suite 118 - 3,137 SF** - Turn-key brewery spec suite. Includes excellent condition brewery equipment, bar tops, patio seating, and is situated in the prime corner space.

**Suite 110-112 - 3,538 SF** - Stunning space that have been white boxed and primed for it's future tenants build out. this space can be subdivided into two smaller configurations.

**Suite 106 - 2,518 SF**- Stunning space that have been white boxed and primed for it's future tenants build out.



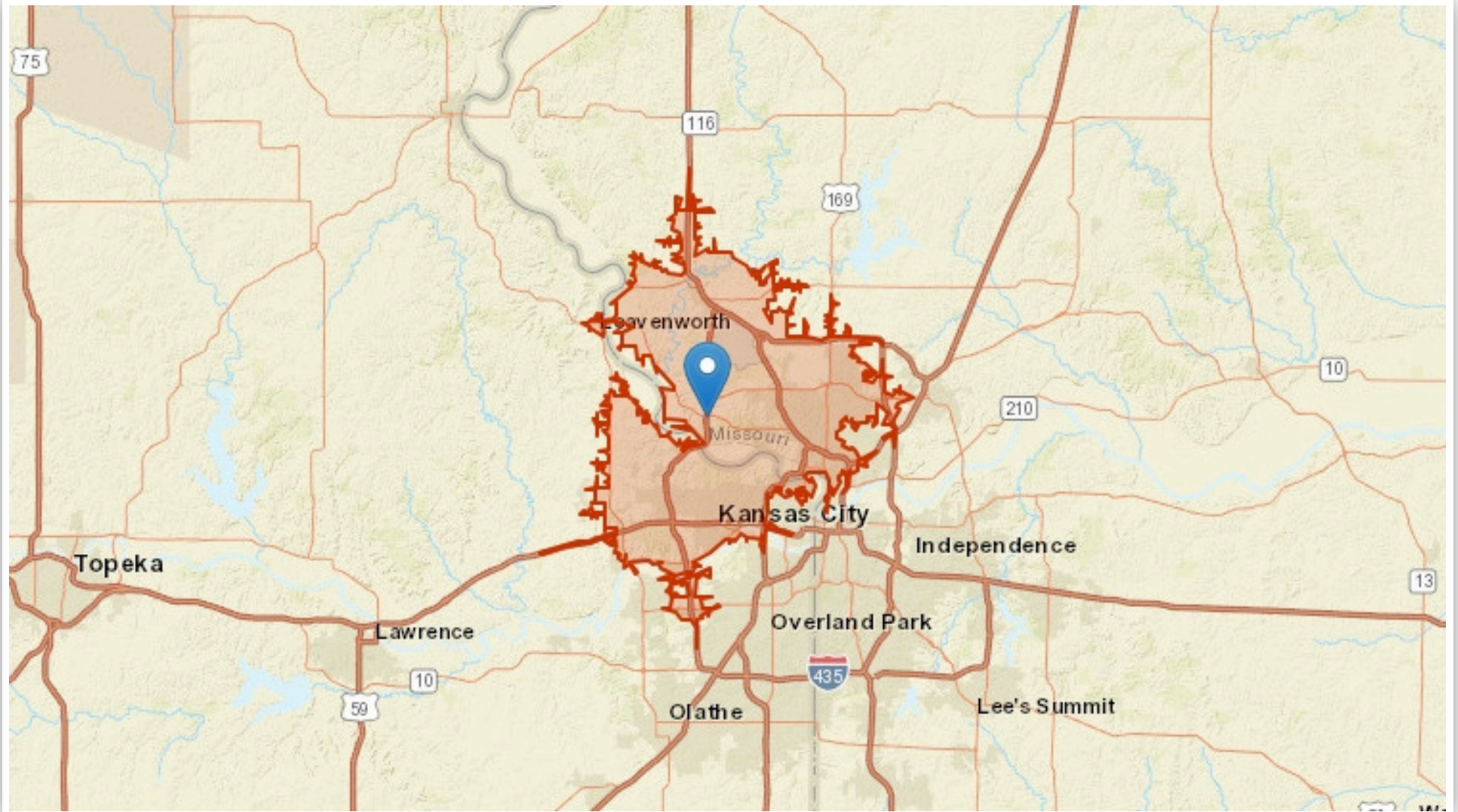
# AREA LOCATION MAP



**CREEKSIDE RETAIL**  
15325 Old Town Dr, Parkville, Missouri, 64152



## LOCATION/STUDY AREA MAP (DRIVE TIME: 20 MINUTES)



### **CREEKSIDE RETAIL** 15325 Old Town Dr, Parkville, Missouri, 64152



# PROPERTY PHOTOS



## CREEKSIDE RETAIL

15325 Old Town Dr, Parkville, Missouri 64152





# PROPERTY PHOTOS



## CREEKSIDE RETAIL

15325 Old Town Dr, Parkville, Missouri 64152



# PROPERTY PHOTOS



## CREEKSIDE RETAIL

15325 Old Town Dr, Parkville, Missouri 64152





## PROPERTY PHOTOS



# CREEKSIDE RETAIL

15325 Old Town Dr, Parkville, Missouri 64152



# PROPERTY PHOTOS

Suite 118



Suite 118



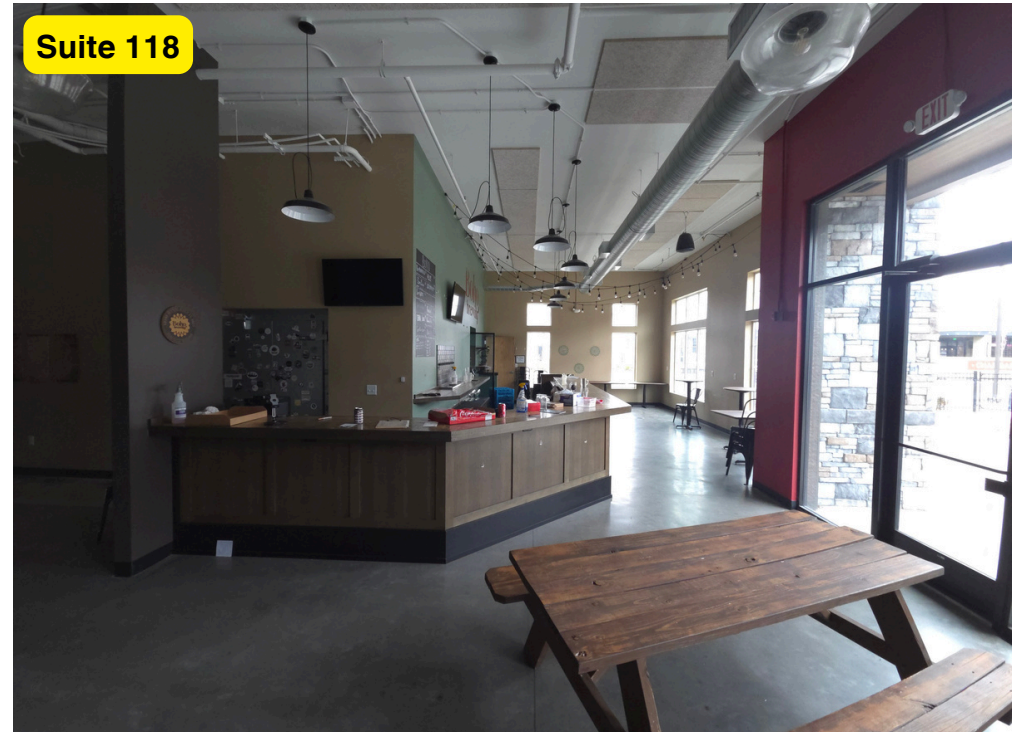
## CREEKSIDE RETAIL

15325 Old Town Dr, Parkville, Missouri 64152





# PROPERTY PHOTOS



## CREEKSIDE RETAIL

15325 Old Town Dr, Parkville, Missouri 64152



# PROPERTY PHOTOS



## CREEKSIDE RETAIL

15325 Old Town Dr, Parkville, Missouri 64152





# PROPERTY PHOTOS

Suite 118



Suite 118



## CREEKSIDERETAIL

15325 Old Town Dr, Parkville, Missouri 64152

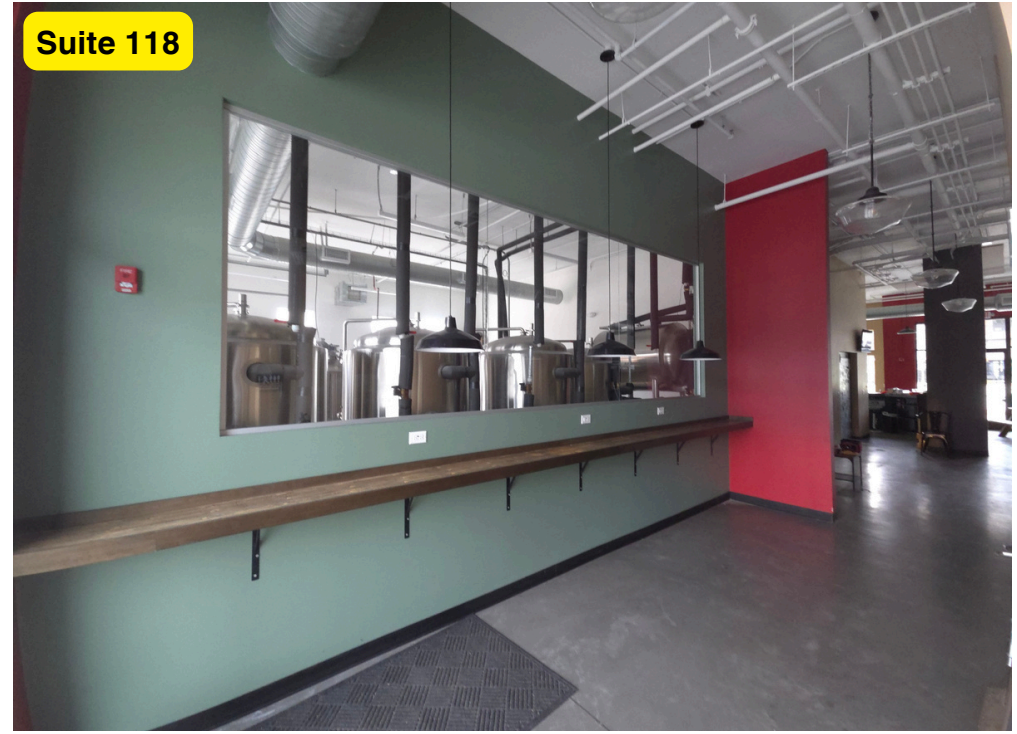


# PROPERTY PHOTOS

Suite 118



Suite 118



## CREEKSIDE RETAIL

15325 Old Town Dr, Parkville, Missouri 64152



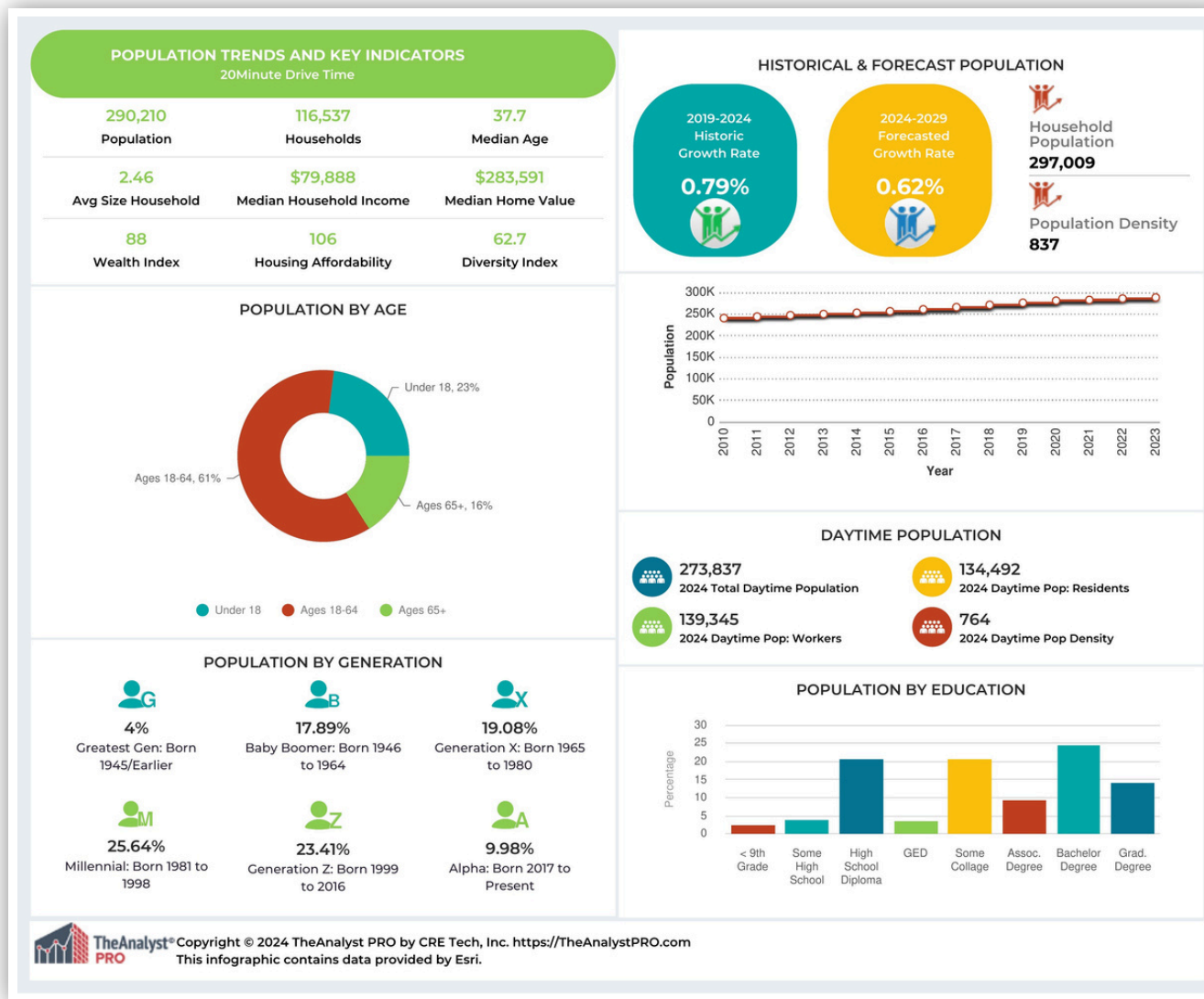


# AERIAL ANNOTATION MAP



**CREEKSIDE RETAIL**  
15325 Old Town Dr, Parkville, Missouri, 64152

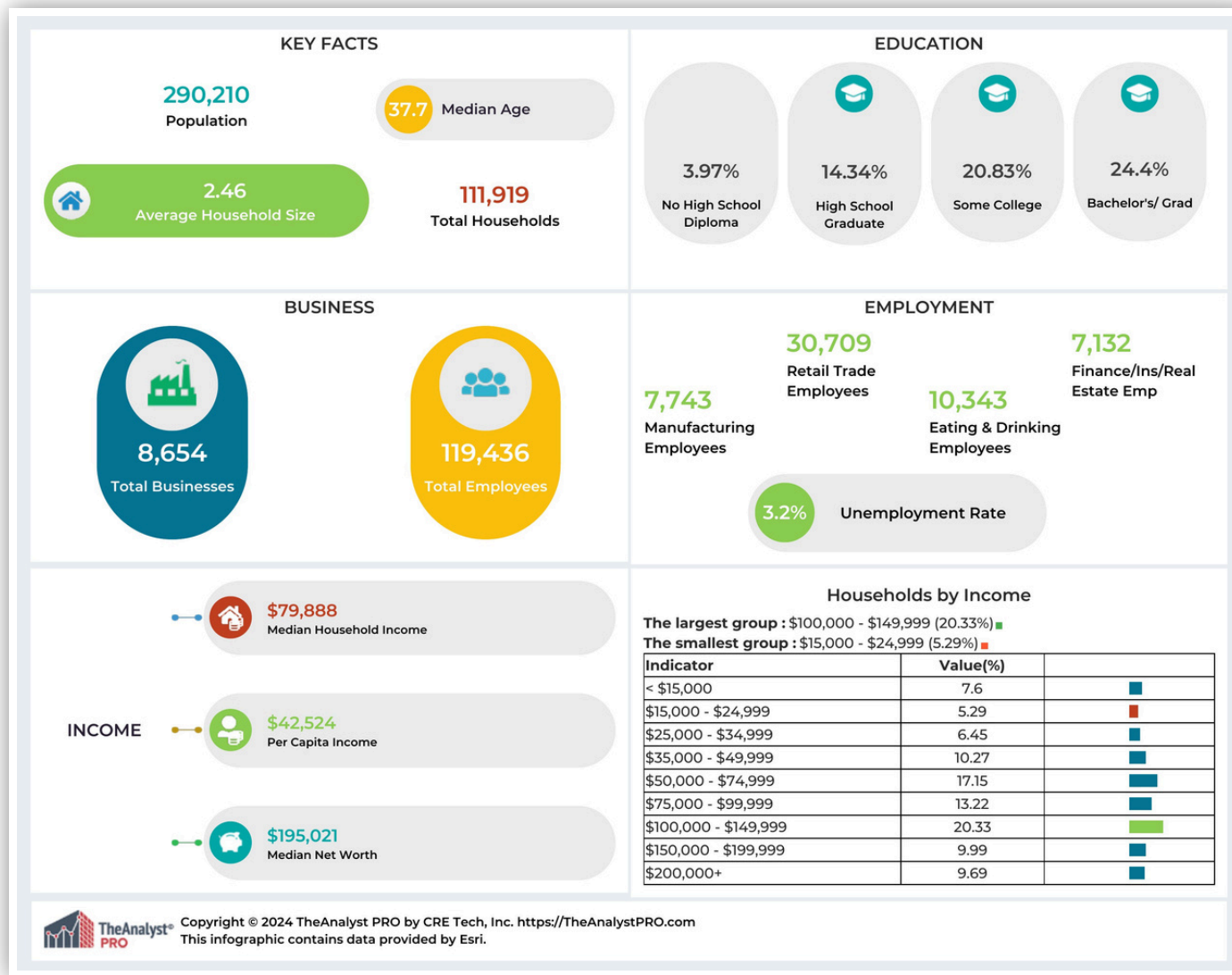
# INFOGRAPHIC: POPULATION TRENDS (DRIVE TIME: 20 MINUTES)



**CREEKSIDE RETAIL**  
15325 Old Town Dr, Parkville, Missouri, 64152



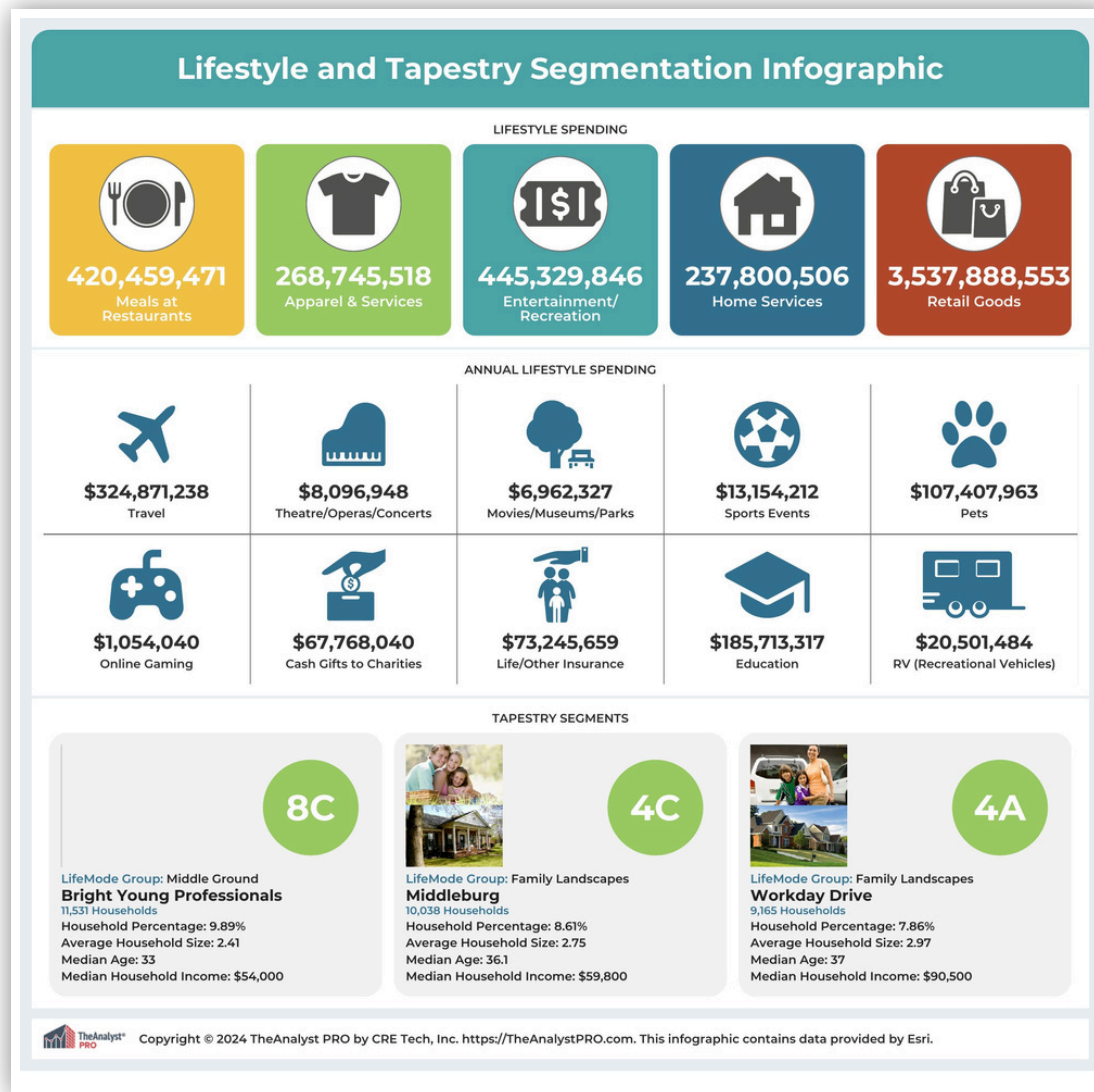
# INFOGRAPHIC: KEY FACTS (DRIVE TIME: 20 MINUTES)



**CREEKSIDE RETAIL**  
15325 Old Town Dr, Parkville, Missouri, 64152



# INFOGRAPHIC: LIFESTYLE / TAPESTRY (DRIVE TIME: 20 MINUTES)



**CREEKSIDE RETAIL**  
15325 Old Town Dr, Parkville, Missouri, 64152



# CONTACT



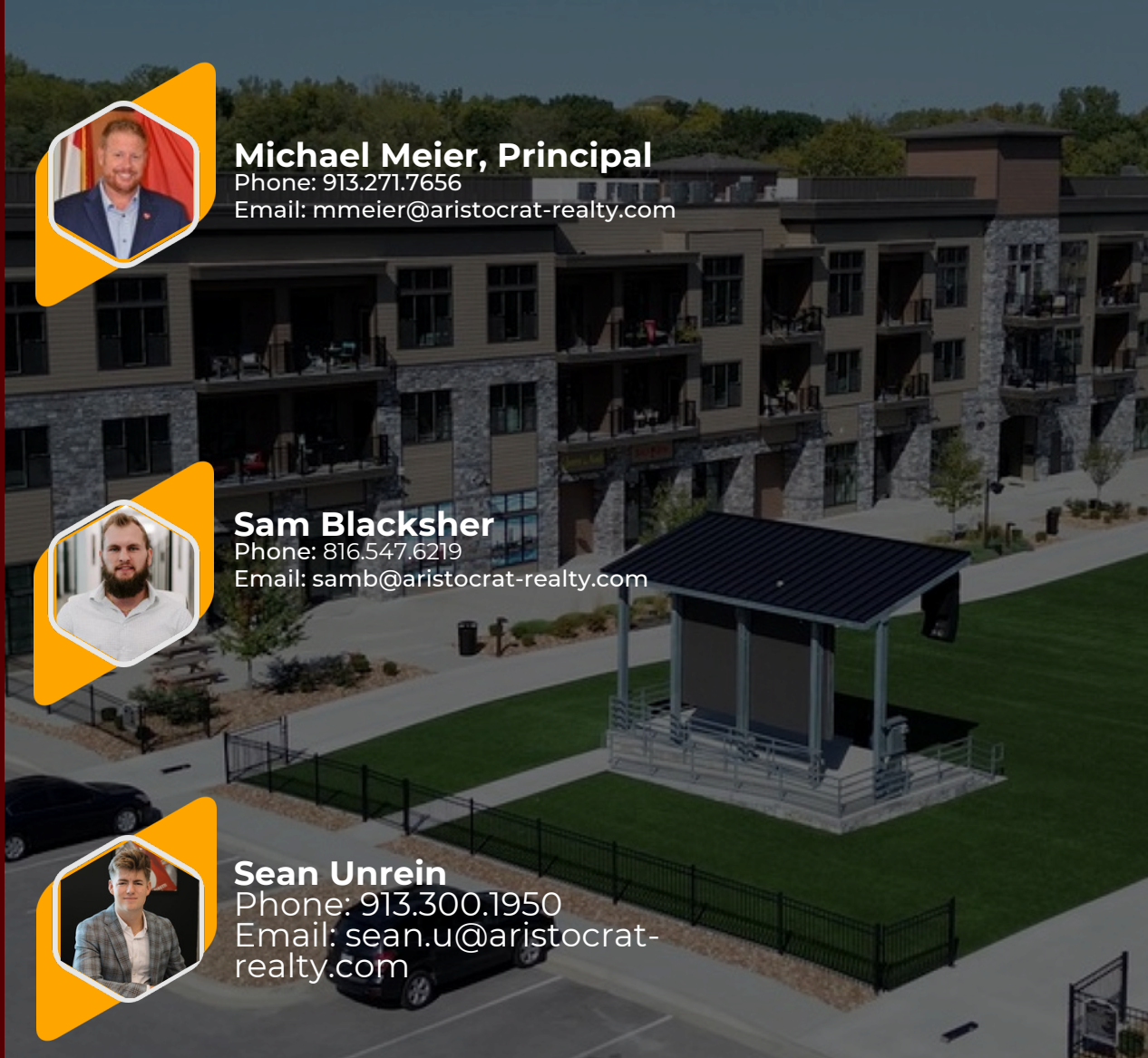
**Michael Meier, Principal**  
Phone: 913.271.7656  
Email: mmeier@aristocrat-realty.com



**Sam Blacksher**  
Phone: 816.547.6219  
Email: samb@aristocrat-realty.com



**Sean Unrein**  
Phone: 913.300.1950  
Email: sean.u@aristocrat-realty.com



**CREEKSIDE  
RETAIL**  
15325 Old Town Dr  
Parkville, Missouri  
64152



913.271.7656



mmeier@aristocrat-realty.com



12200N Ambassador Dr  
Kansas City, MO 64163 United States