

GARLAND BUILDING

Available Full Floors:

11-4,660 RSF 6-4,660 RSF
8-4,660 RSF 5-4,660 RSF 3-4,547 RSF
7-4,660 RSF 4-4,662 RSF

740 S Broadway
Los Angeles, CA 90014

Creative Full-Floor Office Spaces on Historic Broadway in DTLA, above the Globe Theatre



HIGHLIGHTS

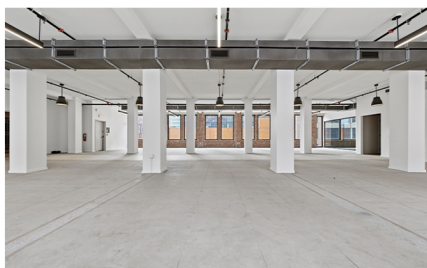
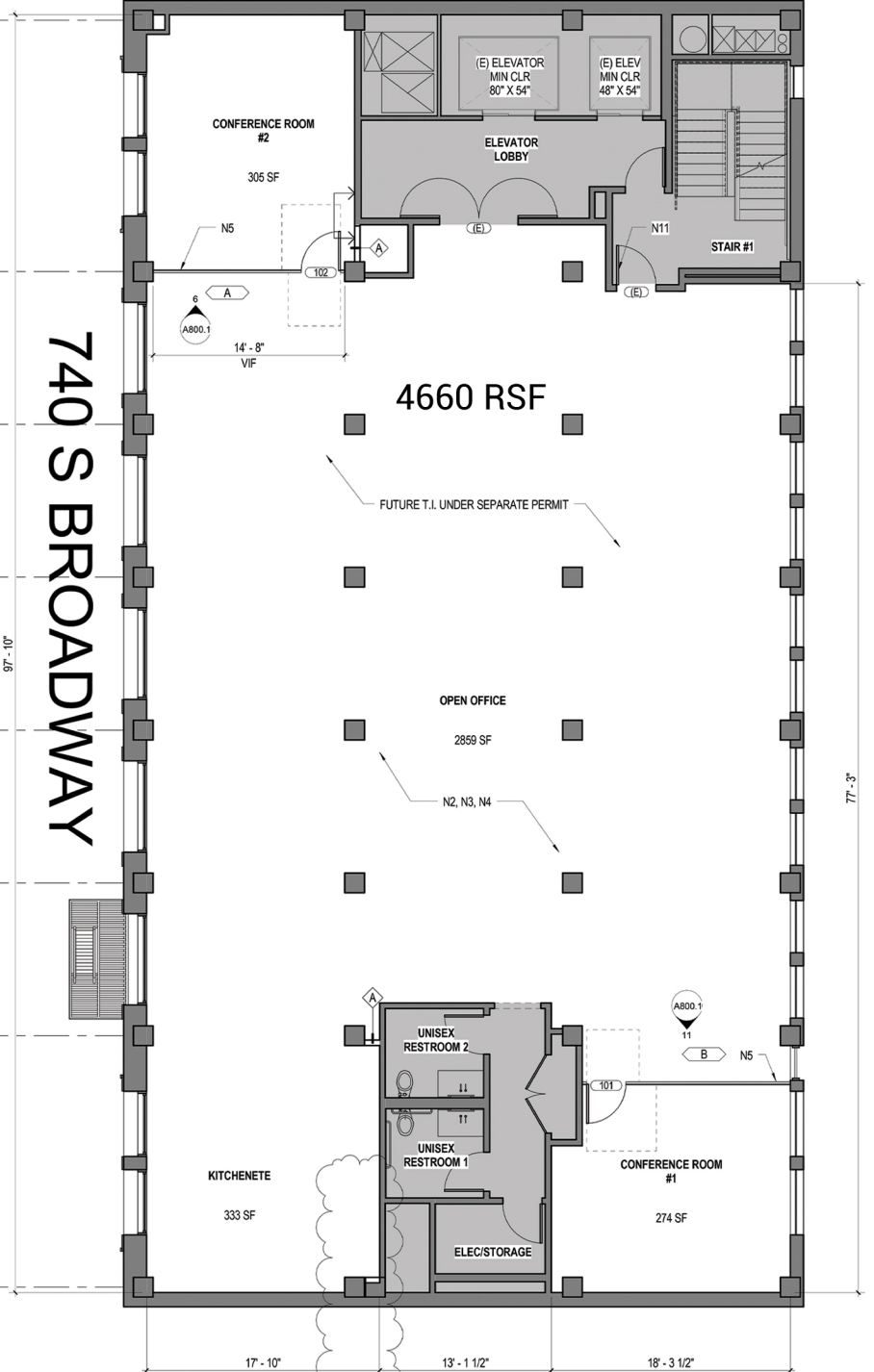
- Full-floors from 4,547-4,662 RSF
- Creative-ready, flexible open layouts
- New lighting
- New HVAC – each floor has its own unit, making 24/7 operations possible
- Two new restrooms on each floor
- Authentic historic character with modern usability
- Restored historic façade
- Exposed Brick
- Bright full-floor plates with strong natural light
- Upgraded data and power infrastructure
- Excellent proximity to the Metro, parking, and amenities
- Operable historic windows
- Excellent walkability to restaurants, retail, and transit
- Ideal for start-ups, creative, tech, media, design, fashion and professional services

RENTAL RATE Starting at **\$1.15** per RSF /month, Net Electricity & Janitorial



Designed by Morgan, Walls & Morgan and completed in 1914, the Garland Building is a classic Beaux-Arts landmark located in the center of the Broadway Theater District. Featuring restored historic detailing, recently updated building systems, and flexible full-floor opportunities, the Garland Building blends early Los Angeles architecture

Hal Bastian 213-440-0242
Leasing Contact hal@halbastian.com
CA DRE# 00854666



The information provided herein has been obtained from sources believed reliable, but has not been verified, and we make no guarantee, warranty or representations about it. Estimates, assumptions, and opinions, if any, are used only for example and do not represent current or future performance. You and your advisors should conduct independent investigation of the property to determine the suitability of the property for your needs.