

FOR LEASE

EVERGLADES PROFESSIONAL OFFICES

3765 - 3785 AIRPORT-PULLING RD N, NAPLES, FL 34105



John Paulich IV
Senior Advisor
239.334.3040 x 212
John.Paulich@TrinityCRE.com

Doug Olson
Partner

Matt Fredrickson
Partner

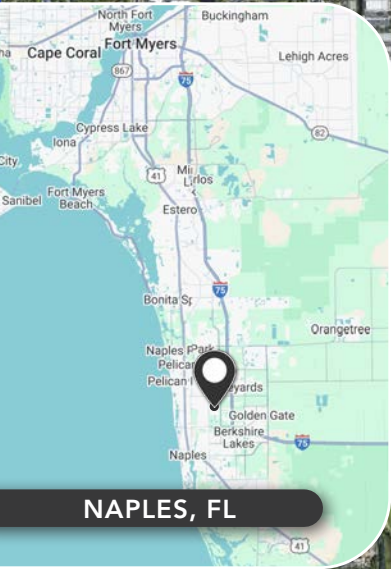
Gianna Grigaliunas
Associate





EVERGLADES PROFESSIONAL OFFICES

3765 - 3785 AIRPORT-PULLING RD N, NAPLES, FL



2025 DEMOGRAPHICS

3765 AIRPORT-PULLING RD



AVERAGE H.H INCOME

1 MILE

\$203,451

3 MILE

\$206,895

5 MILE

\$175,995



POPULATION

4,594

50,839

147,606



EMPLOYMENT DENSITY

1,708

51,227

105,752

PROPERTY DETAILS

PRICE

Call for Details

AVAILABLE

Unit C: 1,592± SF
Unit 100: 2,475± SF

ZONING

Commercial

LOCATION

This subject site is located on the west side of Airport-Pulling Rd just north of Bailey Ln in Naples, FL



TrinityCRE.com

© Trinity Commercial Group

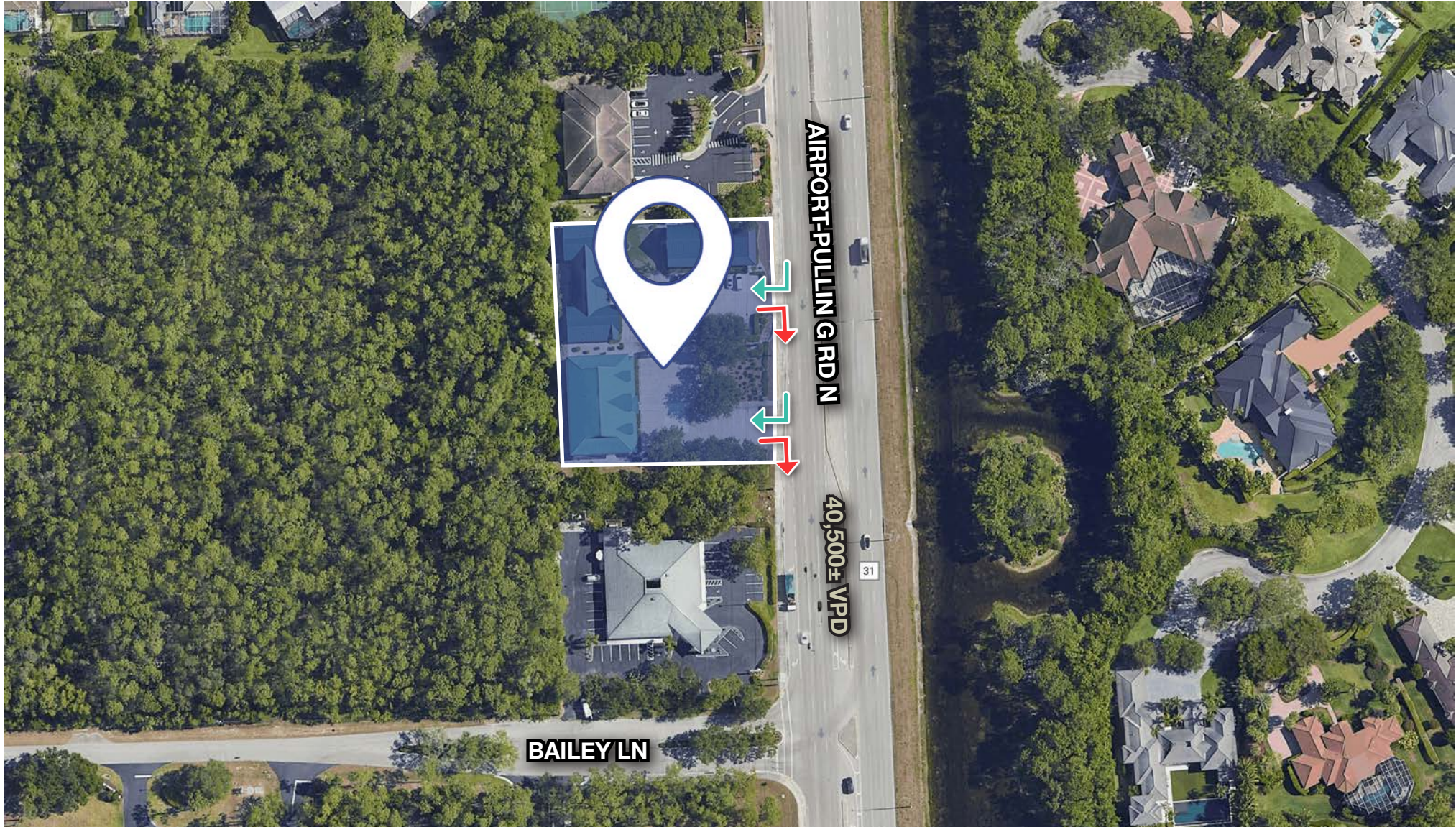
This information is considered accurate, but not guaranteed.

Experts in the Market
Partners in Your Success

MEMBER OF:
SITE SOURCE
RETAIL BROKER NETWORK

EVERGLADES PROFESSIONAL OFFICES

3765 - 3785 AIRPORT-PULLING RD N, NAPLES, FL



John Paulich IV
Senior Advisor
239.334.3040 x 212
John.Paulich@TrinityCRE.com

Doug Olson
Partner

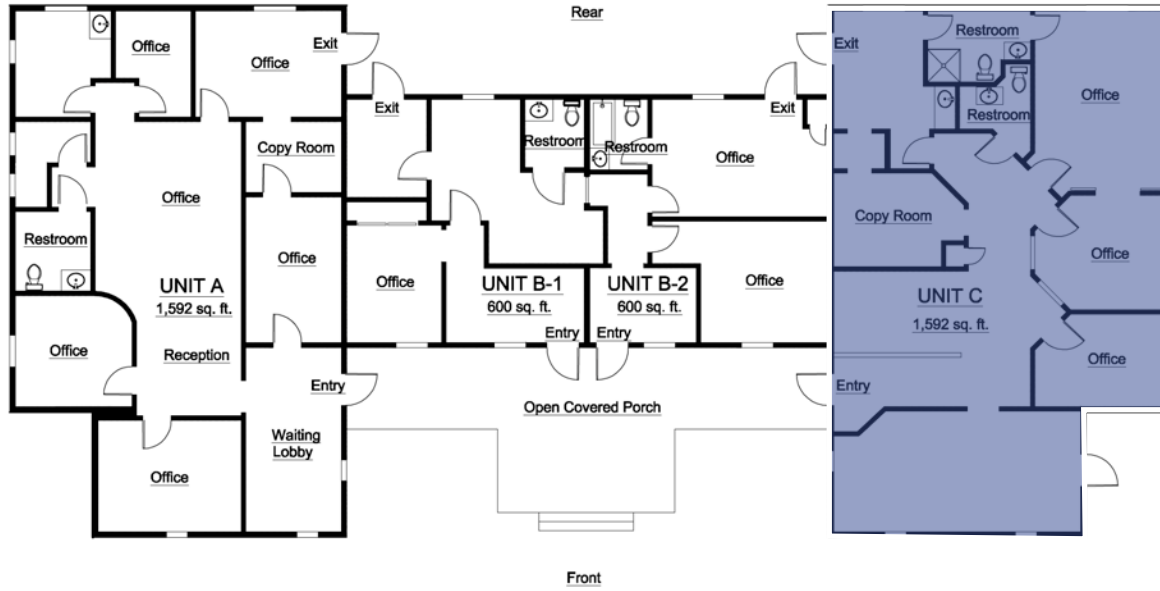
Matt Fredrickson
Partner

Gianna Grigaliunas
Associate

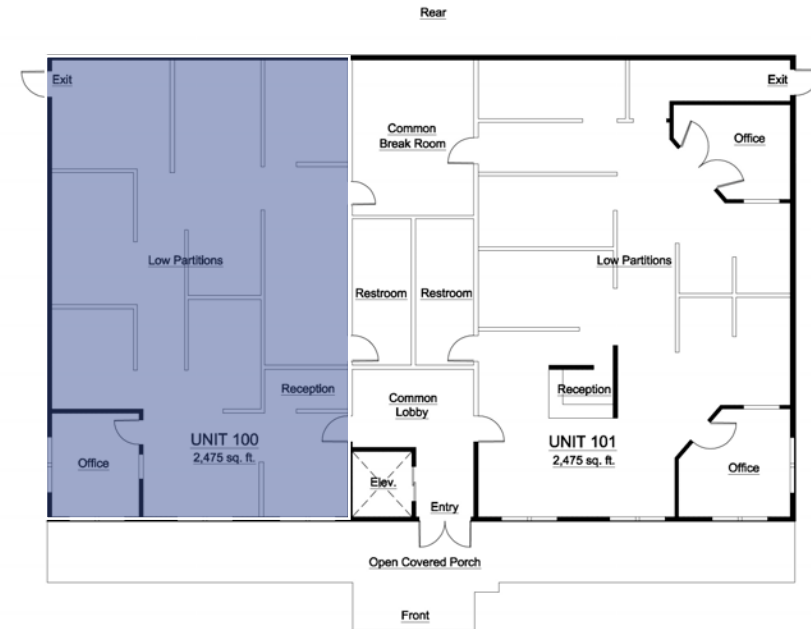


EVERGLADES PROFESSIONAL OFFICES

3765 - 3785 AIRPORT-PULLING RD N, NAPLES, FL



UNIT C



UNIT 100



John Paulich IV
Senior Advisor
239.334.3040 x 212
John.Paulich@TrinityCRE.com

Doug Olson
Partner

Matt Fredrickson
Partner

Gianna Grigaliunas
Associate



TrinityCRE.com