

2460 – 2470 COMMERCIAL DRIVE  
AUBURN HILLS, MICHIGAN



**SIGNATURE  
ASSOCIATES**  
KNOW SIGNATURE | KNOW RESULTS

**INDUSTRIAL FOR LEASE**  
**17,792 Square Feet Available**



## PROPERTY FEATURES

- 17,792 square feet available
- 5,612 square feet office
- 20' – 23'6" clear height
- (2) 12' x 14' grade level doors
- Contemporary image
- Potentially divisible – 10,299 sq. ft. or 7,493 sq. ft.
- High density fire suppression
- (2) Siemens car chargers
- Signage on I-75 available at extra cost
- Fenced yard potentially available
- Elevator
- High ceilings in office
- Lease Rate: \$9.95/sq. ft. NNN



For more information, please contact:

**PAUL HOGE**  
(248) 948 0103  
paulhoge@signatureassociates.com

**SIGNATURE ASSOCIATES**  
One Towne Square, Suite 1200  
Southfield, MI 48076  
www.signatureassociates.com

Information is subject to verification and no liability for errors or omissions is assumed. Price is subject to change and listing withdrawal.

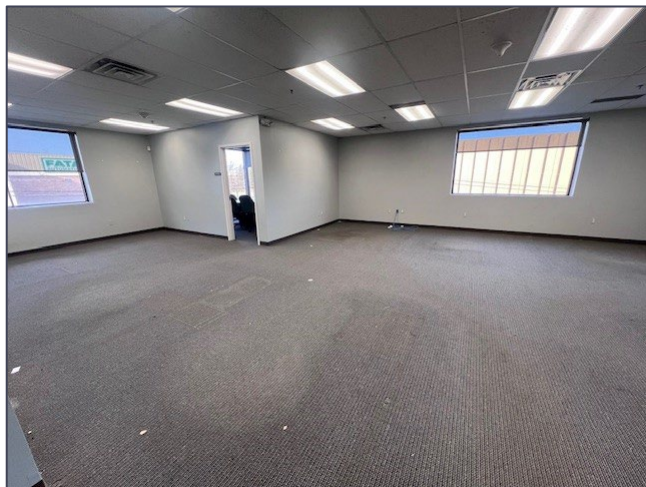


# 2460 – 2470 Commercial Street – Auburn Hills, Michigan

## Industrial For Lease

17,792  
Square Feet  
AVAILABLE

### Interior Photos



For more information, please contact:

**PAUL HOGE**

(248) 948 0103

[paulhoge@signatureassociates.com](mailto:paulhoge@signatureassociates.com)

**SIGNATURE ASSOCIATES**

One Towne Square, Suite 1200

Southfield, MI 48076

[www.signatureassociates.com](http://www.signatureassociates.com)

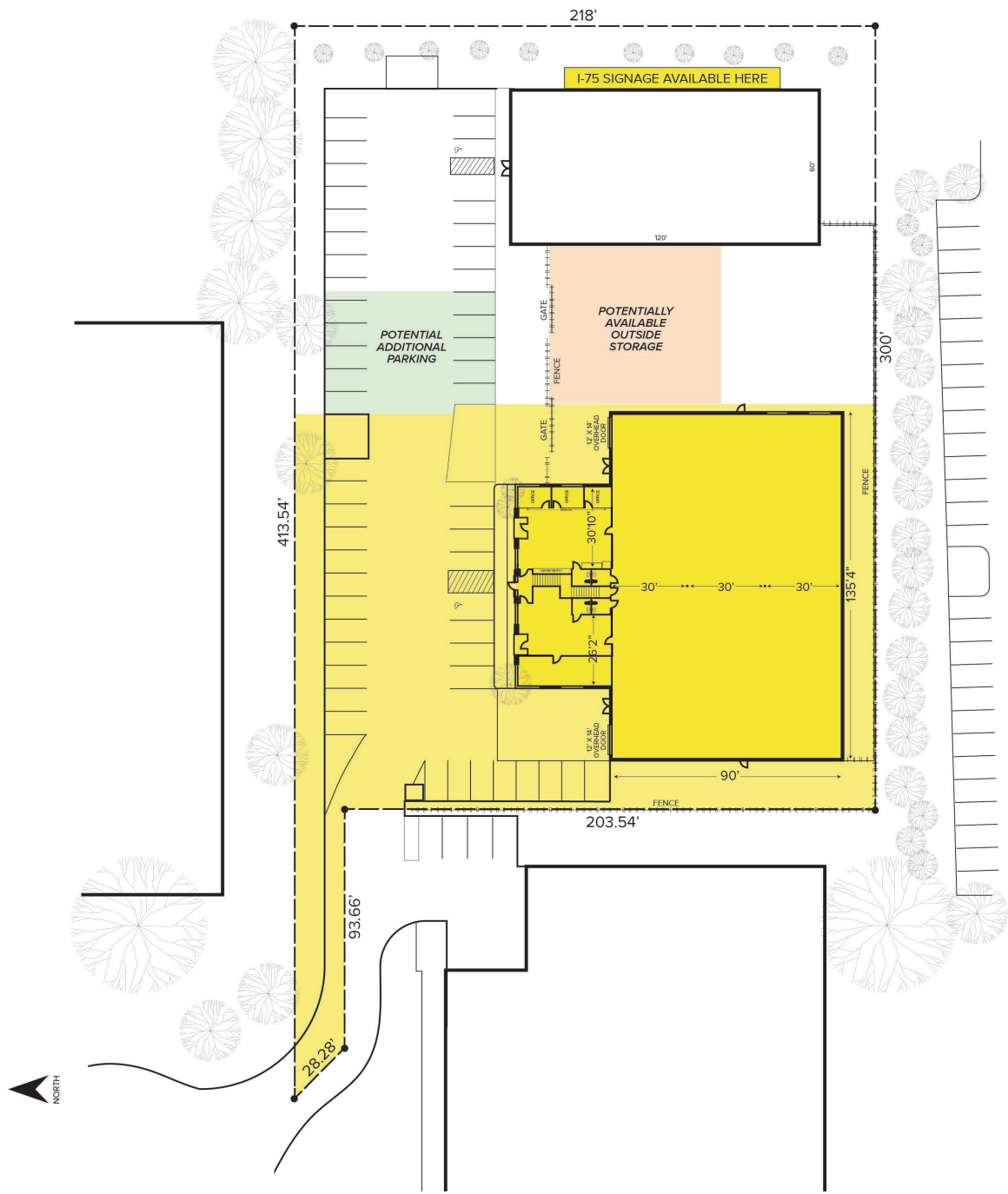
Information is subject to verification and no liability for errors or omissions is assumed. Price is subject to change and listing withdrawal.

2460 – 2470 Commercial Street – Auburn Hills, Michigan  
Industrial For Lease

17,792  
Square Feet  
AVAILABLE

Site Plan

I-75



For more information, please contact:  
**PAUL HOGE**  
(248) 948 0103  
paulhoge@signatureassociates.com

**SIGNATURE ASSOCIATES**  
One Towne Square, Suite 1200  
Southfield, MI 48076  
www.signatureassociates.com

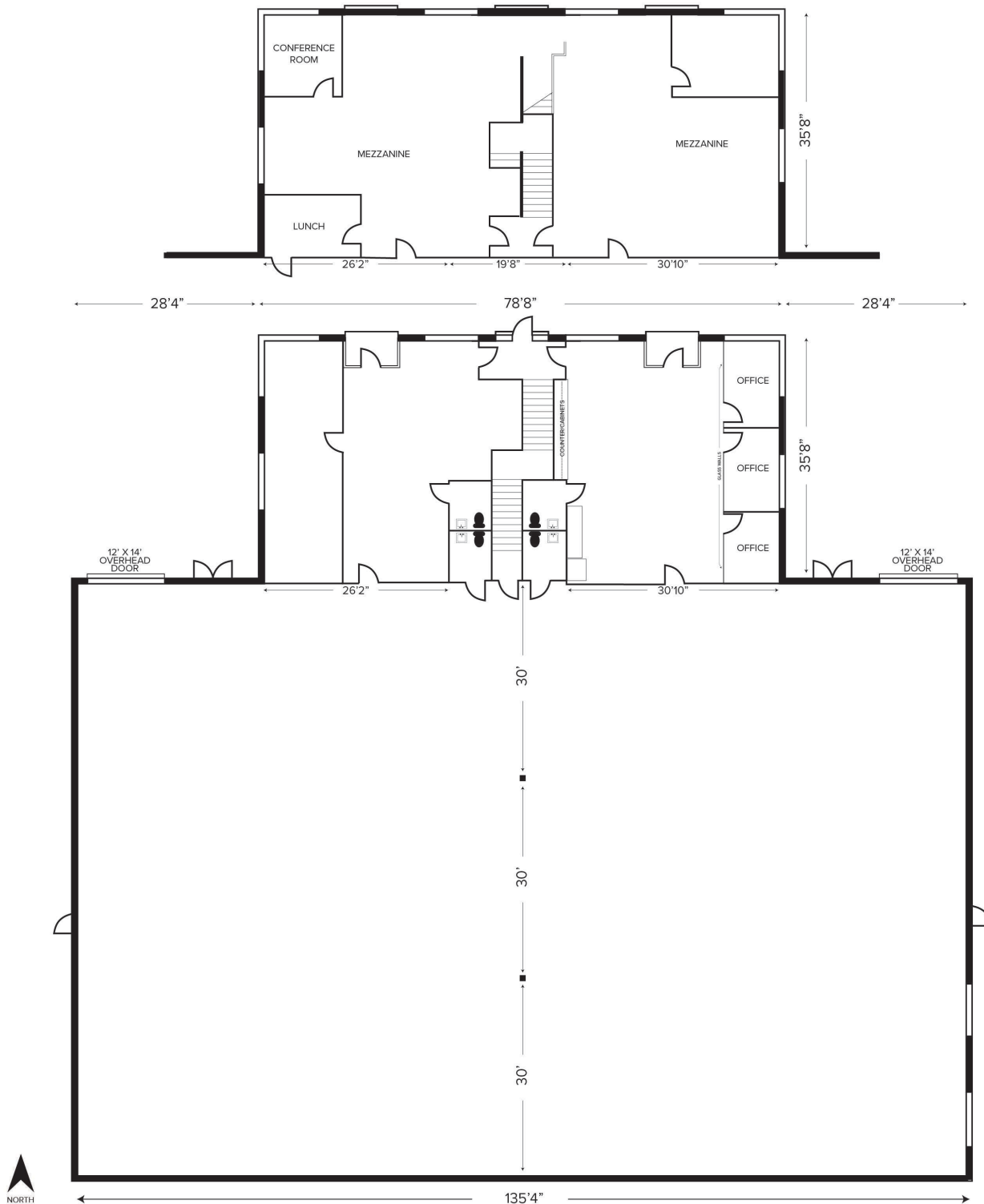
Information is subject to verification and no liability for errors or omissions is assumed. Price is subject to change and listing withdrawal.

# 2460 – 2470 Commercial Street – Auburn Hills, Michigan

## Industrial For Lease

17,792  
Square Feet  
AVAILABLE

### Floor Plan



For more information, please contact:

**PAUL HOGE**  
(248) 948 0103  
paulhoge@signatureassociates.com

**SIGNATURE ASSOCIATES**  
One Towne Square, Suite 1200  
Southfield, MI 48076  
www.signatureassociates.com

Information is subject to verification and no liability for errors or omissions is assumed. Price is subject to change and listing withdrawal.

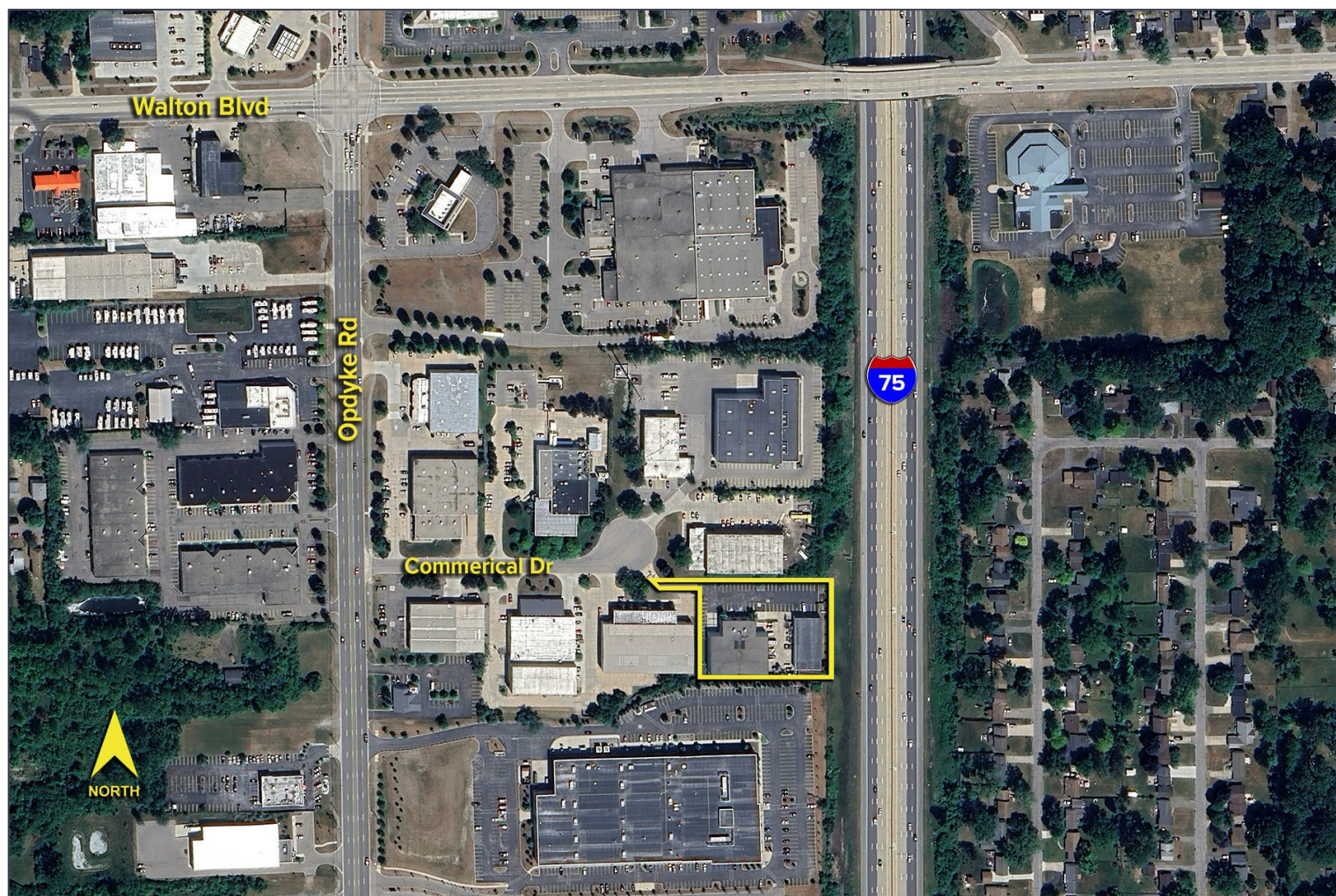


# 2460 – 2470 Commercial Street – Auburn Hills, Michigan

## Industrial For Lease

17,792  
Square Feet  
AVAILABLE

Aerial



For more information, please contact:

**PAUL HOGE**

(248) 948 0103

[paulhoge@signatureassociates.com](mailto:paulhoge@signatureassociates.com)

**SIGNATURE ASSOCIATES**

One Towne Square, Suite 1200

Southfield, MI 48076

[www.signatureassociates.com](http://www.signatureassociates.com)

Information is subject to verification and no liability for errors or omissions is assumed. Price is subject to change and listing withdrawal.