

FOR LEASE

THE BLUFFS

16870 W. BERNARDO DRIVE
SAN DIEGO, CA 92127

David Harper
858.677.5335
david.harper@colliers.com
Lic. No. 00880644

Colliers

THE BLUFFS

16870 W. Bernardo Drive
San Diego, CA 92127

Property Details

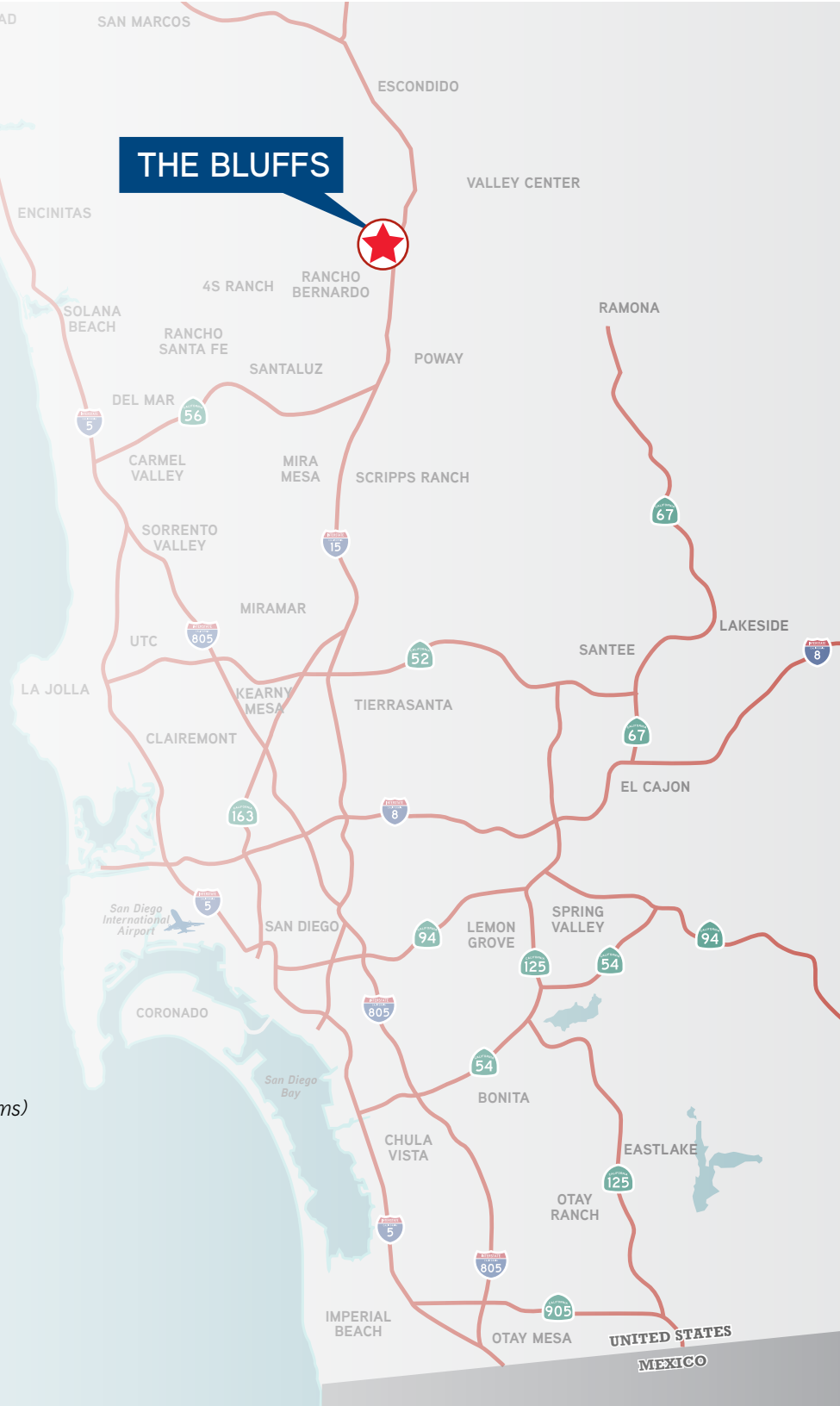
- › 4-story award Winning Class A Office Building (68,708 RSF)
- › Key corner location with immediate access to I-15 and mass transit
- › 4:1 Parking Ratio
- › Corporate neighbors include, Sony, BAE, Hewlett Packard, Northrop Grumman, General Atomics, Cymer, NCR and Chase Mortgage
- › Dramatic Lobby/Building Entrance
- › Close proximity to numerous hotels, restaurants and retail services

Availability

- | | |
|-------------------------------|-------------------------------|
| › Existing As-Built: | › Proposed: |
| › Suite 170: Approx. 1,467 SF | › Suite 200: Approx. 3,038 SF |
| › Suite 200: Approx. 2,224 SF | › Suite 220: Approx. 4,728 SF |
| › Suite 220: Approx. 8,291 SF | › Suite 230: Approx. 2,749 SF |
| › Suite 200-220: 8,291 SF | › Suite 220-230: 7,081 SF |
| › Suite 200-230: 10,515 SF | › Suite 200-220: 7,766 SF |
| | › Suite 200-230: 10,515 SF |

Lease Rate: \$3.00-\$3.35/SF, plus electric *(subject to improvements and other lease terms)*

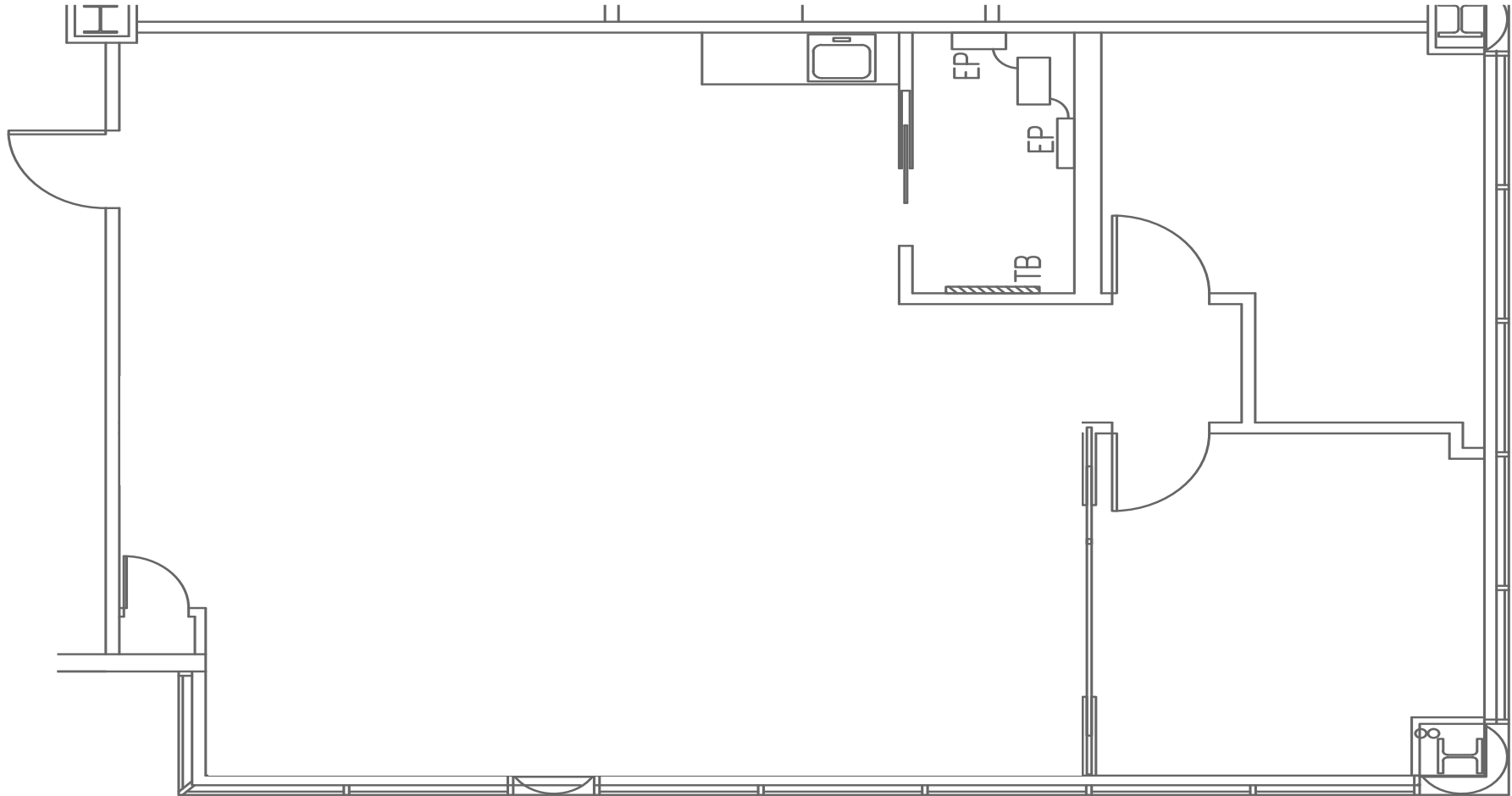
Landlord will consider amortizing creative style improvements for minimum 5 year lease terms.



FLOOR PLAN

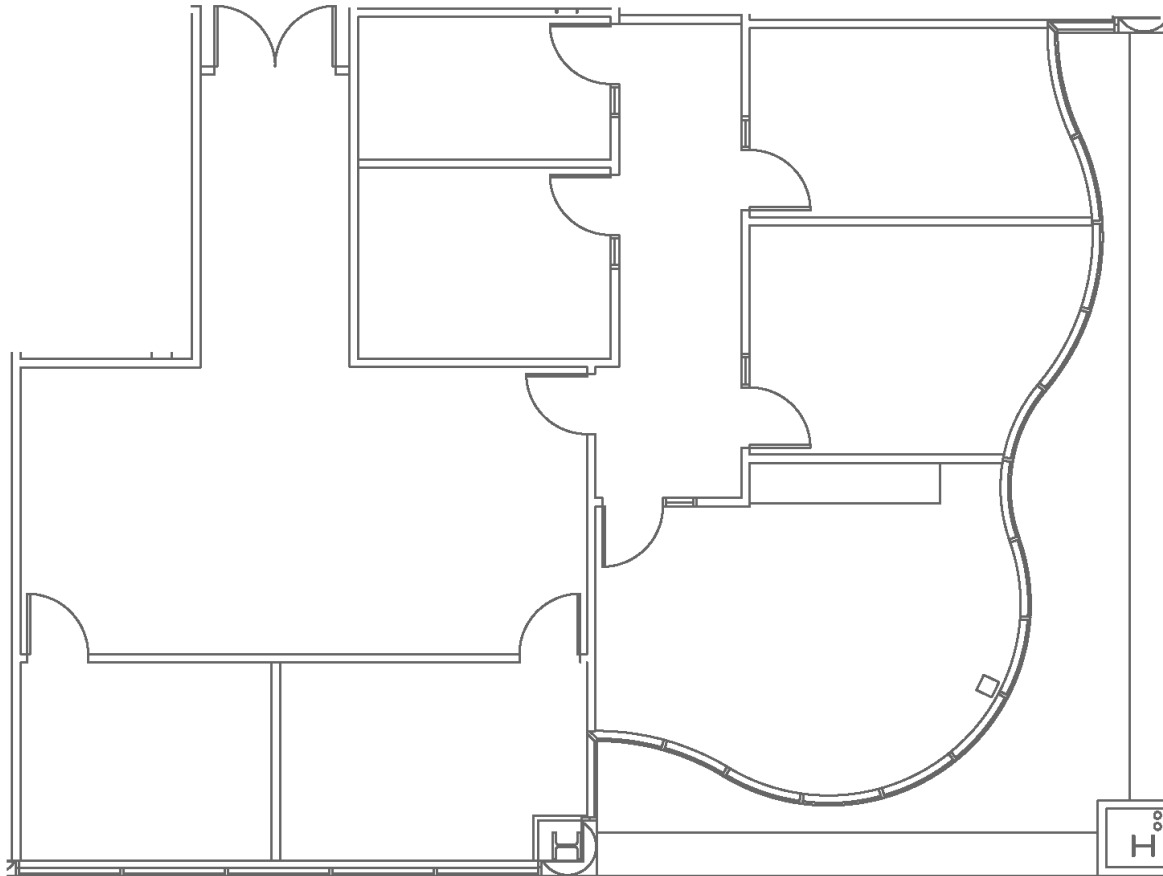
Suite 170
Approximately 1,467 RSF

Amenities: double glass entry off the main lobby, IT/storage, 2 offices on window-line and open office area



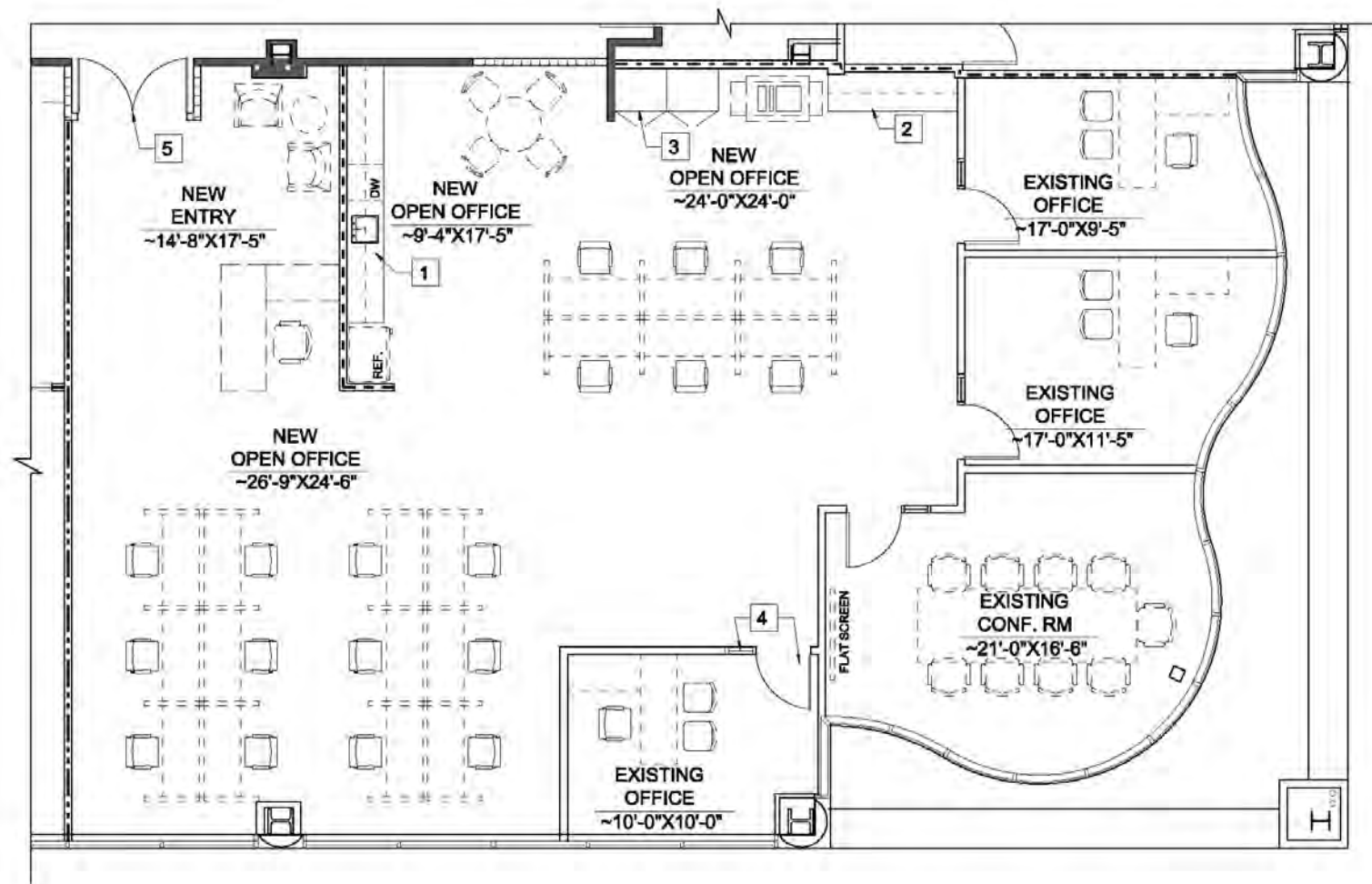
FLOOR PLAN

Suite 200 "As-Built"
Approximately 2,224 SF (available with 30-Days' Notice)



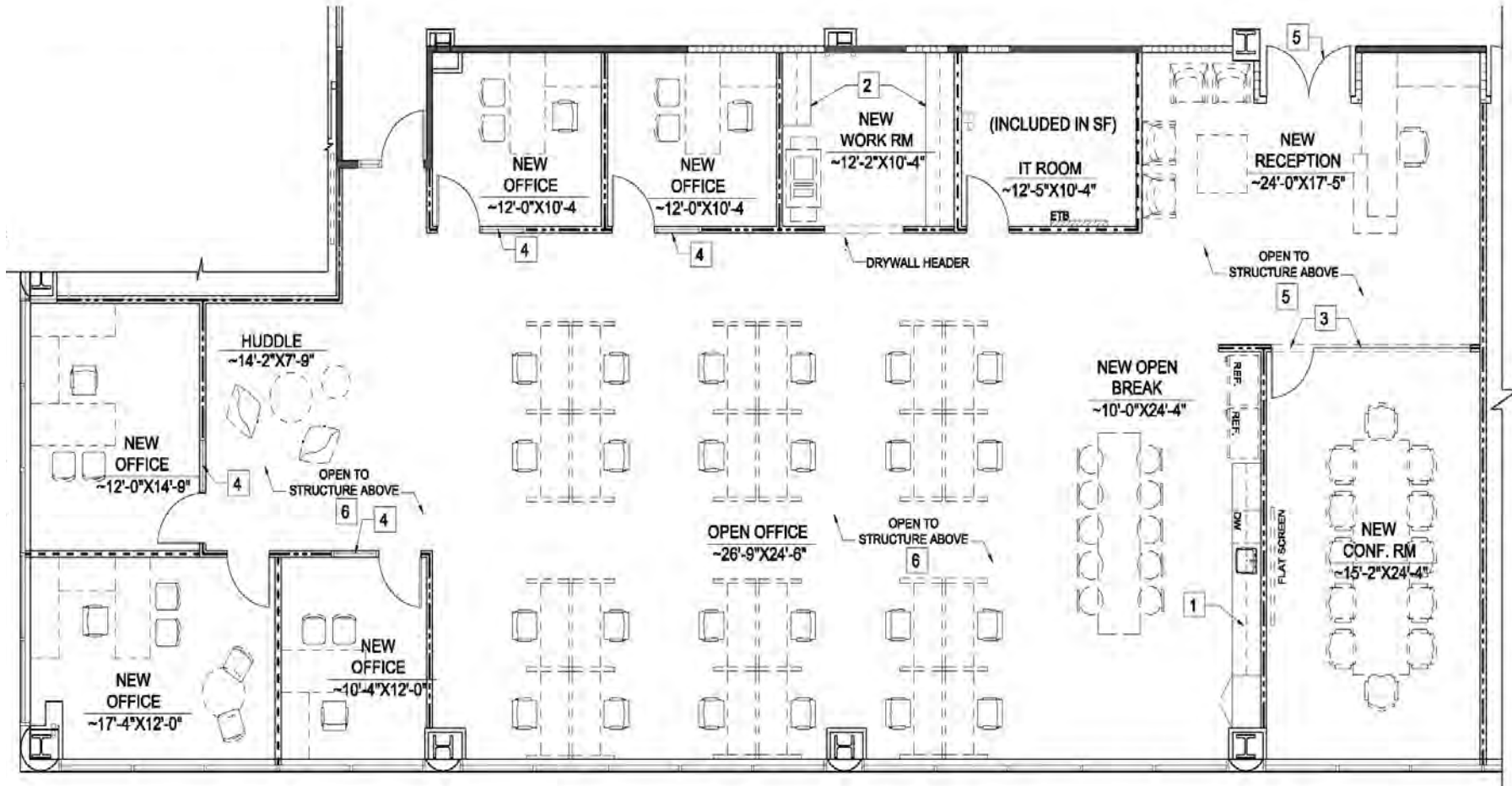
FLOOR PLAN

Suite 200 "Proposed"
Approximately 3,038 SF



FLOOR PLAN

Suite 220 "Proposed"
Approximately 4,728 SF

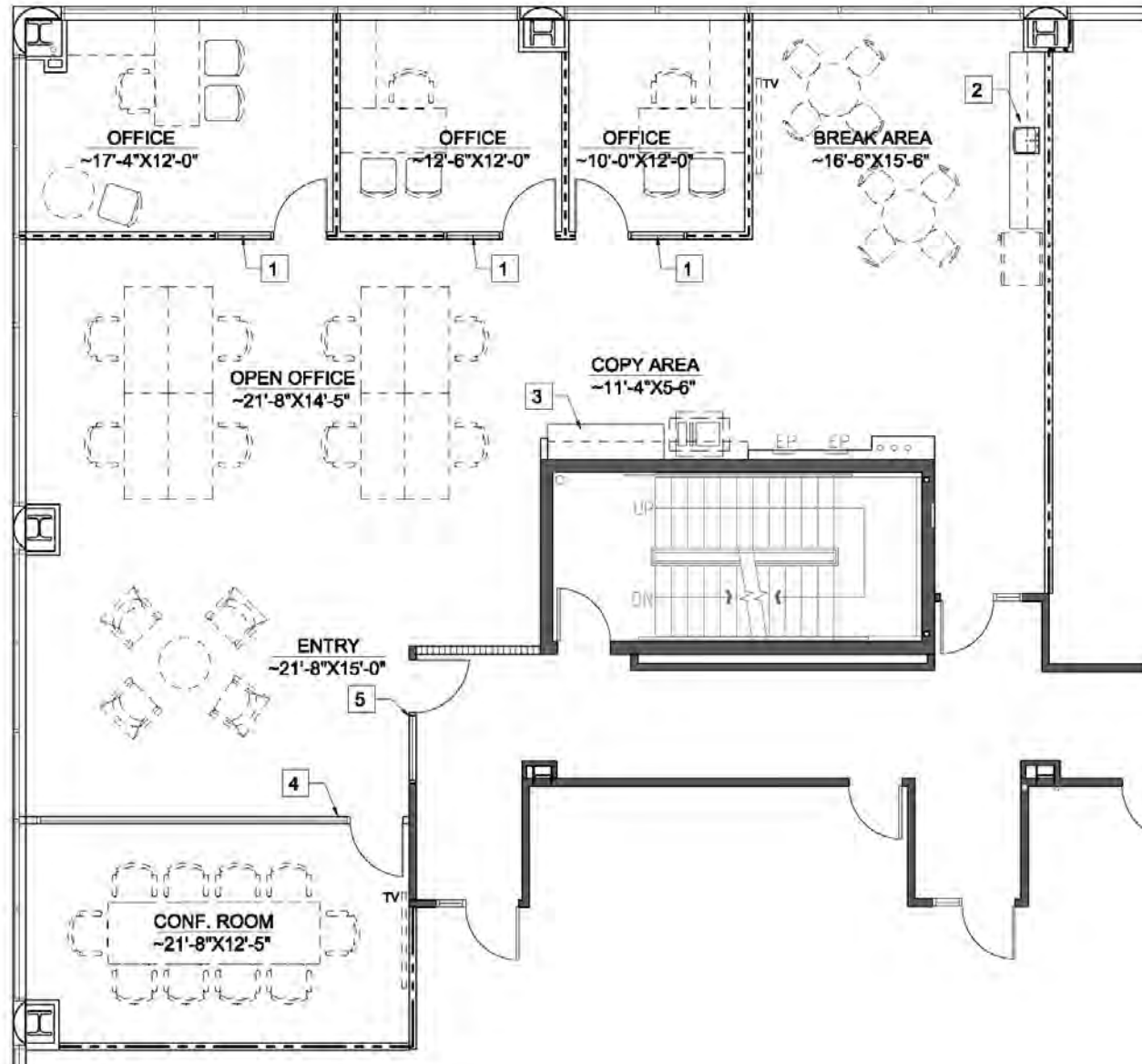


SUITE #220
SCALE: 1/8" = 1'-0"



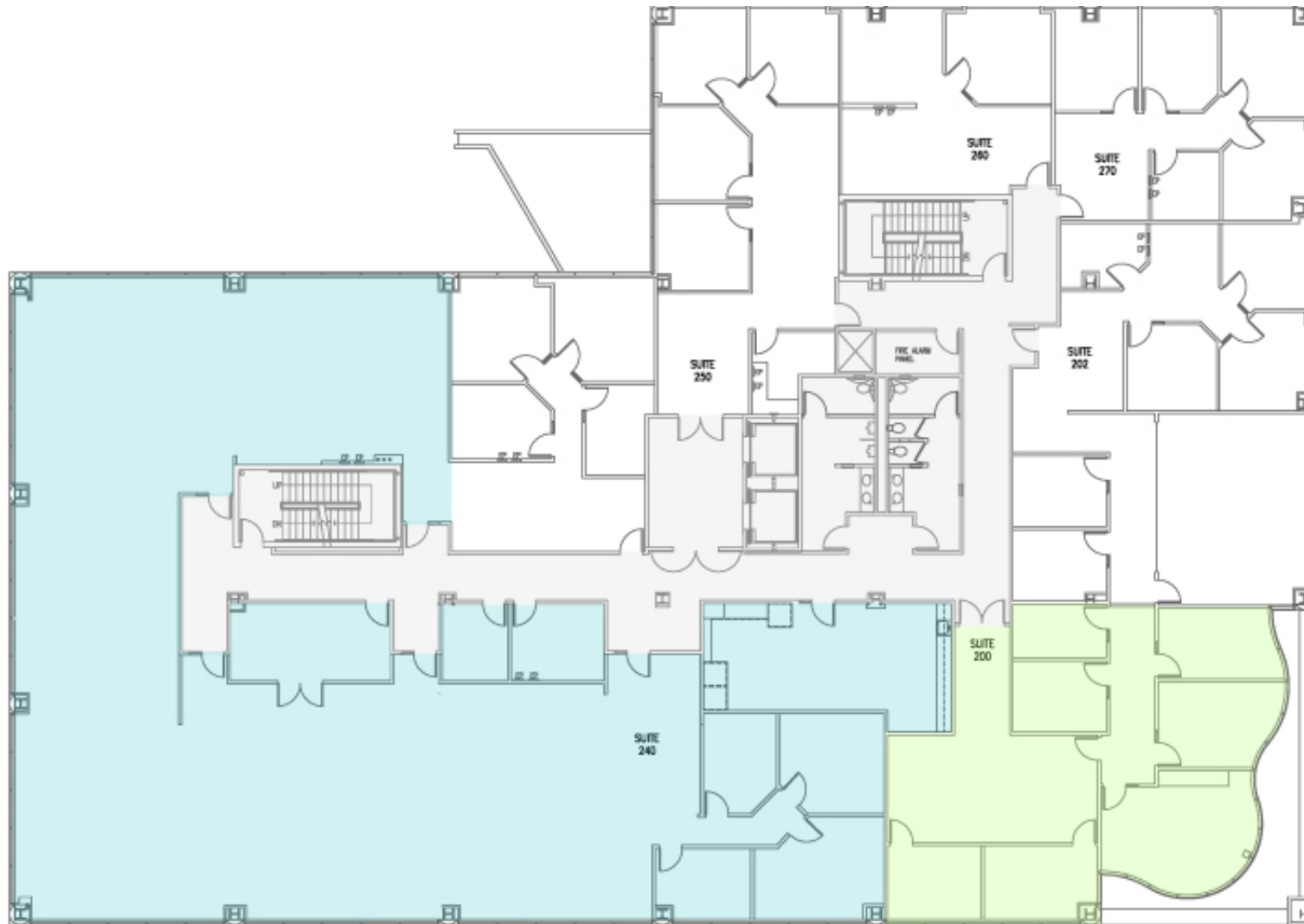
FLOOR PLAN

Suite 230 "Proposed"
Approximately 2,749 SF



FLOOR PLAN

Suite 200-230 "As-Built"
Approximately 10,515 SF



Suite 220: 8,291 SF

Suite 200: 2,224 SF

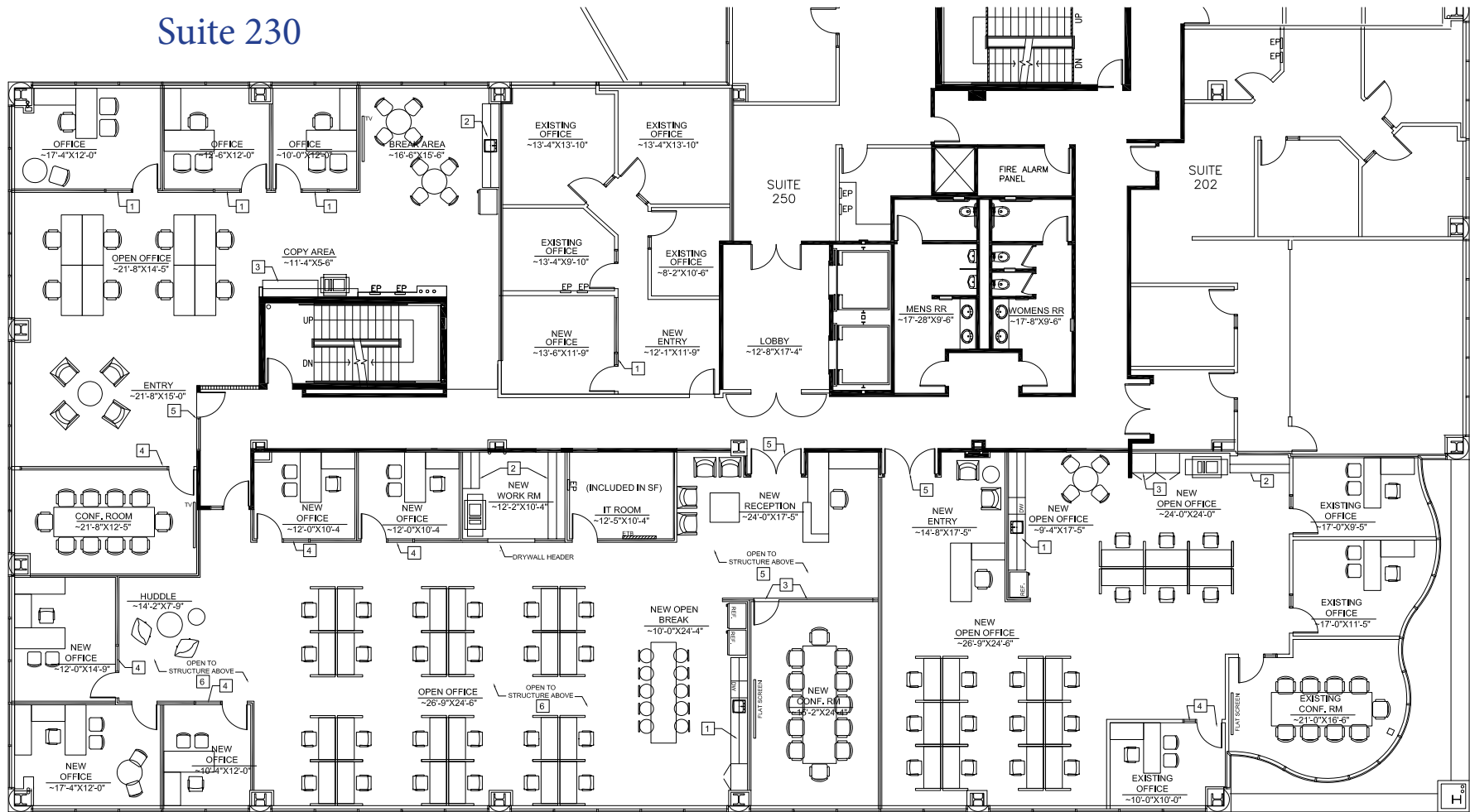
FLOOR PLAN

Suite 200-230 "Proposed"

These suites can be combined as follows:

Suite 220-230: 7,081 SF | Suite 200-220: 7,766 SF | Suite 200-230: 10,515 SF

Suite 230

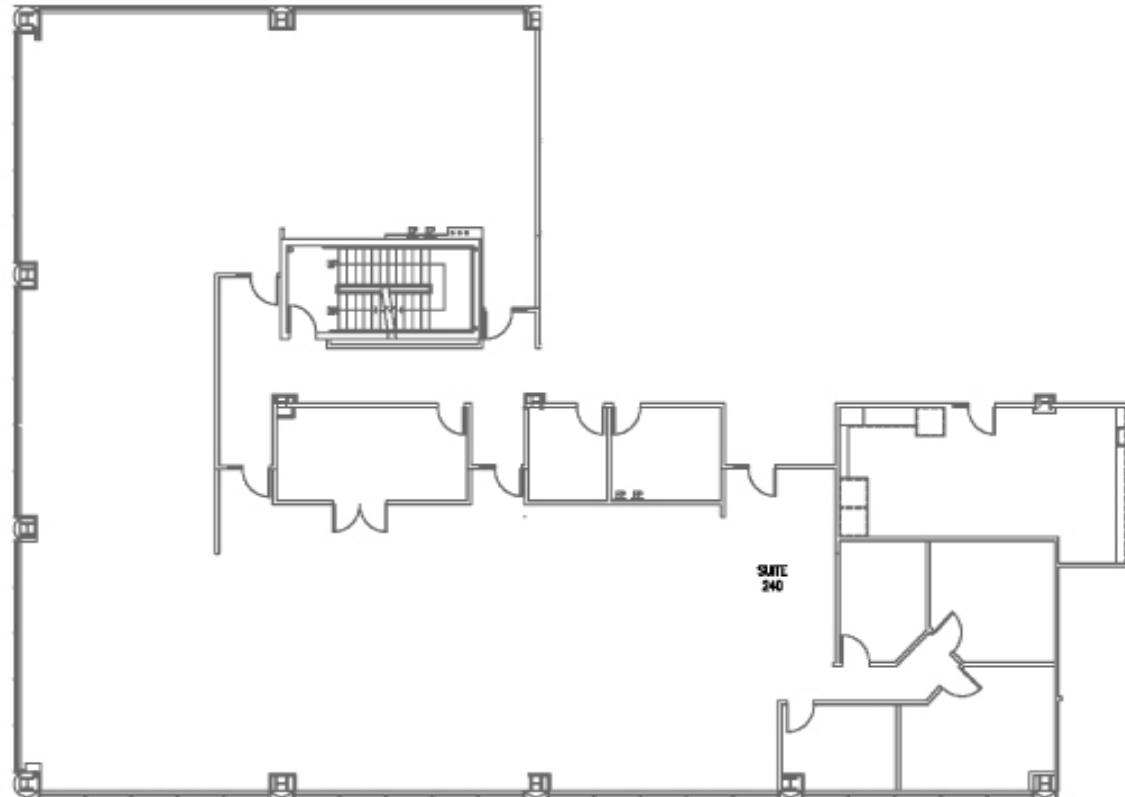


Suite 220

Suite 200

FLOOR PLAN

Suite 220 "As-Built"
Approximately 8,291 SF
Divisible to 2,749 SF & 5,542 SF



THE BLUFFS



M. BERNARDO DRIVE

VIA DEL CAMPO



1 4S Commons Town Center

Jimbo's, Ralphs, Bed Bath & Beyond, Verizon Wireless, The UPS Store, CVS, Bank of America, Miguel's Cocina, Wells Fargo, Wendy's, Chipotle, Daphne's, Jamba Juice, Pei Wei

2 4S Ranch Village

Carl's Jr., Subway, Starbucks, T-Mobile, Sushi on the Rock, Flippin' Pizza

3 Park Terrace

24 Hour Fitness, Souplantation, Hilton Garden Inn

4 The Mercado Rancho Bernardo

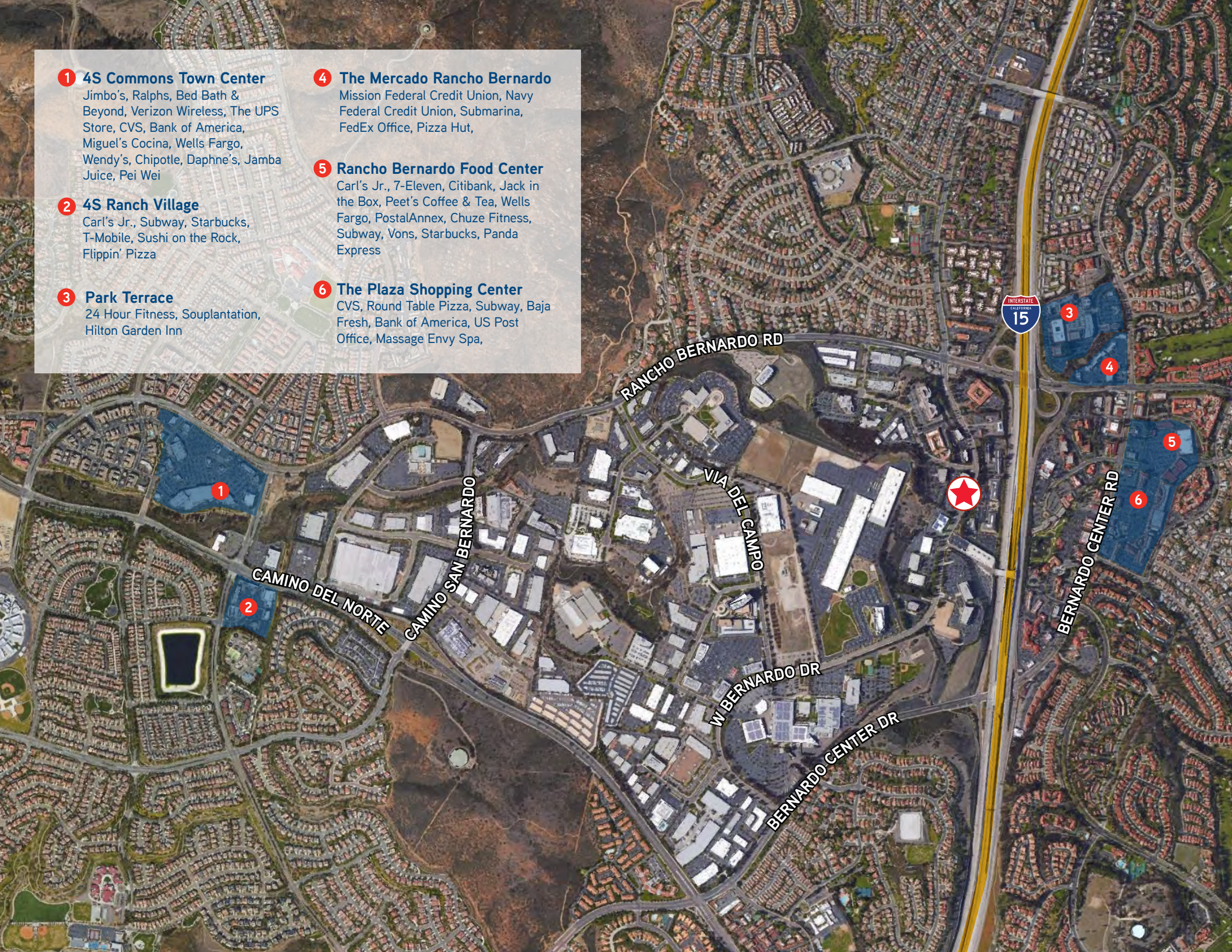
Mission Federal Credit Union, Navy Federal Credit Union, Submarina, FedEx Office, Pizza Hut,

5 Rancho Bernardo Food Center

Carl's Jr., 7-Eleven, Citibank, Jack in the Box, Peet's Coffee & Tea, Wells Fargo, PostalAnnex, Chuze Fitness, Subway, Vons, Starbucks, Panda Express

6 The Plaza Shopping Center

CVS, Round Table Pizza, Subway, Baja Fresh, Bank of America, US Post Office, Massage Envy Spa,



1

2

3

4

5

6



16870

The Bluffs

David Harper
858.677.5335
david.harper@colliers.com
Lic. No. 00880644

4350 La Jolla Village Dr, Suite 500
San Diego, CA 9122
858.455.1515
www.colliers.com

Colliers

This document has been prepared by Colliers International for advertising and general information only. Colliers International makes no guarantees, representations or warranties of any kind, expressed or implied, regarding the information including, but not limited to, warranties of content, accuracy and reliability. Any interested party should undertake their own inquiries as to the accuracy of the information. Colliers International excludes unequivocally all inferred or implied terms, conditions and warranties arising out of this document and excludes all liability for loss and damages arising there from. This publication is the copyrighted property of Colliers International and/or its licensor(s). ©2024. All rights reserved