

OBBC NOTES

THESE DRAWINGS CONSOLIDATE THE "WEST" BLDG & "EAST" BLDG INTO ONE BUILDING WHOSE SINGLE FLOOR AREA OF 9507 SF COMPLIES WITH THE UNADJUSTED TABLE 501 VALUE OF 3 ST/40'/14,400 SF FOR A "B" USE GROUP OF 3B CONSTRUCTION TYPE.

USE GROUP: EAST BLDG. "B" BUSINESS OFFICE (PART CHANGE OF USE FROM FORMER B&F1 [PRINTING])
WEST BLDG. "B" (NO CHANGE)

CONSTRUCTION TYPE: EAST BLDG. "3 B"
WEST BLDG. "3 B"

OCCUPANCY LOAD: BASED ON SIZE PER TABLE 806 BUSINESS 100 SF/PERSON GROSS
EAST BLDG. BASEMENT 4300 SF 1ST & 2ND FLOOR 4675 (EACH) TOTAL 13,650 SF
WEST BLDG. 1ST & 2ND FLOOR 4332 (EACH FLOOR) TOTAL 8,664 SF
233 PERSONS TOTAL 23,314 SF

FIRE RATING: 2 HOURS PER TABLE 902

NOTE: WEST BLDG HAS SPRINKLER SYSTEM THRU-OUT.

UNEXCAVATED

THIS FOUNDATION WALL IS ASSUMED TO EXIST. HOWEVER IF UPON EXCAVATION IT IS NOT THERE, A CHANGE ORDER SHALL BE ISSUED FOR EXCAVATION, FOUNDATION & WALL.

LEAVE EXIST'G ASPHALT PAVING AS BASE OF "NEW" CRAWL SPACE.

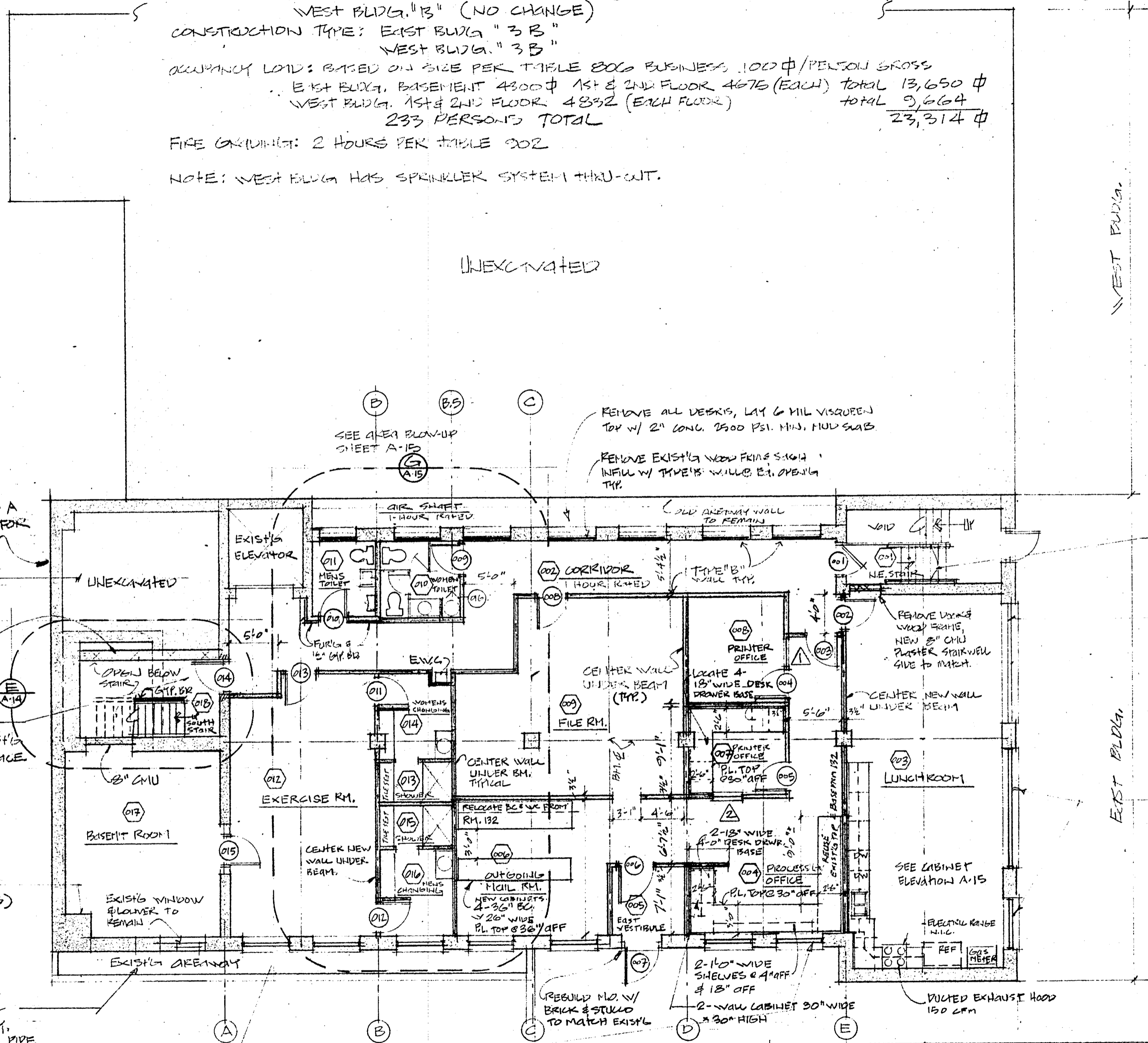
EXCAVATE FOR NEW SOUTH STAIR, NEW 12" CMU WALL, WATERPROOFED ON 10"x24" CONC. FOOTING W/ 2 #5 BARS SEE SHEET A-14

REMOVE EXIST'G WALL & EXCAVATE FOR NEW STAIR. SAW CUT EAST'G SLAB @ 1ST FLR. @ LANDING FACE.

CLOSE OPEN'GS INTO FLUE W/ BRICK MASONRY (TYPICAL ALL FLOORS)

REMOVE ALL DEBRIS & ORGANIC MATERIAL FROM EXIST'G AREAWAY. LAY 4" CP PERFORATED PLASTIC DRAIN PIPE IN BOTTOM OF AREA WAY & CONNECT TO EXIST'G DRAIN (IF NO DRAIN IS FOUND OR DRAIN IS NOT WORKING, PROVIDE ONE) FILL AREAWAY W/ #57 WASHED GRAVEL TO TOP OF WINDOW SILL.

REMOVE EXIST'G WOOD SASH & FRAME, OR CMU. INSTALL NEW GLASS BLOCK IN EXIST'G M.O.'S TYPICAL FOR 7 OPEN'GS ON EAST SIDE



BASEMENT 4575 SF
1/8" = 1'-0"
NORTH

SELF FUNDED PLANS INC.	
1432 HAMILTON AVE. CLEVELAND	
HENRY PIPER, ARCHITECT	
BASEMENT	A-3