

## 465 PLAZA

465 South 400 East, Salt Lake City, UT 84111

### PROPERTY DESCRIPTION:

- Up Front Free Rent
- No Annual Escalations for Term of Sublease
- No Additional Rent or CAM
- Flexible Term to 9/30/2026 with Longer Term Options Available
- No After-Hour Fees for Standard Uses
- Open Floor Plan with Dividers
- Perfect for Call Center, Training Center, Lab, Etc.
- Sound Rated Training Room Dividers
- "Clean" UV Air Purifier Systems
- Immediate Access to I-15 on 500 South
- Walking Distance to TRAX & Numerous Amenities
- Free Parking: 4/1,000 (17 Stalls)

### LEASE RATE:

**\$17.00 SF/YR**  
**(FULL SERVICE)**

### PROPERTY DETAILS:

**SUITE 201: 6,037 SF**

**MONICA RAFFERTY**

801.702.4548

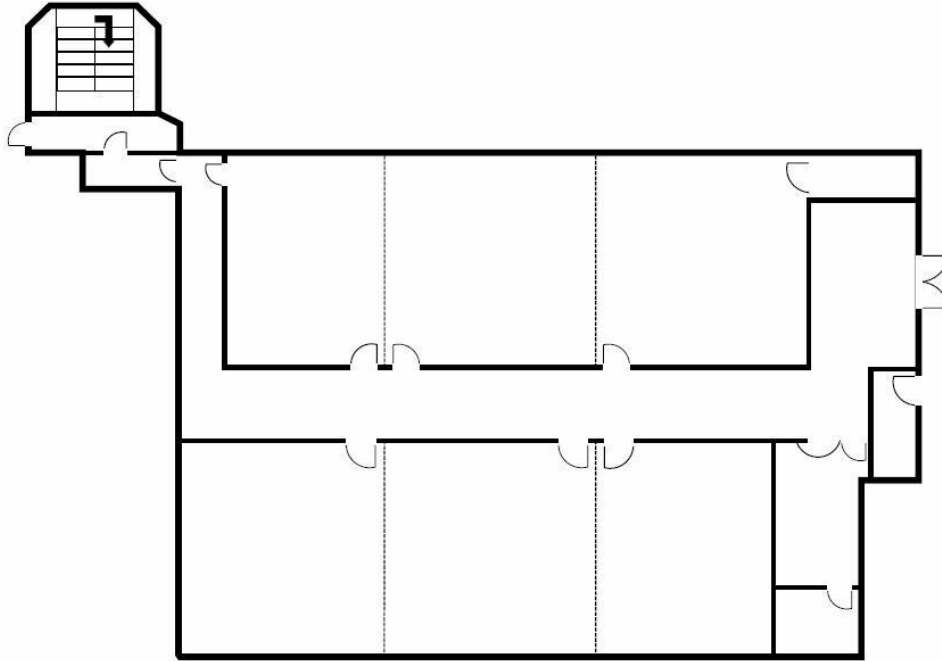
rafferty@iproperties.com

**CHRIS METOS**

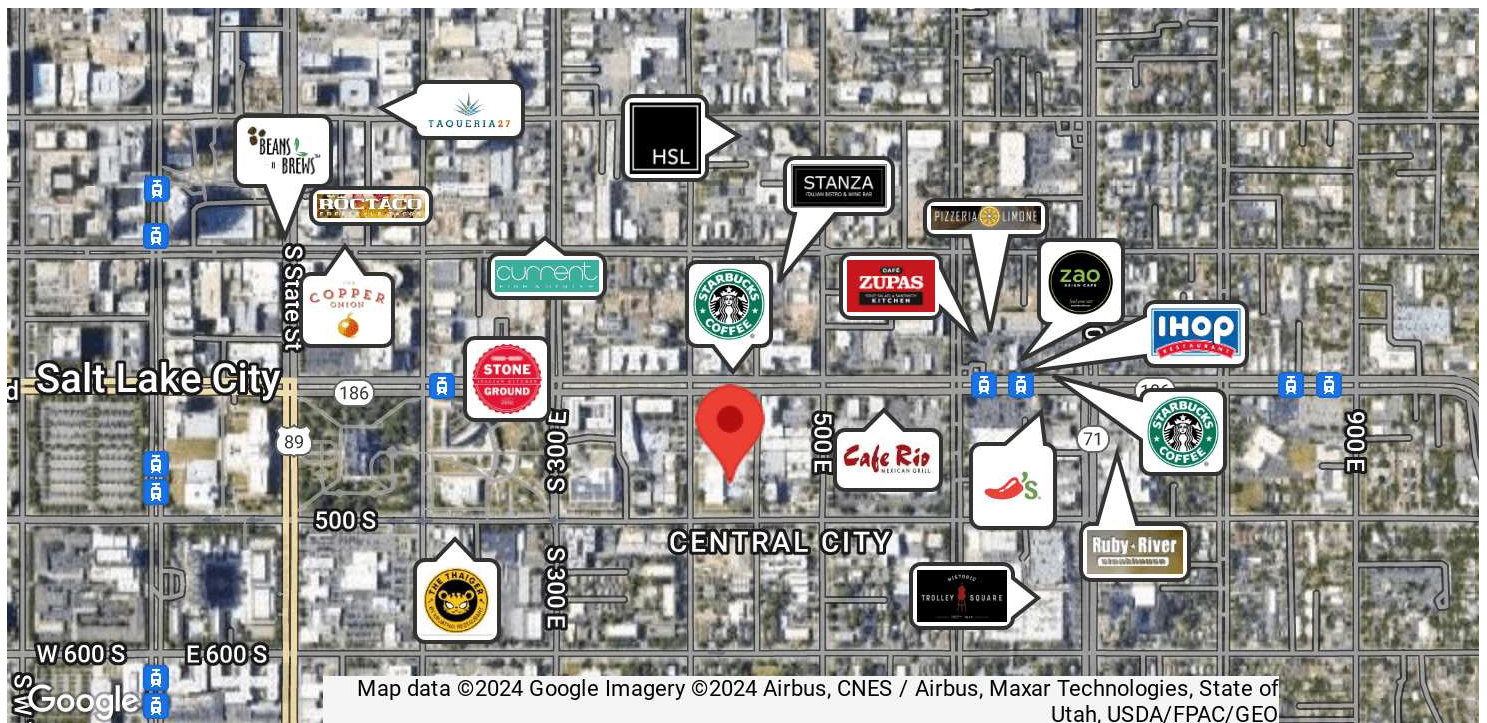
801.879.7870

chris@iproperties.com

51 East 400 South Suite 210  
Salt Lake City, UT 84111  
801.355.0600 | iproperties.com



Open floor plan with dividers. Perfect for call center, training center, lab, etc.



**MONICA RAFFERTY**  
801.702.4548  
rafferty@iproperties.com

**CHRIS METOS**  
801.879.7870  
chris@iproperties.com

51 East 400 South Suite 210  
Salt Lake City, UT 84111  
801.355.0600 | iproperties.com