

FOR LEASE

1104 S. Philadelphia Road

Aberdeen, MD



**CUSHMAN &
WAKEFIELD**



PROPERTY FEATURES

Available SF	7,319 RSF and 3,200 RSF
Term:	5-10 years
Clear Height	19'
Loading	At-Grade Oversize loading doors
Parking	150+ parking spaces
Zoning	Industrial M-2 (City of Aberdeen)
Notes	Ideal flex/R&D/ small bay industrial with close proximity to Aberdeen Proving Grounds and I-95



David Dannenfels

Executive Managing Director

+1 410 382 4653

david.dannenfels@cushwake.com

Tyler Boykin

Executive Managing Director

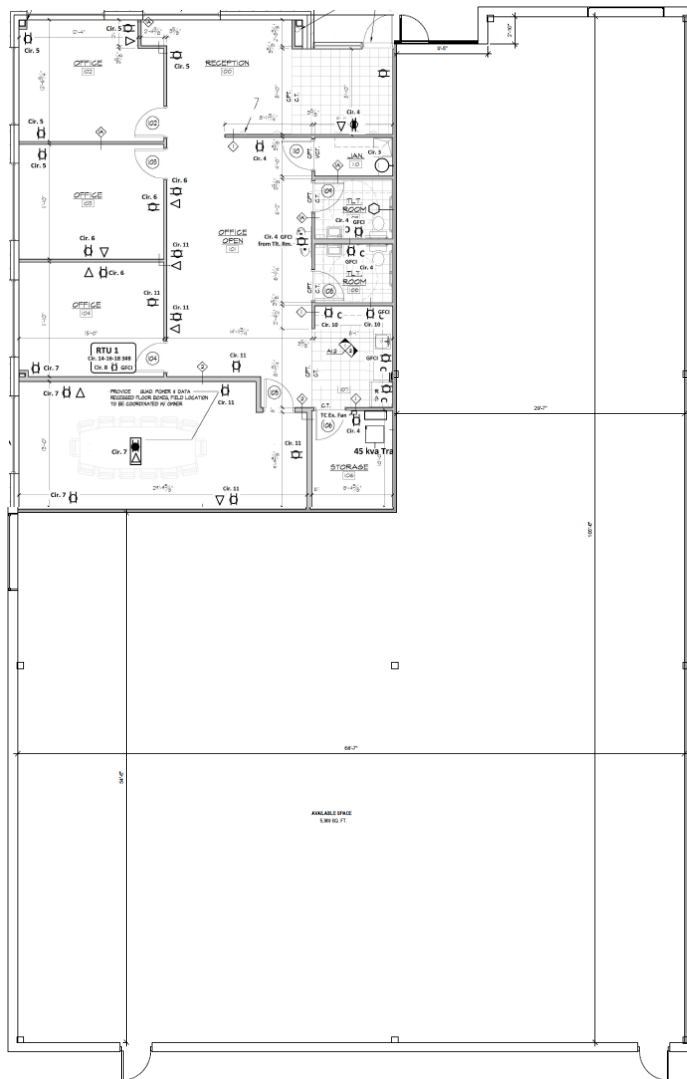
+1 410 864 3560

tyler.boykin@cushwake.com

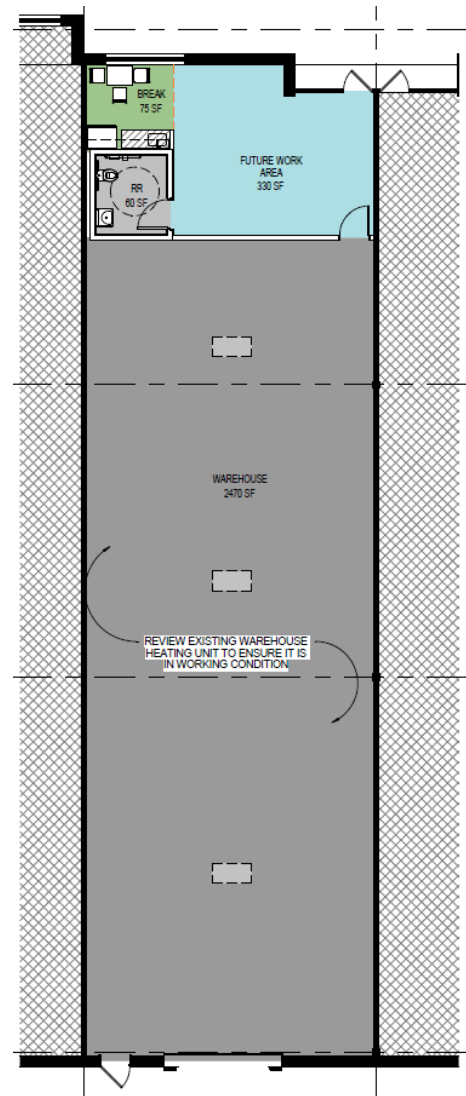
FOR LEASE

1104 S. Philadelphia Road

Aberdeen, MD



7,319 SF



3,200 SF

David Dannenfelser
Executive Managing Director
+1 410 382 4653
david.dannenfelser@cushwake.com

Tyler Boykin
Executive Managing Director
+1 410 864 3560
tyler.boykin@cushwake.com

One East Pratt Street
Suite 700
Baltimore, MD 21202
+1 410 752 4285
cushmanwakefield.com