

**FOR
LEASE**

15472 CHEMICAL LN: PROFESSIONAL OFFICE

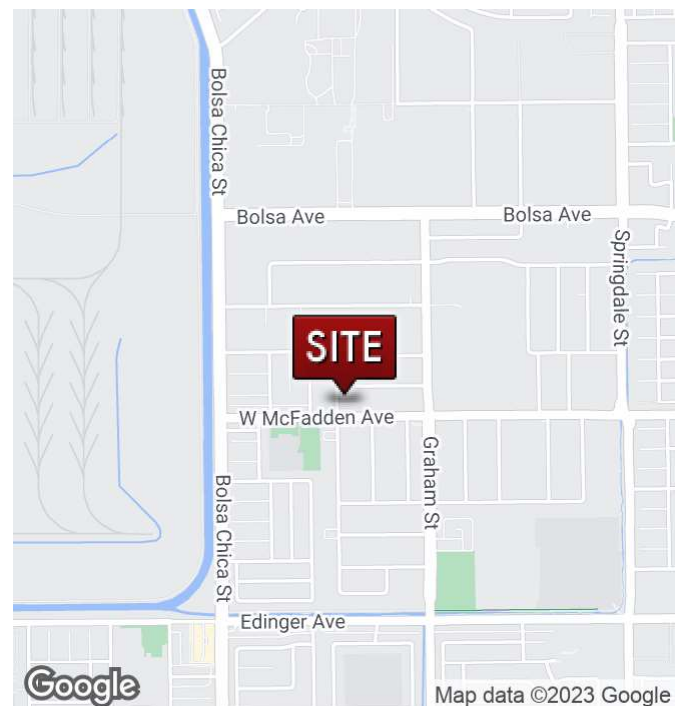
HUNTINGTON BEACH, CA 92649

2,500 SF



PROPERTY HIGHLIGHTS

- Building Has Solar Panels
- Corner Location
- Surface Parking
- Amenities Nearby
- Low Operating Expenses



[CLICK FOR WEBSITE](#)

JIM HAWKINS

Principal
714.564.7126
jhawkins@lee-associates.com
CalDRE #00833274

**LEE &
ASSOCIATES**

COMMERCIAL REAL ESTATE SERVICES
DRE # 01011260
1004 West Taft Avenue, Suite 150
Orange, CA 92865
<https://www.lee-associates.com/orange/>

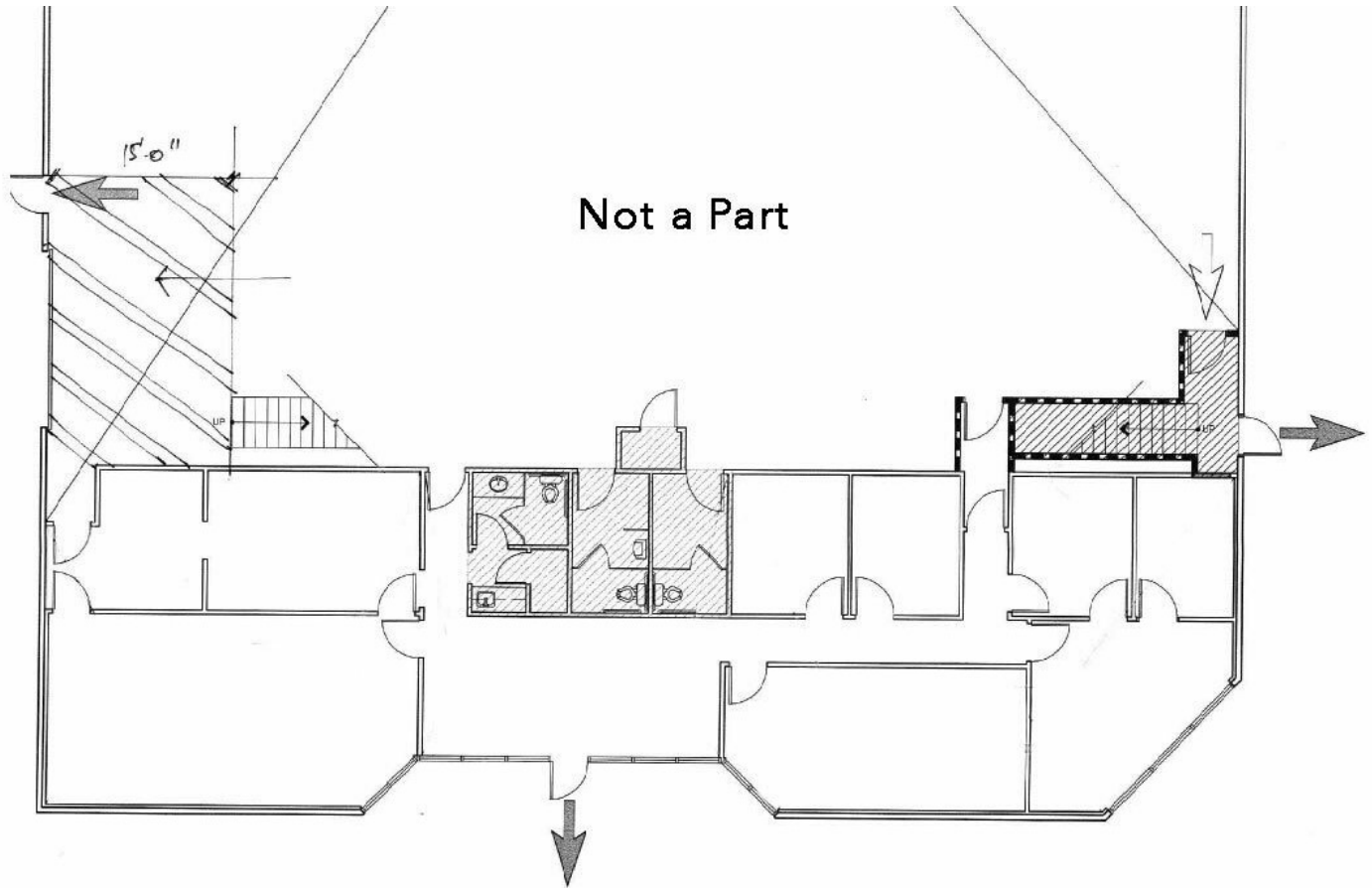
All information contained herein has been provided by Lessor and/or third parties, but has not been independently verified by Lee & Associates or its agent(s). Lessee and interested parties should independently verify all information communicated by these sources.

FOR LEASE

15472 CHEMICAL LN: PROFESSIONAL OFFICE

HUNTINGTON BEACH, CA 92649

2,500 SF



AVAILABLE SPACES

SUITE	SIZE (SF)	LEASE TYPE	LEASE RATE	DESCRIPTION
15472 Chemical Lane	2,500 SF	Modified Gross	\$1.80 SF/month	Available Now

JIM HAWKINS

Principal
714.564.7126
jhawkins@lee-associates.com
CalDRE #00833274

[CLICK FOR WEBSITE](#)

LEE & ASSOCIATES

COMMERCIAL REAL ESTATE SERVICES
DRE # 01011260
1004 West Taft Avenue, Suite 150
Orange, CA 92865
<https://www.lee-associates.com/orange/>

All information contained herein has been provided by Lessor and/or third parties, but has not been independently verified by Lee & Associates or its agent(s). Lessee and interested parties should independently verify all information communicated by these sources.