

1,995 SQUARE FEET OFFICE SUITE



232 HERZBERG
OTTAWA, ON

Wesley Stinson Commercial Realtor
613.401.5864 | wstinson@royalpage.ca

Royal LePage® Performance Realty
165 Pretoria AVE
OTTAWA, ON
www.royalpagecommercial.com

FOR SUBLEASE

Contact agent for rates.

Property Features

**EXCEPTIONAL OFFICE OPPORTUNITY IN THE HEART OF KANATA NORTH.
ELEVATE YOUR BUSINESS IN OTTAWA'S PREMIER TECHNOLOGY HUB..**

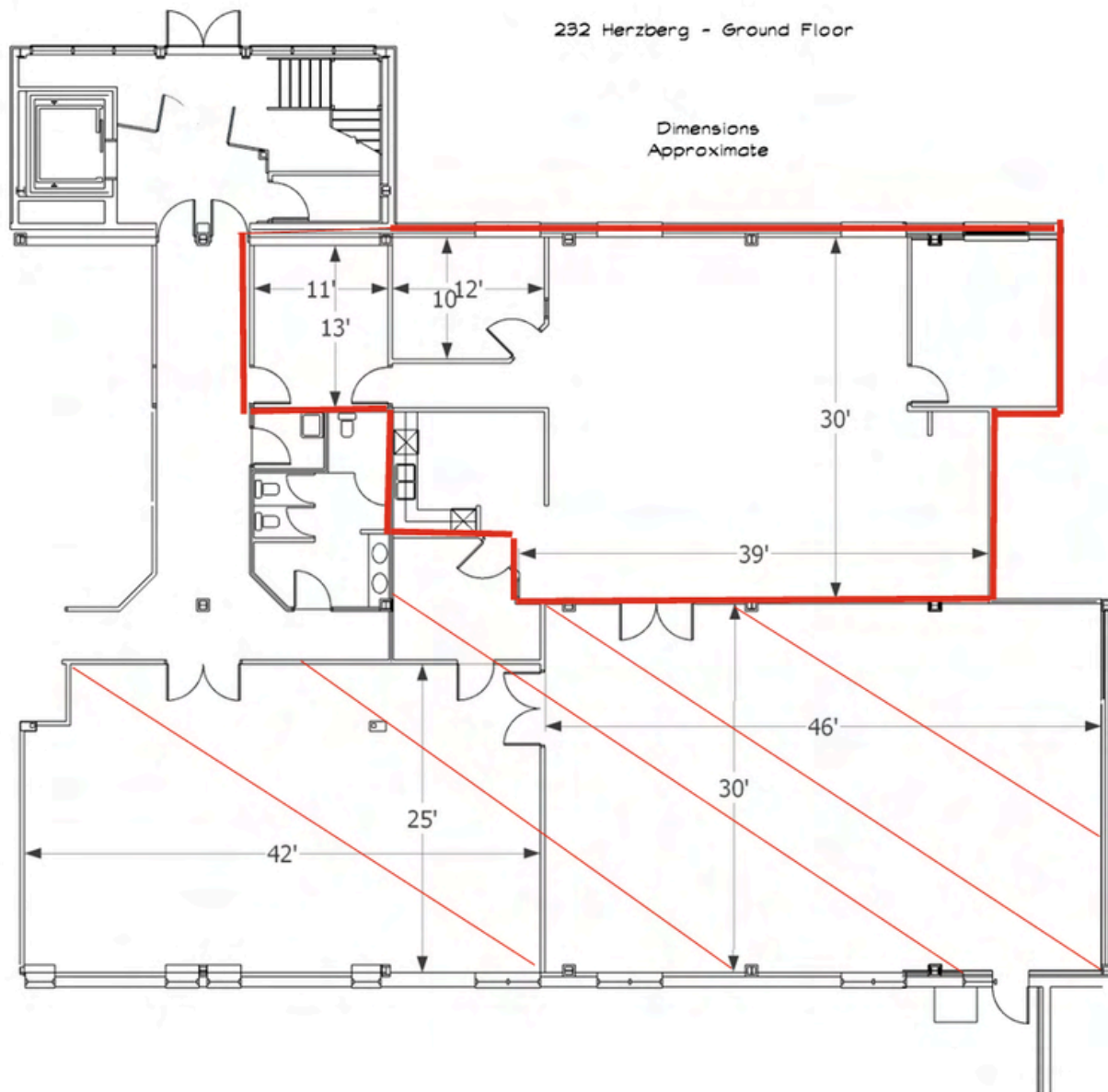
- This bright, modern, and fully-functional office suite is designed for high-growth tech firms or professional service providers.
- 1995 sq/ft of turk-key first floor office space available for Sub-Lease until January 2029.
- Renovated in 2018, the unit features a contemporary fit-up that maximizes natural and fosters a collaborative atmosphere.
- In-suite kitchenette and ample parking available. Furniture can be included.



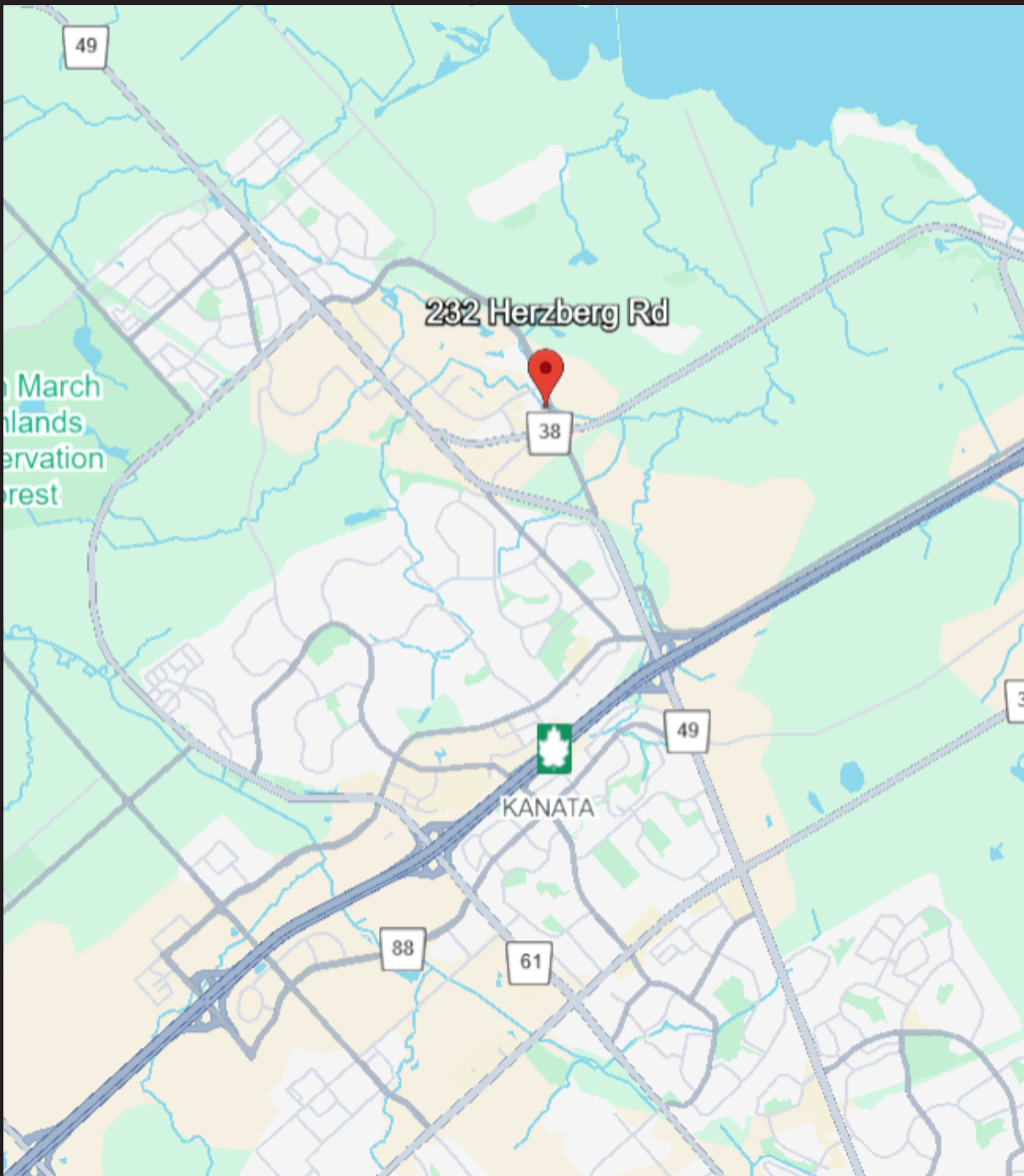
FLOOR PLAN

232 Herzberg - Ground Floor

Dimensions
Approximate



LOCATION MAP



Royal LePage® is a registered trademark of Royal Bank of Canada and is used under licence by Residential Income Fund L.P., Bridgemark Real Estate Services Inc. and Bridgemark Real Estate Services Manager Limited. All offices are independently owned and operated, except those marked as indicated at rlp.ca/disclaimer. Not intended to solicit currently listed properties or buyers under contract. The above information is from sources believed reliable, however, no responsibility is assumed for the accuracy of this information. ©2025 Bridgemark Real Estate Services Manager Limited. All rights reserved.