

FOR LEASE

SILBER ROAD BUSINESS CENTER

2055 SILBER RD., SUITE 101

Houston, TX 77055

HIGHLIGHTS

- ±4,200 Total SF
- Rear Load Configuration
- ±1,622 SF Office A
- (1) Dock-High Door
- ±2,578 SF Warehouse
- 17-20' Clear Height

PLEASE CONTACT:

GREG HOLMES

Senior Associate
+1 713 577 1902
gregory.holmes@cbre.com

SAVANNAH SMITH

Associate
+1 713 577 1851
savannah.smith@cbre.com

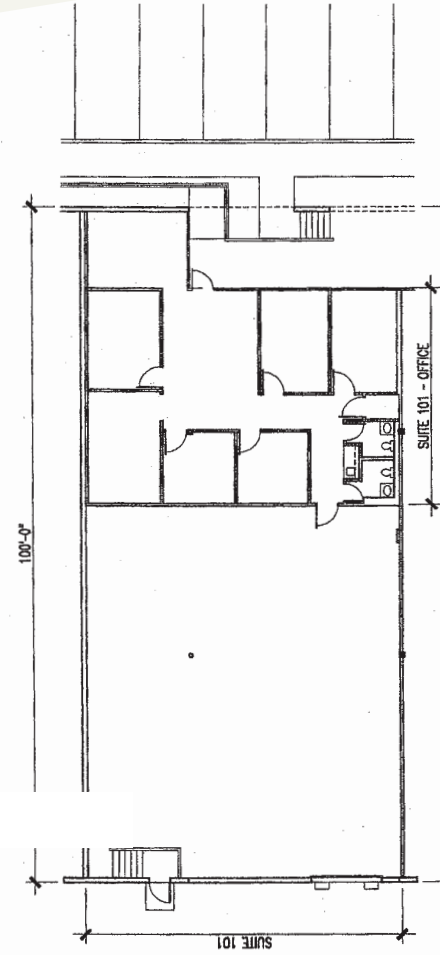


FOR LEASE

SILBER ROAD BUSINESS CENTER

2055 SILBER RD., SUITE 101

Houston, TX 77055



PLEASE CONTACT:

GREG HOLMES

Senior Associate

+1 713 577 1902

gregory.holmes@cbre.com

SAVANNAH SMITH

Associate

+1 713 577 1851

savannah.smith@cbre.com

Office: 1,622 SF

Warehouse: 2,578 SF