

Rainbow Quail Plaza

Lease Rate: \$1.30/SF/Month (NNN)

CAMS: \$0.36/SF/Month

- + ±3,841 SF
- + Close to Kindred Transitional Care
- + Pylon and building signage
- + Easy access to I-215 from Rainbow Blvd.
- + Close to Spring Valley Hospital

Contact Us

Paul Chaffee, CCIM
Vice President
+1 702 369 4811
Paul.Chaffee@cbre.com
Lic. BS1000874
BUSB.0006977

5765 S Rainbow Blvd, Suite 110-111
Las Vegas, Nevada 89118
www.cbre.com

Take advantage of this below market rate!



Rainbow Quail Plaza

5765 S Rainbow Blvd | Las Vegas, Nevada 89118

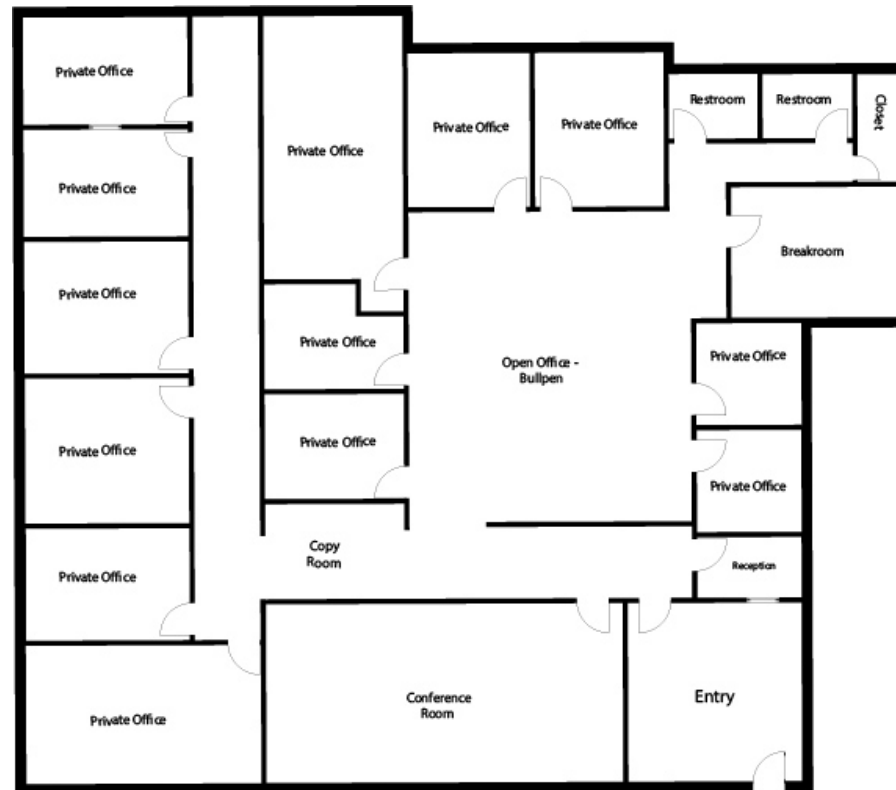
For Lease

Property Highlights

Rainbow Quail Plaza is a conveniently located single story office complex near the intersection of Rainbow Boulevard and Russell Road in the Southwest part of Las Vegas. This property has a new and modern feel. The grounds are made up of mostly parking with up-front parking available for most suites. A bus stop is located directly in front of the center on Rainbow Blvd. This central Southeast location provides quick, convenient access to the 215 at South Rainbow Boulevard.



Floor Plan



5765 S. Rainbow Blvd., Suite 111

Las Vegas, NV

*** NOT TO SCALE***

Rainbow Quail Plaza

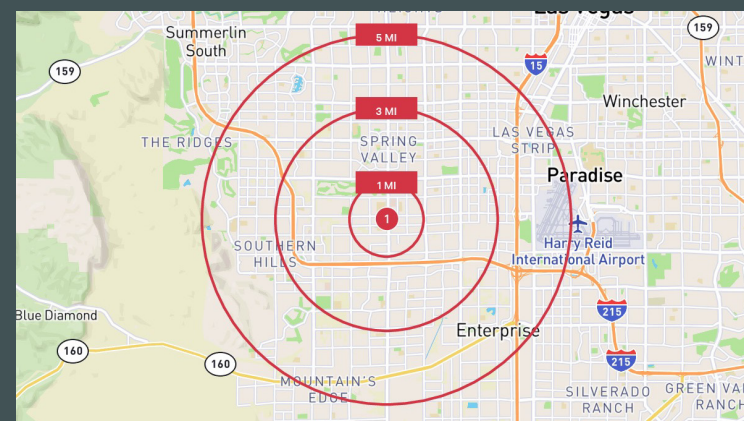
5765 S Rainbow Blvd | Las Vegas, Nevada 89118

For Lease



Demographics

	1 Mile	3 Miles	5 Miles
Population	12,345	154,127	378,146
Households	5,014	61,555	149,146
Average Household Income	\$114,928	\$96,250	\$102,519
Median Household Income	\$84,494	\$72,300	\$76,404



© 2025 CBRE, Inc. All rights reserved. This information has been obtained from sources believed reliable but has not been verified for accuracy or completeness. CBRE, Inc. makes no guarantee, representation or warranty and accepts no responsibility or liability as to the accuracy, completeness, or reliability of the information contained herein. You should conduct a careful, independent investigation of the property and verify all information. Any reliance on this information is solely at your own risk.

www.cbre.com/lasvegas

CBRE