

RETAIL PROPERTY // FOR LEASE

FULLY-EQUIPPED RESTAURANT & BAR WITH LIQUOR LICENSE IN DETROIT CBD

439 E CONGRESS

DETROIT, MI 48226



- Turn-key operation
- Basement speakeasy potential
- Ability to expand the operation to the second floor
- Exposed brick and industrial details
- Daytime population of 272,120 within 3 miles
- Heavy foot traffic from St Andrews Music Hall
- One (1) block from the People Mover
- Public parking nearby



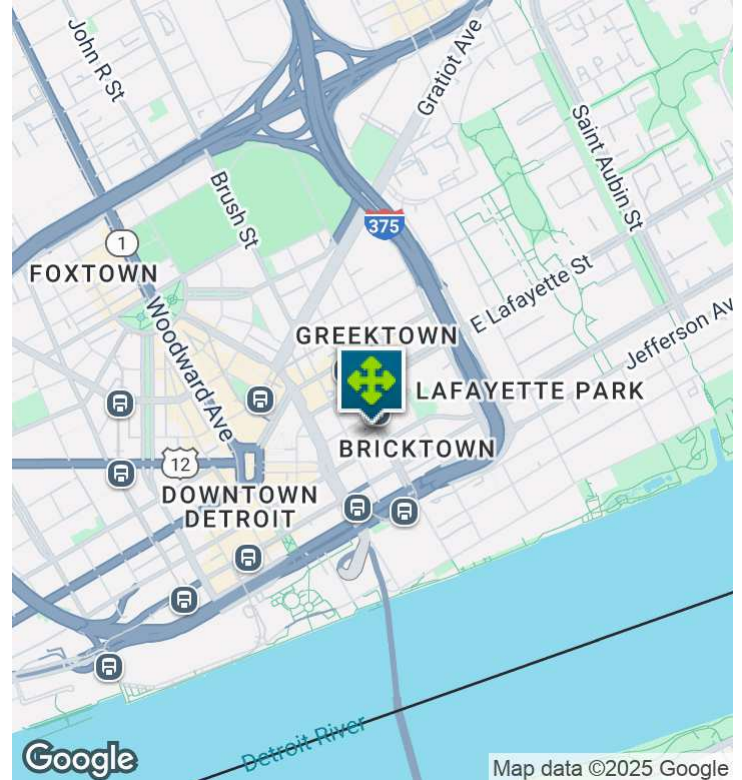
P.A. COMMERCIAL
Corporate & Investment Real Estate

26555 Evergreen Road, Suite 1500
Southfield, MI 48076
248.358.0100
pacommercial.com

We obtained the information above from sources we believe to be reliable. However, we have not verified its accuracy and make no guarantee, warranty or representation about it. It is submitted subject to the possibility of errors, omissions, change of price, rental or other conditions, prior sale, lease or financing, or withdrawal without notice. We include projections, opinions, assumptions or estimates for example only, and they may not represent current, past or future performance of the property. You and your tax and legal advisors should conduct your own investigation of the property and transaction.

439 E CONGRESS, DETROIT, MI 48226 // FOR LEASE

EXECUTIVE SUMMARY



Lease Rate

CONTACT BROKER

OFFERING SUMMARY

Building Size:	8,621 SF
Available SF:	5,420 - 8,621 SF
Year Built:	1900
Renovated:	2022
Zoning:	B-6
Market:	Detroit
Submarket:	CBD
Traffic Count:	4,048

PROPERTY OVERVIEW

Clean finishes, high 16' ceilings, and a beautiful buildout create a perfect atmosphere for an operator to step in and make this location their new home base. Mezzanine offices are available for management, and a basement dive bar area with additional storage and cooler space. The upstairs is also available for a multi-level operation and features a wide open space with high ceilings.. This immaculate build-out is ready for a hands-on operator to take advantage of the liquor license and street traffic from the bustling atmosphere downtown.

LOCATION OVERVIEW

Take advantage of this popular bar-restaurant located on Congress St, immediately next door to Saint Andrews Music Hall. Constant foot traffic and music shows draw a crowd to this busy area, which also houses Sweet Water Tavern and the Millinder Apartment Center. Easily accessible with a paid parking lot located immediately next door, across the street, and abundant street parking. Two blocks south of Greektown and on the same square block as Good People Popcorn, Sandbox Outdoor Bar and Lounge, the popular Detroit Bar, and Mix Bricktown Grille, making this an entertaining area for patrons to visit.



P.A. COMMERCIAL
Corporate & Investment Real Estate

Matthew Schiffman CEO/MANAGING MEMBER

D: 248.281.9907 | C: 248.281.9907

matt@pacommercial.com

We obtained the information above from sources we believe to be reliable. However, we have not verified its accuracy and make no guarantee, warranty or representation about it. It is submitted subject to the possibility of errors, omissions, change of price, rental or other conditions, prior sale, lease or financing, or withdrawal without notice. We include projections, opinions, assumptions or estimates for example only, and they may not represent current, past or future performance of the property. You and your tax and legal advisors should conduct your own investigation of the property and transaction.

439 E CONGRESS, DETROIT, MI 48226 // FOR LEASE

PROPERTY DETAILS

Lease Rate	CONTACT BROKER
------------	----------------

LOCATION INFORMATION

Building Name	439 E Congress, Bar & Restaurant Space
Street Address	439 E Congress
City, State, Zip	Detroit, MI 48226
County	Wayne
Market	Detroit
Sub-market	CBD
Cross-Streets	E Congress & Beaubien Rd
Side of the Street	North
Signal Intersection	Yes
Road Type	Paved
Market Type	Large
Nearest Highway	I-75

BUILDING INFORMATION

Building Size	8,621 SF
Tenancy	Multiple
Ceiling Height	16 ft
Number of Floors	2
Year Built	1900
Year Last Renovated	2022
Construction Status	Existing
Free Standing	No
Number of Buildings	1

PROPERTY INFORMATION

Property Type	Retail
Property Subtype	Street Retail
Zoning	B-6
APN #	01-000141
Corner Property	No
Traffic Count	4048
Traffic Count Street	Congress St
Waterfront	No
Power	Yes

PARKING & TRANSPORTATION

Street Parking	Yes
Parking Type	Surface

UTILITIES & AMENITIES

Security Guard	No
----------------	----



439 E CONGRESS, DETROIT, MI 48226 // FOR LEASE

ADDITIONAL PHOTOS



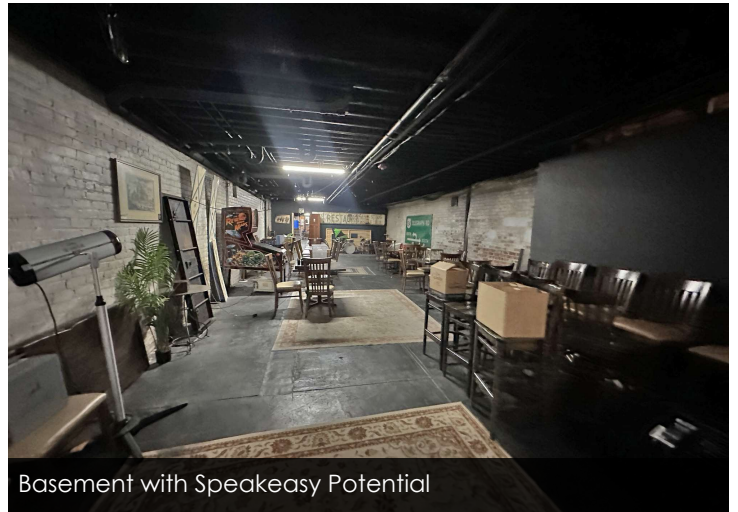
Entrance and Bar



Expansive Bar/Restaurant Space



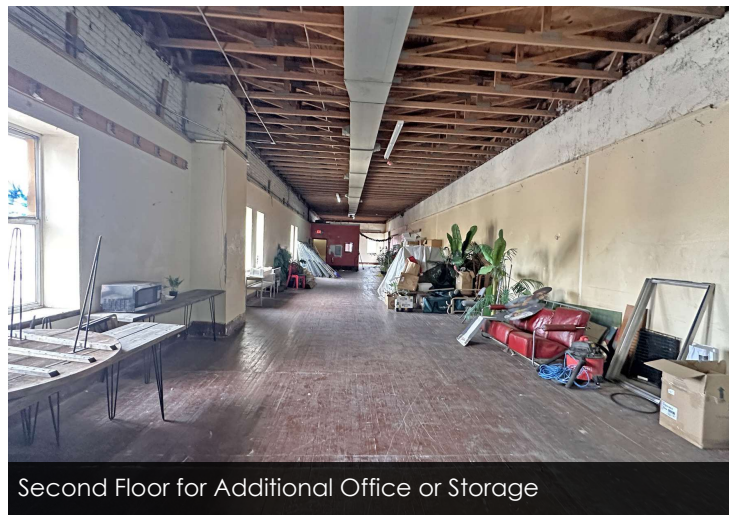
Modern Restrooms



Basement with Speakeasy Potential



Second Floor Management office



Second Floor for Additional Office or Storage



P.A. COMMERCIAL
Corporate & Investment Real Estate

We obtained the information above from sources we believe to be reliable. However, we have not verified its accuracy and make no guarantee, warranty or representation about it. It is submitted subject to the possibility of errors, omissions, change of price, rental or other conditions, prior sale, lease or financing, or withdrawal without notice. We include projections, opinions, assumptions or estimates for example only, and they may not represent current, past or future performance of the property. You and your tax and legal advisors should conduct your own investigation of the property and transaction.

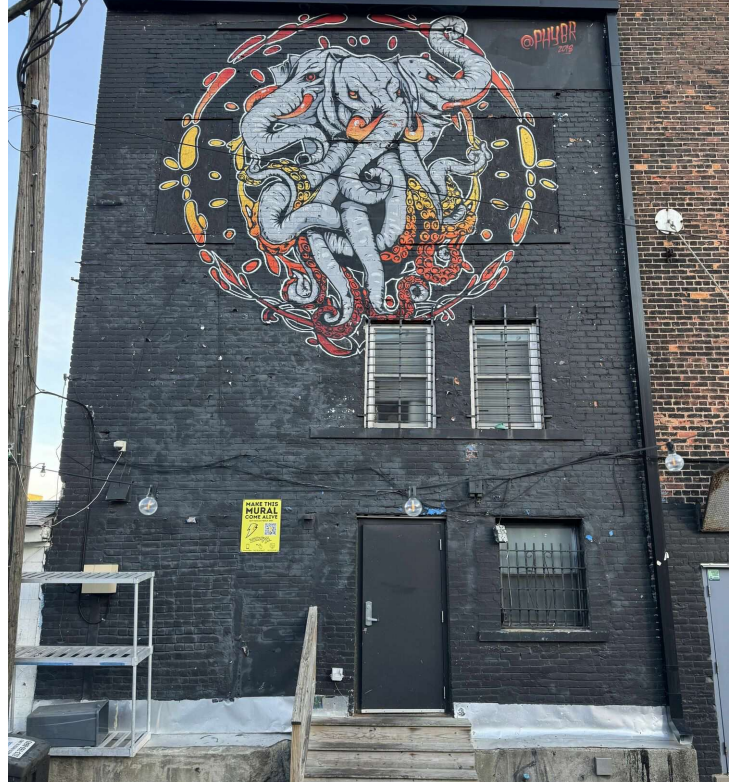
Matthew Schiffman CEO/MANAGING MEMBER

D: 248.281.9907 | C: 248.281.9907

matt@pacommercial.com

439 E CONGRESS, DETROIT, MI 48226 // FOR LEASE

ADDITIONAL PHOTOS



P.A. COMMERCIAL
Corporate & Investment Real Estate

We obtained the information above from sources we believe to be reliable. However, we have not verified its accuracy and make no guarantee, warranty or representation about it. It is submitted subject to the possibility of errors, omissions, change of price, rental or other conditions, prior sale, lease or financing, or withdrawal without notice. We include projections, opinions, assumptions or estimates for example only, and they may not represent current, past or future performance of the property. You and your tax and legal advisors should conduct your own investigation of the property and transaction.

Matthew Schiffman CEO/MANAGING MEMBER

D: 248.281.9907 | C: 248.281.9907

matt@pacommercial.com

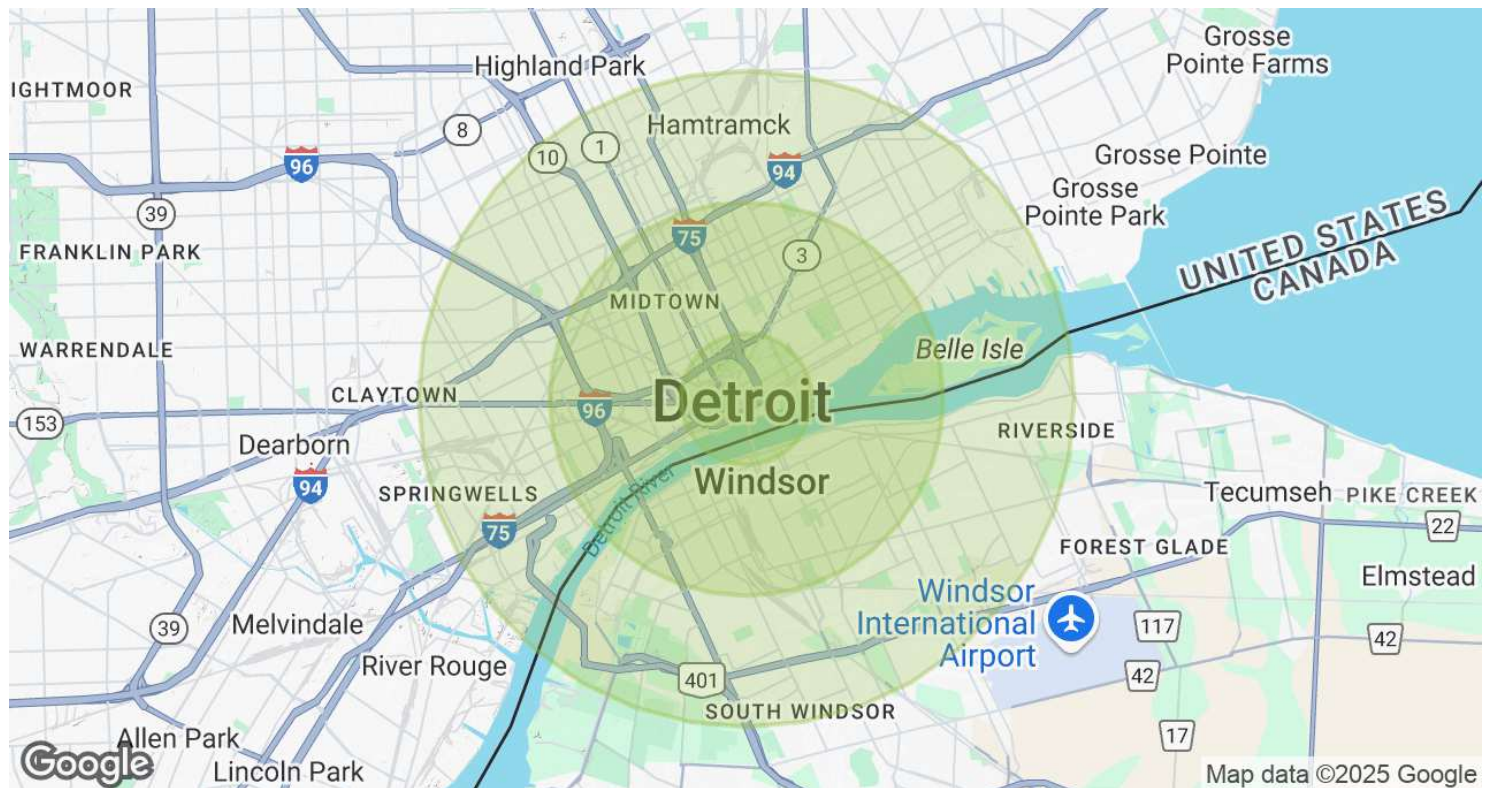
RETAILER MAP



matt@pacommercial.com

439 E CONGRESS, DETROIT, MI 48226 // FOR LEASE

DEMOGRAPHICS MAP & REPORT



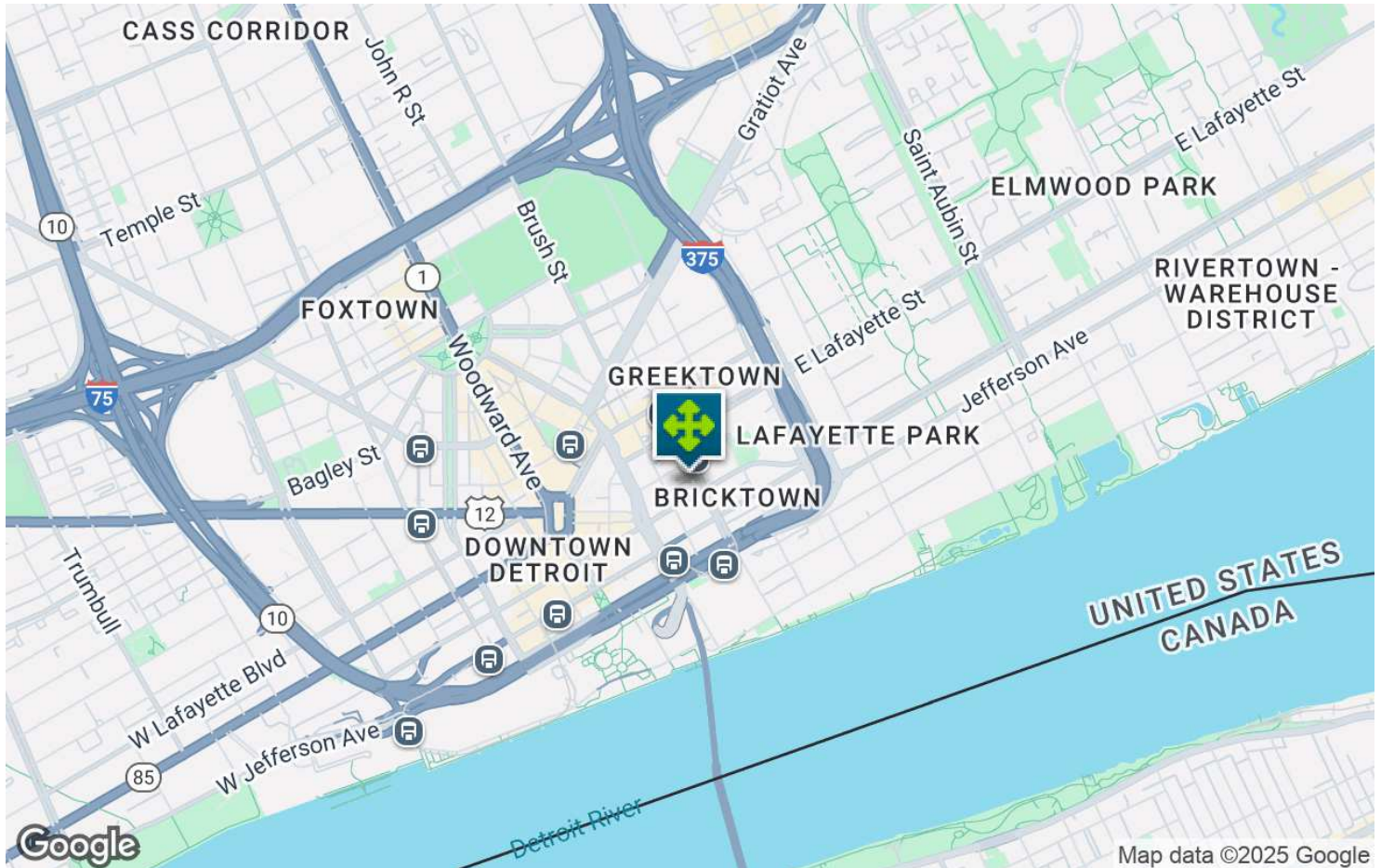
POPULATION	1 MILE	3 MILES	5 MILES
Total Population	14,122	66,598	181,405
Average Age	42	41	38
Average Age (Male)	41	40	37
Average Age (Female)	43	42	39

HOUSEHOLDS & INCOME	1 MILE	3 MILES	5 MILES
Total Households	9,356	36,169	78,787
# of Persons per HH	1.5	1.8	2.3
Average HH Income	\$85,346	\$63,174	\$56,424
Average House Value	\$412,537	\$315,613	\$217,885

Demographics data derived from AlphaMap

439 E CONGRESS, DETROIT, MI 48226 // FOR LEASE

CONTACT US



FOR MORE INFORMATION, PLEASE CONTACT:



Matthew Schiffman
CEO/MANAGING MEMBER

D: 248.281.9907

C: 248.281.9907

matt@pacommercial.com

P.A. Commercial

26555 Evergreen Road, Suite 1500
Southfield, MI 48076

P: 248.358.0100

F: 248.358.5300

pacommercial.com

Follow Us!



We obtained the information above from sources we believe to be reliable. However, we have not verified its accuracy and make no guarantee, warranty or representation about it. It is submitted subject to the possibility of errors, omissions, change of price, rental or other conditions, prior sale, lease or financing, or withdrawal without notice. We include projections, opinions, assumptions or estimates for example only, and they may not represent current, past or future performance of the property. You and your tax and legal advisors should conduct your own investigation of the property and transaction.