

**Ideal for Manufacturing, Warehousing, Auto Repair/
Service, Food Users, Art Storage or Specialty Uses
requiring Full Temperature Controlled Facility**

Unit A: ±10,500 SF (3,000 SF of Free Bonus Storage)
Unit B: ±9,500 SF

**FULLY
RENOVATED**



**FOR
LEASE**

**+23,000 SF INDUSTRIAL WAREHOUSE
DIVISIBLE TO 2 UNITS**

3535 N ANZA ROAD
PALM SPRINGS, CA 92262

ROCKY MORAN | Sr. Vice President
951.276.3681
rmoran@leeriverside.com
DRE 01841701

**LEE &
ASSOCIATES**
COMMERCIAL REAL ESTATE SERVICES



PROPERTY FEATURES

- ▶ $\pm 23,000$ SF or Divisible to 2 Units: (Unit A: $\pm 10,500$ SF ($\pm 3,000$ SF of Free Bonus Storage), (Unit B: $\pm 9,500$ SF)
- ▶ All Units are \$1.35 PSF GRS, or \$1.25 PSF GRS for Tenant taking Full $\pm 23,000$ SF Space
- ▶ Private Gated Yard
- ▶ 3,000 Amps of Power
- ▶ Full Temperature Controlled Warehouse
- ▶ Ideal for Food Users, with Floor Drains Throughout
- ▶ Flexible Heavy Zoning
- ▶ Ideal for Manufacturing, Warehousing, Distribution, Auto Repair or Auto Service or any Specialty Use requiring HVAC in Warehouse
- ▶ Fully Renovated
- ▶ Corner Location in Highly Image Industrial Development
- ▶ Easy Access to 10 Fwy or Hwy 111
- ▶ 4 Roll Up Doors (2 Per Unit)
- ▶ Fully Sprinklered
- ▶ 16' - 18' Clear Heights Throughout
- ▶ Equipped with High Tech Security System Capabilities
- ▶ Located North of Downtown Palm Springs just West of Indian Canyon Drive in the Industrial Area

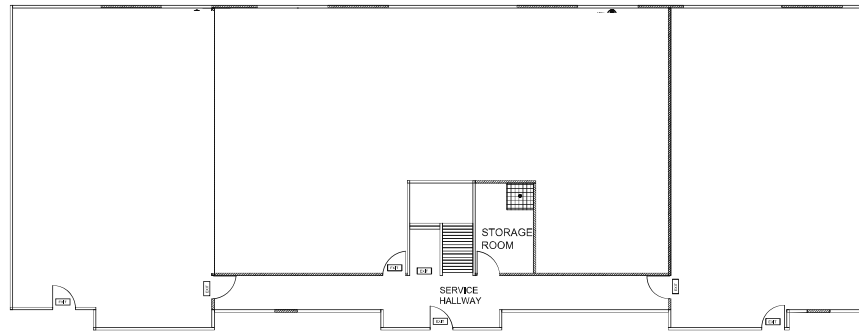
3535 N ANZA ROAD | PALM SPRINGS, CA 92262



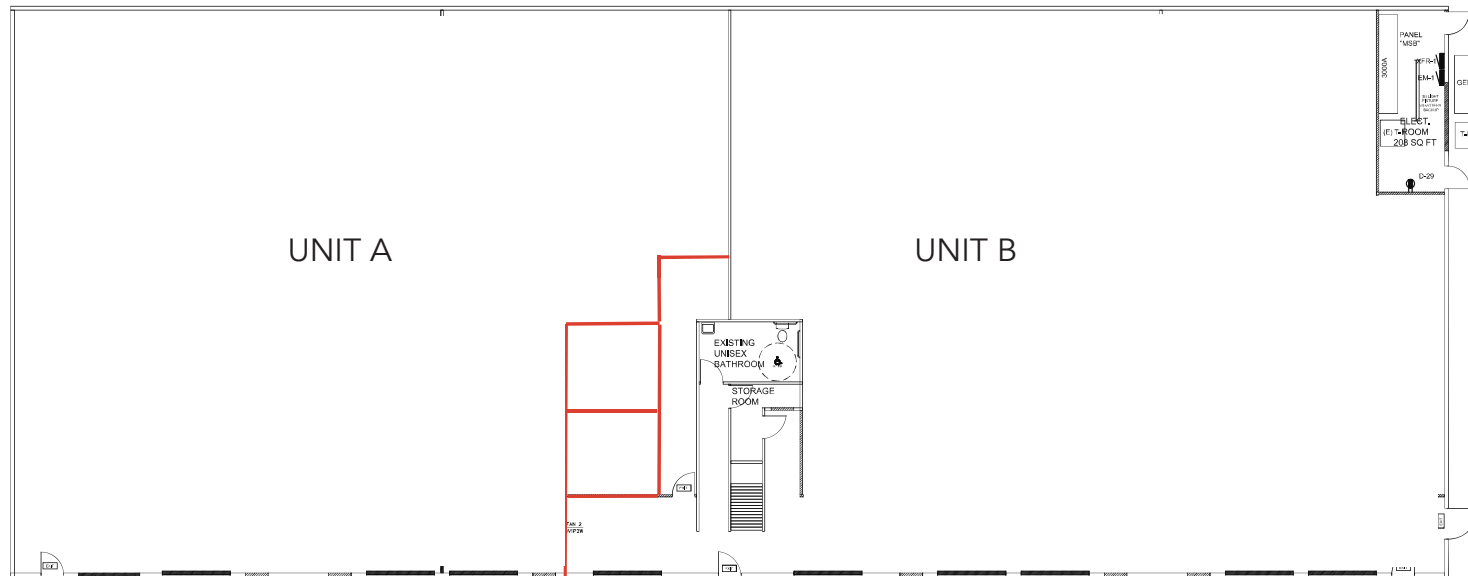
ROCKY MORAN | Senior Vice President | 951.276.3681 | rmoran@leeriverside.com | DRE 01841701

No warranty or representation has been made to the accuracy of the foregoing information. Terms of sale or lease and availability are subject to change or withdrawal without notice. Lee & Associates Commercial Real Estate Services, Inc. - Riverside. 3240 Mission Inn Avenue, Riverside, CA 92507 | Corporate ID# 01048055

2ND FLOOR



1ST FLOOR

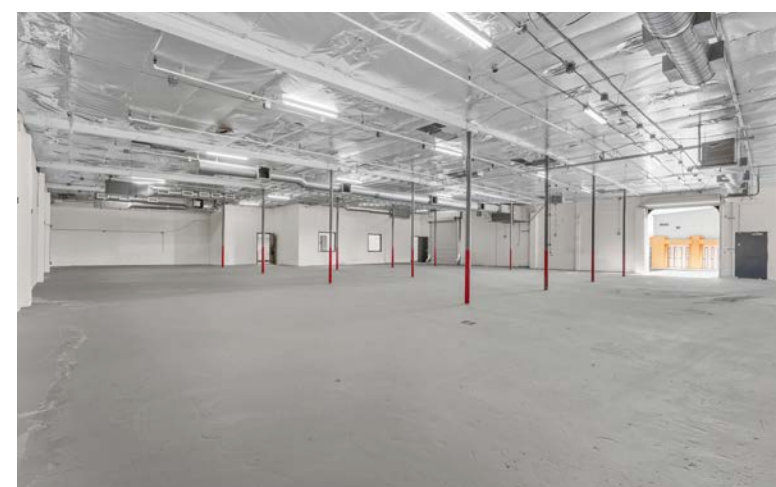
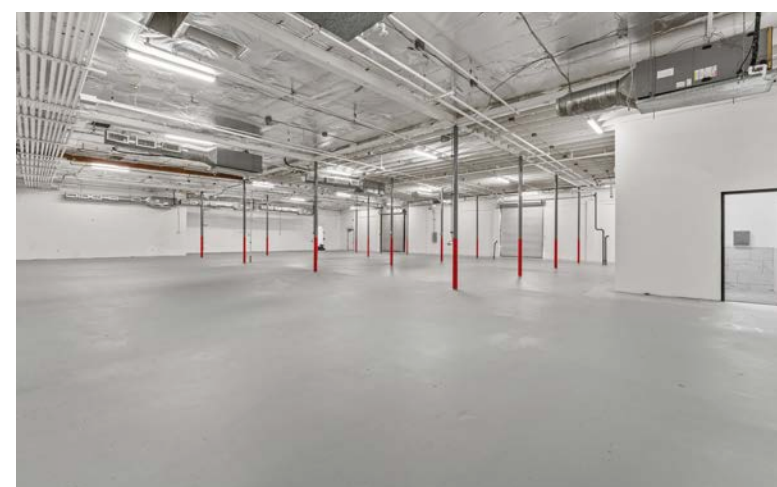
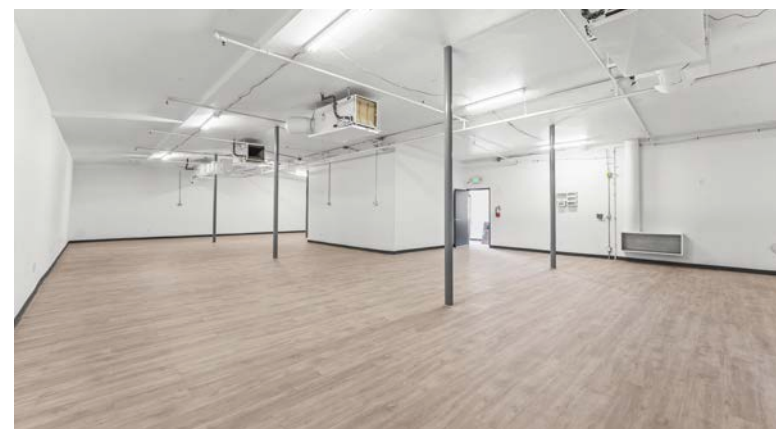


3535 N ANZA ROAD | PALM SPRINGS, CA 92262



ROCKY MORAN | Senior Vice President | 951.276.3681 | rmoran@leeriverside.com | DRE 01841701

No warranty or representation has been made to the accuracy of the foregoing information. Terms of sale or lease and availability are subject to change or withdrawal without notice. Lee & Associates Commercial Real Estate Services, Inc. - Riverside. 3240 Mission Inn Avenue, Riverside, CA 92507 | Corporate ID# 01048055

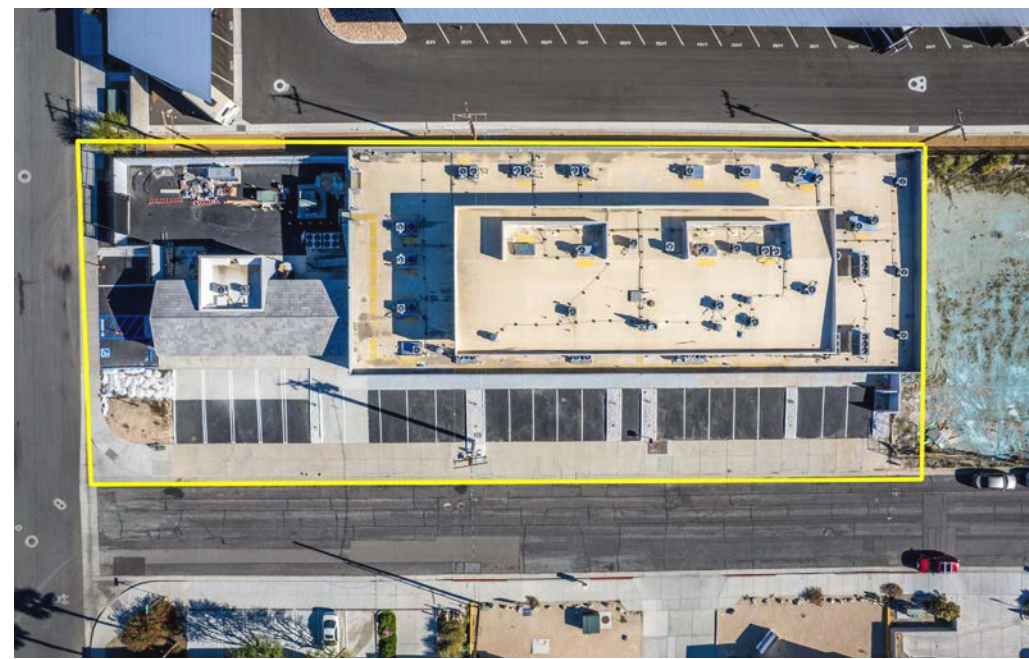


3535 N ANZA ROAD | PALM SPRINGS, CA 92262



ROCKY MORAN | Senior Vice President | 951.276.3681 | rmoran@leeriverside.com | DRE 01841701

No warranty or representation has been made to the accuracy of the foregoing information. Terms of sale or lease and availability are subject to change or withdrawal without notice. Lee & Associates Commercial Real Estate Services, Inc. - Riverside. 3240 Mission Inn Avenue, Riverside, CA 92507 | Corporate ID# 01048055



3535 N ANZA ROAD | PALM SPRINGS, CA 92262



ROCKY MORAN | Senior Vice President | 951.276.3681 | rmoran@leeriverside.com | DRE 01841701

No warranty or representation has been made to the accuracy of the foregoing information. Terms of sale or lease and availability are subject to change or withdrawal without notice. Lee & Associates Commercial Real Estate Services, Inc. - Riverside. 3240 Mission Inn Avenue, Riverside, CA 92507 | Corporate ID# 01048055

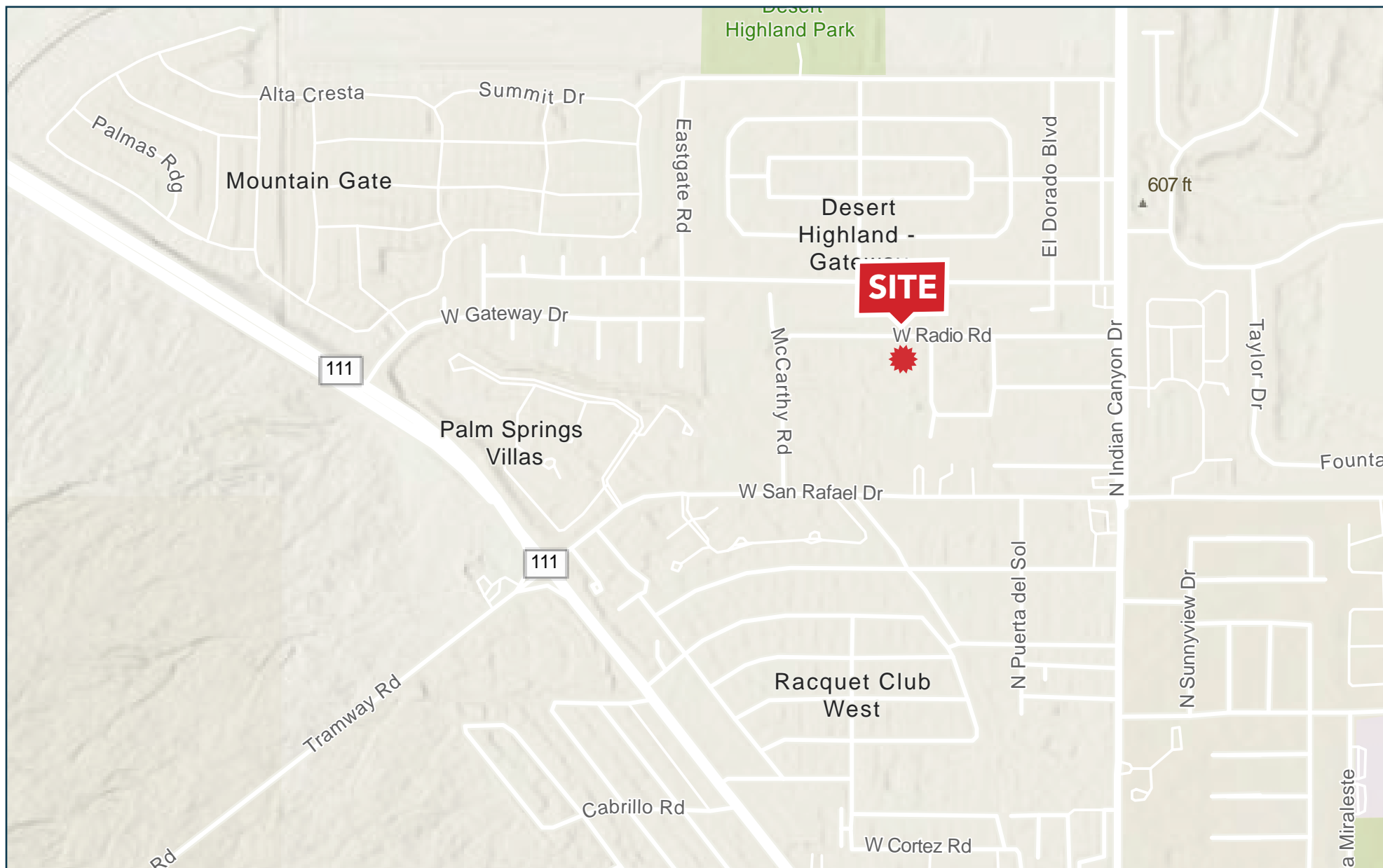


3535 N ANZA ROAD | PALM SPRINGS, CA 92262



ROCKY MORAN | Senior Vice President | 951.276.3681 | rmoran@leeriverside.com | DRE 01841701

No warranty or representation has been made to the accuracy of the foregoing information. Terms of sale or lease and availability are subject to change or withdrawal without notice. Lee & Associates Commercial Real Estate Services, Inc. - Riverside. 3240 Mission Inn Avenue, Riverside, CA 92507 | Corporate ID# 01048055



3535 N ANZA ROAD | PALM SPRINGS, CA 92262



ROCKY MORAN | Senior Vice President | 951.276.3681 | rmoran@leeriverside.com | DRE 01841701

No warranty or representation has been made to the accuracy of the foregoing information. Terms of sale or lease and availability are subject to change or withdrawal without notice. Lee & Associates Commercial Real Estate Services, Inc. - Riverside. 3240 Mission Inn Avenue, Riverside, CA 92507 | Corporate ID# 01048055