

BAYSIDE REALTY PARTNERS PRESENTS

Stonestown Medical Building

595 Buckingham Way, San Francisco

Dominant Medical/Dental Building in Southwestern San Francisco



TRASK LEONARD
President and CEO
650.533.2591
tleonard@baysiderp.com
DRE#01152101



GRACE LINDBERG
Vice President
415.307.0252
glindberg@baysiderp.com
DRE#02230832



Stonestown Medical Building

595 Buckingham Way, San Francisco

LOCATION

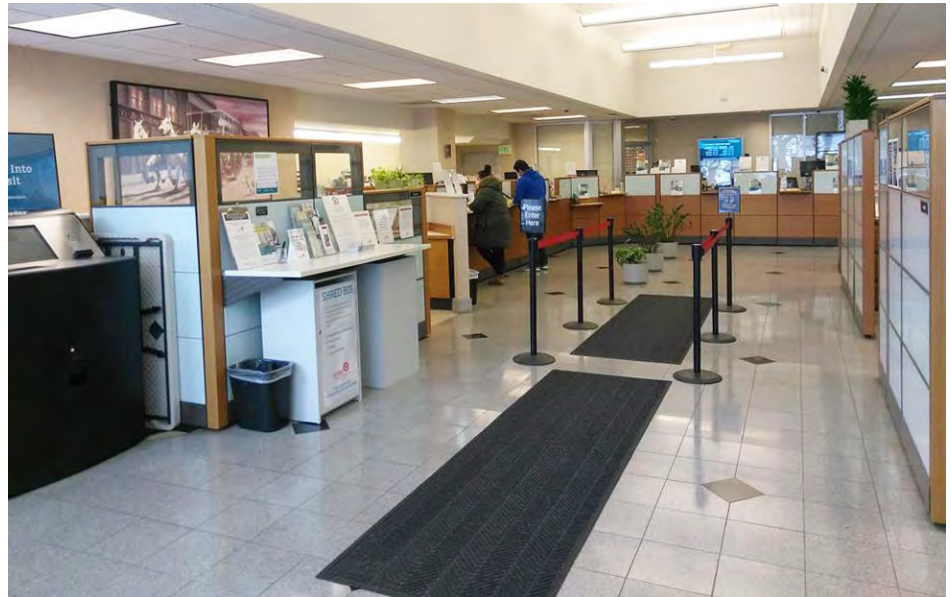
- Stonestown Medical Building is adjacent to Stonestown Galleria Mall, an extremely convenient and visible location on 19th Avenue (Target, Whole Foods, Apple Store)
- 3 miles to UCSF/Parnassus Campus 5 miles to Seton Medical Center
- Multiple public transit options via MUNI
- Near San Francisco State University



BUILDING

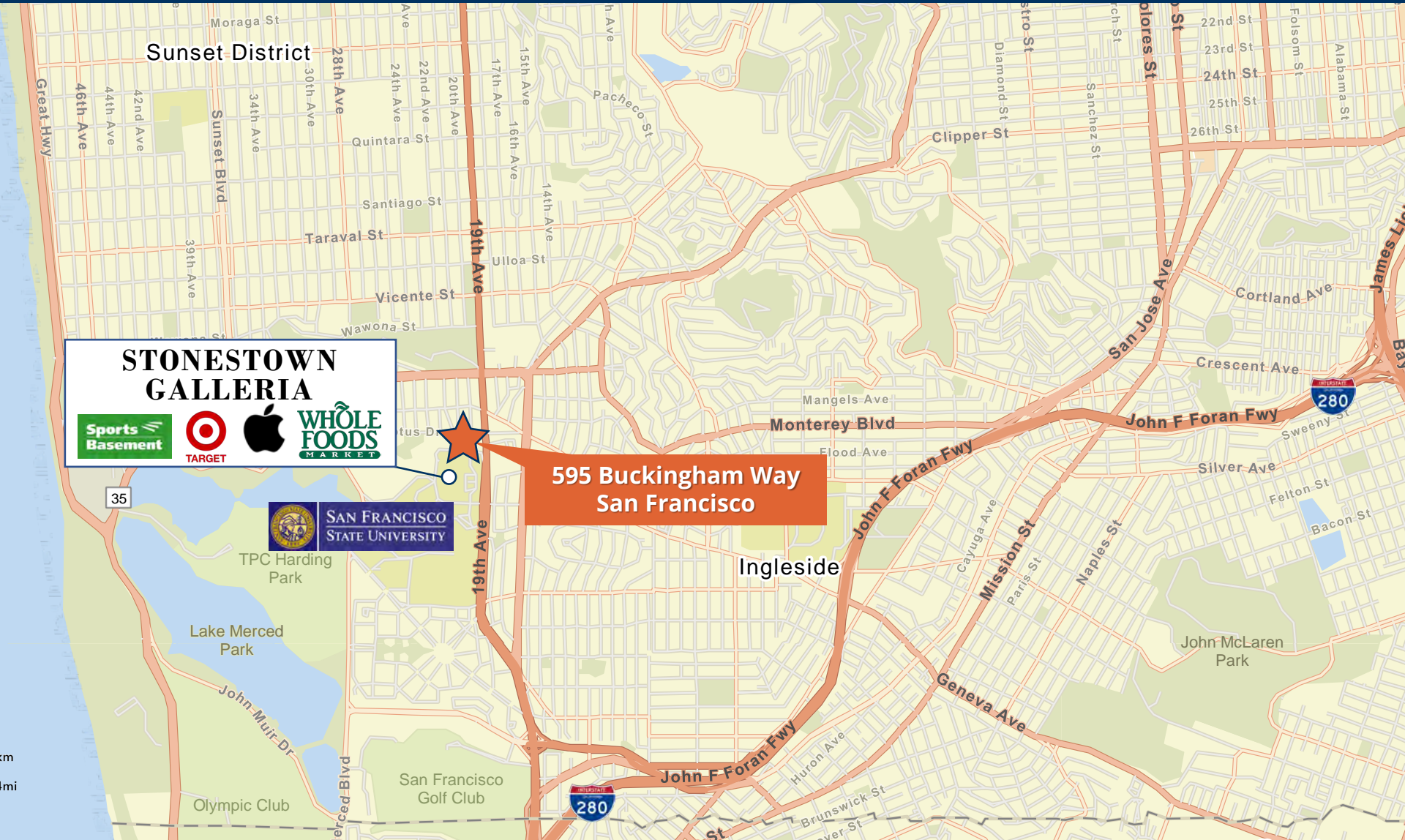
- Stonestown Medical Building represents the highest quality medical/dental building in southwestern San Francisco
- New institutional owners recently completed \$3 million building and common-area renovations
- Improvements include new common areas, lobby and other items
- Professional Medical and Dental Suites from 300 sf to 2,500 sf
- Parking in on-site deck and surface lot
- Patient drop-off area at front entrance
- Excellent views from many suites
- Broad mix of medical and dental users

BAYSIDE REALTY PARTNERS PRESENTS
Stonestown Medical Building
595 Buckingham Way, San Francisco



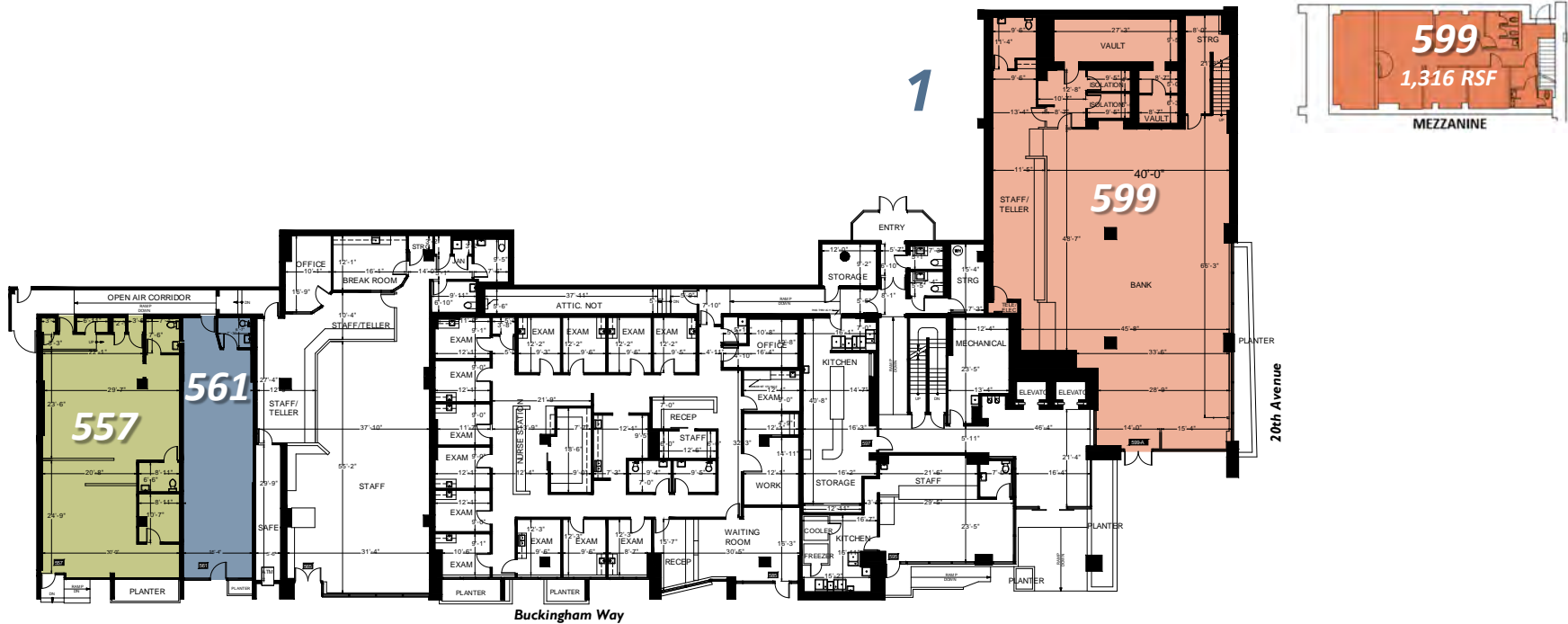
Stonestown Medical Building

595 Buckingham Way, San Francisco



Stonestown Medical Building

595 Buckingham Way, San Francisco



FIRST FLOOR

Suite 557 2,084 RSF

Former WW space with 2 restrooms and open space. Recently upgraded with new flooring and paint. Prominent building signage available.

Adjacent to main parking garage entrance, with plentiful street and surface parking within steps. Possible uses include service commercial, retail, medical office, or food.

Suite 561 1,074 RSF

Retail/street level suite. Shell condition with in-suite restroom

Suite 599 5,930 RSF

High profile retail space with very prominent building signage on prime corner at Stonestown Medical Building across street from Galleria. Free on-site parking, very high ceiling and excellent natural light.

Ground floor - 4,614 RSF
Mezzanine - 1,316 RSF

Stonestown Medical Building

595 Buckingham Way, San Francisco



THIRD FLOOR

Suite 315 410 RSF

Recently appointed suite with one exam room. Ideal for acupuncture, personal services, or therapy

Suite 343 1,375 RSF

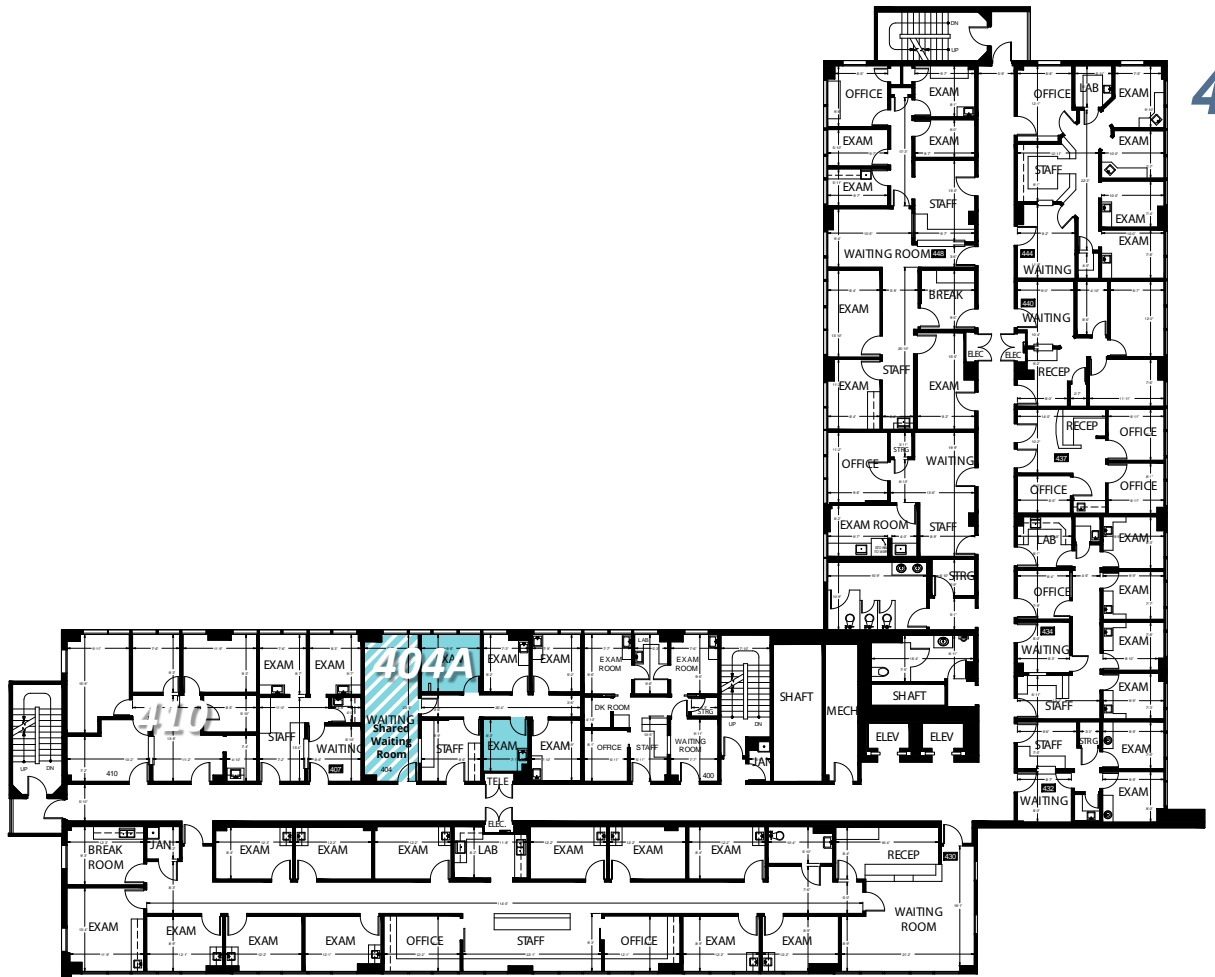
7 large offices and break room with modern build out. On corner of building with excellent natural light

Suite 357 1,063 RSF

Medical office space with reception, waiting area, 3 exam rooms, 1 office

Stonestown Medical Building

595 Buckingham Way, San Francisco



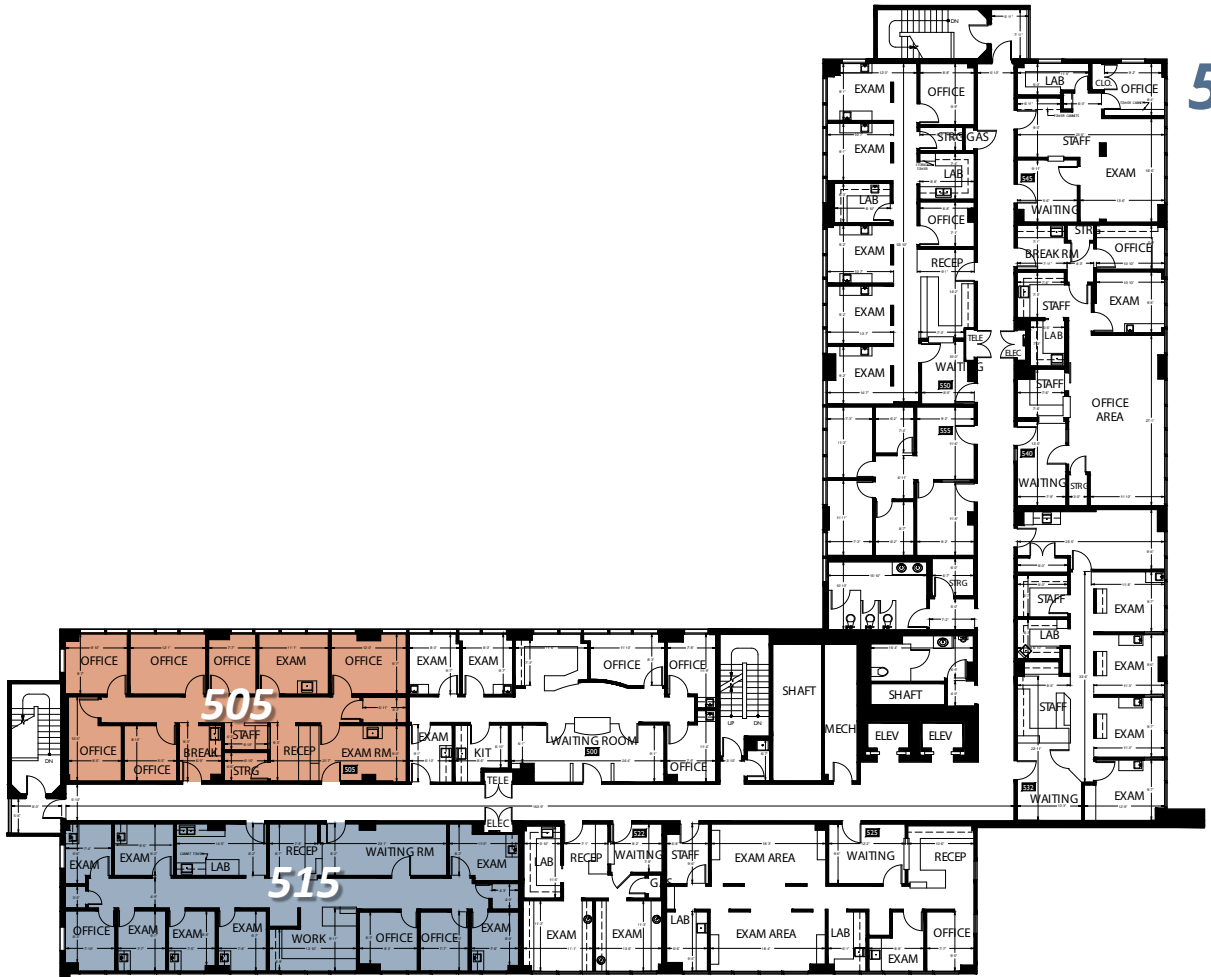
FOURTH FLOOR

Suite 404A 145 RSF

SUBLEASE: 6-12 months. 1 or 2 rooms available. Most medical professions considered. Exam room with sink. Shared waiting room.

Stonestown Medical Building

595 Buckingham Way, San Francisco



FIFTH FLOOR

Suite 505 1,463 RSF

—Sublease—

Sublease through Sept 30, 2025 with additional term available. Very modern build-out with 6 offices, 2 exam room and break room. Located on northwest corner of building on highest floor with views of the ocean. Move-in ready for therapist use

Suite 515 2,053 RSF

Medical office space with 7 exam rooms, 3 offices, kitchen, large waiting room, reception area

Meet Your Expert Team



TRASK LEONARD

President and CEO

650.533.2591

tleonard@baysiderp.com

DRE#01152101



GRACE LINDBERG

Vice President

415.307.0252

glindberg@baysiderp.com

DRE#02230832

DOMINANT. EXPERT. INFLUENTIAL.

BAYSIDE REALTY PARTNERS

The preeminent provider of management, leasing, construction management and accounting services for healthcare properties.



MARKET LEADER

- Leasing & Property Management
- Investment Sales
- Tenant Representation
- Construction Management
- Property Repositioning



INFLUENTIAL NETWORK

- Institutional Investors
- Healthcare Systems and Healthcare Districts
- Physicians & Districts
- Private Investors



DOMINANT FOOTPRINT

- 2 million SF leased & managed
 - 50+ MOB portfolio
 - 10,000-240,000 SF
 - 500,000 SF portfolio
- San Francisco's largest MOBs
- 950+ leases executed
- 500+ medical and dental tenants

DOMINANT. EXPERT. INFLUENTIAL.