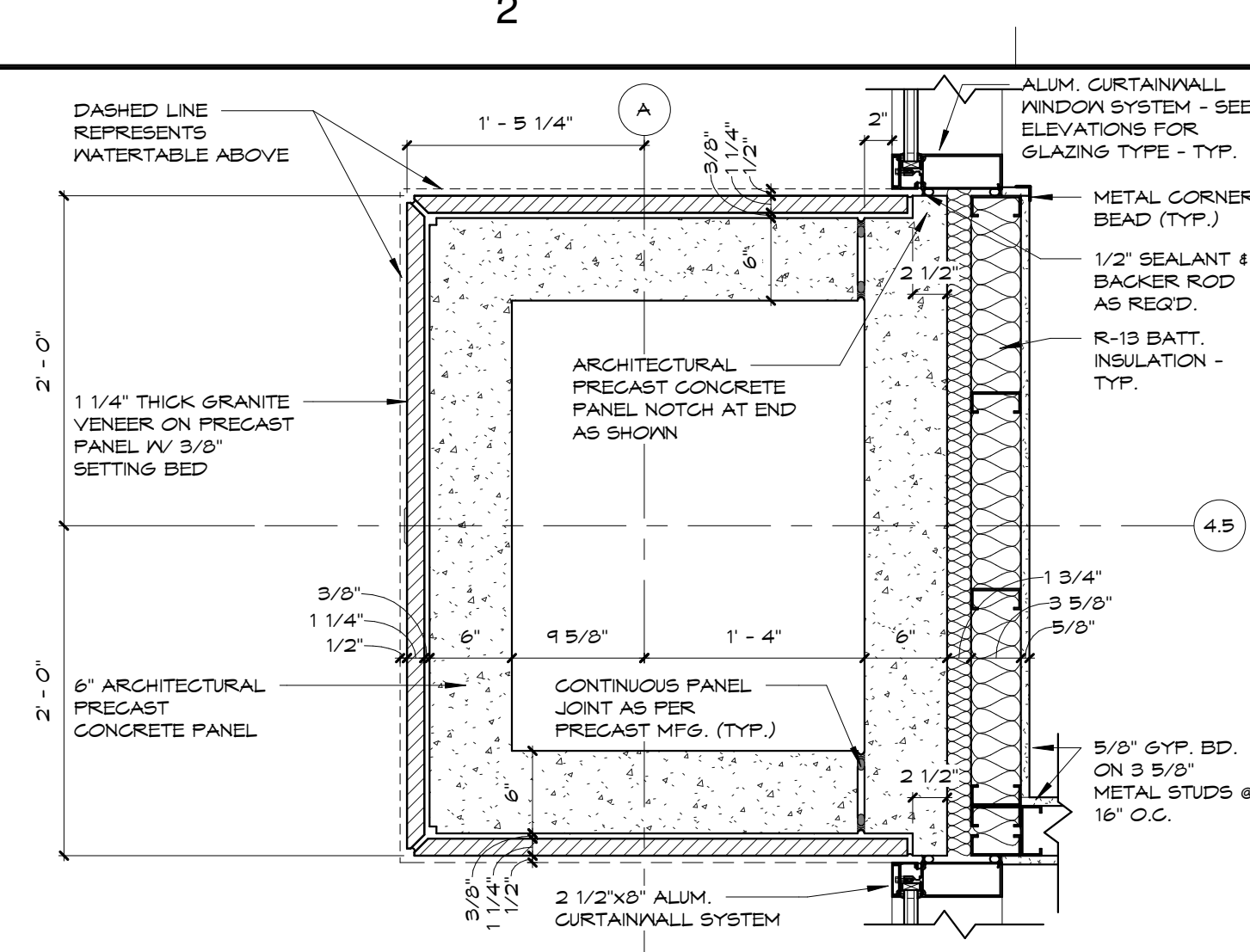
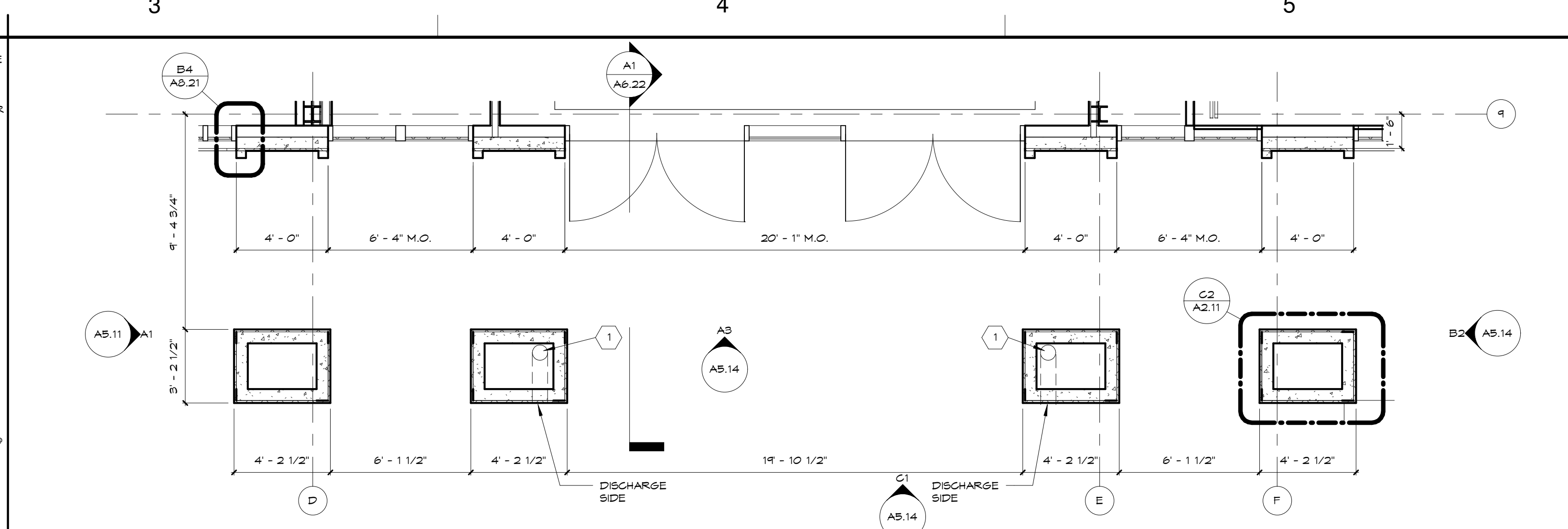


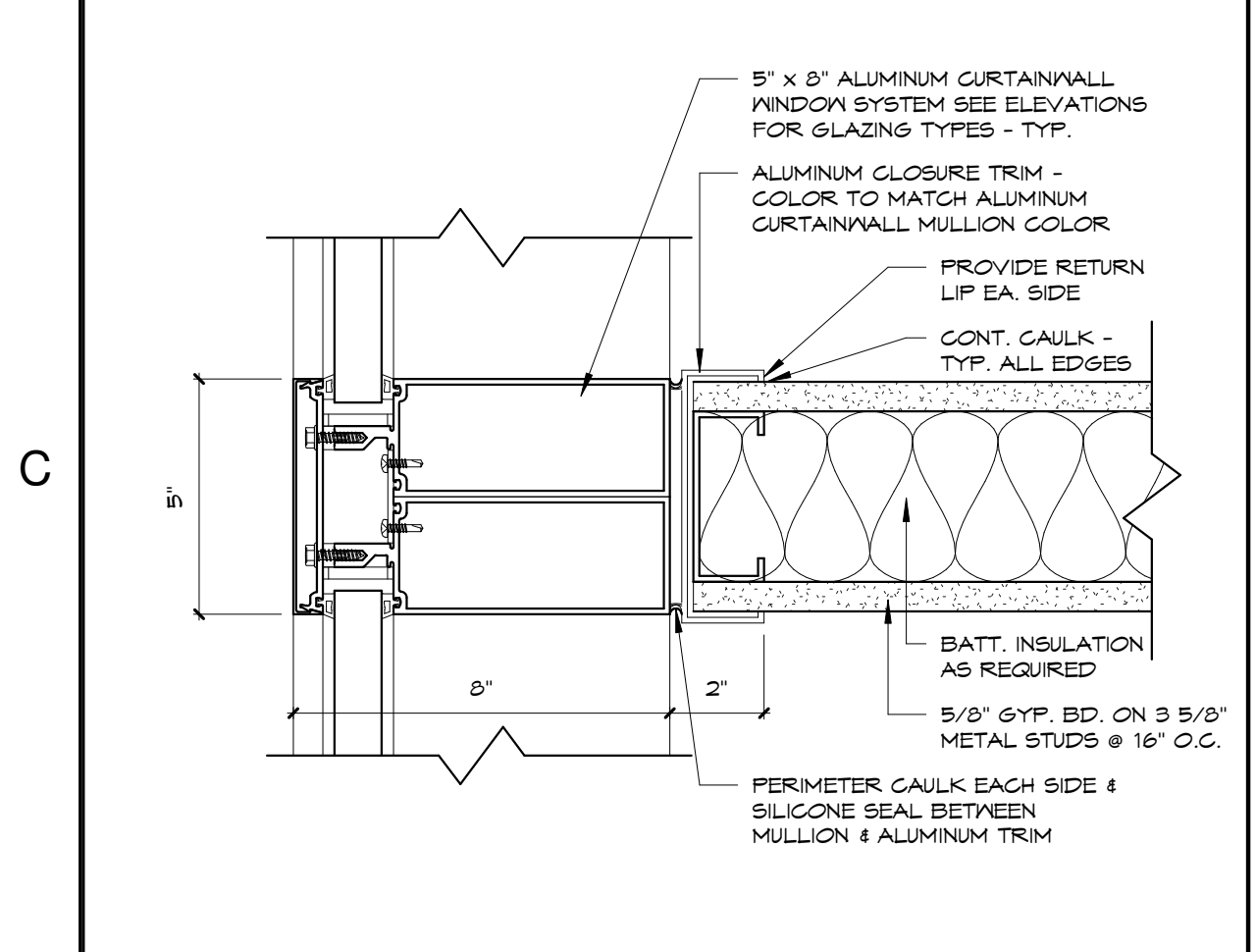
D1 A3/A2.11
1" = 1'-0" **DETAIL @ DRIVE-THRU**



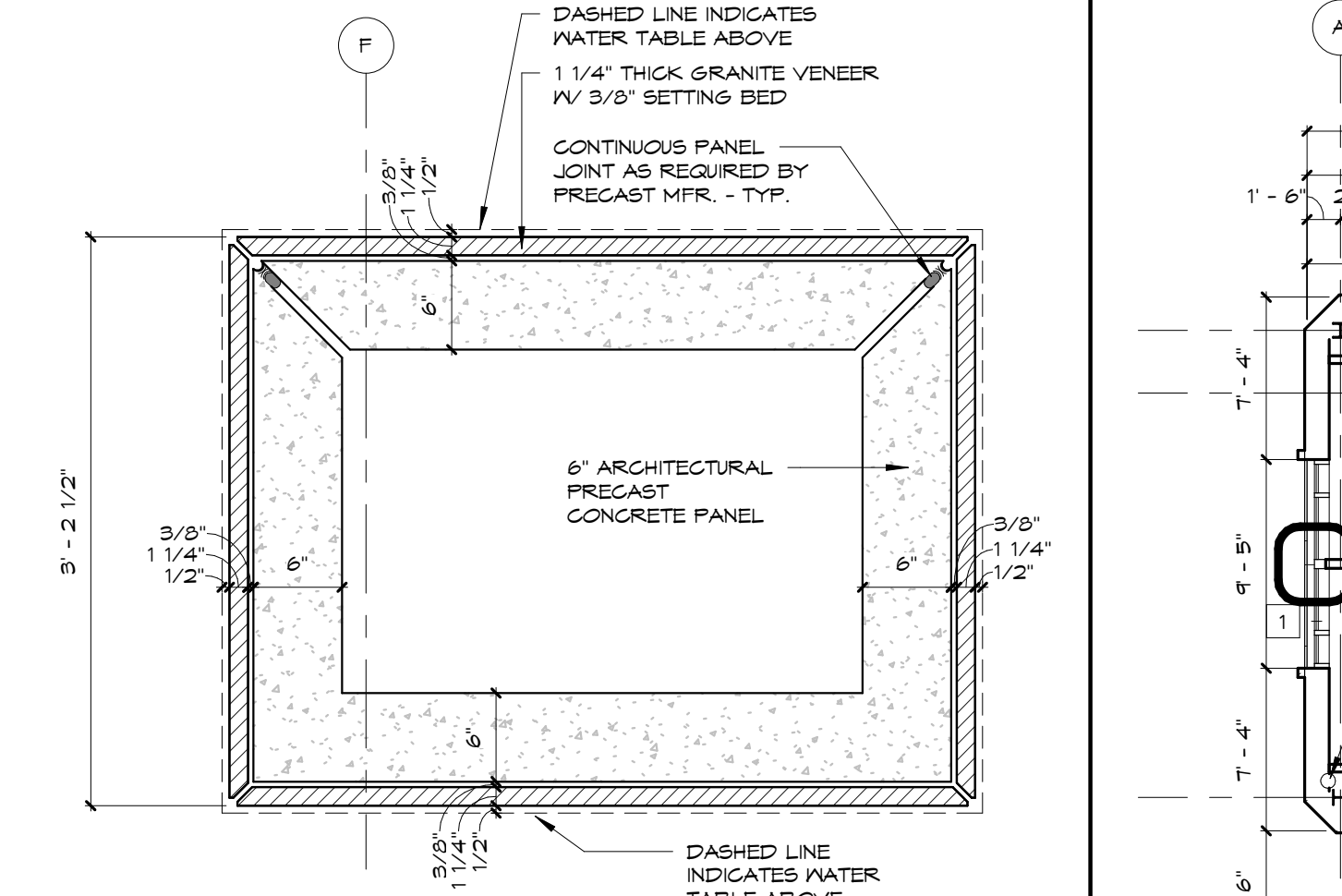
D2 A3/A2.11
1" = 1'-0" **DETAIL @ DRIVE-THRU/BUILDING**



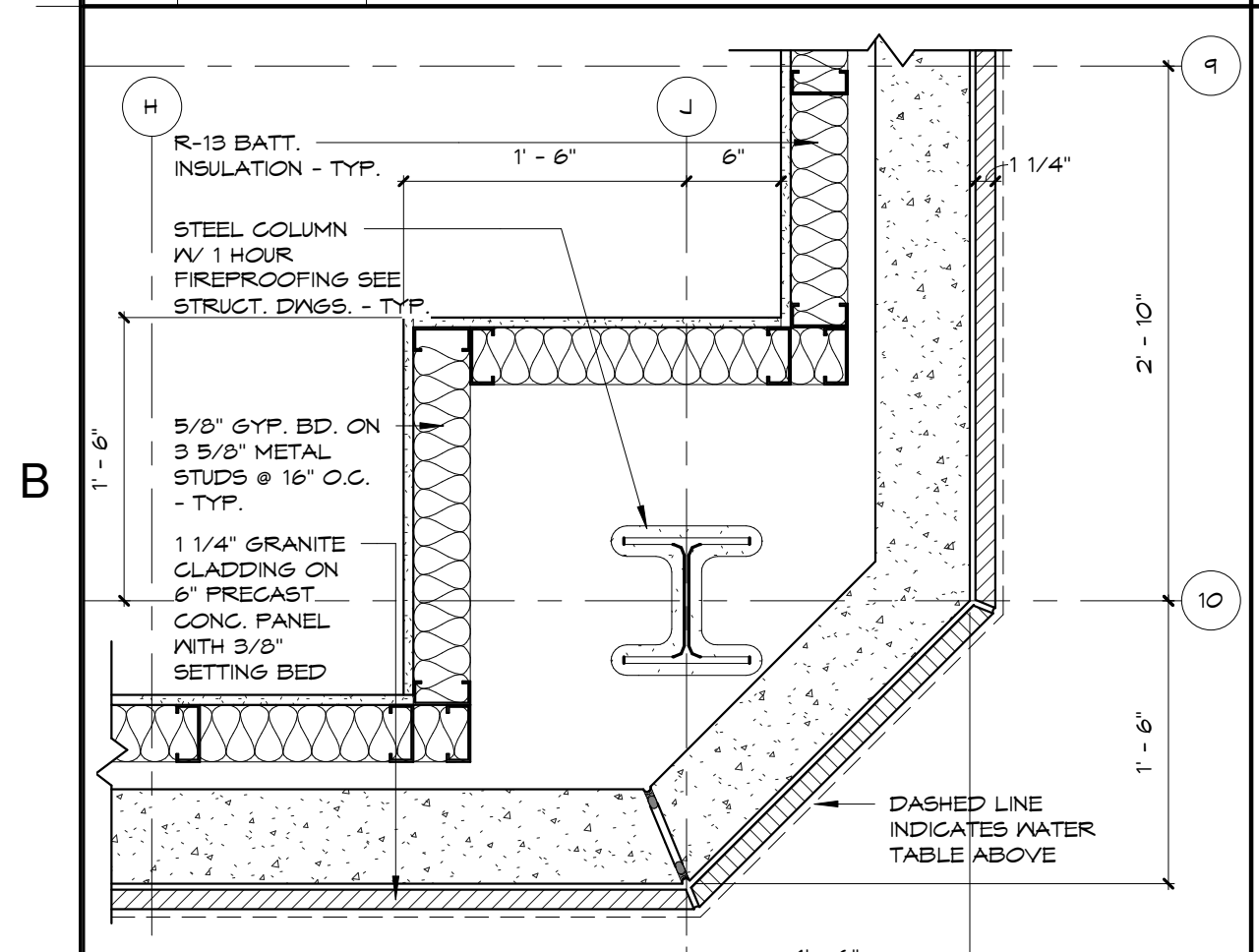
D3 A3/A2.11
1/4" = 1'-0" **ENLARGED ENTRY PORCH PLAN**



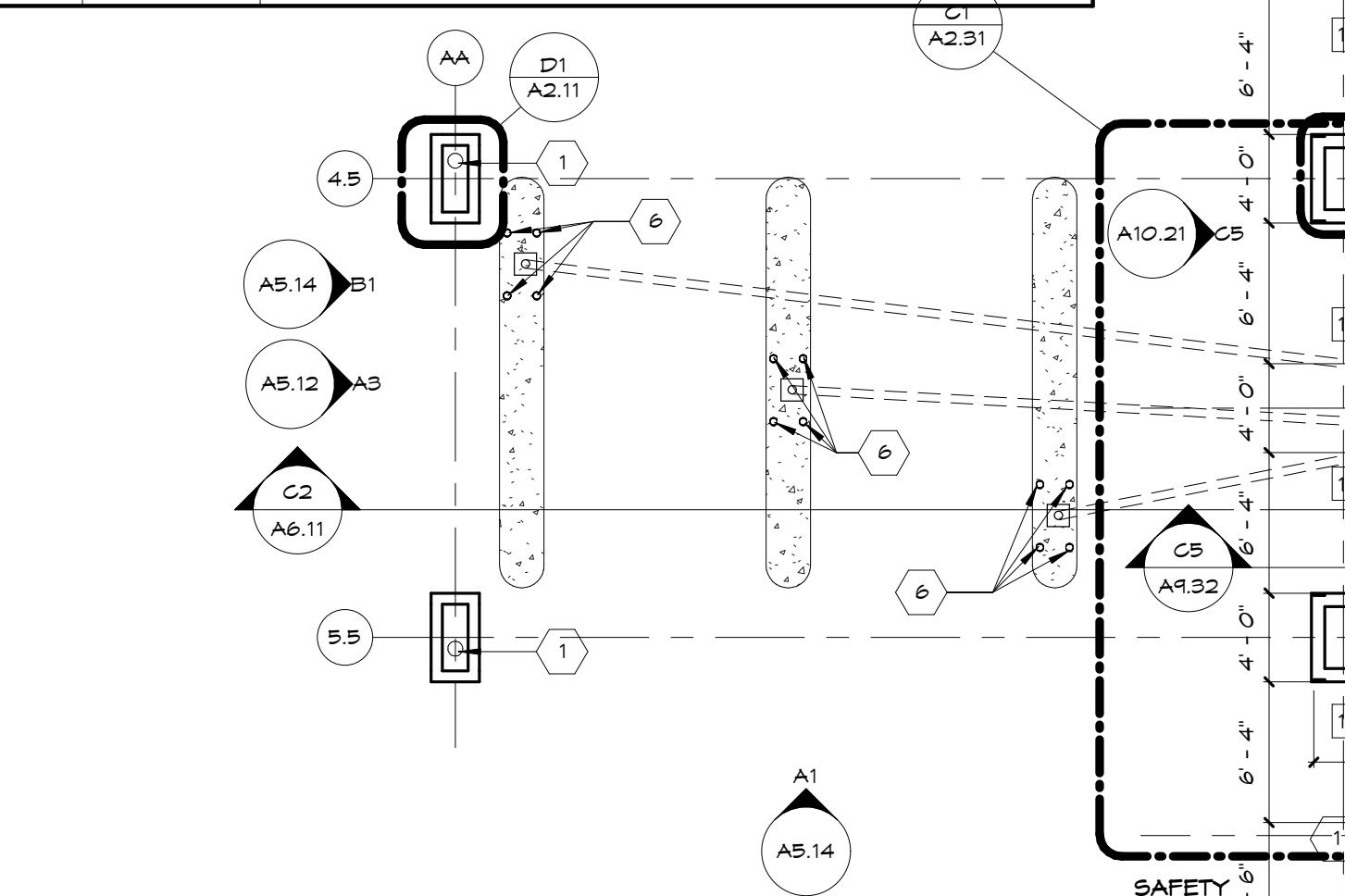
C1 A3/A2.11
3" = 1'-0" **TYPICAL DETAIL @ WALL/MULLION**



C2 D3/A2.11
1" = 1'-0" **PIER DETAIL @ ENTRY**

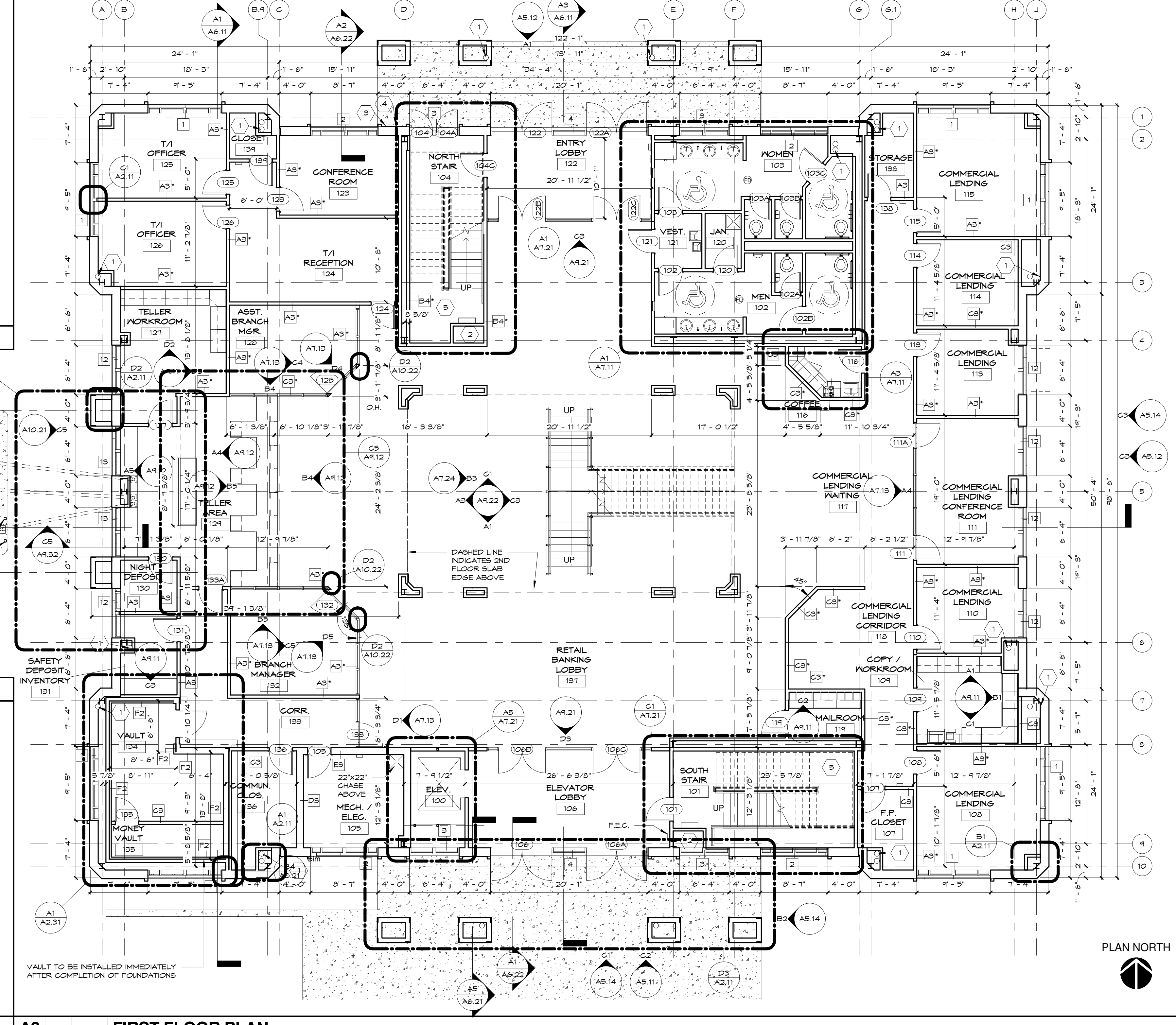


B1 A3/A2.11
1" = 1'-0" **TYPICAL GRANITE CORNER DETAIL**



A1 A3/A2.11
1" = 1'-0" **GRANITE CORNER DETAIL @ ENTRY**

- FLOOR PLAN TAGGED NOTES**
- | TAG # | DESCRIPTION |
|-------|--|
| 1 | PLUMBING RISER LOCATION. SEE DETAILS ON SHEET D1/A2.21. ROUTE PLUMBING FROM ABOVE & BELOW AS REQUIRED TO FIT INTO CONFIGURATION SHOWN. NOTE THAT ALL RISER LOCATIONS HAVE NOT BEEN IDENTIFIED ON ARCHITECTURAL PLANS. S.G. TO COORDINATE W/ MEP DINGS. S.G. TO COORDINATE W/ ARCHITECT PRIOR TO INSTALLATION OF RISERS NOT SHOWN AND IF THERE ARE ANY CONFLICTS WITH ONES SHOWN. |
| 2 | FIRE RISER STANDPIPE. PROVIDE RECESSED CABINET FOR VALVES AND FLOOR CONTROLS |
| 3 | LOCATION OF TEST HEADER. COORDINATE W/ SPRINKLER SHOP DRAWINGS |
| 4 | LOCATION OF RECESSED KNOX BOX. PRECAST MFR. TO PROVIDE CUTOFF AS REQUIRED |
| 5 | LOCATION OF STAIRWELL FAN COL. UNIT. COORDINATE FINAL OPENING SIZE W/ MFR. REQUIREMENTS |
| 6 | 4" DIA. PAINTED STEEL PIPE BOLLARD FILLED W/ CONCRETE - SEE CIVIL DRAWINGS FOR DETAIL & "TRIED/D" REQUIREMENTS. |
| 7 | "WOODFOLD" COUNTERTOP ROLL-UP DOOR |
| 8 | P. LAM. (PL) COUNTERTOP @ CATERING 408 AND SERVING 414 SEE SECTION D4/A3.31 |
| 9 | FIRE DEPARTMENT CONNECTION - SEE ELEVATION FOR LOCATION |
| 10 | TRANSFORMER PAD |
| 11 | WHEEL STOP - SEE CIVIL DRAWINGS FOR DETAIL |
| 12 | "LAPEYRE" ALTERNATING TREAD ROOF ACCESS STAIR 16'-0" HEIGHT W/ 68 DEGREE AND FLUSH HANDRAIL |
| 13 | SEAL WINDOW WITH 1/4" GYP. BD. ON 1 5/8" METAL STUDS @ 16" O.C. |



A3 1/8" = 1'-0" **FIRST FLOOR PLAN**

McMillan Smith & Partners
Architects, PLLC

Post Office Box 5331
Spartanburg SC 29304
864.585.5678 Fax 864.542.9451
www.mcmillansmith.com

The Palmetto Bank
306 EAST NORTH ST.
GREENVILLE SC

Project Name: _____

REVISIONS:

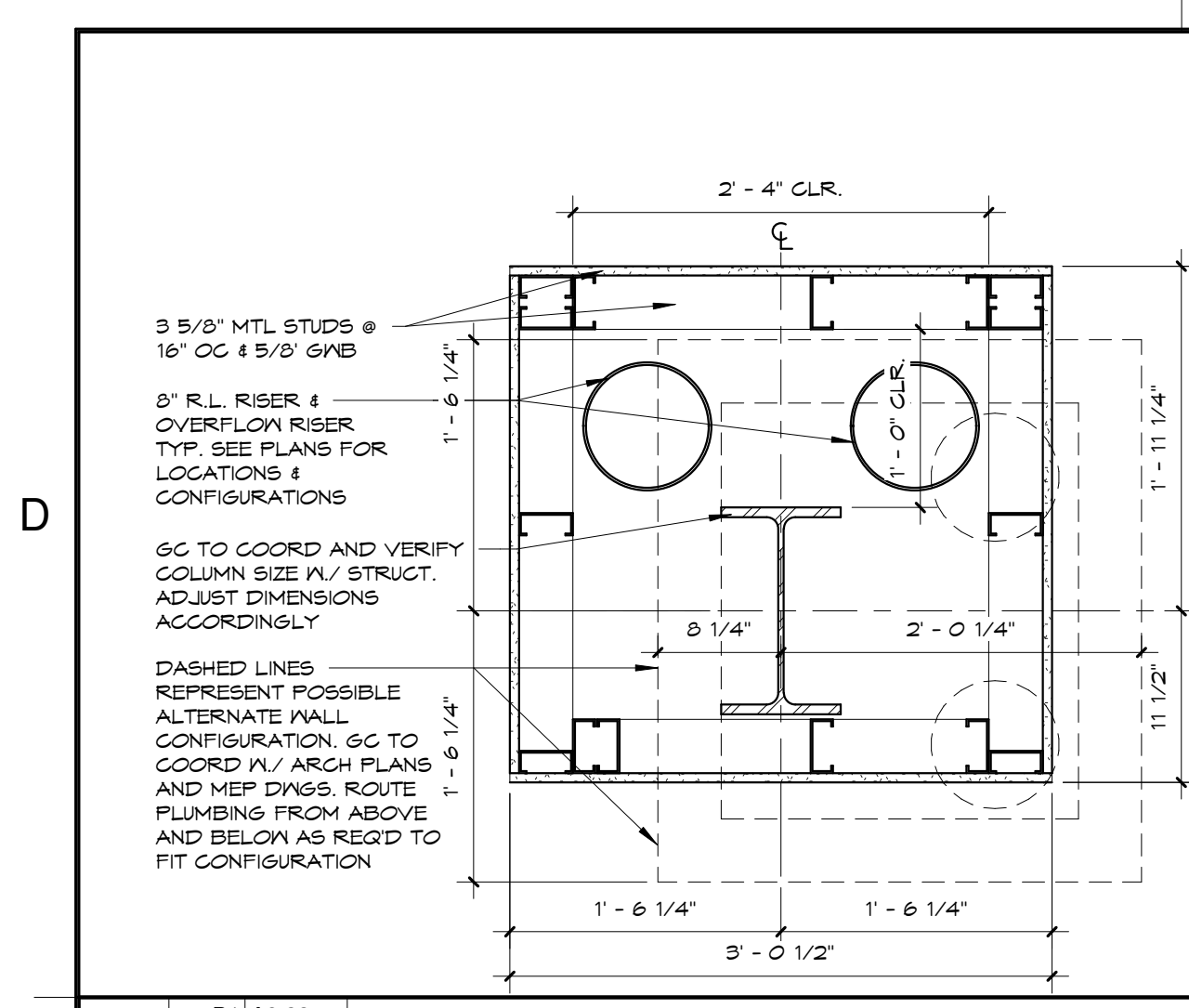
NO.	DATE	DESCRIPTION	BY

CONSTRUCTION DOCUMENTS

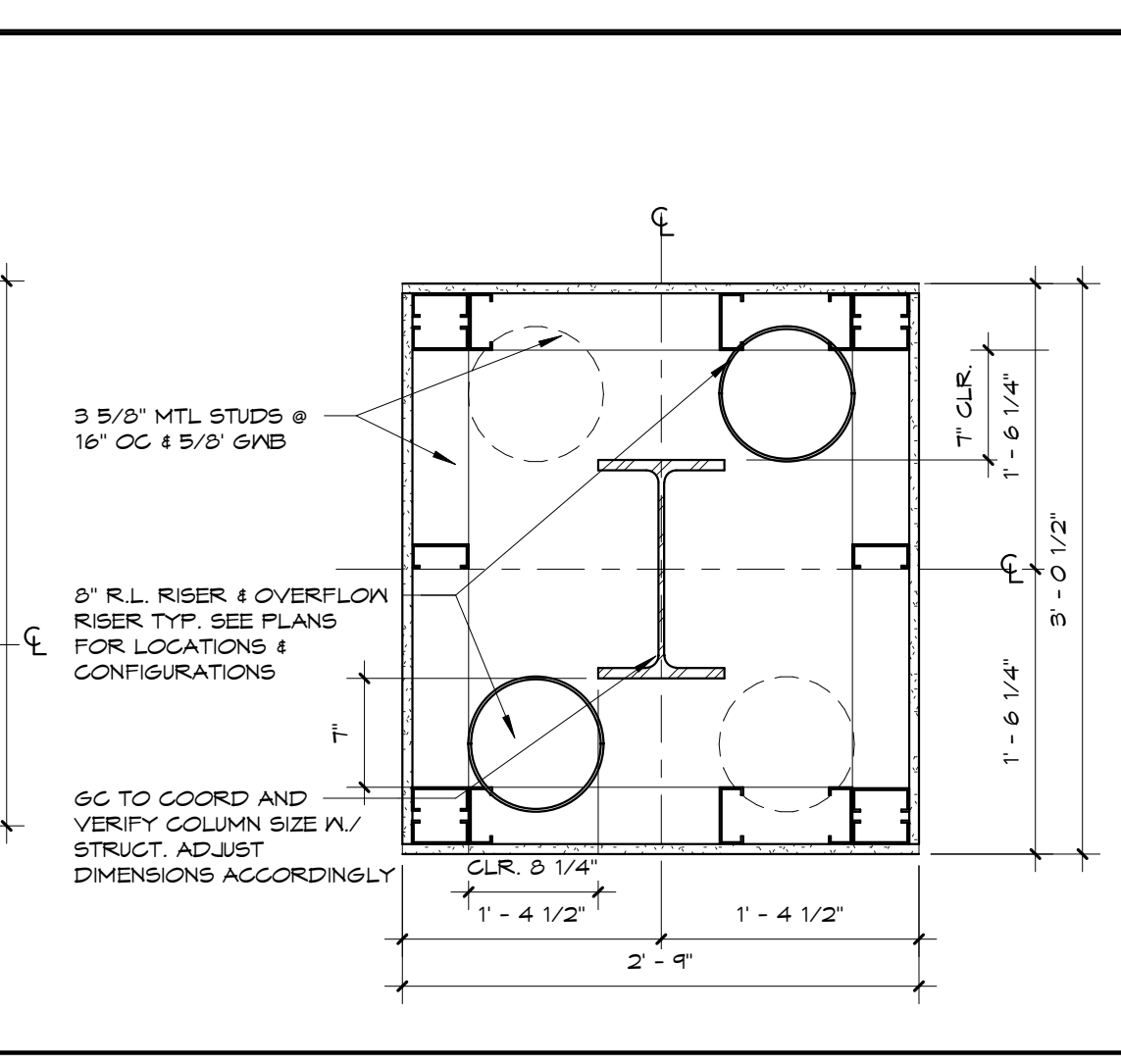
Principal in Charge: RCP
Project Architect: KAJ
Drawn By: MSM, RN, SN

Sheet Title:
FIRST FLOOR PLAN

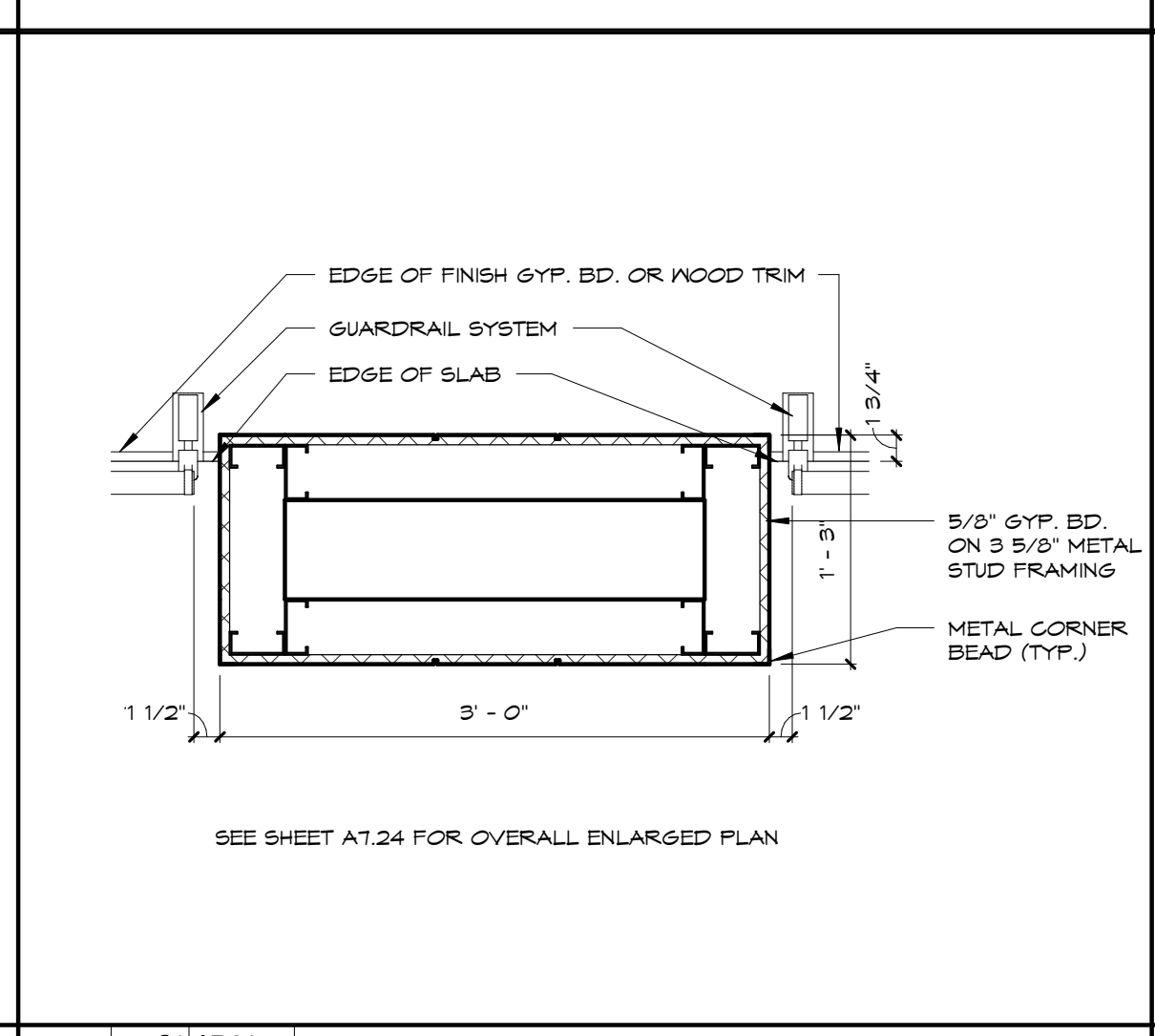
Sheet Number: **A2.11** Project No: 06045
Date: 06/07/07



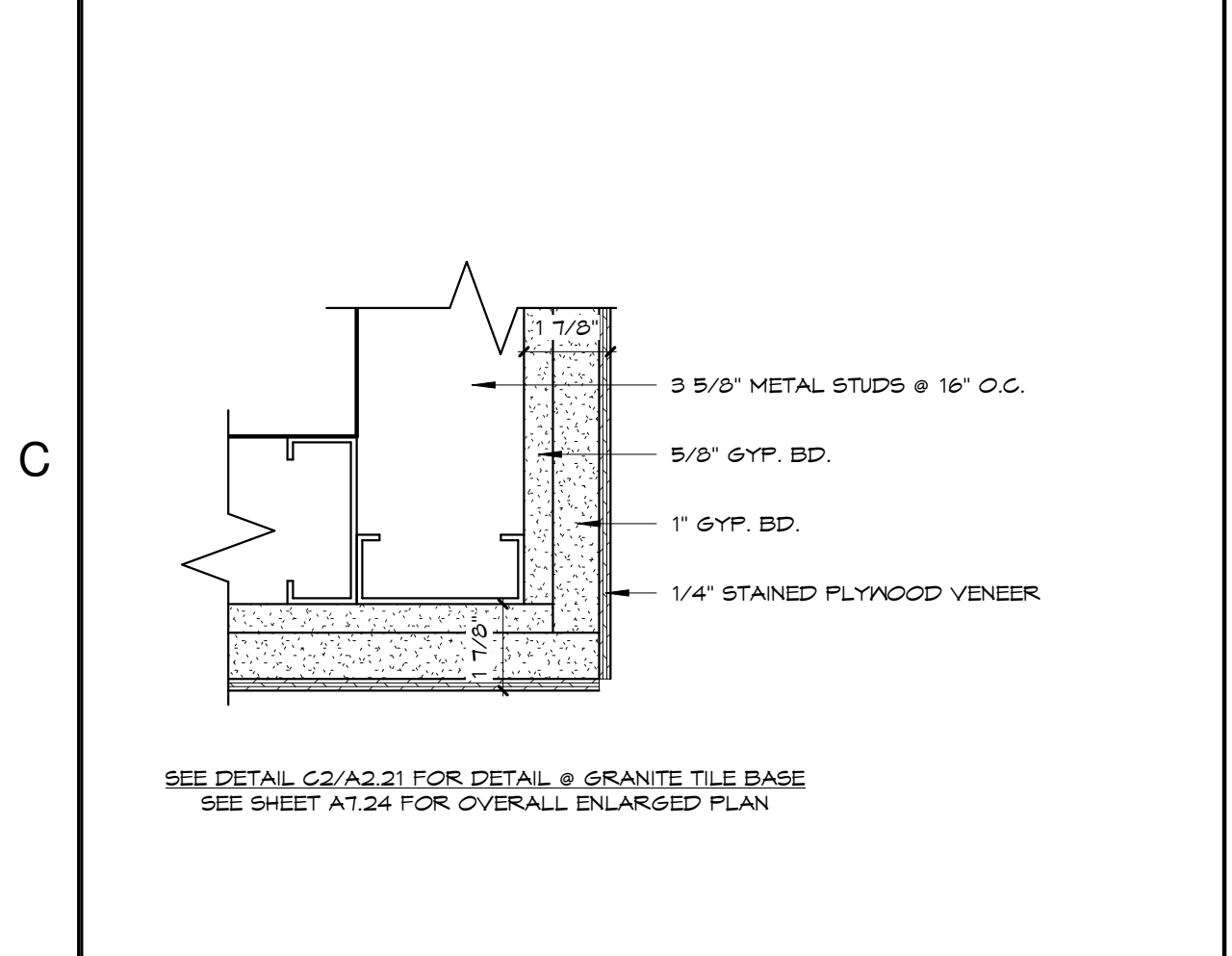
D1 B1/A8.22
1" = 1'-0" **PLUMBING RISER FURR-OUT**



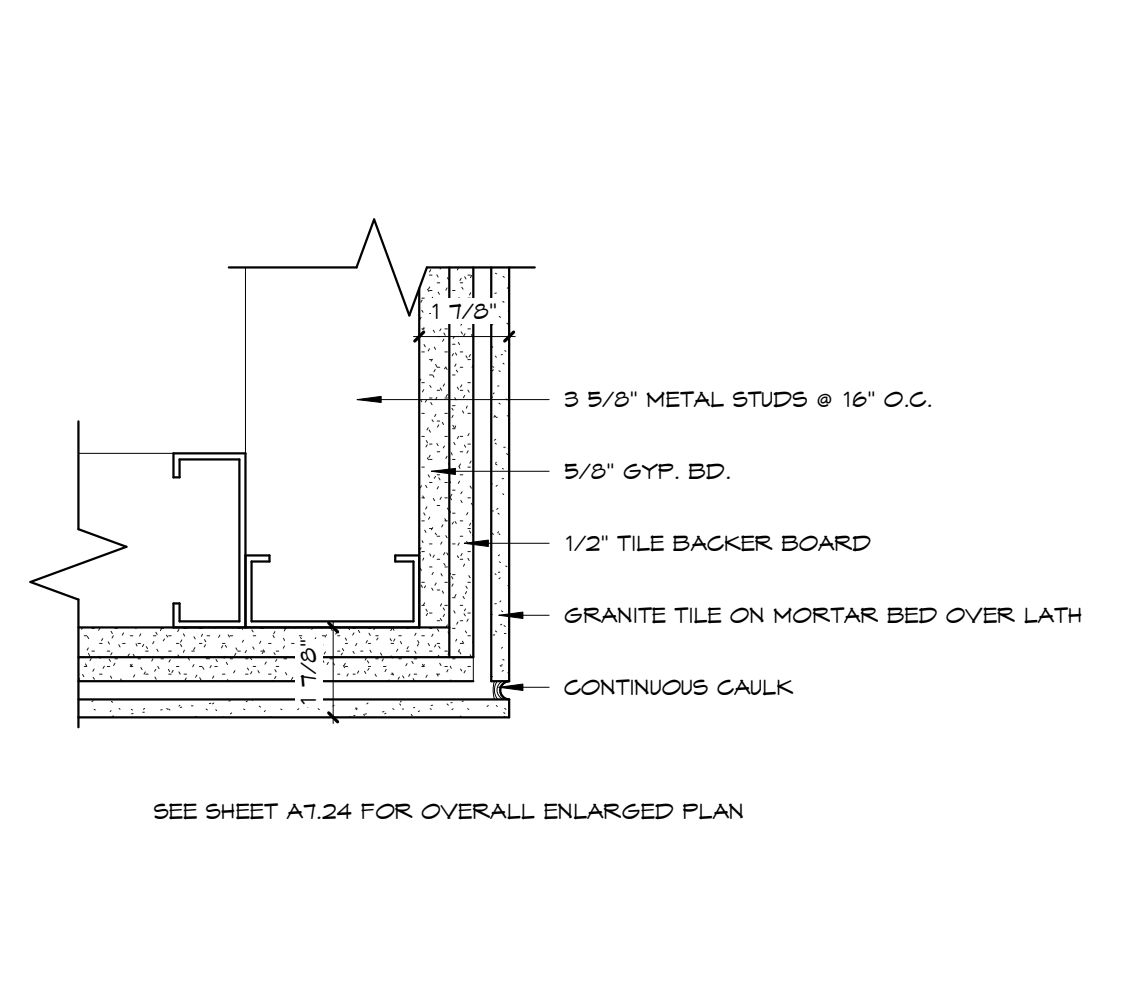
D3 A1/A9.22
1 1/2" = 1'-0" **LOBBY PIER SECTION**



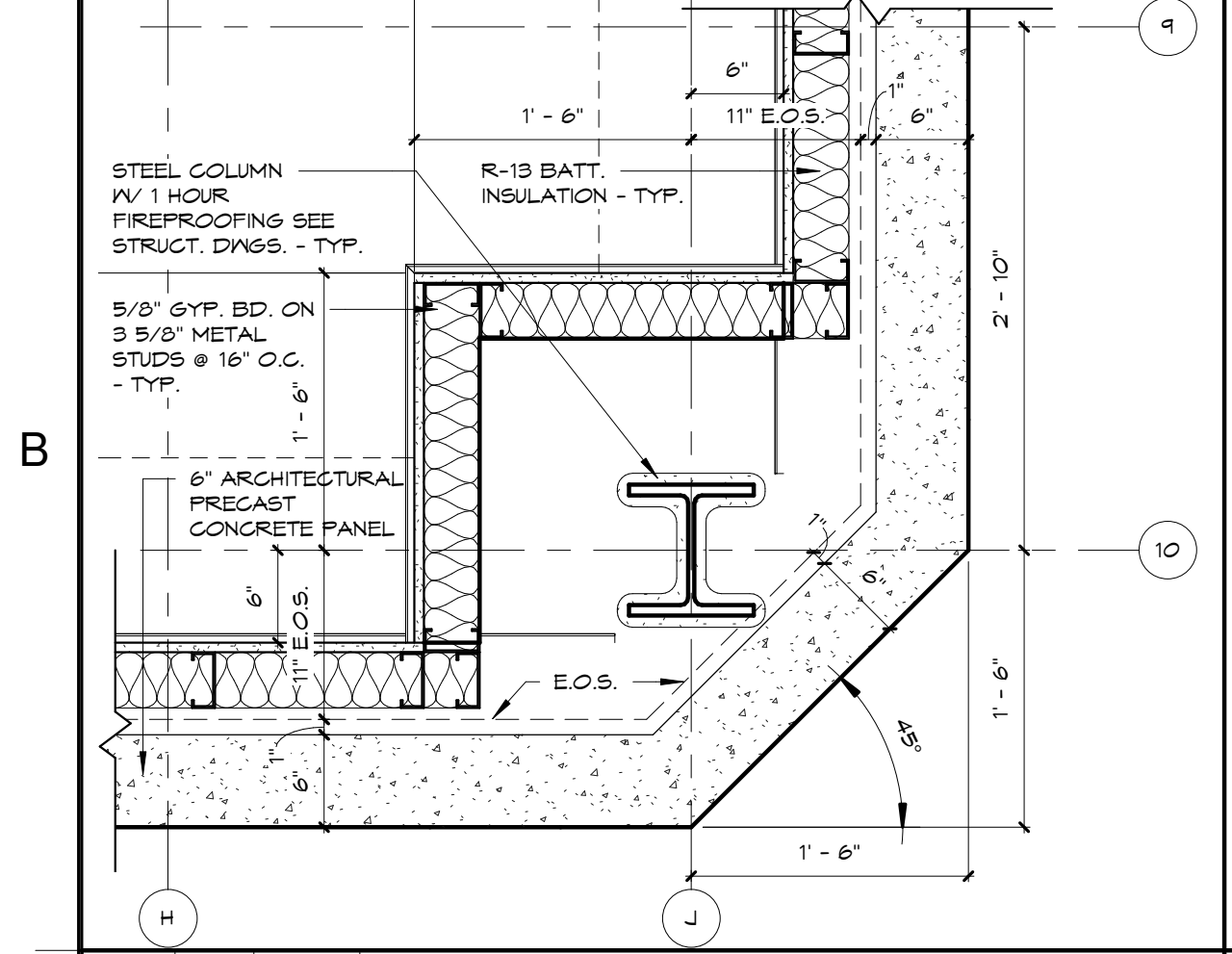
D4 C1/A7.24
1" = 1'-0" **TYPICAL STAIR RAILING DETAIL**



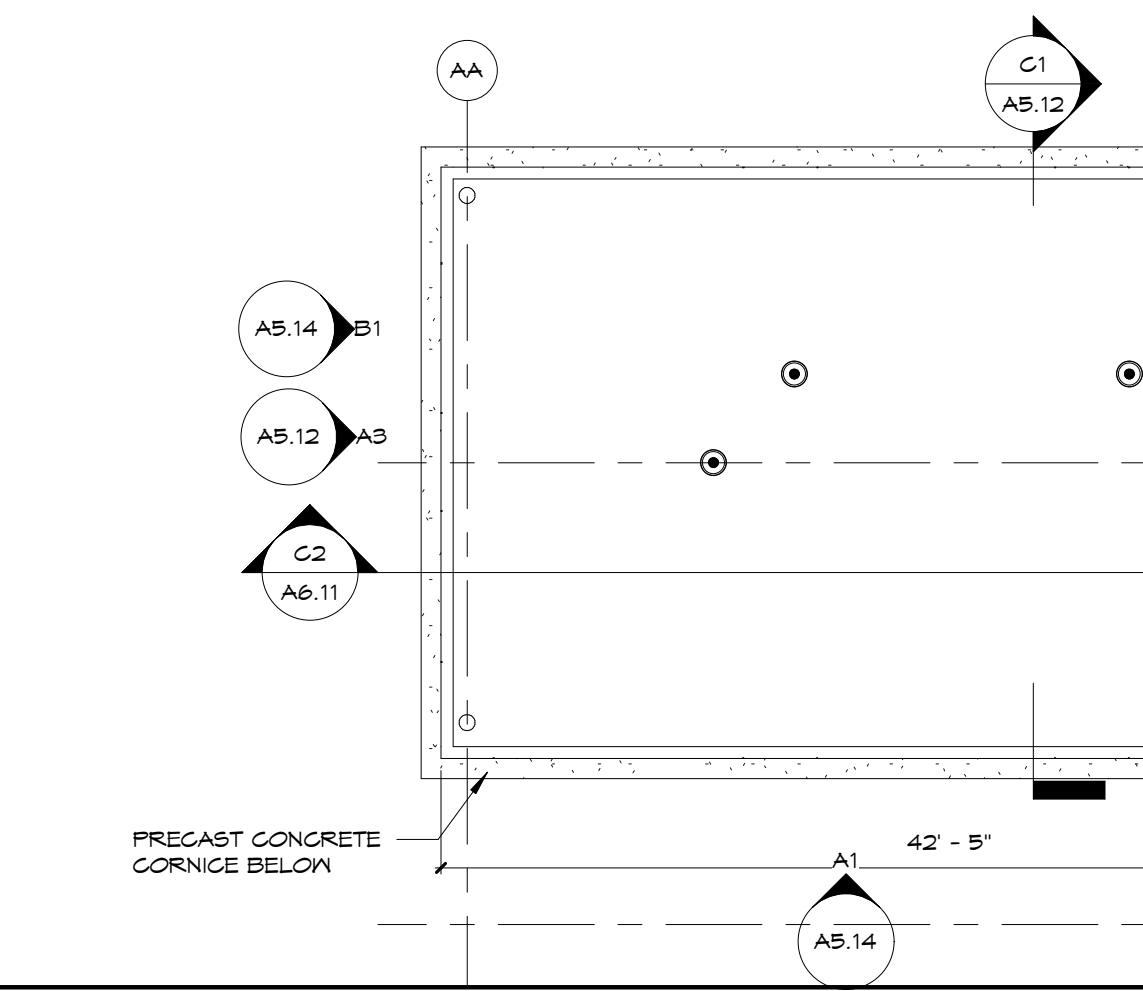
C1 B5/A7.24
3" = 1'-0" **LOBBY PIER DET. @ WOOD VENEER**



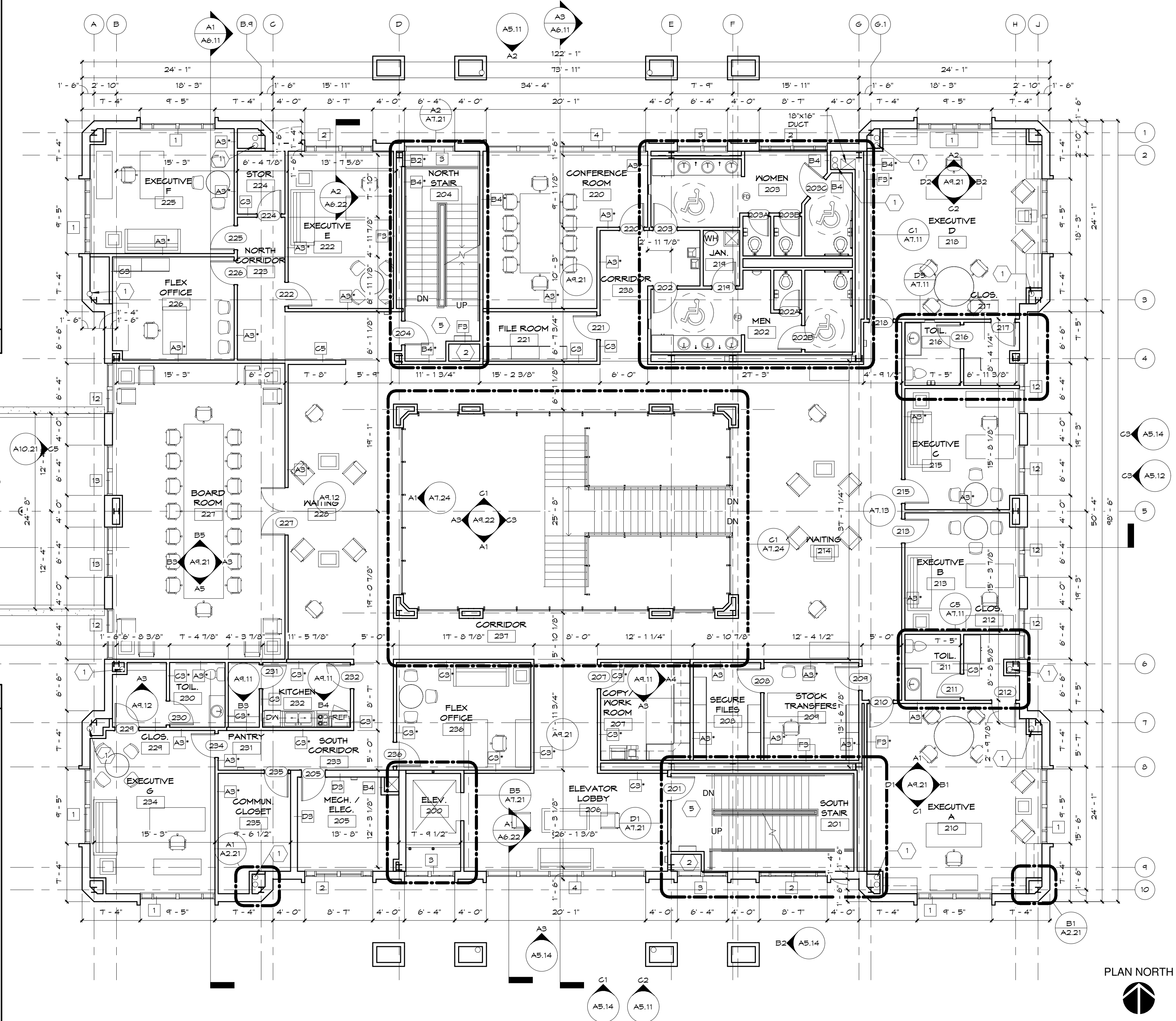
C2 3" = 1'-0" **LOBBY PIER DETAIL @ GRANITE**



B1 A3/A2.21
1" = 1'-0" **TYPICAL PRECAST CORNER DETAIL**



A1 A3/A2.21
1" = 1'-0" **PRECAST CORNER DET. @ ENTRY**



A3 A1/A5.11
1/8" = 1'-0" **SECOND FLOOR PLAN**

- FLOOR PLAN TAGGED NOTES**
- 1 PLUMBING RISER LOCATION. SEE DETAILS ON SHEET D1/A2.21. ROUTE PLUMBING FROM ABOVE & BELOW AS REQUIRED TO FIT INTO CONFIGURATION SHOWN. NOTE THAT ALL RISER LOCATIONS HAVE NOT BEEN IDENTIFIED ON ARCHITECTURAL PLANS. S.C. TO COORDINATE W/ MEP DWGS. S.C. TO COORDINATE W/ ARCHITECT PRIOR TO INSTALLATION OF RISERS NOT SHOWN AND IF THERE ARE ANY CONFLICTS WITH ONES SHOWN.
 - 2 FIRE RISER STANDPIPE. PROVIDE RECESSED CABINET FOR VALVES AND FLOOR CONTROLS.
 - 3 LOCATION OF TEST HEADER. COORDINATE W/ SPRINKLER SHOP DRAWINGS.
 - 4 LOCATION OF RECESSED KNOX BOX. PRECAST MFR. TO PROVIDE CUTOUT AS REQUIRED.
 - 5 LOCATION OF STAIRWELL FAN COIL UNIT. COORDINATE FINAL OPENING SIZE W/ MFR. REQUIREMENTS.
 - 6 4" DIA. PAINTED STEEL PIPE BOLLARD FILLED W/ CONCRETE - SEE CIVIL DRAWINGS FOR DETAIL 4 "DIEBOLD" REQUIREMENTS.
 - 7 "WOODFOLD" COUNTERTOP ROLL-UP DOOR.
 - 8 P. LAM. (PL) COUNTERTOP AT CATERING 408 AND SERVING 414 SEE SECTION D4/A4.31
 - 9 FIRE DEPARTMENT CONNECTION - SEE ELEVATION FOR LOCATION
 - 10 TRANSFORMER PAD
 - 11 WHEEL STOP - SEE CIVIL DRAWINGS FOR DETAIL
 - 12 "LAPEYRE" ALTERNATING TREAD ROOF ACCESS STAIR 16'-0" HEIGHT W/ 60 DEGREE AND FLUSH HANDRAIL
 - 13 SEAL WINDOW WITH 1/4" GYP. BD. ON 1 5/8" METAL STUDS @ 16" O.C.

A1 A3/A2.21
1" = 1'-0" **PRECAST CORNER DET. @ ENTRY**

NOT USED

McMillan Smith & Partners
Architects, PLLC

Consultant Logo:



Project Name:

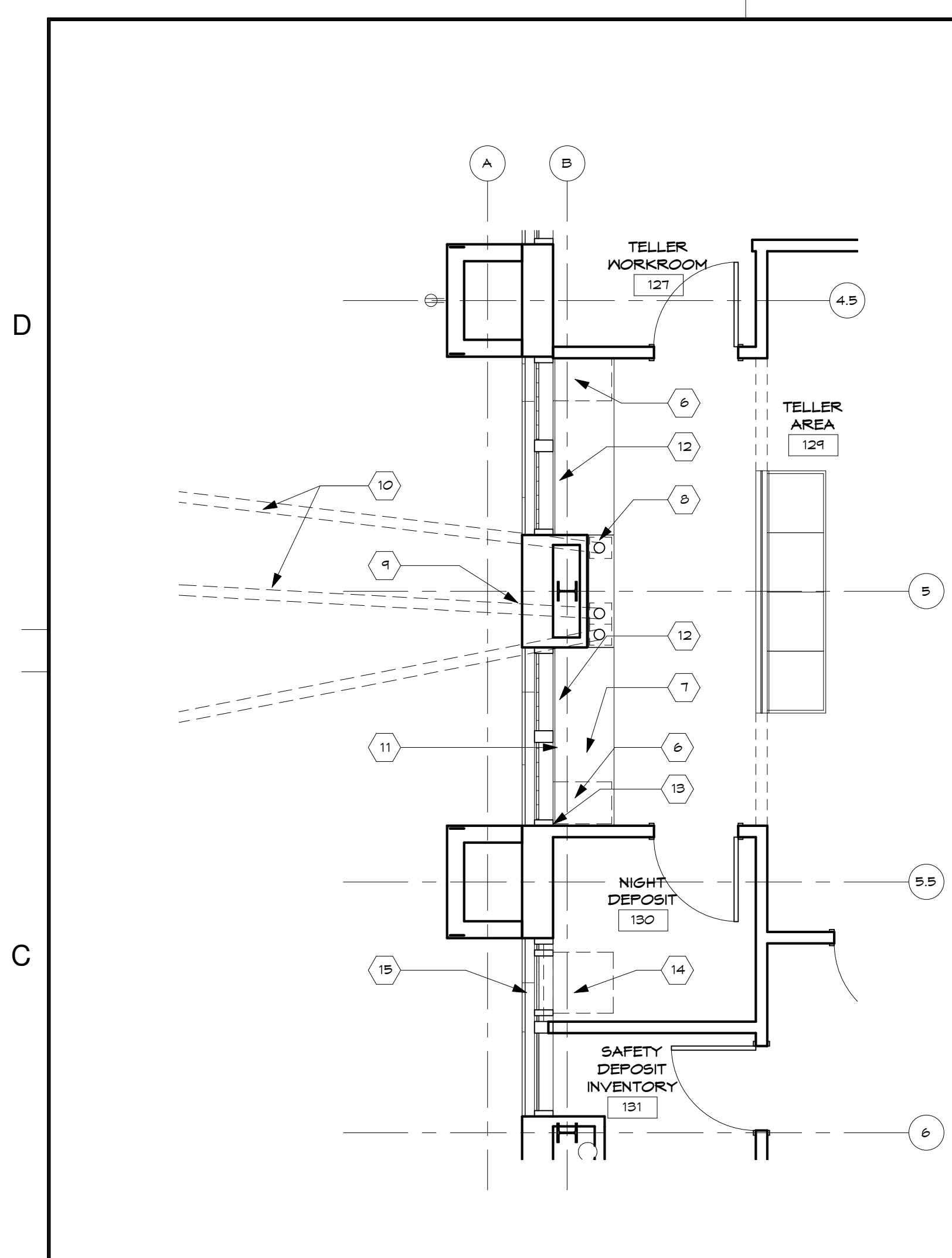
REVISIONS:		
NO.	DATE	DESCRIPTION

CONSTRUCTION DOCUMENTS
Principal in Charge: RCP
Project Architect: KAJ
Drawn By: MSM, RN, SN

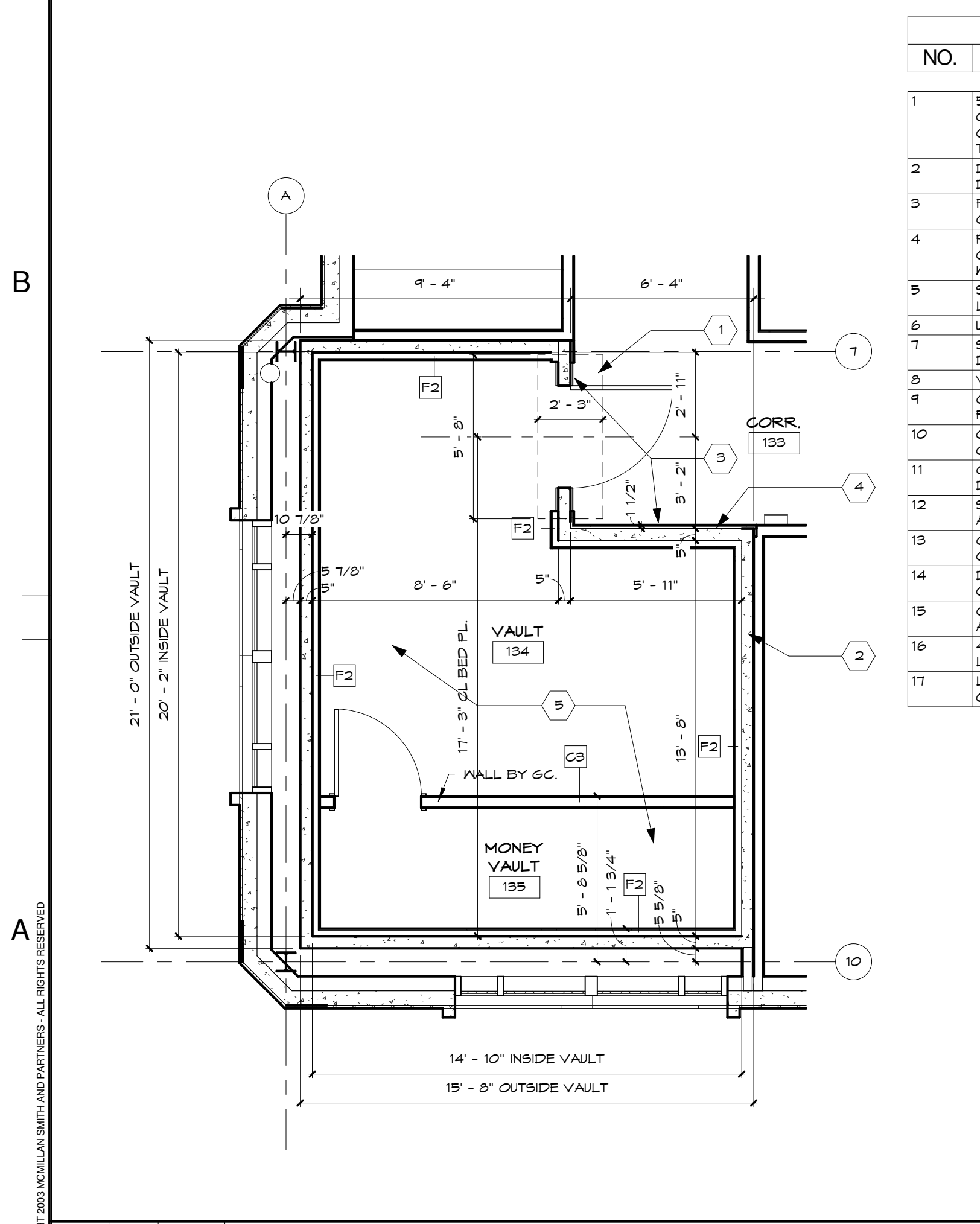
Sheet Title:
SECOND FLOOR PLAN

Sheet Number: **A2.21**
Project No: 06045
Date: 06/07/07

Post Office Box 5331
Spartanburg SC 29304
864.585.5678 Fax 864.542.9451
www.mcmillansmith.com



C1 A3/A2.11
1/4" = 1'-0" **ENLARGED PLN OF TELLERLINE @ DRIVE-THRU**



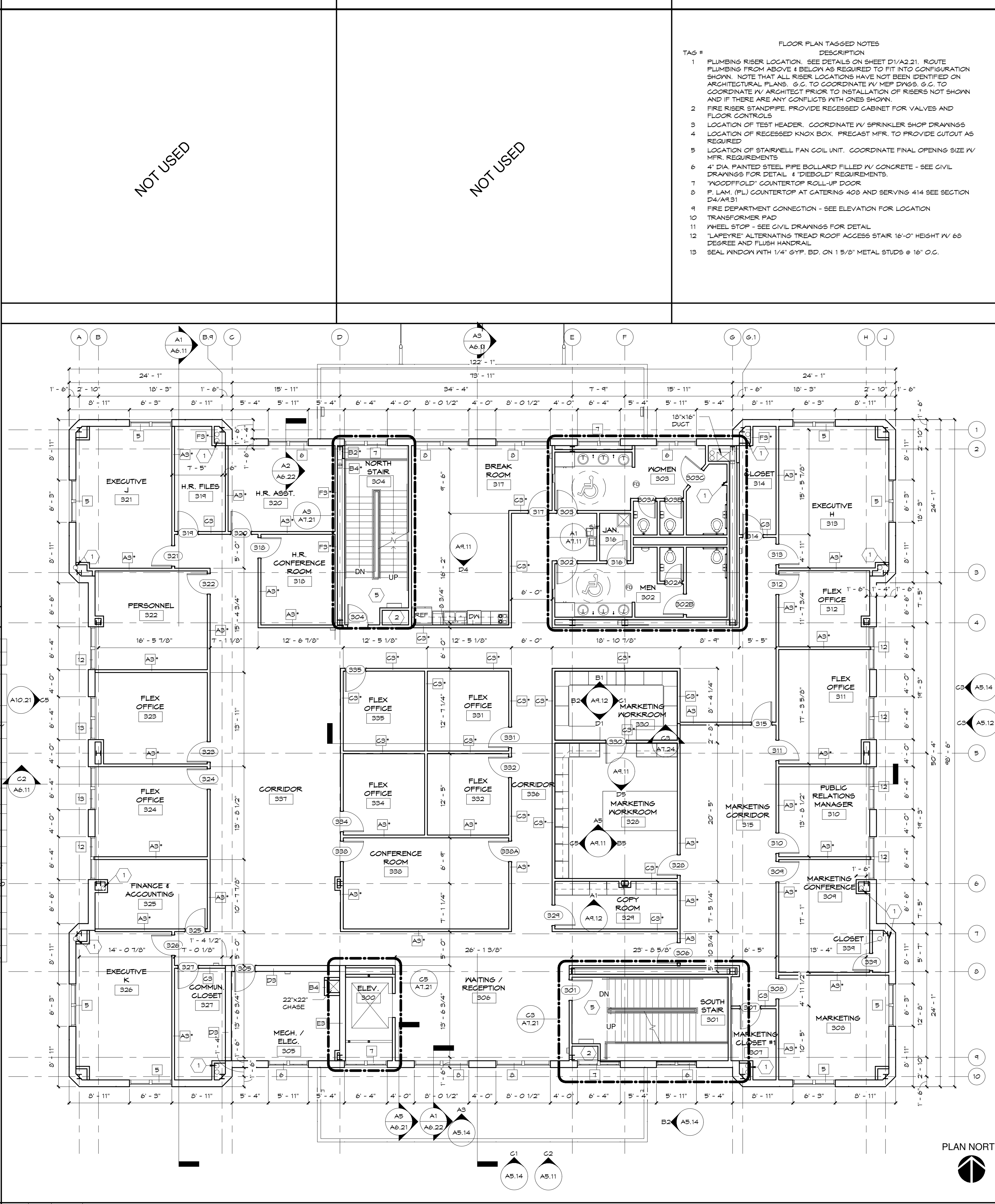
A1 A3/A2.11
1/4" = 1'-0" **VAULT LAYOUT PLAN**

NO.	COMMENTS
1	5'-0"X2'-3" STL BED PLATE 4 ANCHORS F#1 BY GC, FLUSH W/ FIN CONCRETE FLOOR. COORD 4 LOCATE PER DIEBOLD DWGS. IT IS CRUCIAL THAT BED PLATE IS LOCATED PROPERLY FOR SETTING OF THE VAULT DOOR.
2	DIEBOLD TO F#1 FLOOR SHOE PLATE FOR PRECAST VAULT. SEE DIEBOLD DWGS
3	FINISH ON EXTERIOR VAULT DOOR 4 PERIMETER WALLS TO BE INST. BY GC AS INDICATED BY DIEBOLD DWGS.
4	PERIMETER EXPOSED WALL TO BE FINISHED W/ 1/2" FURRING CHANNELS AND 5/8" G&B TO 6" ABOVE CEILING. FINISH TO BE FLUSH W/ SURROUNDING FINISHES
5	SEE DIEBOLD DWGS FOR LOCATION OF ELECTRICAL CONDUIT LOCATIONS 4 HVAC TDUCT TIE INS 4 J-BOX REQUIREMENTS
6	UNDERCOUNTER CABINET F#1 BY DIEBOLD
7	SEE DIEBOLD DWGS FOR COUNTER MNTD EQUIPMENT. COORD W/ DIEBOLD 4 OWNER FOR ANY REQD GROMMETS LOCATIONS
8	VAT TELLER EQUIP F#1 DIEBOLD.
9	GC TO COORD LOCATION OF PNEUMATIC TUBE 4 CONDUIT PENETRATIONS W/ PRECAST SHOP DWGS.
10	OVERHEAD PNEUMATIC TUBE RISERS 4 RINS ROUTED ABOVE CLING CANOPY. SEE DIEBOLD DWGS
11	GC TO F#1 UNDER COUNTER FLOOR CONDUIT STUB UPS AS REQD BY DIEBOLD
12	SEE DIEBOLD DWGS FOR UNDERCOUNTER MNT CONTROLLER BOXES AUDIO EQUIP
13	GC TO PROVIDE SURFACE MNTD WIRE CHASE FOR VAT, AUDIO 4 VIDEO CABLES
14	DEPOSIT CHEST F#1 BY DIEBOLD. GC TO PROVIDE 1'-1" HIGH CONCRETE PEDESTAL AS INDICATED BY DIEBOLD DWGS
15	GC TO COORD 4 MODIFY STOREFRONT SYSTEM SHOP DWGS TO ACCOMMODATE NIGHT DEPOSIT BOX INSERT
16	4" OD CONC FILLED POSTS F#1 BY GC. SEE DIEBOLD DWGS FOR LAYOUT REQUIREMENTS. TYP AT DRIVE THRU CONC ISLANDS
17	LOCATION OF VAT 21 CUSTOMER DRIVE UP UNIT. GC TO PROVIDE CONDUIT STUB UP AS REQD BY DIEBOLD. COORD W/ DIEBOLD DWGS

GENERAL DIEBOLD NOTES:
GC 4 SUBCONTRACTORS ARE TO THOROUGHLY REVIEW DIEBOLD SUPPLIED DRAWINGS FOR ITEMS TO BE PURN OR F#1 BY GC OR ITS SUBCONTRACTORS.

GC IS TO COORDINATE W/ DIEBOLD FOR INSTALLATION REQUIREMENTS FOR THE VAULT AND REQUIRED UTILITIES.
GC IS TO NOTE DIEBOLD SEQUENCING REQUIREMENTS.

GC IS ALSO TO PROVIDE DIEBOLD W/ SHOP DWGS OF CURTAINWALL AND PRECAST SYSTEM FOR THEIR COORDINATION AND REVIEW



A3 1/8" = 1'-0" **THIRD FLOOR PLAN**

- FLOOR PLAN TAGGED NOTES**
- | TAG # | DESCRIPTION |
|-------|---|
| 1 | PLUMBING RISER LOCATION. SEE DETAILS ON SHEET D1/A2.21. ROUTE PLUMBING FROM ABOVE 4 BELOW AS REQUIRED TO FIT INTO CONFIGURATION SHOWN. NOTE THAT ALL RISER LOCATIONS HAVE NOT BEEN IDENTIFIED ON ARCHITECTURAL PLANS. GC TO COORDINATE W/ MEP DWGS. GC TO COORDINATE W/ ARCHITECT PRIOR TO INSTALLATION OF RISERS NOT SHOWN AND IF THERE ARE ANY CONFLICTS WITH ONES SHOWN. |
| 2 | FIRE RISER STANDPIPE. PROVIDE RECESSED CABINET FOR VALVES AND FLOOR CONTROLS. |
| 3 | LOCATION OF TEST HEADER. COORDINATE W/ SPRINKLER SHOP DRAWINGS. |
| 4 | LOCATION OF RECESSED KNOX BOX. PRECAST MFR. TO PROVIDE CUTOUT AS REQUIRED. |
| 5 | LOCATION OF STAIRWELL FAN COIL UNIT. COORDINATE FINAL OPENING SIZE W/ MFR. REQUIREMENTS. |
| 6 | 4" DIA. PAINTED STEEL PIPE BOLLARD FILLED W/ CONCRETE - SEE CIVIL DRAWINGS FOR DETAIL 4 'DIEBOLD' REQUIREMENTS. |
| 7 | 'WOODFOLD' COUNTERTOP ROLL-UP DOOR. |
| 8 | P. LAM. (PL) COUNTERTOP AT CATERING 408 AND SERVING 414 SEE SECTION D4/A1.31 |
| 9 | FIRE DEPARTMENT CONNECTION - SEE ELEVATION FOR LOCATION |
| 10 | TRANSFORMER PAD |
| 11 | WHEEL STOP - SEE CIVIL DRAWINGS FOR DETAIL. |
| 12 | 'LAPEYRE' ALTERNATING TREAD ROOF ACCESS STAIR 16'-0" HEIGHT W/ 60 DEGREE AND FLUSH HANDRAIL |
| 13 | SEAL WINDOW WITH 1/4" GYP. BD. ON 1 5/8" METAL STUDS @ 16" O.C. |

NOT USED

NOT USED

Consultant Logo:



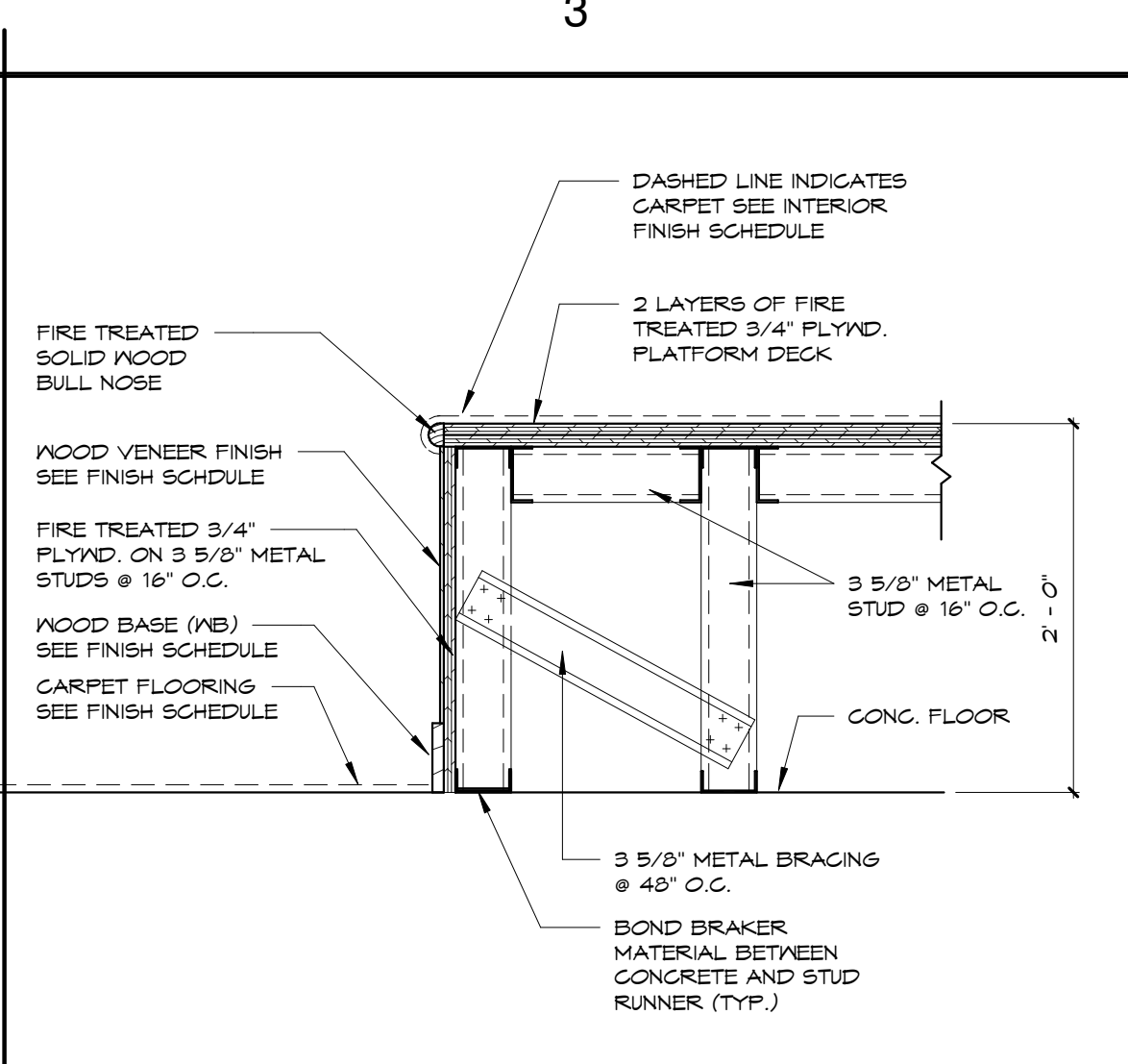
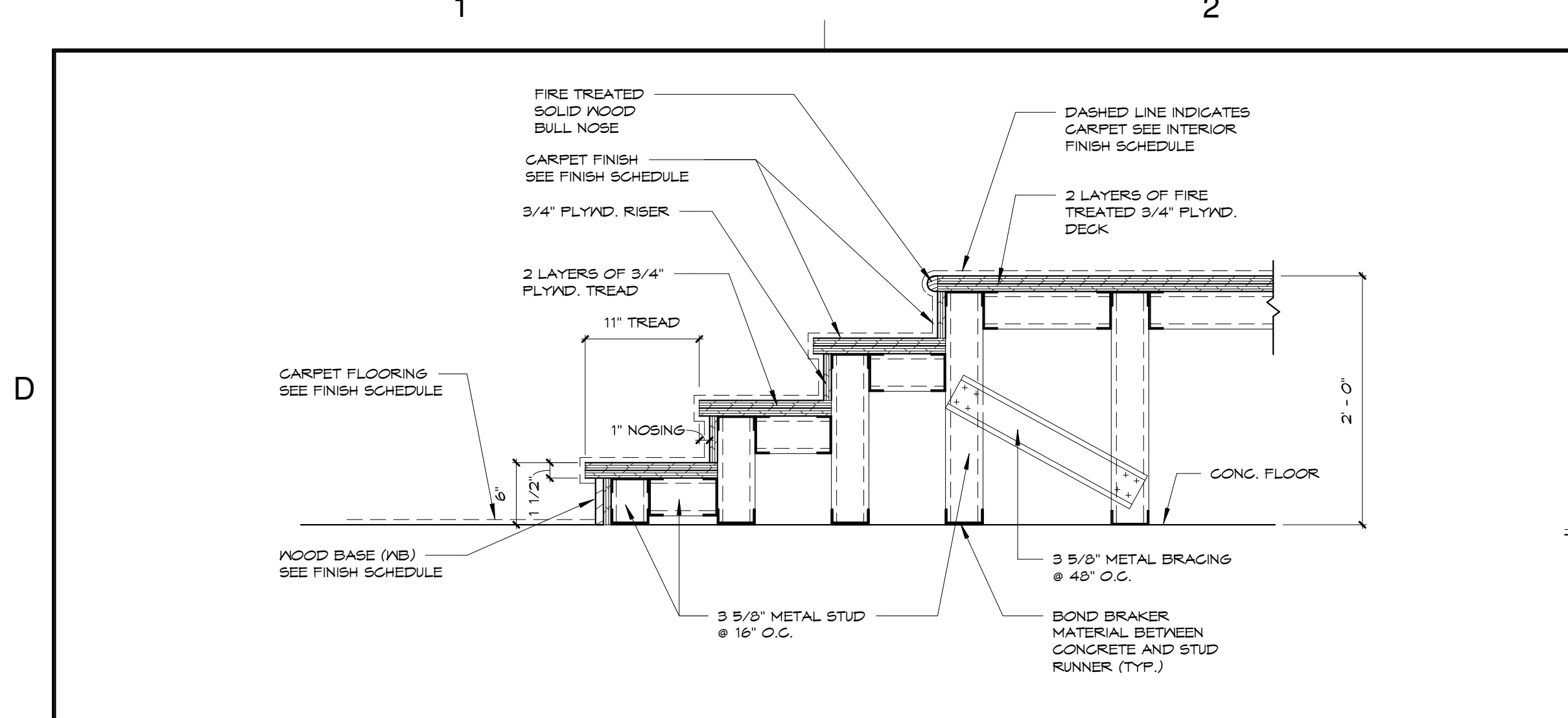
Project Name:

NO.	DATE	DESCRIPTION	BY

CONSTRUCTION DOCUMENTS
Principal in Charge: RCP
Project Architect: KAJ
Drawn By: MSM, RN, SN

Sheet Title:
THIRD FLOOR PLAN

Sheet Number: **A2.31**
Project No: 06045
Date: 06/07/07

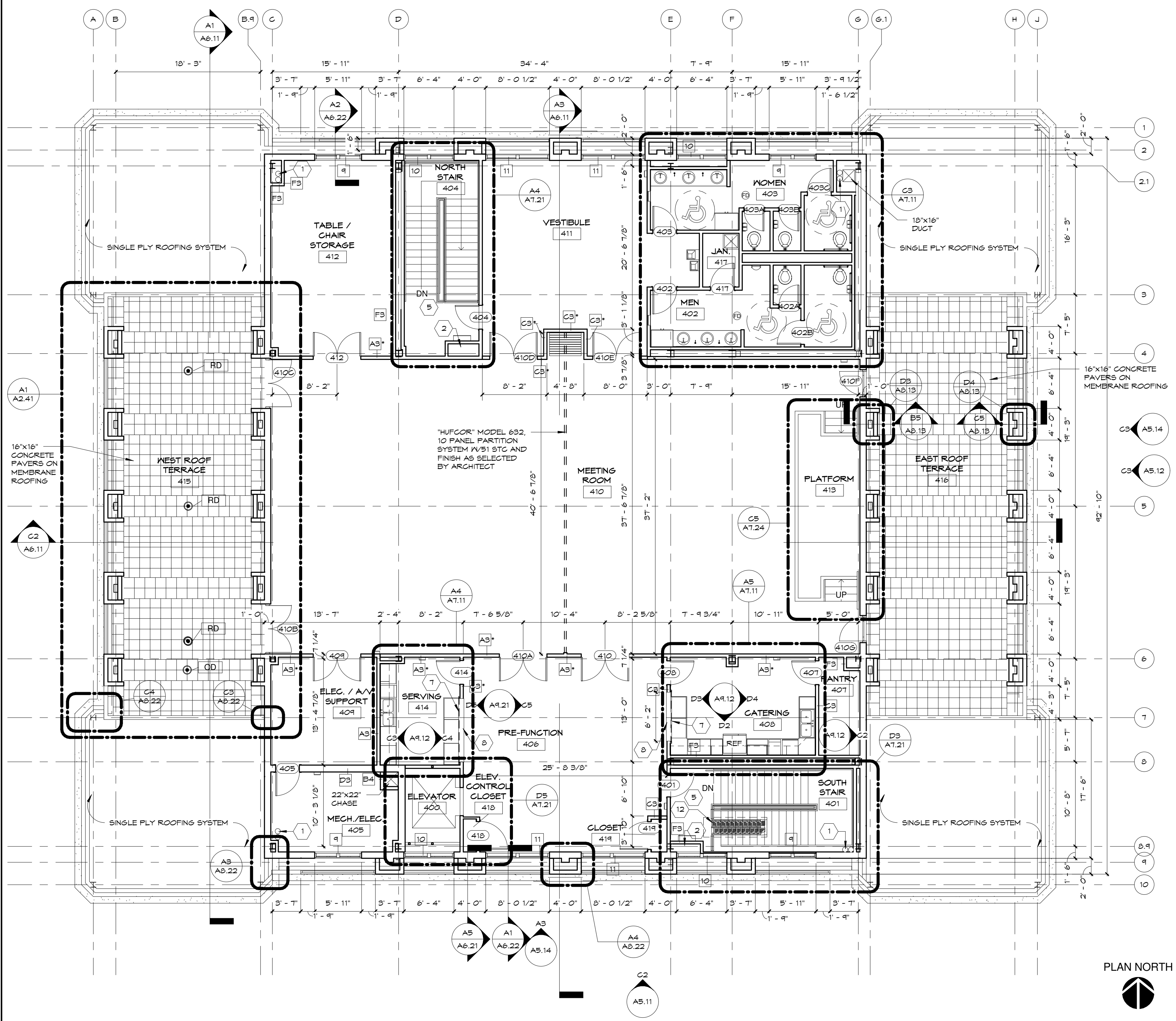
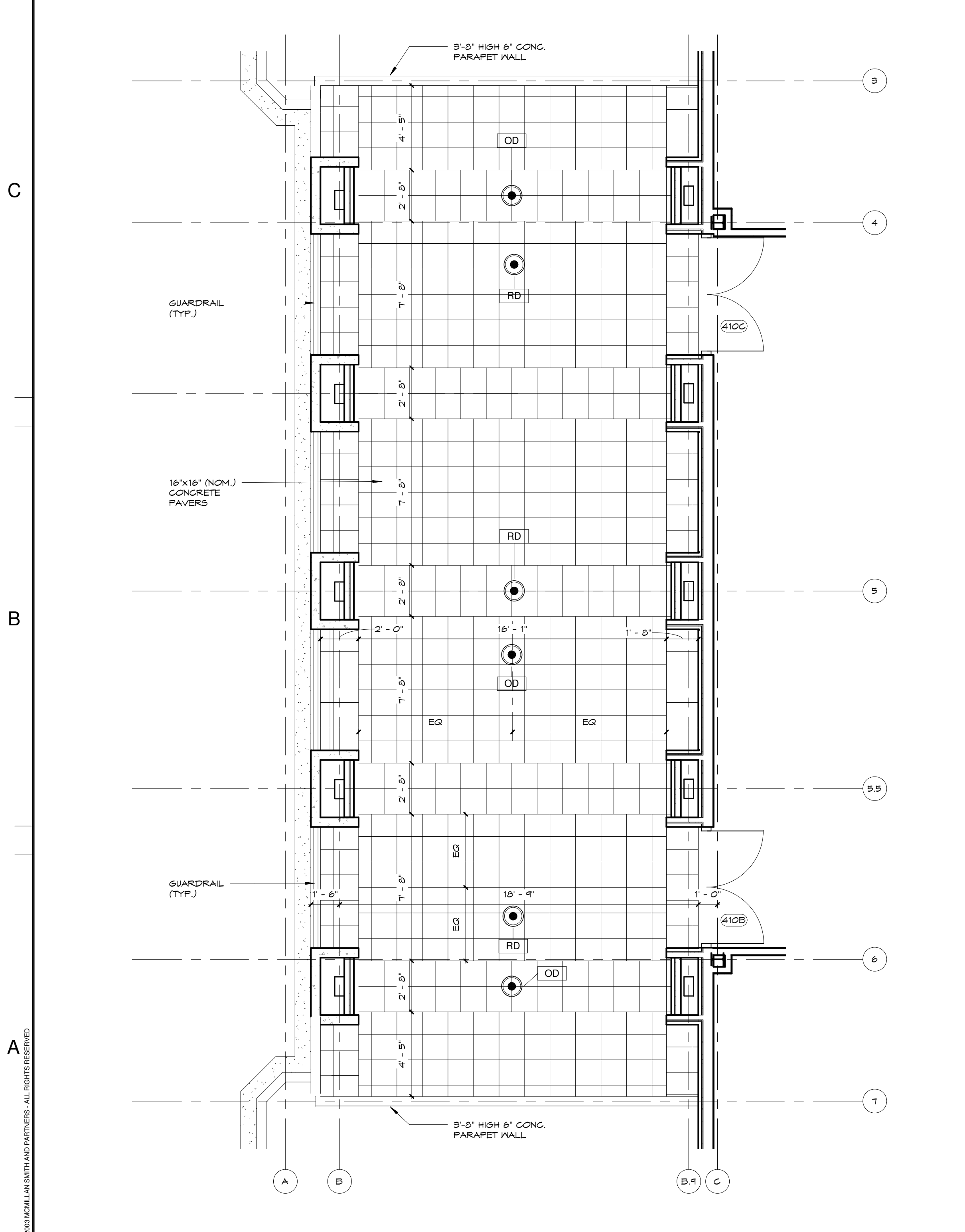


NOT USED

- FLOOR PLAN TAGGED NOTES
- | TAG # | DESCRIPTION |
|-------|---|
| 1 | PLUMBING RISER LOCATION. SEE DETAILS ON SHEET D1/A2.21. ROUTE PLUMBING FROM ABOVE & BELOW AS REQUIRED TO FIT INTO CONFIGURATION SHOWN. NOTE THAT ALL RISER LOCATIONS HAVE NOT BEEN IDENTIFIED ON ARCHITECTURAL PLANS. G.C. TO COORDINATE W/ MEP DWGS. G.C. TO COORDINATE W/ ARCHITECT PRIOR TO INSTALLATION OF RISERS NOT SHOWN AND IF THERE ARE ANY CONFLICTS WITH ONES SHOWN. |
| 2 | FIRE RISER STANDPIPE. PROVIDE RECESSED CABINET FOR VALVES AND FLOOR CONTROLS |
| 3 | LOCATION OF TEST HEADER. COORDINATE W/ SPRINKLER SHOP DRAWINGS |
| 4 | LOCATION OF RECESSED KNOX BOX. PRECAST MFR. TO PROVIDE CUTOUT AS REQUIRED |
| 5 | LOCATION OF STAIRWELL FAN COIL UNIT. COORDINATE FINAL OPENING SIZE W/ MFR. REQUIREMENTS |
| 6 | 4" DIA. PAINTED STEEL PIPE BOLLARD FILLED W/ CONCRETE - SEE CIVIL DRAWINGS FOR DETAIL. # "DEBOLD" REQUIREMENTS |
| 7 | "WOODFOLD" COUNTERTOP ROLL-UP DOOR |
| 8 | 1/2" LAM. (PL) COUNTERTOP AT CATERING 408 AND SERVING 414 SEE SECTION D4/A9.31 |
| 9 | FIRE DEPARTMENT CONNECTION - SEE ELEVATION FOR LOCATION |
| 10 | TRANSFORMER PAD |
| 11 | WHEEL STOP - SEE CIVIL DRAWINGS FOR DETAIL |
| 12 | "LAPEYRE" ALTERNATING TREAD ROOF ACCESS STAIR 16'-0" HEIGHT W/ 65 DEGREE AND FLUSH HANDRAIL |
| 13 | SEAL WINDOW WITH 1/4" GYP. BD. ON 1 5/8" METAL STUDS @ 16" O.C. |

D1 C5/A7.24 **PLATFORM STAIR DETAIL @ 4TH. FLOOR**
1" = 1'-0"

D3 C5/A7.24 **PLATFORM DETAIL @ 4TH. FLOOR**
1" = 1'-0"



A1 A3/A2.41 **WEST ROOF TERRACE PLAN @ 4th. FLOOR**
1/4" = 1'-0"

A3 1/8" = 1'-0" **FOURTH FLOOR PLAN**

McMillan Smith & Partners
Architects, PLLC



Post Office Box 5331
Spartanburg SC 29304
864.585.5678 Fax 864.542.9451
www.mcmillansmith.com

Project Name:
REVISIONS:
NO. DATE DESCRIPTION BY

CONSTRUCTION DOCUMENTS
Principal in Charge: RCP
Project Architect: KAJ
Drawn By: MSM, RN, SN

Sheet Title:
FOURTH FLOOR PLAN

Sheet Number:
A2.41

Project No:
06045

Date:
06/07/07



COPYRIGHT 2003 MCMILLAN SMITH AND PARTNERS. ALL RIGHTS RESERVED.