

DOWNTOWN OFFICE BUILDING

108 S. DAKOTA AVE | SIOUX FALLS, SD



OWNER OCCUPANT/INVESTMENT

Presenting a distinctive commercial real estate opportunity in the heart of the central business district in downtown Sioux Falls. This iconic, round-shaped building, with a total area of 6,800 square feet, is now available for sale. Built in 1966 and tastefully updated in 1977, 2012, 2014, 2020, and 2024, this property boasts a main floor of 2,163 square feet, featuring a captivating lobby with a gas fireplace, reception area, two open office spaces, restrooms, a large executive office, and an expansive executive conference room. The lower level, accessible from the main floor, offers 4,637 square feet of versatile space, including a quality finished break area, tech room, open office area, glass overhead doors for flexible meeting room configurations and a lounge area. The building also has a large 17,863 SF indoor heated parking garage. Conveniently facilitating access, an enclosed stairwell positioned on the northeast corner of the property ensures seamless, and secure connectivity between the surface parking stalls and the lower-level garage area. There is also direct access from the lower level office to the indoor parking garage.

QUICK FACTS

- **Address:**
108 S Dakota, Sioux Falls, SD 57104
- **Pricing:**
\$2,175,000
- **Price / SF:**
\$319.85
- **Building Size:**
Total: 6,800 SF +/-
Main Level: 2,163 SF +/-
Lower Level: 4,637 SF +/-
- **Real Estate Taxes:**
\$20,225.40 (2024 Taxes payable in 2025)
- **Year Built:**
1966 (Renovations in 1977, 2012, 2014, 2020, & 2024)
- **Site Size:**
0.52 Acres +/- (22,500 SF +/-)
- **Zoning:**
DTPUD
- **Parking:**
Garage encompasses 17,863 SF
30 indoor heated parking stalls; 45 surface parking stalls
*Excellent opportunity to generate additional income from parking rentals to nearby businesses
*Some parking stalls are committed for a period of time - contact Broker for details
- **Other:**
New concrete surface parking structure installed in 2019, with transferrable 25 year leak warranty

KRISTEN ZUEGER, SIOR

Broker Associate

605.376.1903 | 150 E 4th Place | Suite. 600 | Sioux Falls, SD 57104

Information herein is deemed reliable, but not guaranteed.



SUMMARY

108 S. DAKOTA AVE | SIOUX FALLS, SD

UPPER LEVEL



LOWER LEVEL



Information herein is deemed reliable, but not guaranteed.

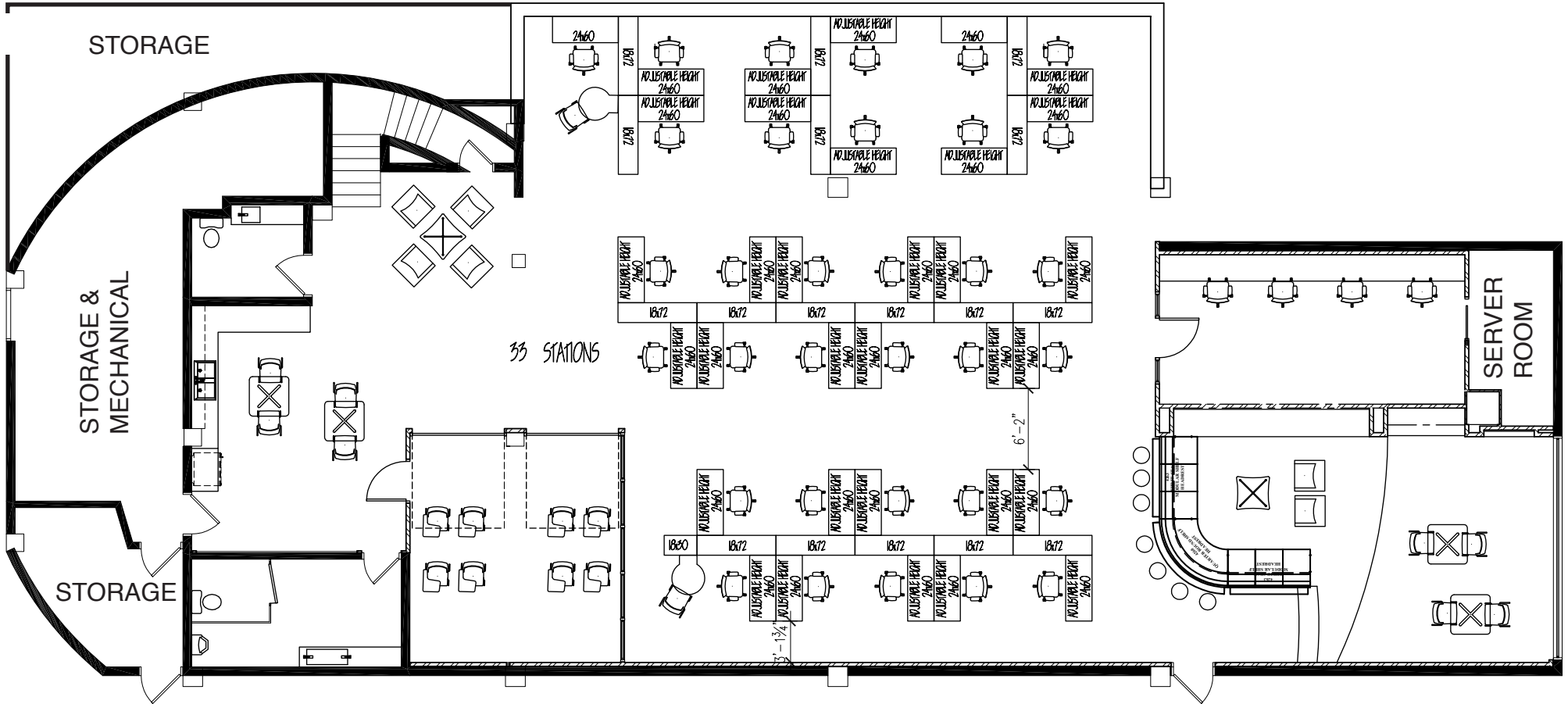


Information herein is deemed reliable, but not guaranteed.

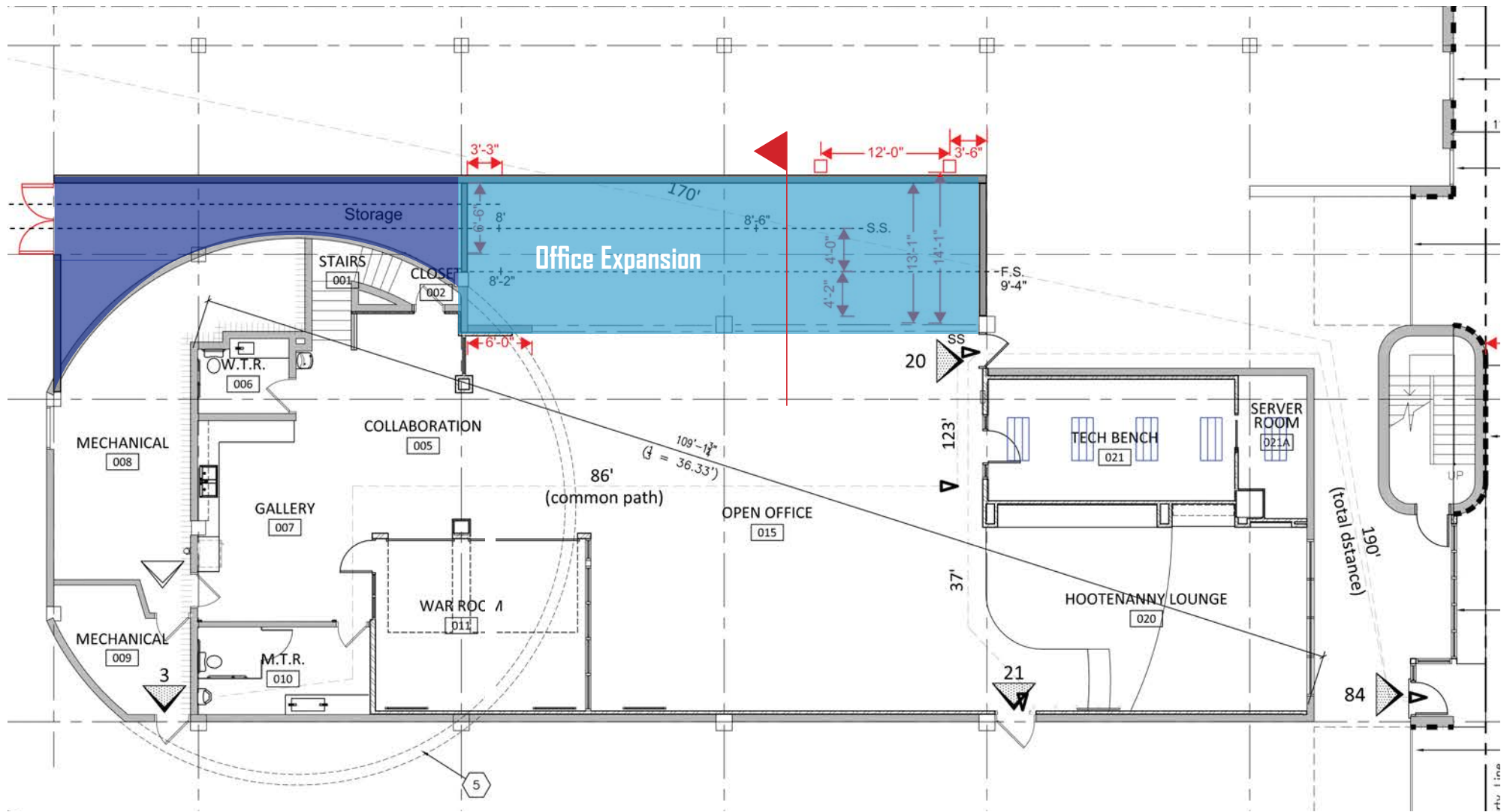


EXTERIOR

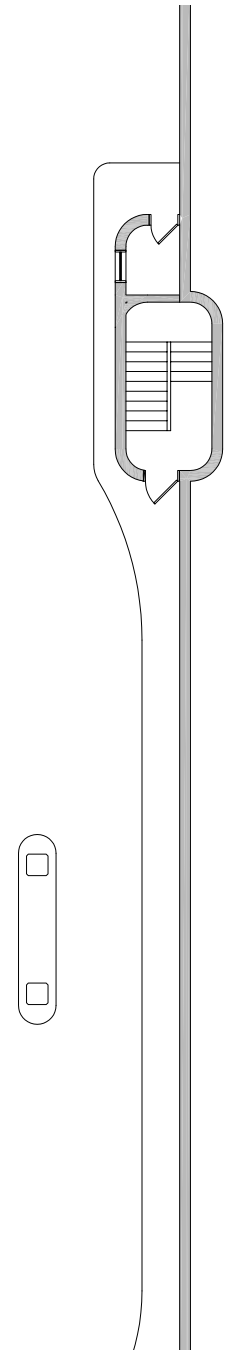
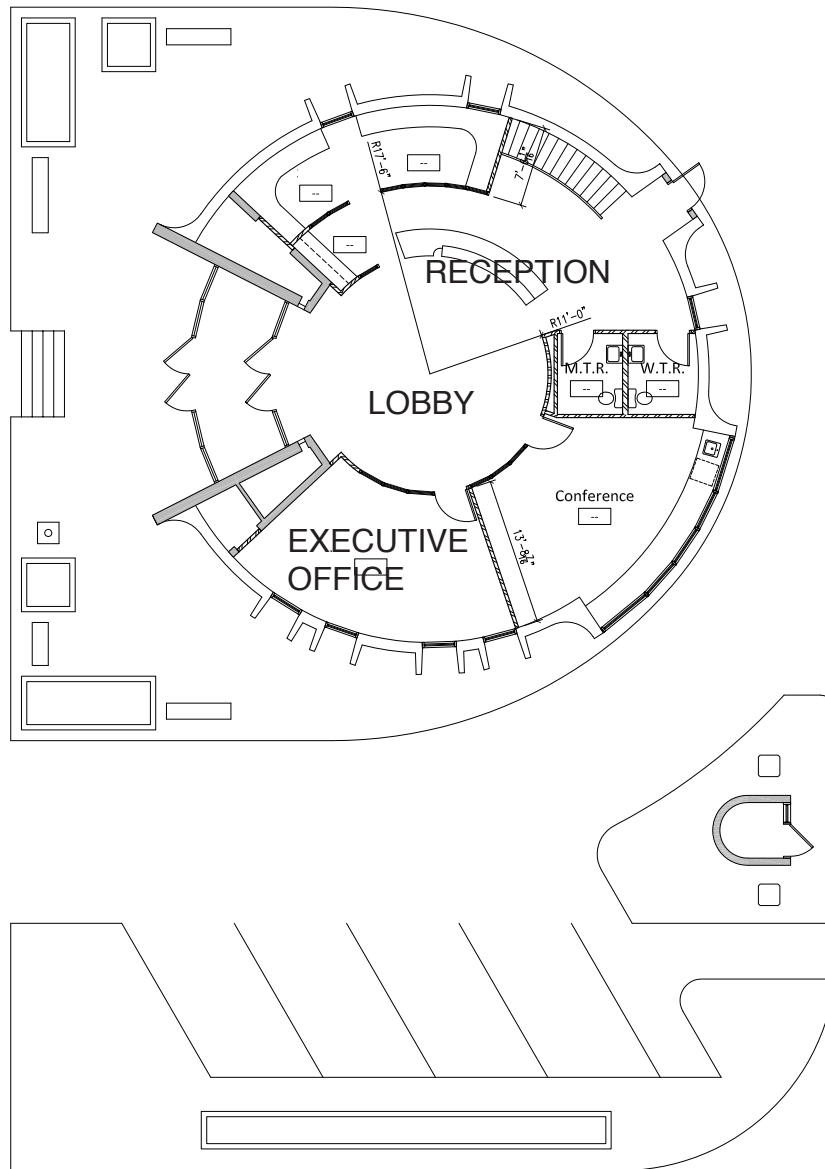
108 S. DAKOTA AVE | SIOUX FALLS, SD



Information herein is deemed reliable, but not guaranteed.



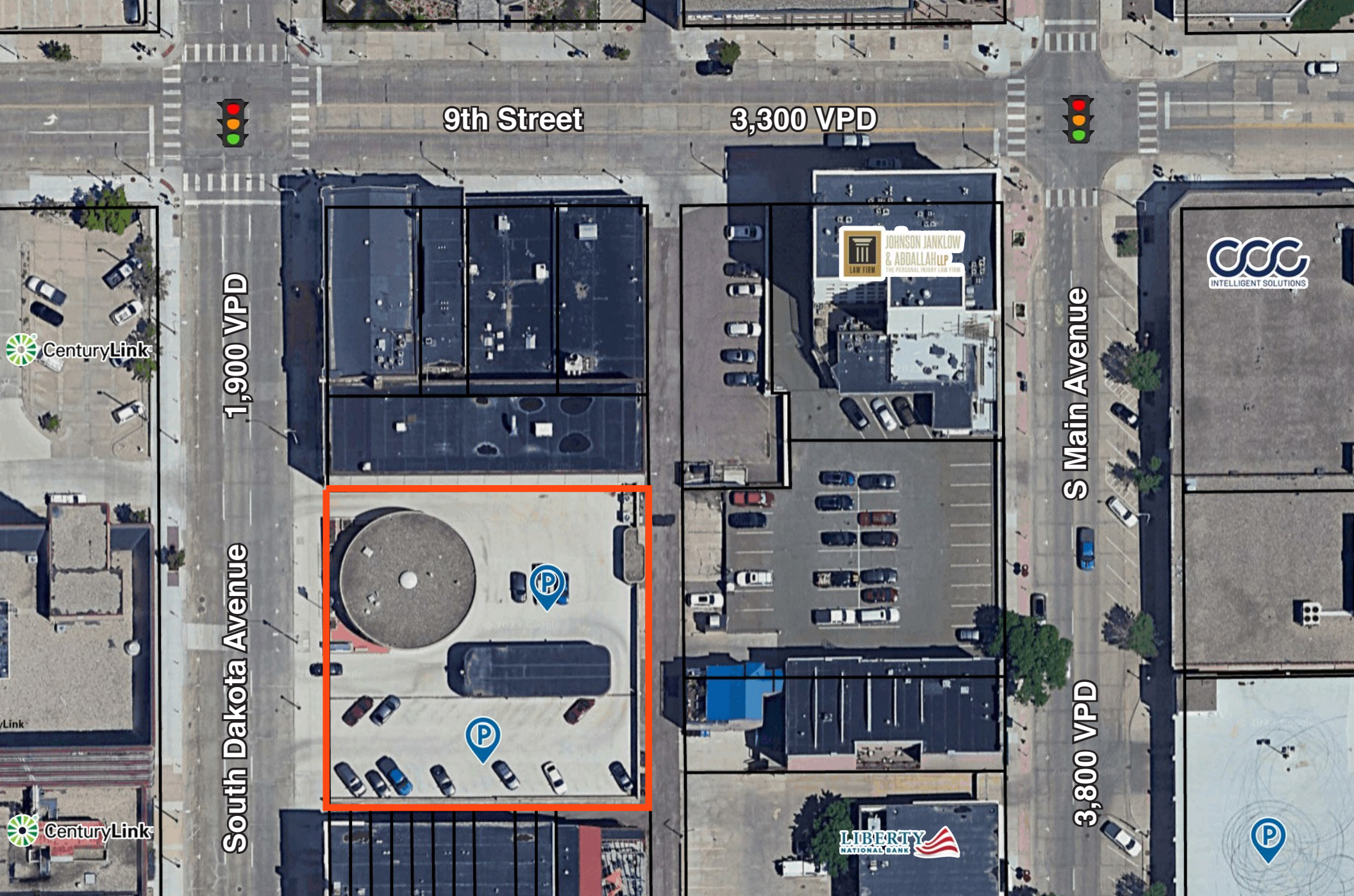
Information herein is deemed reliable, but not guaranteed.



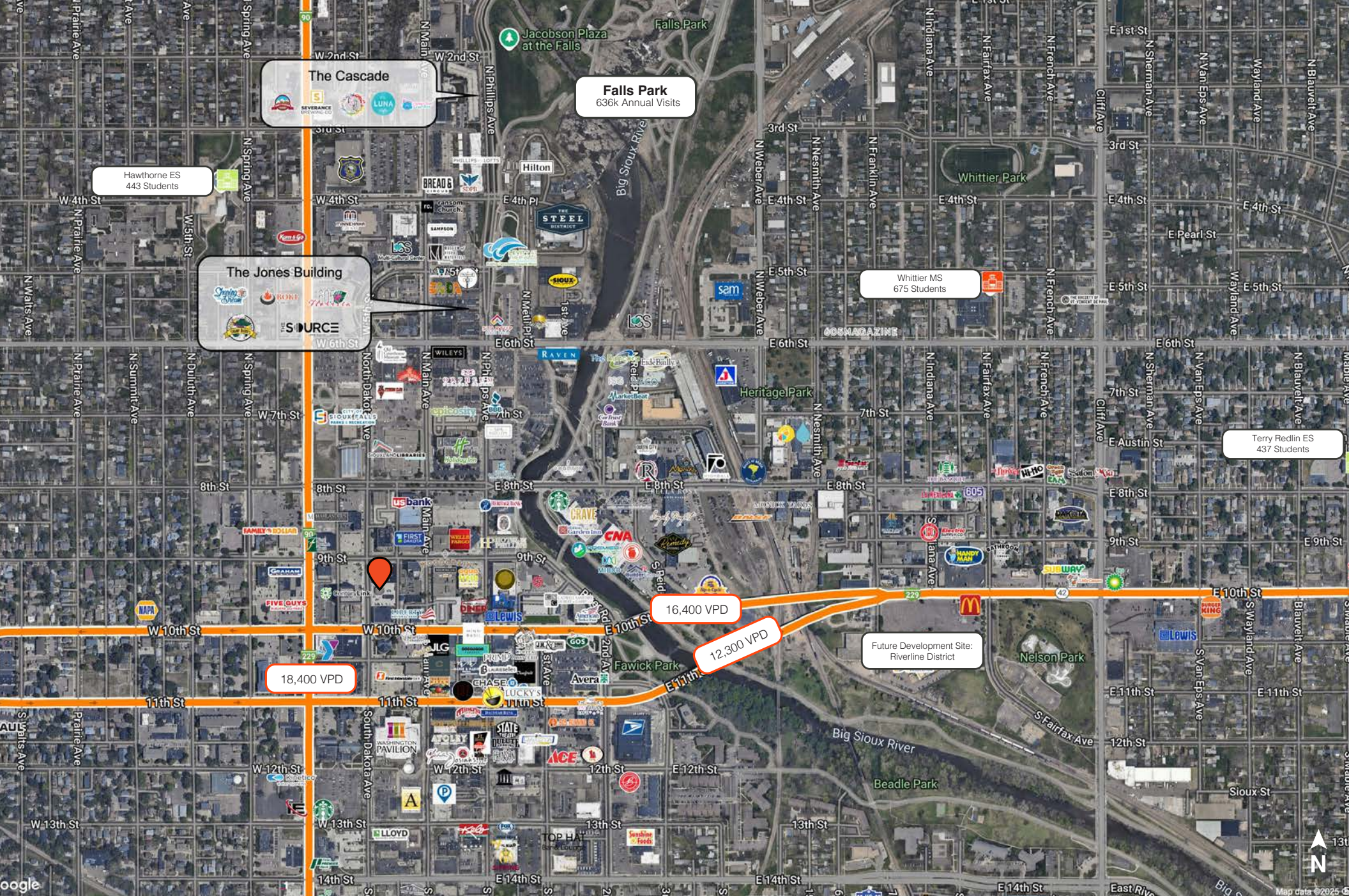
Information herein is deemed reliable, but not guaranteed.

MAIN LEVEL FLOOR PLAN

108 S. DAKOTA AVE | SIOUX FALLS, SD



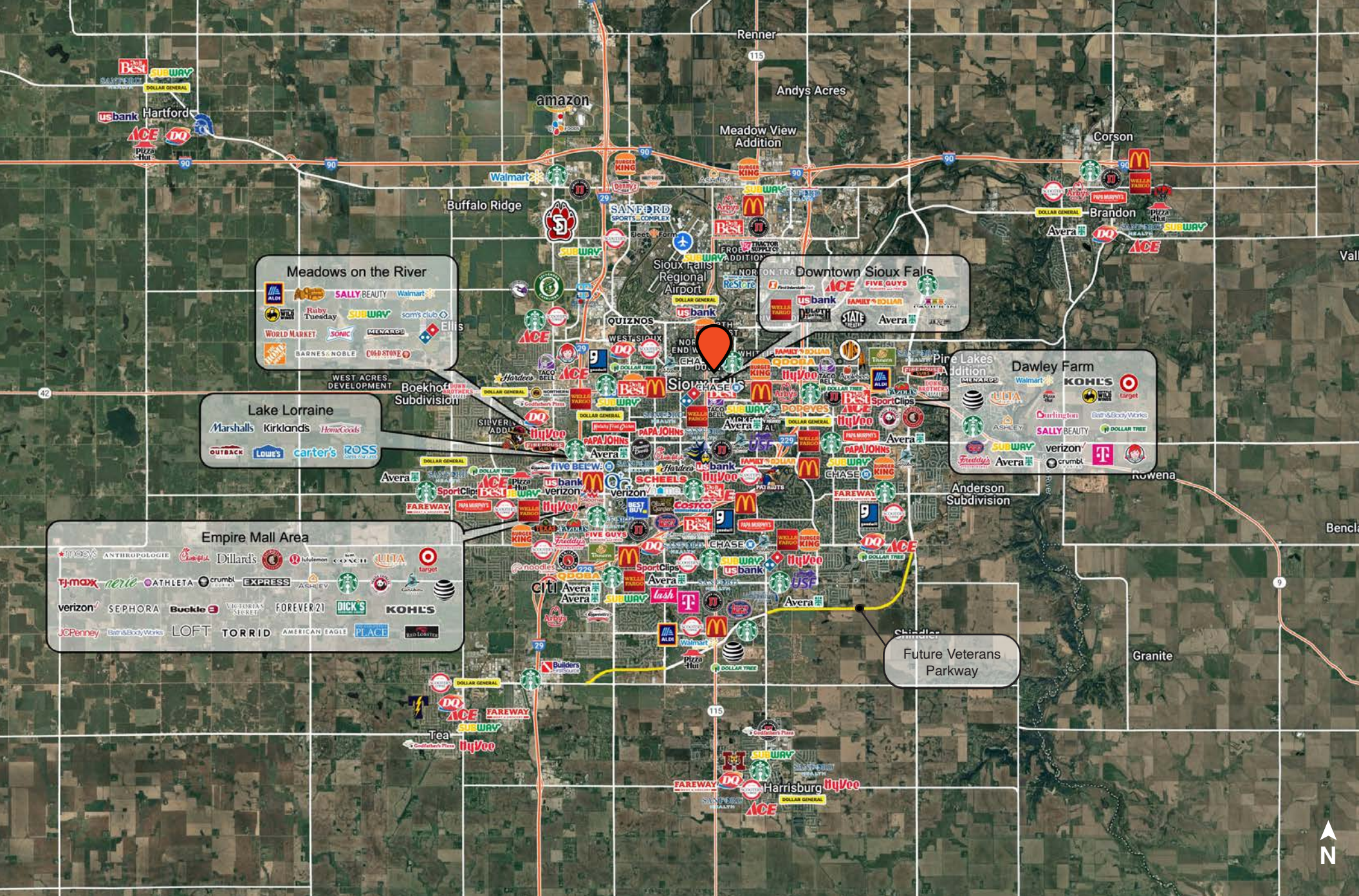
Information herein is deemed reliable, but not guaranteed.



Information herein is deemed reliable, but not guaranteed.



AREA MAP
108 S. DAKOTA AVE | SIOUX FALLS, SD



Information herein is deemed reliable, but not guaranteed.



CITY MAP

108 S. DAKOTA AVE | SIOUX FALLS, SD

	1 mile	3 miles	5 miles
Population Summary			
2010 Total Population	16,468	74,346	142,792
2020 Total Population	16,573	76,060	168,864
2020 Group Quarters	914	3,871	4,860
2024 Total Population	17,572	79,096	183,930
2024 Group Quarters	908	3,872	4,860
2029 Total Population	18,724	81,931	198,580
2023-2028 Annual Rate	1.28%	0.71%	1.54%
2024 Total Daytime Population	29,698	117,368	217,751
Workers	22,160	83,816	136,292
Residents	7,538	33,552	81,459
Household Summary			
2010 Households	7,189	30,632	57,517
2010 Average Household Size	2.13	2.25	2.38
2020 Total Households	7,652	32,092	69,719
2020 Average Household Size	2.05	2.25	2.35
2024 Households	8,185	33,633	75,743
2024 Average Household Size	2.04	2.24	2.36
2029 Households	8,774	35,055	81,819
2029 Average Household Size	2.03	2.23	2.37
2023-2028 Annual Rate	1.40%	0.83%	1.56%
2010 Families	3,162	16,466	34,539
2010 Average Family Size	3.07	2.96	3.01
2024 Families	3,246	16,728	42,779
2024 Average Family Size	3.10	3.10	3.12
2029 Families	3,419	17,177	45,716
2029 Average Family Size	3.11	3.10	3.14
2023-2028 Annual Rate	1.04%	0.53%	1.34%
2024 Housing Units	9,071	36,019	81,410
Owner Occupied Housing Units	30.6%	47.8%	52.8%
Renter Occupied Housing Units	59.7%	45.6%	40.2%
Vacant Housing Units	9.8%	6.6%	7.0%
Median Household Income			
2024	\$55,737	\$60,825	\$72,090
2029	\$62,444	\$68,619	\$84,781
Median Age			
2010	33.7	33.9	34.5
2020	36.5	35.5	36.2
2024	37.4	35.9	36.4
2029	39.0	37.3	37.5
2024 Population by Sex			
Males	9,233	41,199	92,759
Females	8,339	37,897	91,171
2029 Population by Sex			
Males	9,700	42,279	99,264
Females	9,025	39,652	99,316
Data for all businesses in area			
Total Businesses:	1,810	5,113	8,838
Total Employees:	26,249	77,462	127,493

Information herein is deemed reliable, but not guaranteed.



KRISTEN ZUEGER, SIOR
Broker Associate

605.376.1903 | kristen.zueger@lloydcompanies.com

150 E. 4th Place | Suite 600 | Sioux Falls, SD 57104
605.323.2820 | LloydCompanies.com

Property details contained herein are intended for general informational purposes only. Lloyd Real Estate, LLC has not independently verified the provided information and makes no representation or warranty of any kind regarding its accuracy or completeness. Traffic, visit, and sale data within this document, sourced from a third-party provider, is based on tracking data from mobile/cellular devices. Use this information at your own discretion, and always consult with qualified professionals or experts in the relevant field for specific guidance. All interested parties are advised to take appropriate measures to verify all information set forth herein. Nothing contained herein shall be deemed to constitute legal, financial, or professional advice.

Information herein is deemed reliable, but not guaranteed.



CONTACT INFO
108 S. DAKOTA AVE | SIOUX FALLS, SD