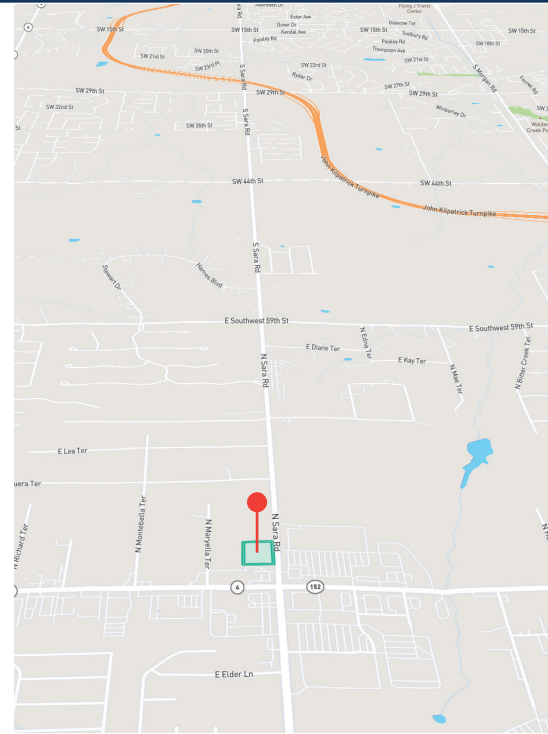
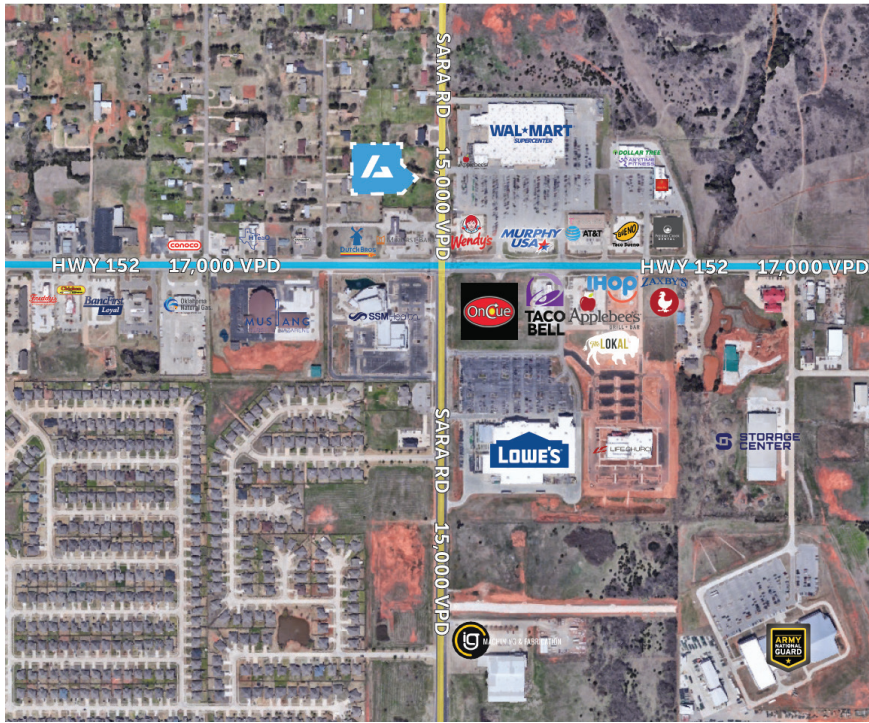




SARA RD.

Mustang, OK



### Summary

- Lease Rate: Call for Pricing
- Building Size: 8,000 SF each
- Available For Lease: 8,000 SF
- Completion Date: Q3 2025
- Co-Tenants: TBD
- Parking Count: TBD

### Demographics

#### 2024 Population

5,548 1 Mile	72,795 3 Mile	163,385 5 Mile
-----------------	------------------	-------------------

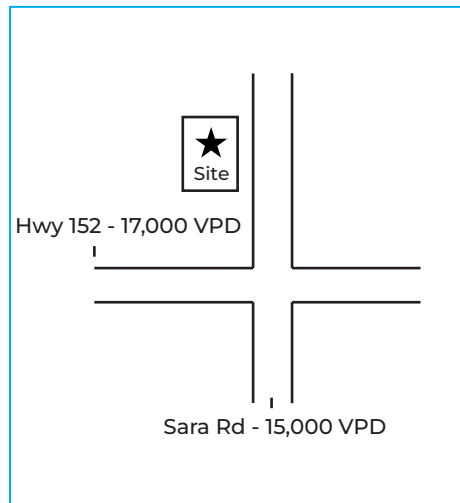
#### 2024 Average Household Income

\$98,809 1 Mile	\$97,747 3 Mile	\$100,746 5 Mile
--------------------	--------------------	---------------------

#### Estimated Annual Population Growth ('24-'29)

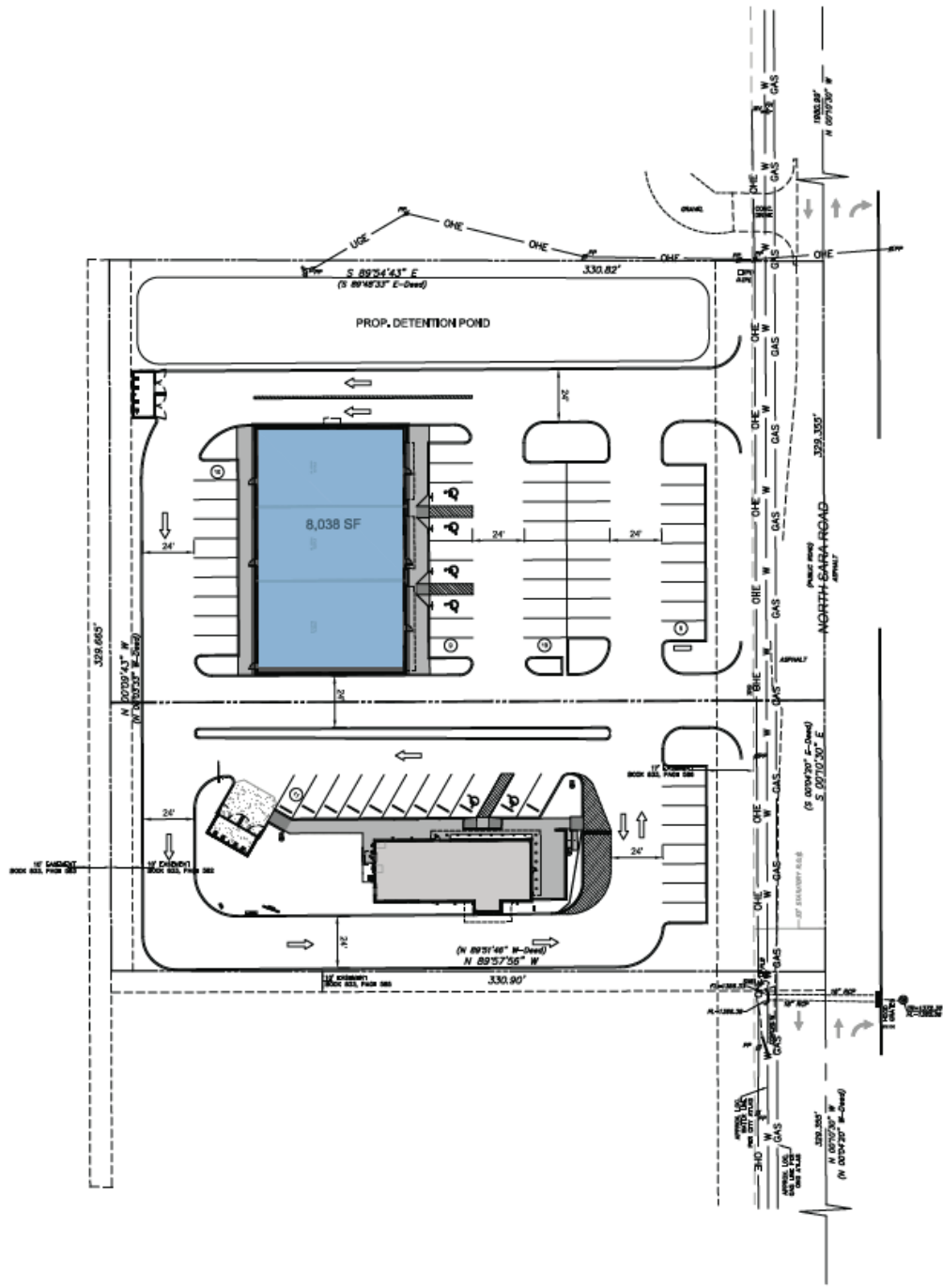
19.809% 1 Mile	18.85% 3 Mile	19.34% 5 Mile
-------------------	------------------	------------------

### Traffic Counts



### Property Overview

- Located in high growth market of Mustang
- Conveniently located across from Wal-Mart power center
- QSR pad on south of development



---

## Jacob Ryan

Director of Leasing

E: [jacobryan@ashtongray.com](mailto:jacobryan@ashtongray.com)

P: +1 (405) 830-4957

O: +1 (405) 300-4003



ASHTONGRAY

---

## Michael Feighny

Leasing Associate National Accounts

E: [michaelfeighny@ashtongray.com](mailto:michaelfeighny@ashtongray.com)

P: +1 (405) 361-9778

O: +1 (405) 300-4003

