



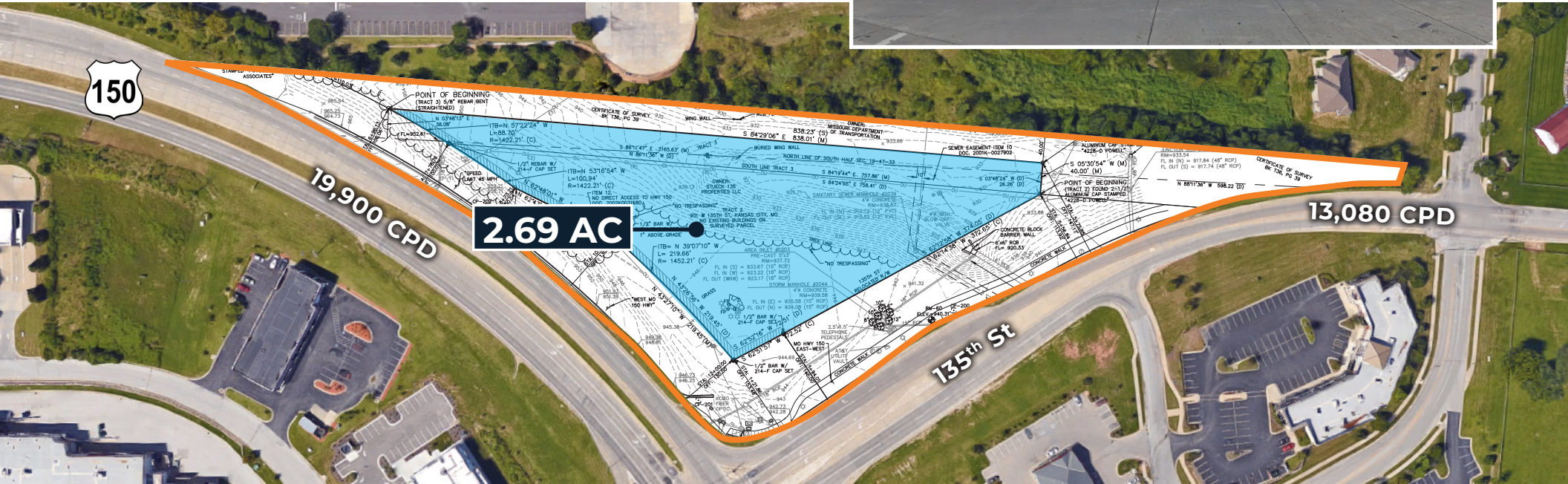
**2.69 AC**  
AVAILABLE

# HWY 150 & W 135<sup>TH</sup> ST

## LAND FOR SALE

### PROPERTY HIGHLIGHTS

- Located on the hard corner of 135<sup>th</sup> St with full access
- Zoned B3-2 (retail and service providers)
- High visibility with over 19,900 CPD on Hwy 150
- Located between Walmart, Lowe's, and Target





Cameron's Court  
Mixed-Use Development  
Residential, Office, Retail  
- Proposed -

**SITE**

State Line Station  
Target  
WORLD MARKET  
DOLLAR TREE

State Line Shops  
Michaels  
BIG LOTS  
LUKAS

State Line Rd  
21,280 CPD

150

22,972 CPD

Blue Ridge Blvd

135th St

135th St

QT

Volleyball Beach

Holmes Rd

Leawood, KS

Kansas City, MO