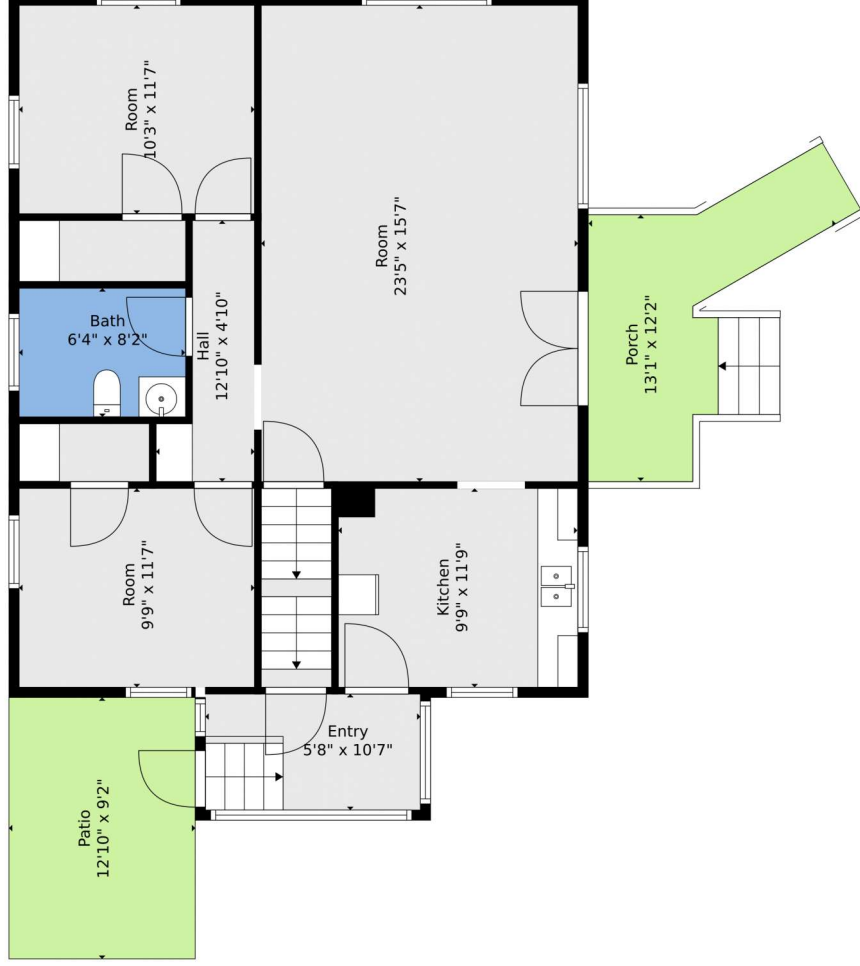


743 East Bridge Street, Brighton, CO 80601 — Main



TOTAL: 952 sq. ft.
BELOW GROUND: 0 sq. ft., FLOOR 2: 952 sq. ft., FLOOR 3: 0 sq. ft.
EXCLUDED AREAS: STORAGE: 558 sq. ft., BASEMENT: 265 sq. ft., PATIO: 118 sq. ft.,
PORCH: 108 sq. ft., UNDEFINED: 34 sq. ft., LOW CEILING: 244 sq. ft.,
ATTIC: 116 sq. ft.

Floor Plan Created By: V1photos.com. Measurements Deemed Highly Reliable But Not Guaranteed.



Disclaimer: Sizes and Dimensions are Approximate, Actual May Vary.



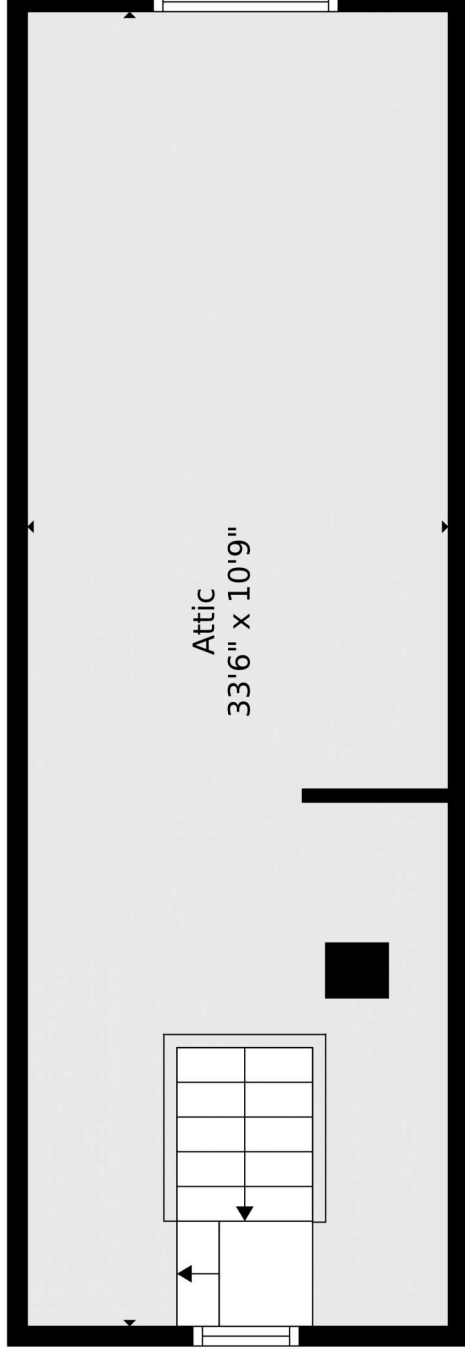
Kristen Miller
303-503-9823
kristen@aperfectlocationrealty.com
<http://www.aperfectlocationrealty.com/>



Scan code
for more
property
details



743 East Bridge Street, Brighton, CO 80601 – 2nd Level



TOTAL: 952 sq. ft.
BELOW GROUND: 0 sq. ft., FLOOR 2: 952 sq. ft., FLOOR 3: 0 sq. ft.
EXCLUDED AREAS: STORAGE: 558 sq. ft., BASEMENT: 265 sq. ft., PATIO: 118 sq. ft.,
PORCH: 108 sq. ft., UNDEFINED: 34 sq. ft., LOW CEILING: 244 sq. ft.,
ATTIC: 116 sq. ft.

Floor Plan Created By Ylphotos.com. Measurements Deamed Highly Reliable But Not Guaranteed.

Disclaimer: Sizes and Dimensions are Approximate, Actual May Vary.



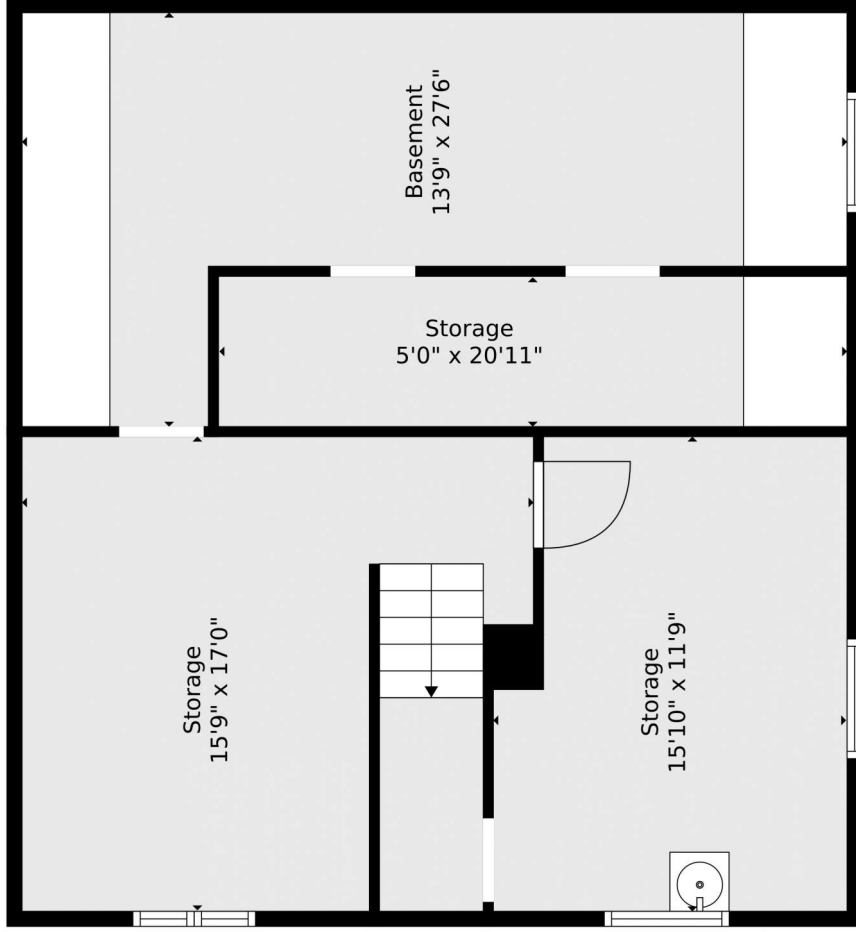
Kristen Miller
303-503-9823
kristen@aperfectlocationrealty.com
<http://www.aperfectlocationrealty.com/>



Scan code
for more
property
details



743 East Bridge Street, Brighton, CO 80601 — Lower Level



TOTAL: 952 sq. ft.
BELOW GROUND: 0 sq. ft., FLOOR 2: 952 sq. ft., FLOOR 3: 0 sq. ft.
EXCLUDED AREAS: STORAGE: 558 sq. ft., BASEMENT: 265 sq. ft., PATIO: 118 sq. ft.,
PORCH: 108 sq. ft., UNDEFINED: 34 sq. ft., LOW CEILING: 244 sq. ft.,
ATTIC: 116 sq. ft.

Floor Plan Created By Y1photos.com. Measurements Deamed Highly Reliable But Not Guaranteed.



Kristen Miller
303-503-9823
kristen@aperfectlocationrealty.com
<http://www.aperfectlocationrealty.com/>

Disclaimer: Sizes and Dimensions are Approximate, Actual May Vary.



Scan code
for more
property
details

