

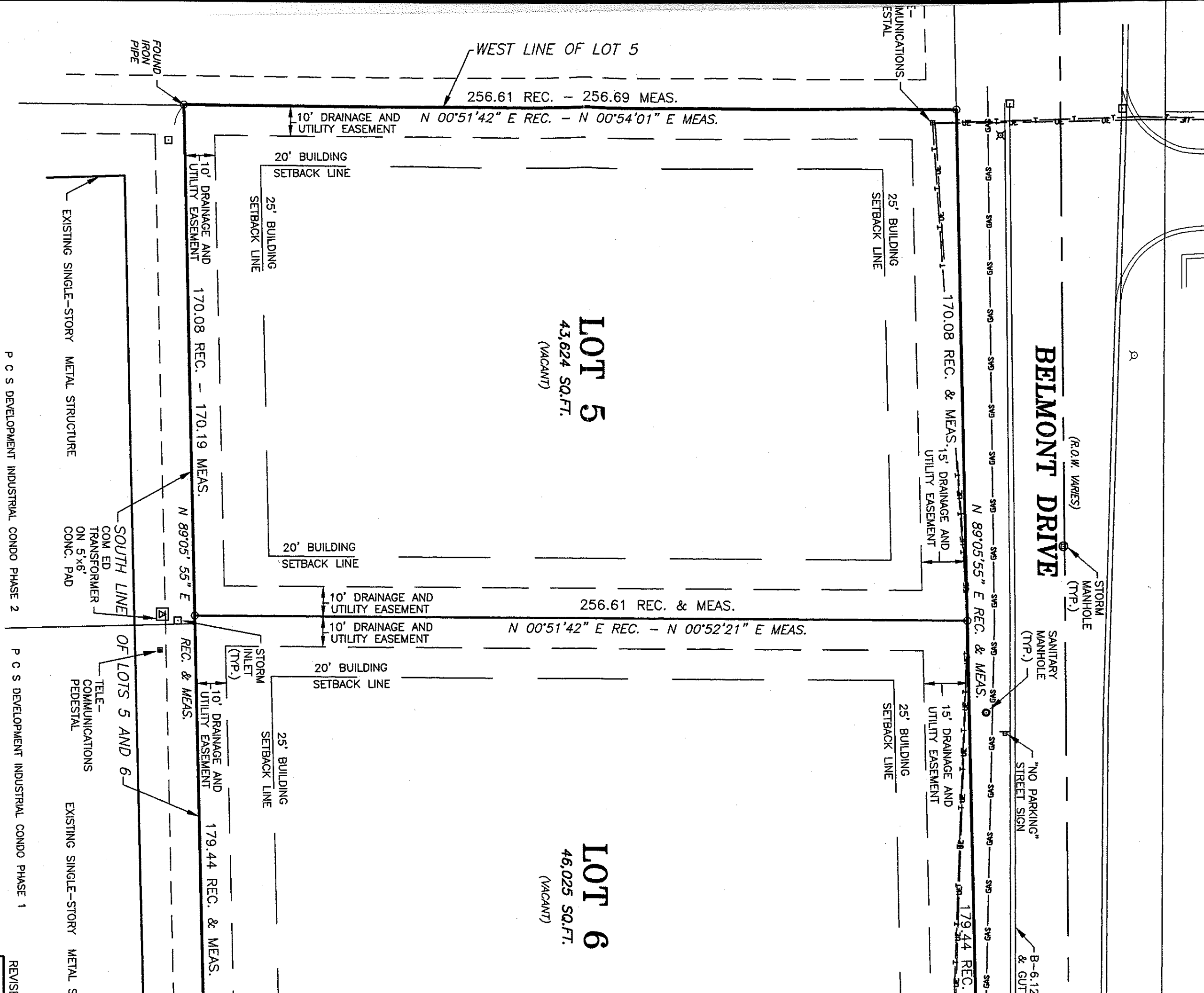
PLAT OF SURVEY / A.L.

LOTS 5 AND 6 IN ROMEVILLE COMMERCIAL PARK UNIT TWO, A SUBDIVISION OF PART OF SECTION 10 TOWNSHIP 37 NORTH, RANGE 10 EAST OF THE THIRD PRINCIPAL MERIDIAN, ACCORDING TO THE PLAT THEREOF RECORDED SEPTEMBER 18, 1997 AS DOCUMENT NO. R97-81160, IN WILL COUNTY, ILLINOIS.

LOT 5 P.I.N. 2-34-315-004 LOT 6 P.I.N. 2-34-315-005

COMMERCIAL PARK UNIT ONE (DOCUMENT NO. R97-33535)

LOT 3



LOT 5
43,624 SQ.FT.
(VACANT)

LOT 6
46,025 SQ.FT.
(VACANT)

P C S DEVELOPMENT INDUSTRIAL CONDO PHASE 2

P C S DEVELOPMENT INDUSTRIAL CONDO PHASE 1

REVISION

120	PRC
-----	-----