

Prominent Office Available Now  
For Lease **Price Reduced!**

**CBRE**

# 3190 Clearview Way, Suite 200 San Mateo, California

## Property Highlights

- ±1,158 Rentable Square Feet
- 3 Private Offices
- 1 Conference Room
- Ample Parking
- Excellent Location
  - \* Right off Hwy 92, between Hwys 101 and 280
- Adjacent to old Visa campus
- Neighborhood shopping center within walking distance
- **Price Reduced:** \$3.03/SF Modified Gross
- 3 Months Free for a 2+ Year Lease
- \$2/SF Brokerage Procuring Fee



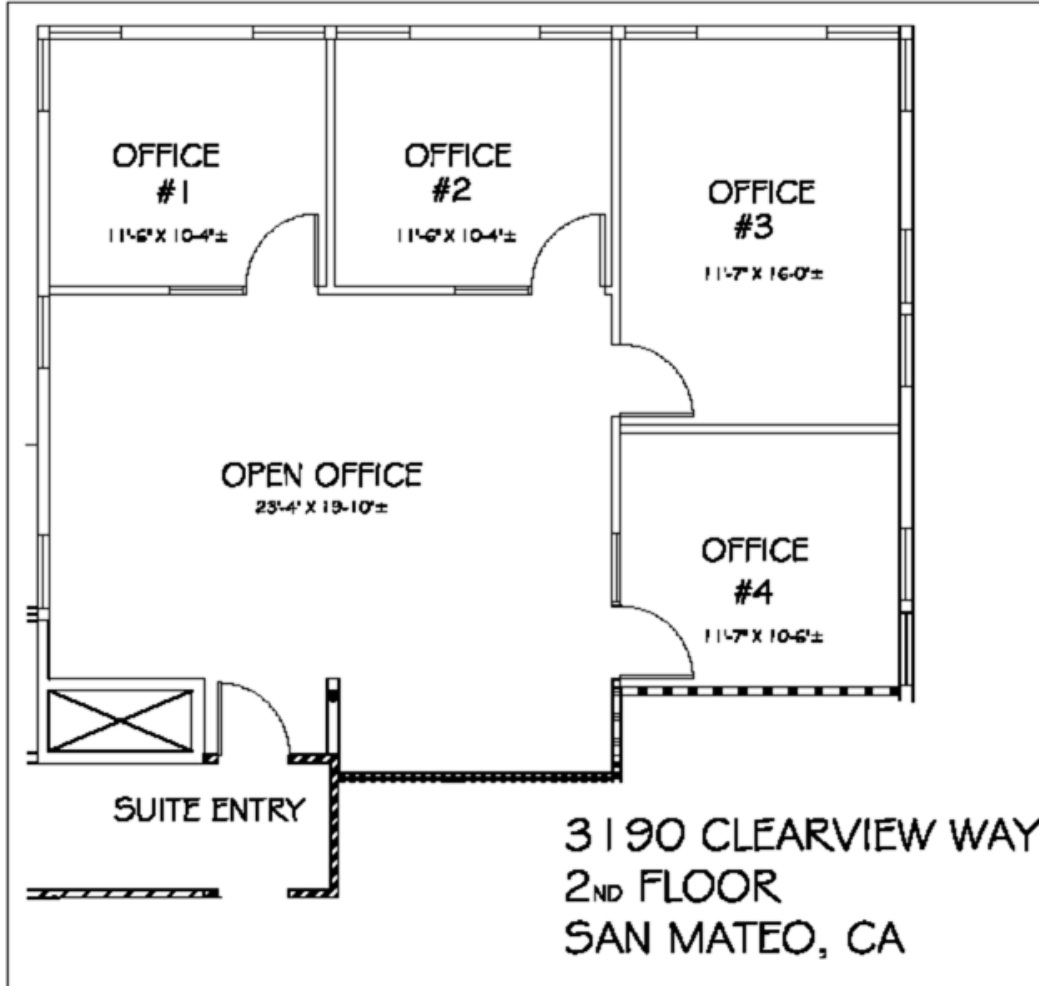
## Contact Us

**Robert McSweeney**  
Senior Vice President  
+1 650 577 2928  
bob.mcsweeney@cbre.com  
Lic. 00934240

**Matt Murray**  
Associate  
+1 650 577 2934  
matt.murray@cbre.com  
Lic. 02083830

© 2024 CBRE, Inc. All rights reserved. This information has been obtained from sources believed reliable but has not been verified for accuracy or completeness. CBRE, Inc. makes no guarantee, representation or warranty and accepts no responsibility or liability as to the accuracy, completeness, or reliability of the information contained herein. You should conduct a careful, independent investigation of the property and verify all information. Any reliance on this information is solely at your own risk. CBRE and the CBRE logo are service marks of CBRE, Inc. All other marks displayed on this document are the property of their respective owners, and the use of such marks does not imply any affiliation with or endorsement of CBRE. Photos herein are the property of their respective owners. Use of these images without the express written consent of the owner is prohibited.

# Floor Plan (not to scale)



## Contact Us

**Robert McSweeney**  
Senior Vice President  
+1 650 577 2928  
bob.mcsweeney@cbre.com  
Lic. 00934240

**Matt Murray**  
Associate  
+1 650 577 2934  
matt.murray@cbre.com  
Lic. 02083830

3190 Clearview Way, Suite 200  
San Mateo, California

For Lease



## Contact Us

**Robert McSweeney**  
Senior Vice President  
+1 650 577 2928  
bob.mcsweeney@cbre.com  
Lic. 00934240

**Matt Murray**  
Associate  
+1 650 577 2934  
matt.murray@cbre.com  
Lic. 02083830

[www.cbre.com/sanfranciscopeninsula](http://www.cbre.com/sanfranciscopeninsula)

**CBRE**