

FOR LEASE
INDUSTRIAL PROPERTY



20 GATE ST

CARVER, MA 02330

For More Information

KERRICK PIERCE

781.919.0800 X710

kpierce@ellisrealtyadvisors.com

DAVE ELLIS, SIOR

781.919.0800 X701

dave@ellisrealtyadvisors.com



20 GATE ST



PROPERTY DESCRIPTION

Situated minutes from Route 44 & close to Routes 495/3, this industrial property caters to wide variety of industrial needs. Complete with High bay warehouse space, floor drains, additional outdoor storage, and ample parking.

PROPERTY HIGHLIGHTS

- Close to Routes 44, 495 & 3
- High Bay Warehouse
- Ample Parking
- Additional Outdoor Storage Available
- Floor Drains & Bathroom in Unit
- Flexible Terms

OFFERING SUMMARY

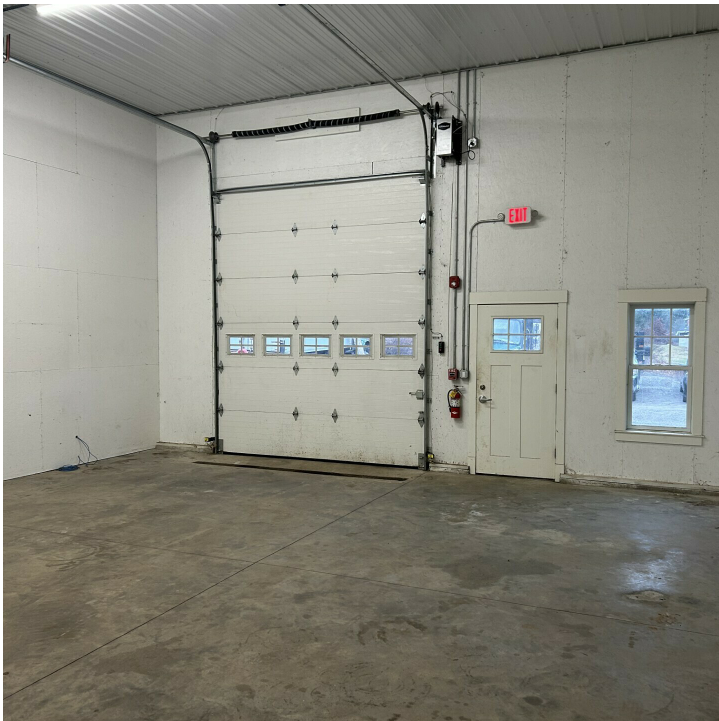
Lease Rate:	\$1,600.00 per month (Full Service)
Available SF:	1,013 SF
Lot Size:	301,653 SF
Building Size:	7,400 SF

DEMOGRAPHICS

	0.3 MILES	0.5 MILES	1 MILE
Total Households	70	178	433
Total Population	183	474	1,201
Average HH Income	\$115,600	\$115,743	\$115,188

ADDITIONAL PHOTOS

20 GATE ST



KERRICK PIERCE

781.919.0800 x710
kperce@ellisrealtyadvisors.com

DAVE ELLIS, SIOR

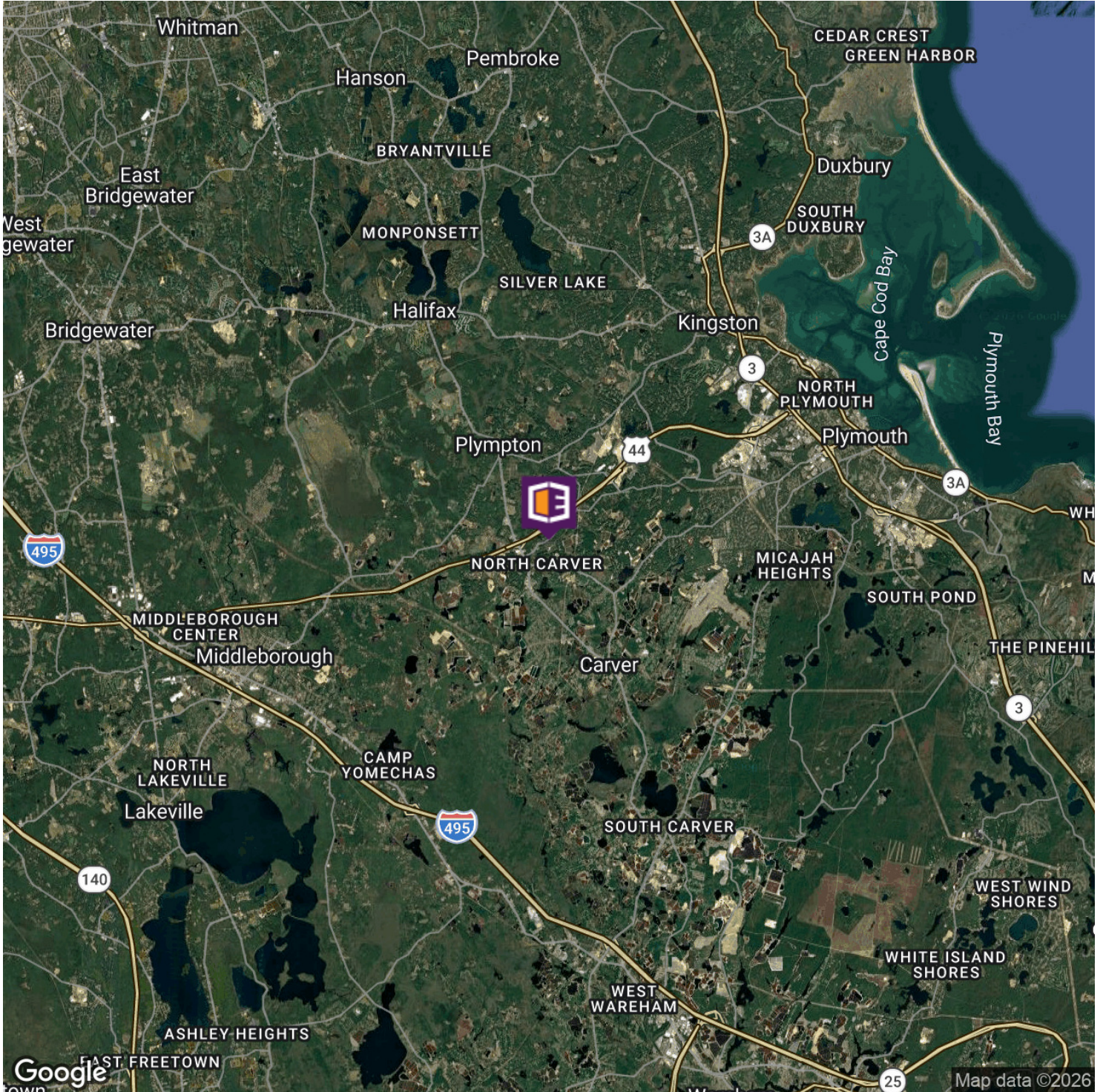
781.919.0800 x701
dave@ellisrealtyadvisors.com

20 GATE ST



Addendum C

20 GATE ST



KERRICK PIERCE
781.919.0800 x710
kpierce@ellisrealtyadvisors.com

DAVE ELLIS, SIOR
781.919.0800 x701
dave@ellisrealtyadvisors.com