

0.92 ACRES OF INDUSTRIAL LAND AVAILABLE FOR SALE



3550 NW 16th Street

Lauderhill, FL 33311

Dalton Easton
(305) 878-7329
deaston@theeastongroup.com

Michael Foxwell Jr.
(443) 328-5165
mfoxwell@theeastongroup.com



Easton & Associates

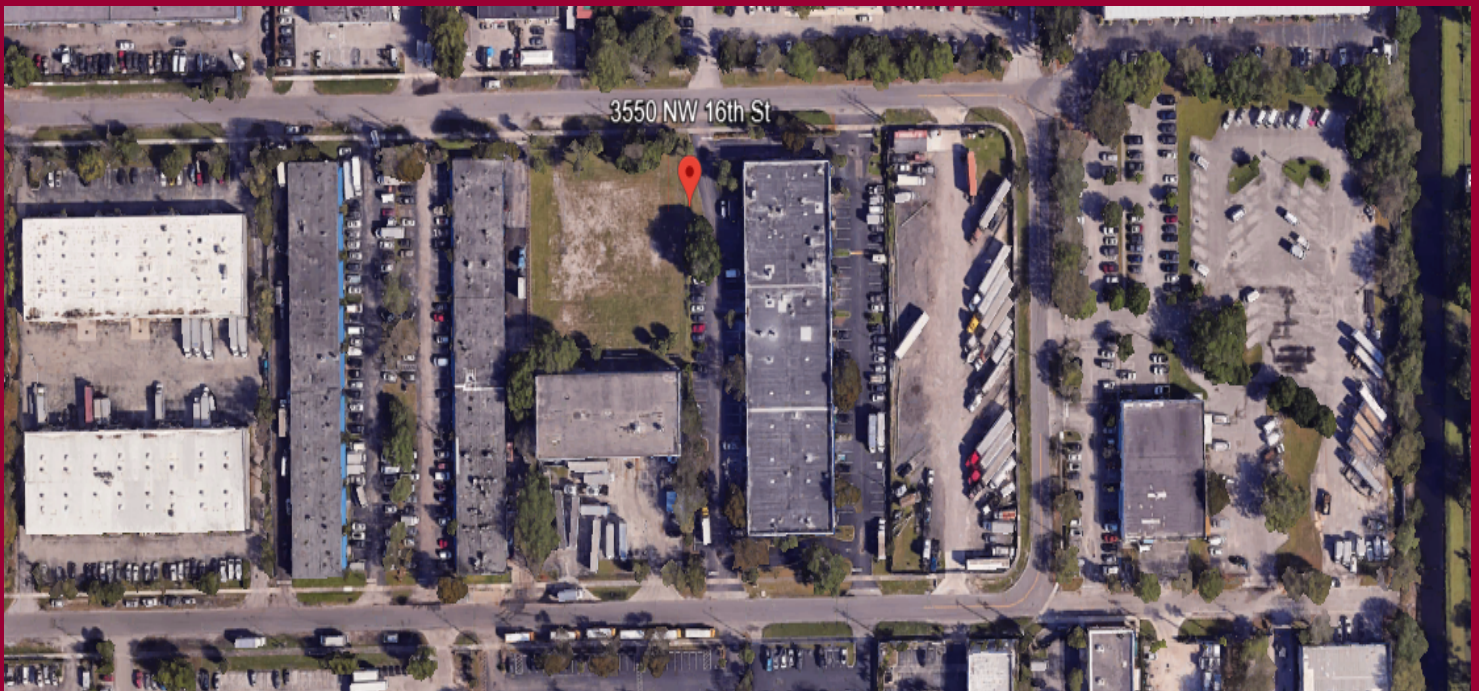
10165 NW 19 Street, Doral, FL 33172
(305) 593-2222
www.theeastongroup.com

3550 NW 16th Street

Property Highlights

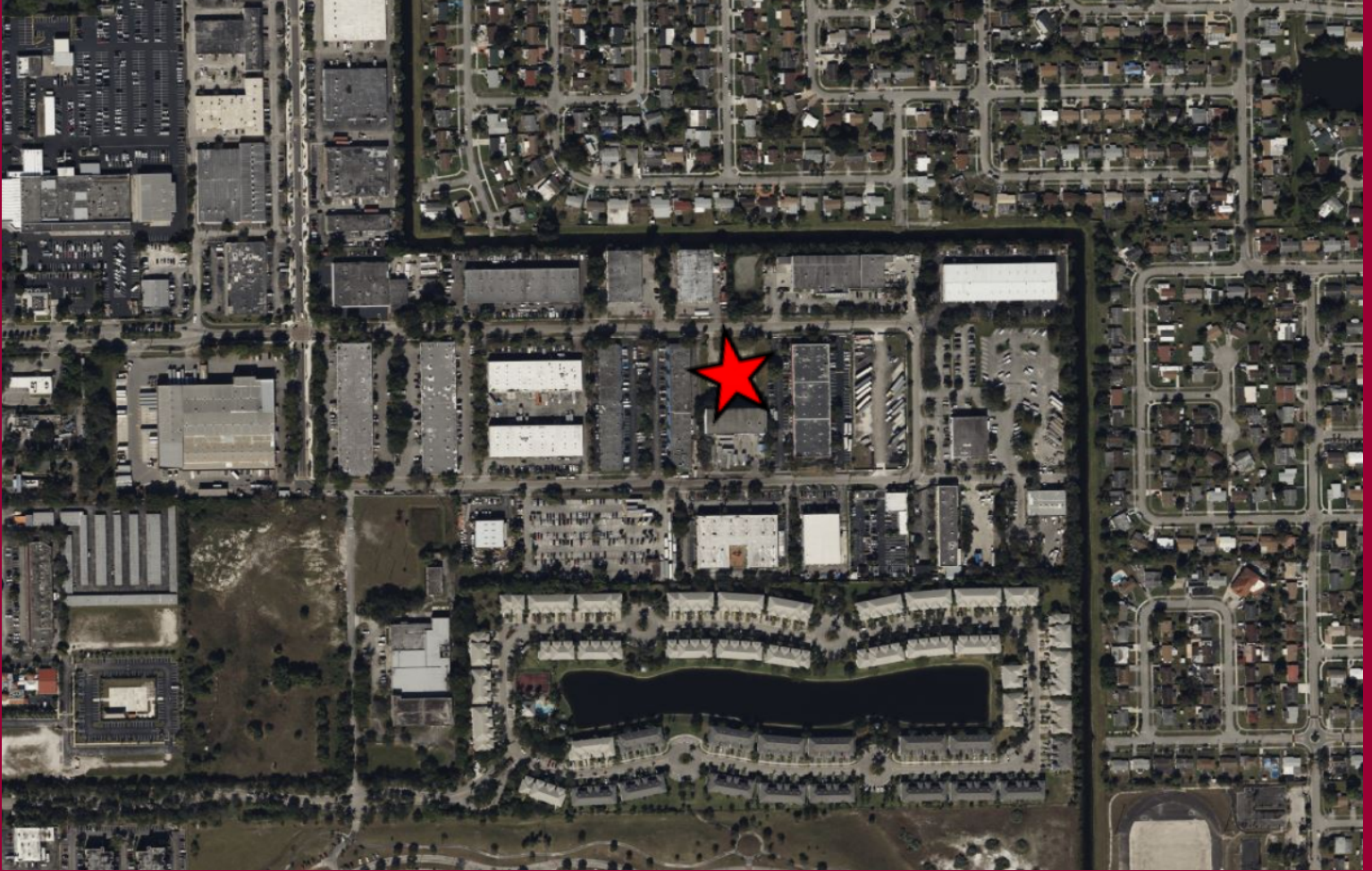
3550 NW 16th Street is situated in the Fort Lauderdale Sub-market with close proximity to Fort Lauderdale International Airport, Port Everglades, and major highways. Comprised of 0.92 Acres of industrial land.

- Total Size: 0.92 Acres (39,846 SF)
- Parcel ID: 494231240042
- Zoned: Zoned Light Industrial (IL)
- Asking Price: \$1,900,000.00



3550 NW 16th Street

Area Map



Distance To:

- FL Turnpike.....5.6 Miles
- I-95.....7.9 Miles
- I-595.....6.2 Miles
- Ft. Lauderdale Int. Airport.....10.0 Miles
- Port Everglades.....9.8 Miles