

FOR LEASE

20,000 SF CLASS A OFFICE/WAREHOUSE



130 Stafford Court
Williamsburg, Virginia 23185

Rare Freestanding Industrial Building



CUSHMAN &
WAKEFIELD

THALHIMER

130 STAFFORD COURT

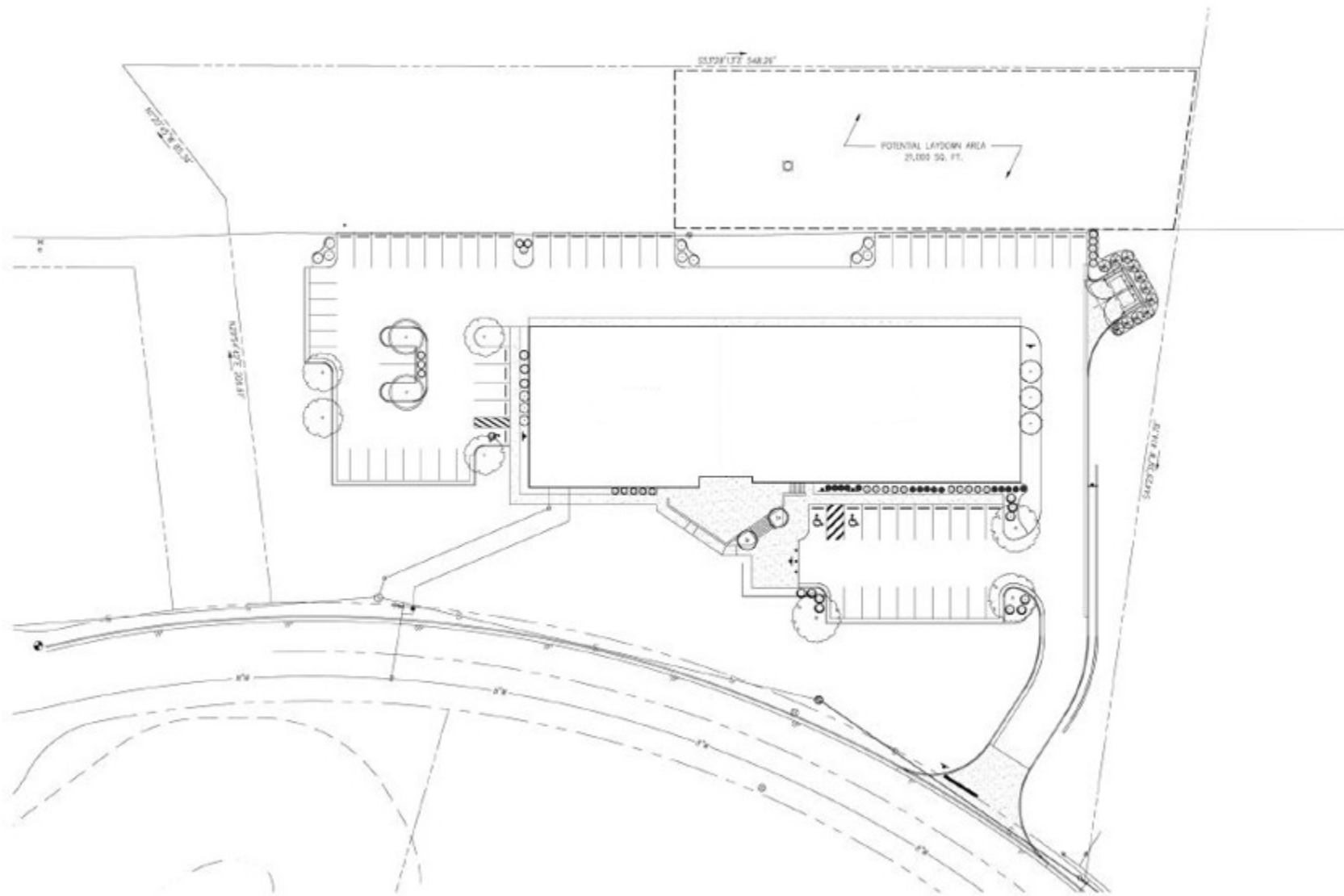
PROPERTY HIGHLIGHTS

Total Building Size:	±20,000 SF (will subdivide)
Lease Rate:	\$12.00/SF NNN
Year Built:	2024
Overhead Doors:	(4) 12' x 14'
Loading Doors:	(4) On-grade level
Ceiling Height:	Approximately 19' front - 17' rear
Parking:	71 spaces (approximately 3.5 per 1,000 SF)
Electrical:	480/277 voltage (3 phase available)
Zoning:	I-1, economic opportunity
Water & Sewer:	Yes
Gas:	Yes
Outside Storage:	Approximately 20,000 SF outside storage or laydown yard
Additional Information:	<ul style="list-style-type: none">• Ideal for industrial manufacturing, warehouse, assembling and fulfillment use• Located within master planned 104-acre Busch Industrial Park• Other park occupants include Eaton, Kerner Group, Liberty Warehousing and Staib Instruments

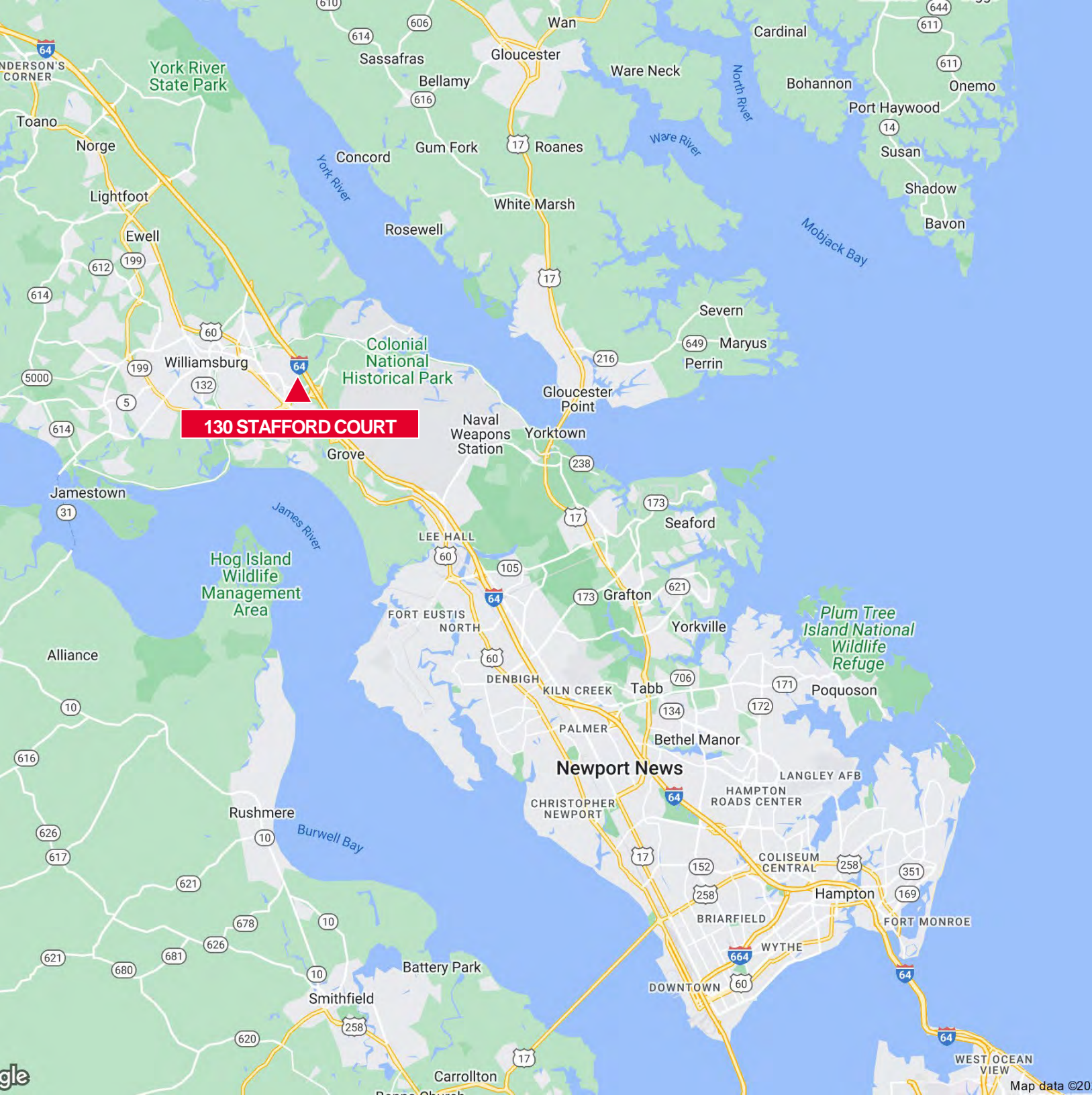




AERIAL PHOTO
20,000 SF



SITE PLAN
20,000 SF



130 STAFFORD COURT

1 MILE
TO INTERSTATE 64

4 MILES
TO COLONIAL
WILLIAMSBURG

18 MILES
TO NEWPORT NEWS

41 MILES
TO NORFOLK AIRPORT

48 MILES
TO RICHMOND
AIRPORT

50 MILES
TO RICHMOND

A DRIVING WORKFORCE

3,364
POPULATION
1 MILE

\$86,507
MEDIAN HHI
1 MILE

19,130
POPULATION
3 MILE

\$119,201
MEDIAN HHI
3 MILE

40,841
POPULATION
5 MILE

\$102,970
MEDIAN HHI
5 MILE



CONTACT INFORMATION

DAWN F. GRIGGS, SIOR

First Vice President
757 873 1210
dawn.griggs@thalhimer.com

ANDY DALLAS, CCIM, SIOR

Senior Vice President
757 873 3661
andy.dallas@thalhimer.com



**CUSHMAN &
WAKEFIELD**

THALHIMER

One BayPort Way
Suite 100
Newport News, VA 23606
thalhimer.com

Independently Owned and Operated / A Member of the Cushman & Wakefield Alliance

Cushman & Wakefield | Thalhimer © 2025. No warranty or representation, express or implied, is made to the accuracy or completeness of the information contained herein, and same is submitted subject to errors, omissions, change of price, rental or other conditions, withdrawal without notice, and to any special listing conditions imposed by the property owner(s). As applicable, we make no representation as to the condition of the property (or properties) in question.