

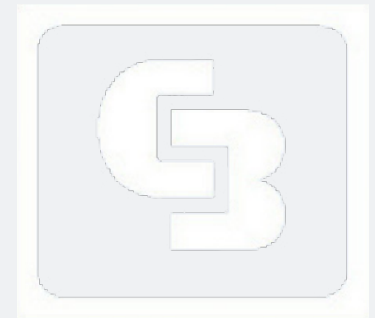


2200 E Matthews, Jonesboro, AR



Kodi Griffin
AKGRIFFIN97@GMAIL.COM
870.275.0749

Carroll Caldwell
CARROLLCALDWELL1@GMAIL.COM
870.931.8233



Available For Sale and Lease

Sale Price: \$1,025,000

Rent: \$8.00/SF | NNN

This office space is
sized at 8,486 SF

1.20 +/- Acres

73 Parking Spaces



2200 E Matthews Avenue

Coldwell Banker Commercial is proud to present this large stand alone office building in Jonesboro, AR 2200 E Matthews. Formally occupied by Arkansas Early Learning, the property boasts over 8,000 SF of space, located near the towns high traffic business district. This space is a great choice for any business and is move in ready. Showings are appointment only and can be scheduled by contacting the listing agent.

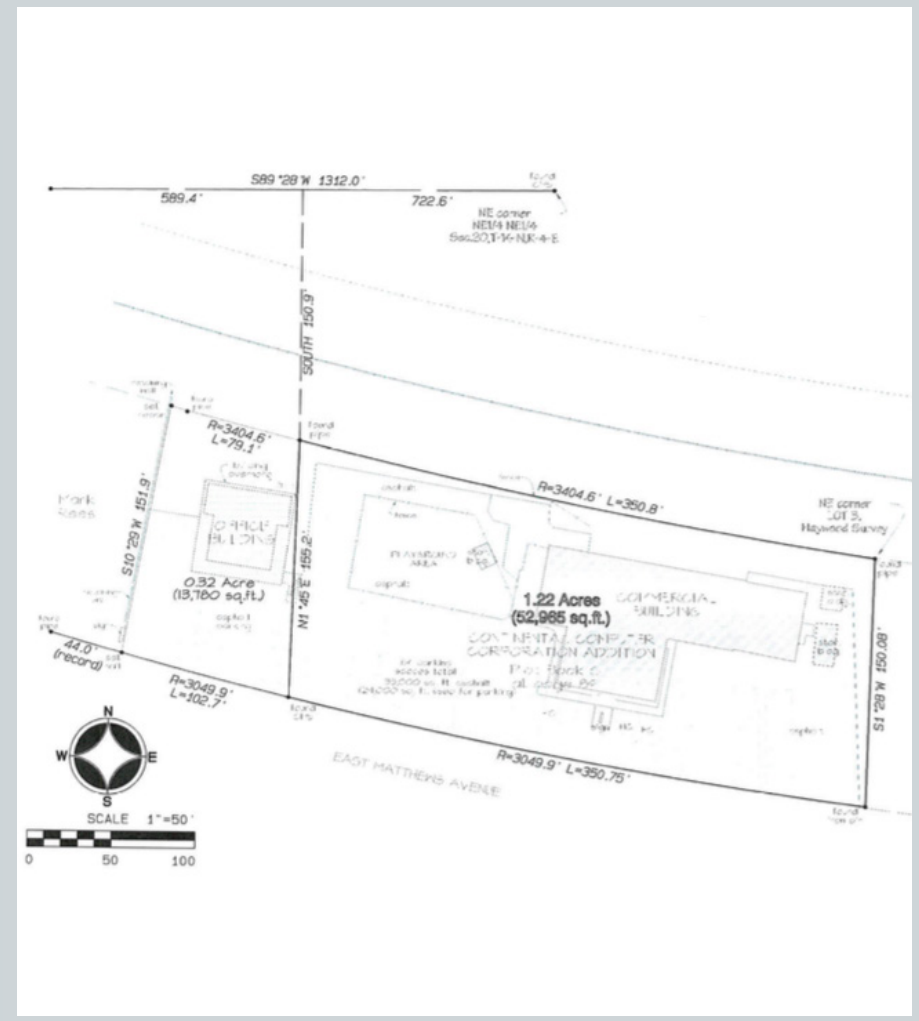
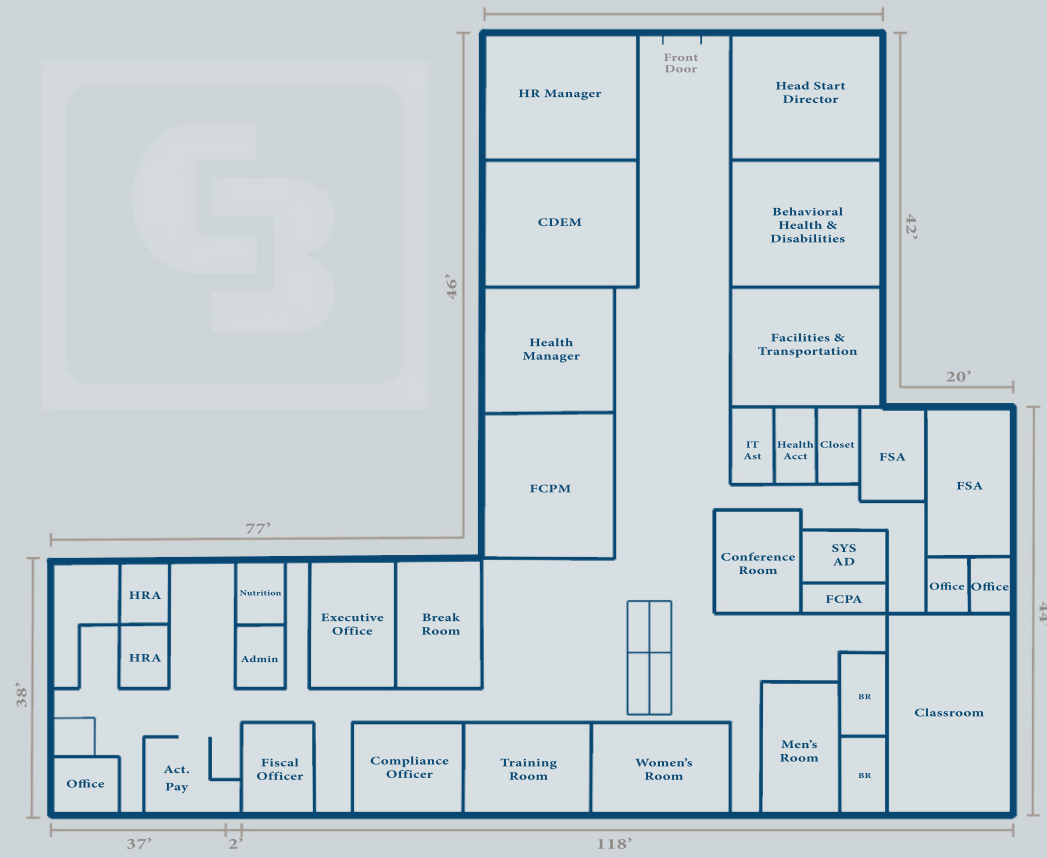


Matthews Ave
18,350 CPD

Caraway Rd
18,000 CPD

Nettleton Ave
19,000 CPD

2200 E Matthews Site Plan & Survey



Population	1 Mile	3 Mile	5 Mile
2000 Population	4,875	35,079	54,668
2010 Population	5,149	40,426	64,837
2018 Population	5,353	45,771	73,706
2023 Population	5,484	48,910	78,941
2018 Median Age	31.2	31.0	33.0

Income	1 Mile	3 Mile	5 Mile
2018 Median Household Income	\$29,308	\$36,117	\$43,508
2023 Median Household Income	\$32,722	\$40,659	\$49,955
2018 Average Household Income	\$42,138	\$52,056	\$64,006
2023 Average Household Income	\$47,607	\$59,147	\$72,305

Households	1 Mile	3 Mile	5 Mile
2000 Households	2,210	14,447	21,798
2010 Households	2,115	16,301	25,226
2018 Households	2,178	18,500	28,711
2023 Households	2,232	19,857	30,843
2018 Average Size	2.40	2.31	2.45



Kodi Griffin

AKGRIFFIN97@GMAIL.COM

870.275.0749

Carroll Caldwell

CARROLLCALDWELL1@GMAIL.COM

870.931.8233

2704 S Culberhouse Rd | Jonesboro, AR 72401

All information furnished regarding property for sale or lease is from sources deemed reliable, but no warranty or representation is made as to the accuracy thereof and the same is subject to errors, omissions, changes of prices, rental or other conditions, prior sale or lease or withdrawal without notice.