

Commercial Office Building Available For Lease

323 East Willetta Street, Phoenix, AZ 85004



- Two-story Freestanding Office Building for Lease
- Beautifully Remodeled and Move-In Ready
- Includes Main Building and Modular Building on .31 Acres
- Approximately 3,996 SF Total
- Available for Lease: \$19.50 PSF NNN
- Zoned DTC
- APN 111-37-030
- Located in Midtown Phoenix Area
- Close to Downtown Phoenix Amenities like Phoenix Art Museum, Children Museum of Phoenix, Chase Field, and Phoenix Sky Harbor Airport
- Easy Access to I-17

www.menlocre.com/property

Grafton Milne, SIOR, CCIM

Designated Broker

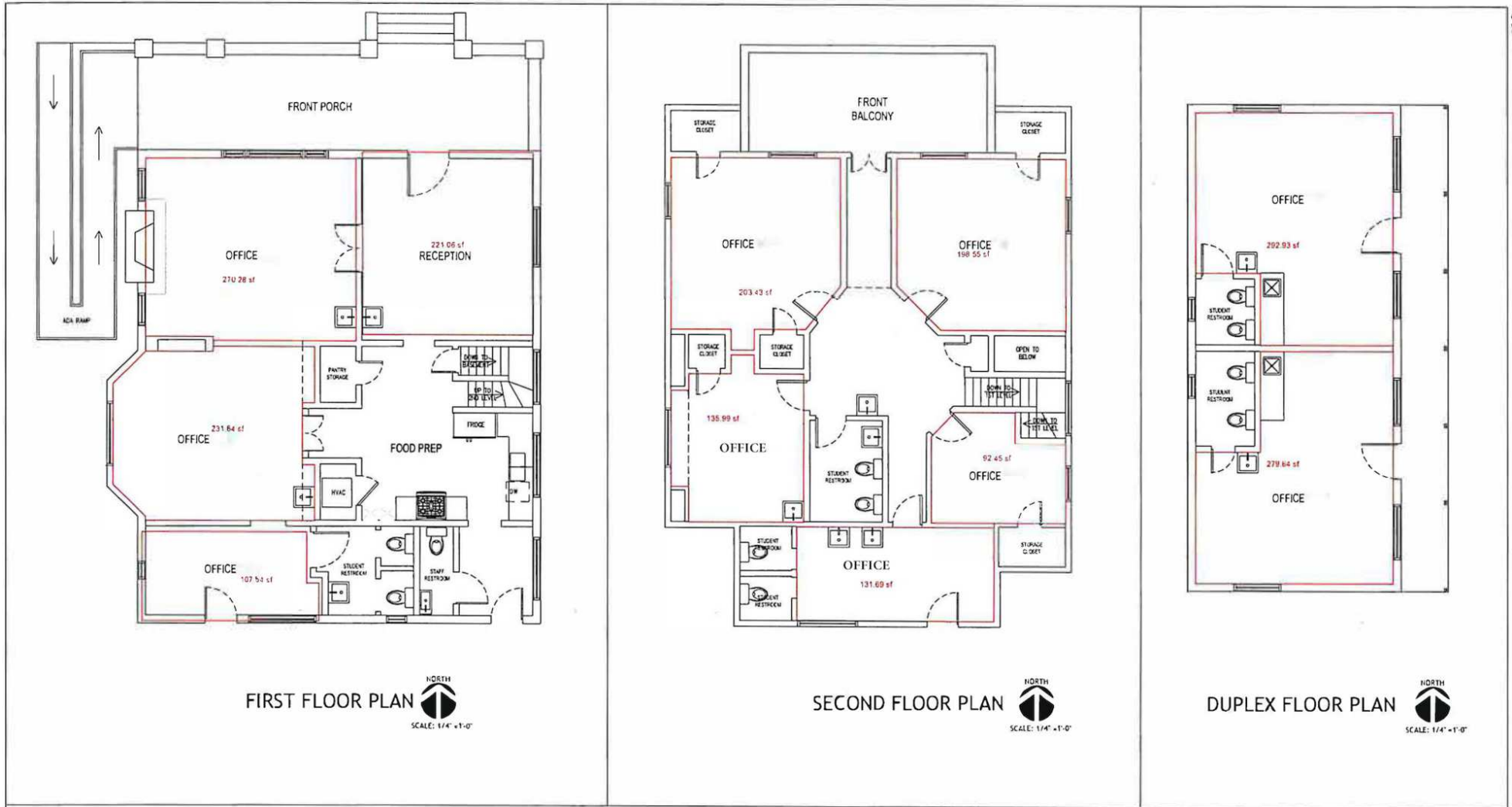
grafton@menlocre.com

P: 480.659.1777 • F: 480.535.5854
www.menlocre.com

Commercial Office Building Available For Lease

323 East Willetta Street, Phoenix, AZ 85004

Floor Plan

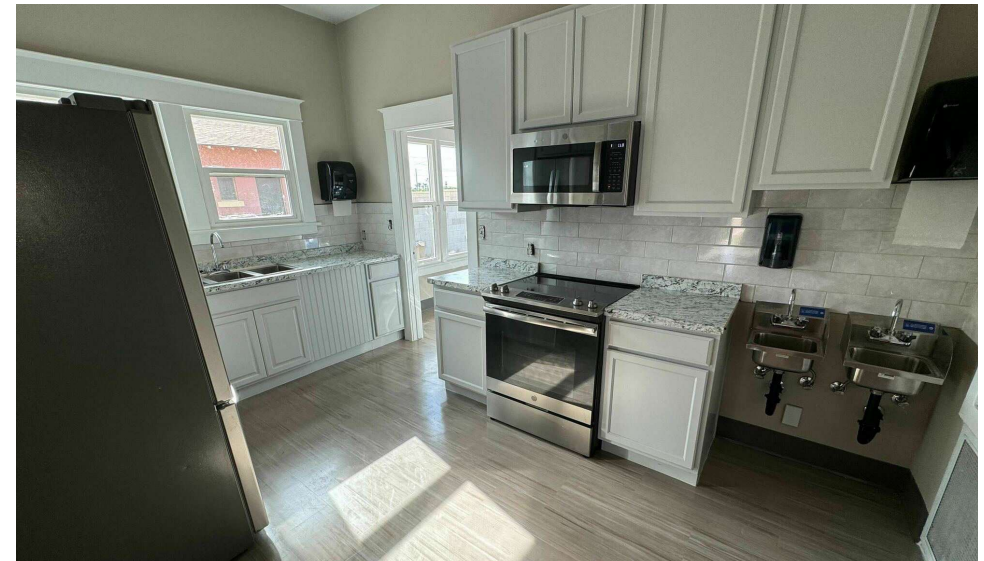


Commercial Office Building Available For Lease

323 East Willetta Street, Phoenix, AZ 85004

Additional Photos

Page 3



Commercial Office Building Available For Lease

323 East Willetta Street, Phoenix, AZ 85004

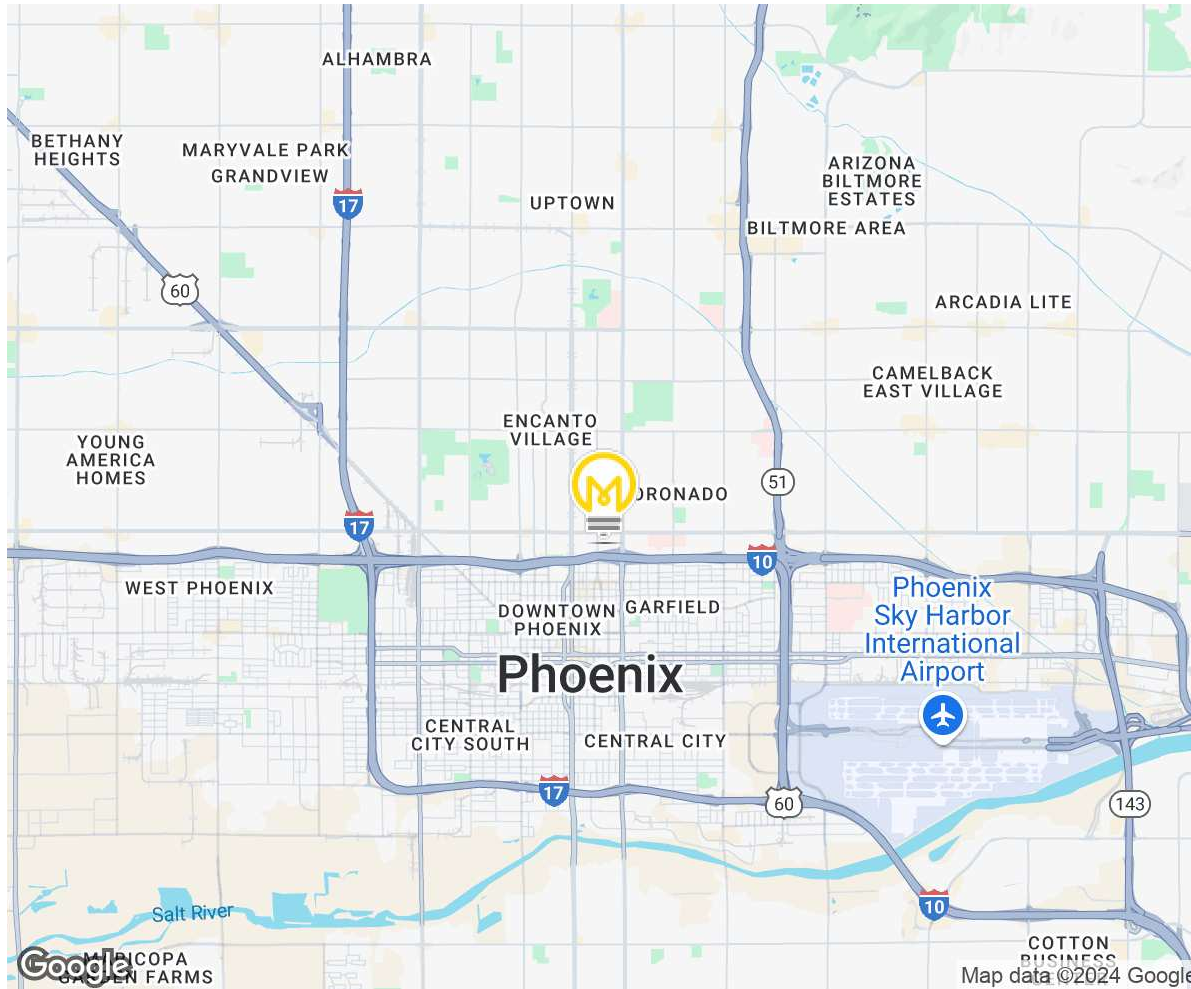
Additional Photos



Commercial Office Building Available For Lease

323 East Willetta Street, Phoenix, AZ 85004

Site Details



| DEMOGRAPHICS | 0.3 Miles | 0.5 Miles | 1 Mile |
|--------------------|-----------|-----------|----------|
| Total Households: | 734 | 3,983 | 11,204 |
| Total Population: | 1,203 | 6,723 | 20,571 |
| Average HH Income: | \$100,273 | \$102,324 | \$94,088 |