

# FOR LEASE

**HUNTINGTON PLAZA**  
222 East Huntington Drive, Monrovia, CA 91016



**Coldwell Banker Commercial George Realty**  
1611 South Garfield Avenue  
Alhambra, CA 91801  
License 01121690  
[www.cbcworldwide.com](http://www.cbcworldwide.com)

**Exclusive Leasing Broker:**

**Aldon Lai**  
Vice President  
626.552.1028  
[aldonlaicw@gmail.com](mailto:aldonlaicw@gmail.com)  
License 01855739



# FOR LEASE

HUNTINGTON PLAZA | 222 East Huntington Drive, Monrovia, CA 91016

## Welcome to the Huntington Plaza!

*COLDWELL BANKER COMMERCIAL GEORGE REALTY* has retained the exclusive right to lease the Huntington Plaza at 222 East Huntington Drive in the “All-America” City of Monrovia. Our Class B professional building is situated in the San Gabriel Valley, just east of Downtown Los Angeles.

**MODERN AMENITIES** The Huntington Plaza boasts a 2-level glass building comprised of the east wing and the west wing with a modern atrium in the center. The building was constructed at the end of the Southern California’s construction boom in 1988 and has many modern amenities. It is located on a huge lot of 5.7 acres with an abundance of parking. The Huntington Plaza has a beautiful and lush landscape for tenants and its staff to admire and appreciate. The property also offers impressive bay depths and ceiling heights that allow for any combination of open areas, private offices, showrooms, engineering, and assembly storage areas.

**LOCATION, LOCATION, LOCATION!** Within a few blocks, you will immediately have access to the 210 freeway and less than a mile to the Metro Gold Line. You will find we’re minutes away from Pasadena and Los Angeles and within close proximity to numerous hotels and retail establishments, along with Old Town Monrovia just off of Myrtle Avenue to the north.

**SCHEDULE A VISIT!** You will find we have everything you need for your next headquarter, regional office, district office, laboratory, and light warehousing. We have a wide range of sizes for you from 2,552 SF to 4,970 SF. We may have future opportunities so please don’t hesitate to ask.

### DISCLOSURE

*Coldwell Banker Commercial and the Coldwell Banker Commercial Logo are registered service marks licensed to Coldwell Banker Real Estate LLC. Each Office is Independently Owned and Operated. The information contained herein was obtained from third parties, and has not been independently verified by the real estate brokers. Tenants should have the experts of their choice inspect the property with all its systems, square footage, and verify all information and bears all risk for any inaccuracies. Real estate brokers are not qualified to act as or select experts with respect to legal, tax, environmental, building construction, or other such matters. May, 2025*



**Coldwell Banker Commercial George Realty**  
1611 South Garfield Avenue  
Alhambra, CA 91801  
License 01121690  
[www.cbcworldwide.com](http://www.cbcworldwide.com)

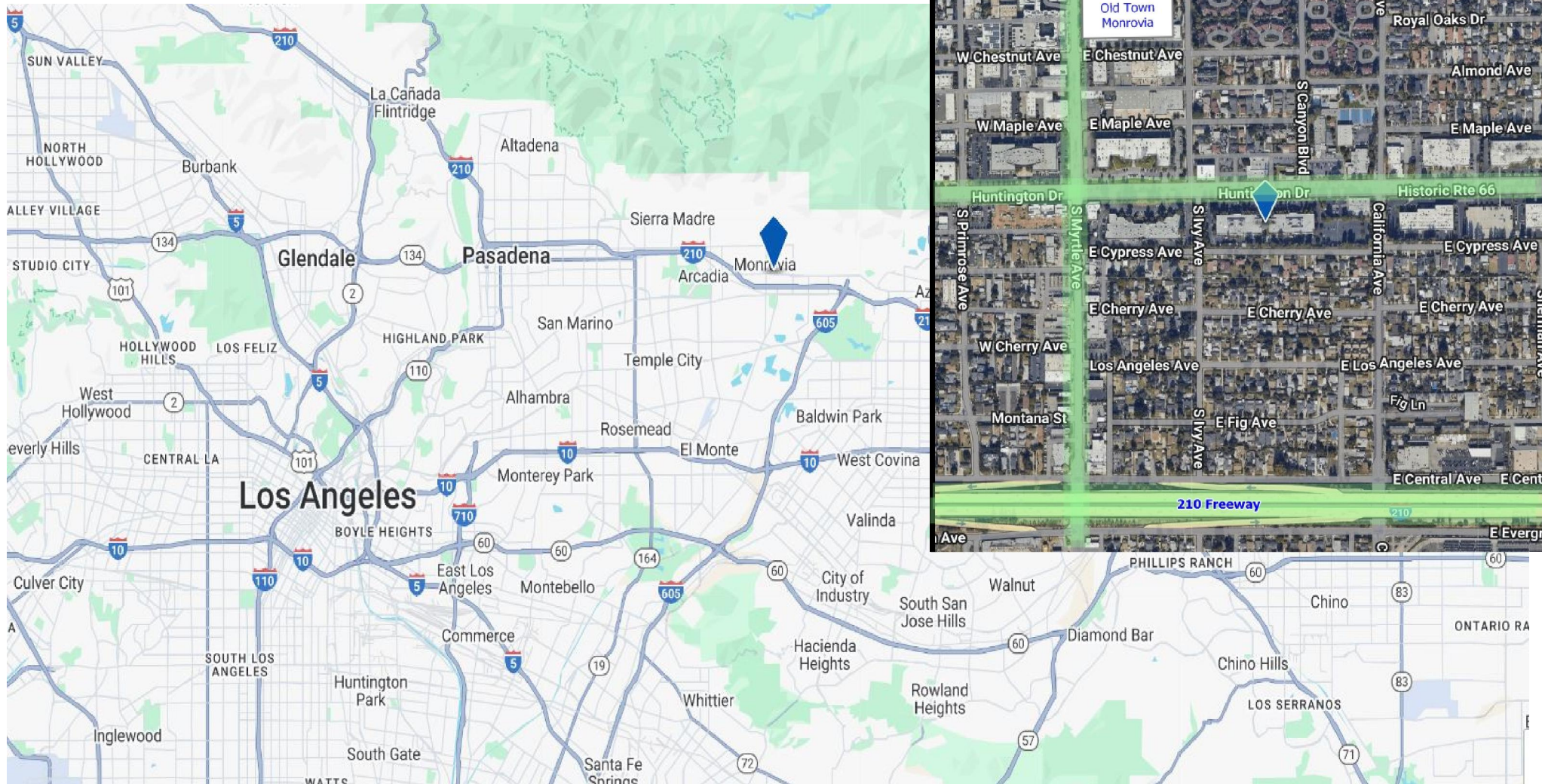
**For more information,  
Please contact:**

**Aldon Lai**  
Vice President  
626.552.1028  
[aldonlai@gmail.com](mailto:aldonlai@gmail.com)  
License 01855739



# FOR LEASE

HUNTINGTON PLAZA | 222 East Huntington Drive, Monrovia, CA 91016



**Coldwell Banker Commercial George Realty**  
1611 South Garfield Avenue  
Alhambra, CA 91801  
License 01121690  
[www.cbcworldwide.com](http://www.cbcworldwide.com)

**For more information,  
Please contact:**

**Aldon Lai**  
Vice President  
626.552.1028  
[aldonlai@gmail.com](mailto:aldonlai@gmail.com)  
License 01855739



# FOR LEASE

HUNTINGTON PLAZA | 222 East Huntington Drive, Monrovia, CA 91016



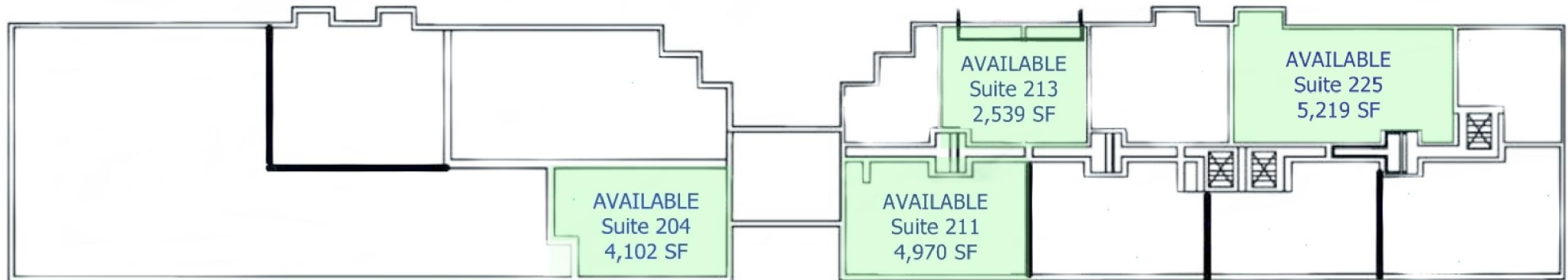
Coldwell Banker Commercial George Realty  
1611 South Garfield Avenue  
Alhambra, CA 91801  
License 01121690  
[www.cbcworldwide.com](http://www.cbcworldwide.com)

For more information,  
Please contact:

Aldon Lai  
Vice President  
626.552.1028  
[aldonlai@gmail.com](mailto:aldonlai@gmail.com)  
License 01855739



### SECOND FLOOR



AVAILABLE SPACES	SIZE (RSF)	Term	Rate (SF/Mo)	Space Use	Type	Condition	Available
2nd Floor, Suite 204	4,102	3-5 Years	\$2.50	Office	Full-Service	Full Build Out	NOW
2nd Floor, Suite 211	4,970	3-5 Years	\$2.50	Office	Full-Service	Full Build Out	NOW
2nd Floor, Suite 213	2,539	3-5 Years	\$2.50	Office	Full-Service	Full Build Out	NOW
2nd Floor, Suite 225	5,219	3-5 Years	\$2.50	Office	Full-Service	Full Build Out	NOW



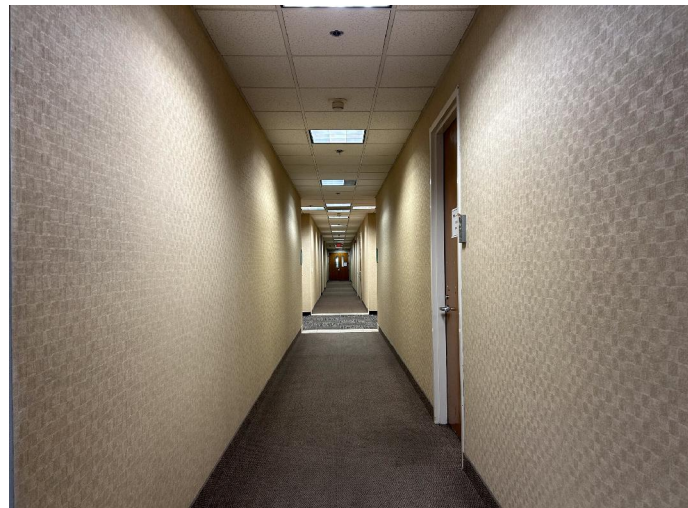
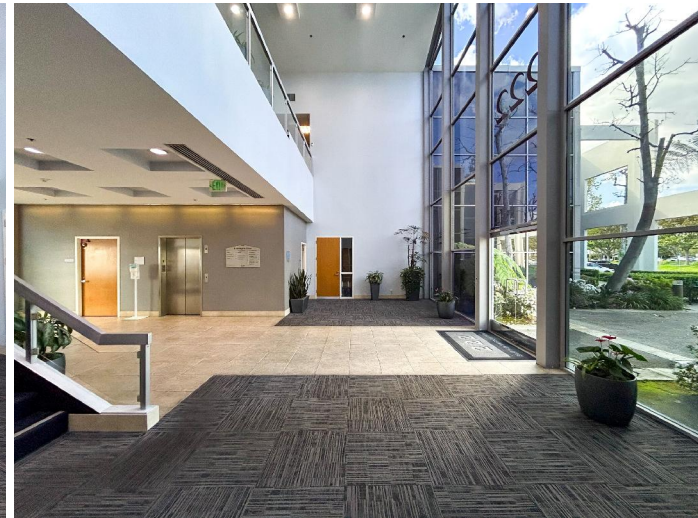
**Coldwell Banker Commercial George Realty**  
1611 South Garfield Avenue  
Alhambra, CA 91801  
License 01121690  
[www.cbcworldwide.com](http://www.cbcworldwide.com)

**For more information,  
Please contact:**

**Aldon Lai**  
Vice President  
626.552.1028  
[aldonlaicw@gmail.com](mailto:aldonlaicw@gmail.com)  
License 01855739

# FOR LEASE

HUNTINGTON PLAZA | 222 East Huntington Drive, Monrovia, CA 91016



Coldwell Banker Commercial George Realty  
1611 South Garfield Avenue  
Alhambra, CA 91801  
License 01121690  
[www.cbcworldwide.com](http://www.cbcworldwide.com)

For more information,  
Please contact:

Aldon Lai  
Vice President  
626.552.1028  
[aldonlaicw@gmail.com](mailto:aldonlaicw@gmail.com)  
License 01855739